

Data Path : Z:\pestpcbsrv\HPCHEM1\FID_C\Data\FC032421AL\
 Data File : FC052694.D
 Signal(s) : FID1A.CH
 Acq On : 24 Mar 2021 21:59
 Operator : DD\AJ
 Sample : M1671-03
 Misc :
 ALS Vial : 10 Sample Multiplier: 1

Instrument :
 FID_C
 ClientSampleId :
 1

Integration File: autoint1.e
 Quant Time: Mar 25 01:25:35 2021
 Quant Method : Z:\pestpcbsrv\HPCHEM1\FID_C\Method\Alaphatic EPH 031721.M
 Quant Title : GC Extractables
 QLast Update : Wed Mar 17 03:47:28 2021
 Response via : Initial Calibration
 Integrator: ChemStation 6890 Scale Mode: Large solvent peaks clipped

Volume Inj. : 1 ul
 Signal Phase : Rxi-1ms
 Signal Info : 20M x 0.18mm x 0.18um

Compound	R.T.	Response	Conc Units

System Monitoring Compounds			
9) S ortho-Terphenyl (SURR)	11.570	4956239	36.975 ug/ml
Spiked Amount	50.000	Recovery	= 73.95%
12) S 1-chlorooctadecane (S...	13.007	3696986	34.276 ug/ml
Spiked Amount	50.000	Recovery	= 68.55%

Target Compounds

(f)=RT Delta > 1/2 Window

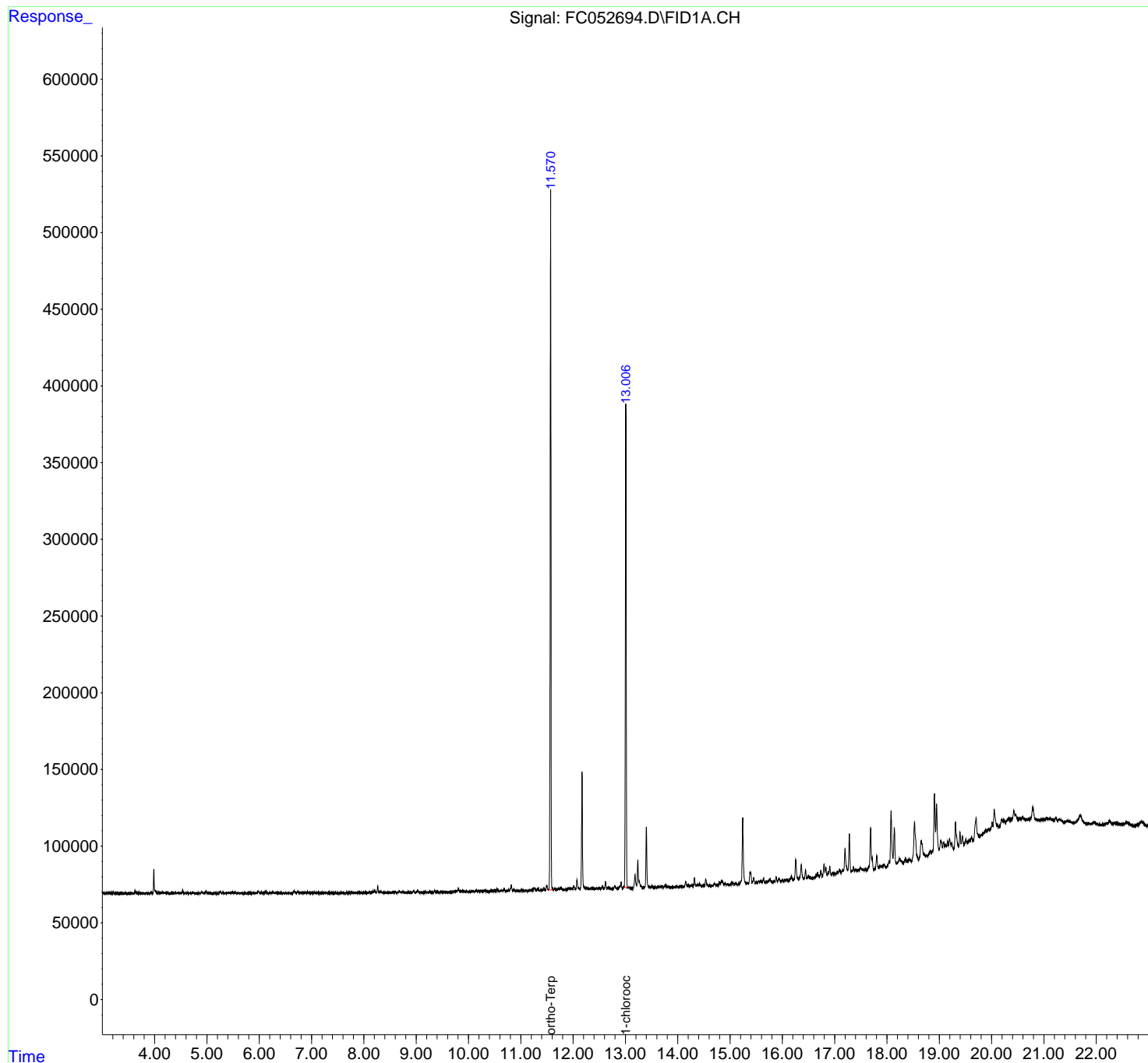
(m)=manual int.

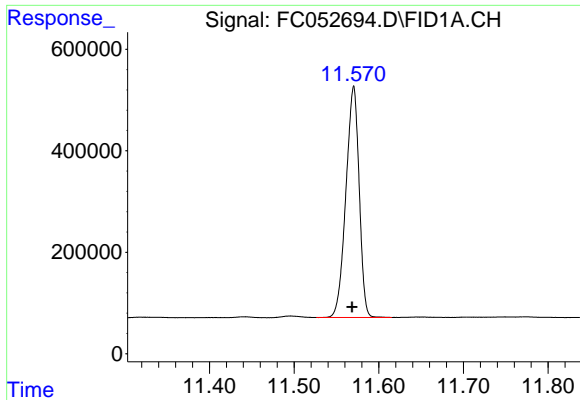
Data Path : Z:\pestpcbsrv\HPCHEM1\FID_C\Data\FC032421AL\
Data File : FC052694.D
Signal(s) : FID1A.CH
Acq On : 24 Mar 2021 21:59
Operator : DD\AJ
Sample : M1671-03
Misc :
ALS Vial : 10 Sample Multiplier: 1

Instrument :
FID_C
ClientSampled :
1

Integration File: autoint1.e
Quant Time: Mar 25 01:25:35 2021
Quant Method : Z:\pestpcbsrv\HPCHEM1\FID_C\Method\Alaphatic EPH 031721.M
Quant Title : GC Extractables
QLast Update : Wed Mar 17 03:47:28 2021
Response via : Initial Calibration
Integrator: ChemStation 6890 Scale Mode: Large solvent peaks clipped

Volume Inj. : 1 ul
Signal Phase : Rxi-1ms
Signal Info : 20M x 0.18mm x 0.18um

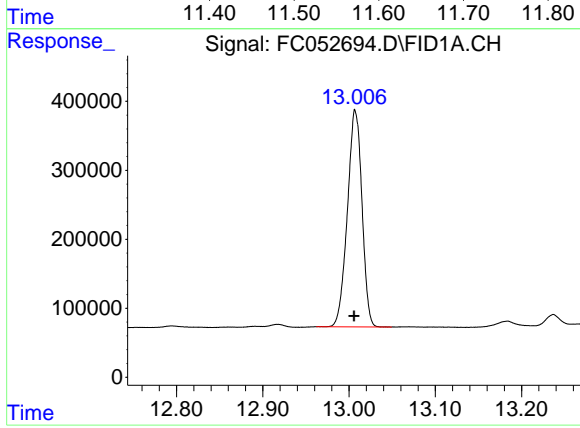




#9 ortho-Terphenyl (SURR)

R.T.: 11.570 min
Delta R.T.: 0.002 min
Response: 4956239
Conc: 36.98 ug/ml

Instrument :
FID_C
ClientSampled :
1



#12 1-chlorooctadecane (SURR)

R.T.: 13.007 min
Delta R.T.: 0.001 min
Response: 3696986
Conc: 34.28 ug/ml