

Data Path : Z:\pestpcbsrv\HPCHEM1\FID_C\Data\FC032423AL\
 Data File : FC063241.D
 Signal(s) : FID1A.ch
 Acq On : 25 Mar 2023 00:11
 Operator : YP/AJ
 Sample : 02023-05
 Misc :
 ALS Vial : 16 Sample Multiplier: 1

Instrument :
 FID_C
ClientSampleId :
 TP-13-TEST-PIT-ON-GRAVELLY

Integration File: autoint1.e
 Quant Time: Mar 25 02:16:49 2023
 Quant Method : Z:\pestpcbsrv\HPCHEM1\FID_C\Method\Aliphatic EPH 031523.M
 Quant Title : GC Extractables
 QLast Update : Thu Mar 16 01:30:46 2023
 Response via : Initial Calibration
 Integrator: ChemStation

Volume Inj. : 1 ul
 Signal Phase : Rxi-1ms
 Signal Info : 20M x 0.18mm x 0.18um

Compound	R.T.	Response	Conc Units

System Monitoring Compounds			
12) S 1-chlorooctadecane (S...	12.972	5486958	56.866 ug/ml
Spiked Amount	50.000	Recovery	= 113.73%

Target Compounds

(f)=RT Delta > 1/2 Window

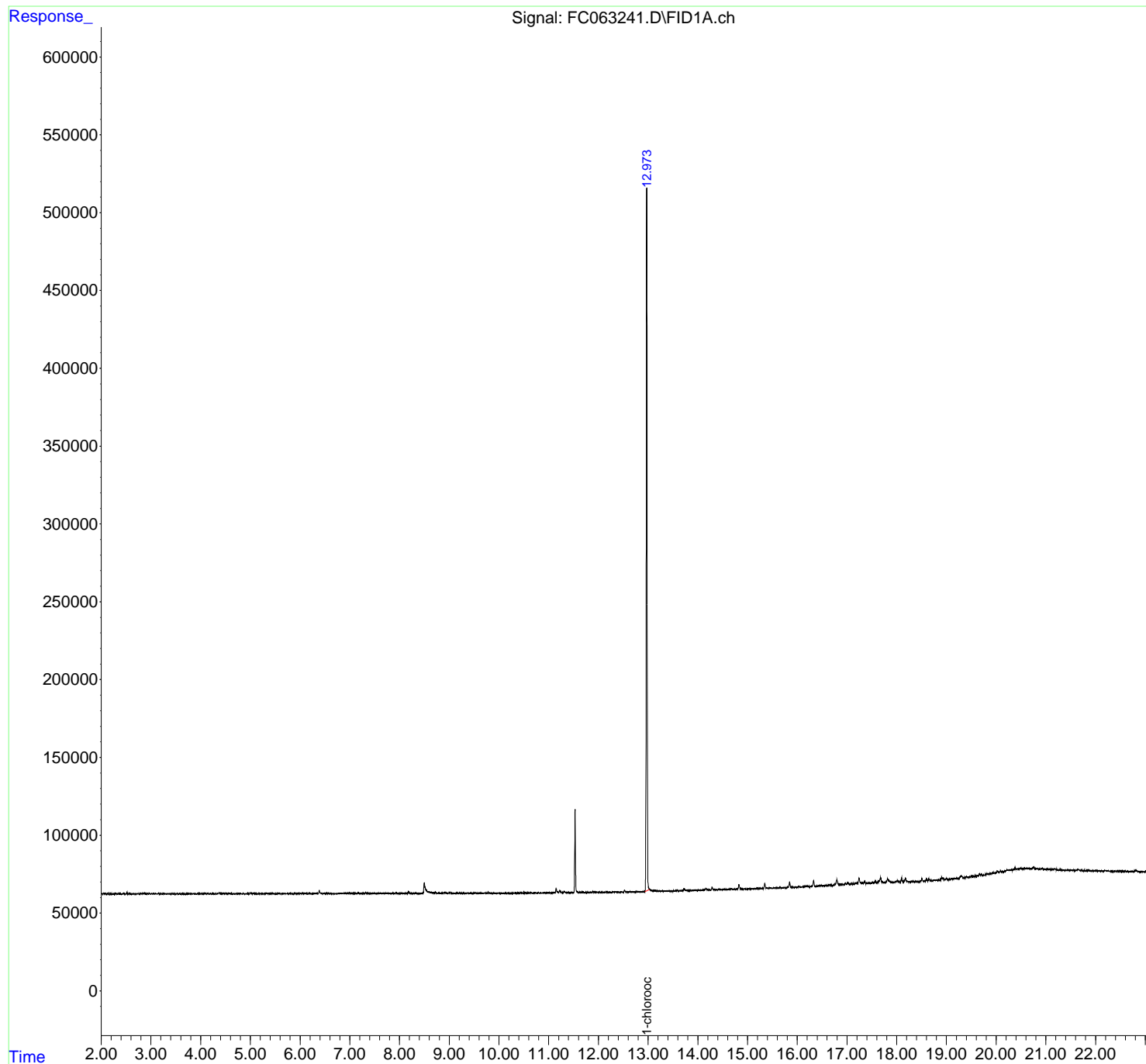
(m)=manual int.

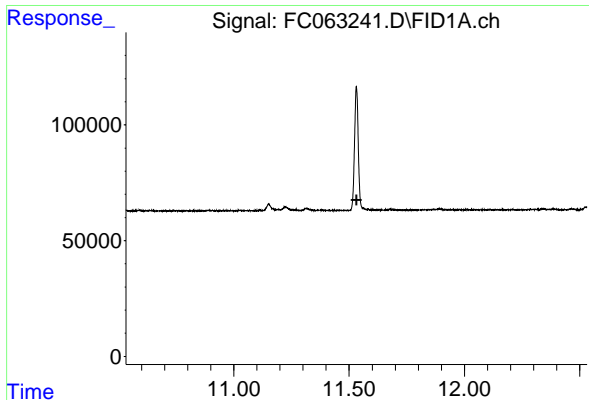
Data Path : Z:\pestpcbsrv\HPCHEM1\FID_C\Data\FC032423AL\
Data File : FC063241.D
Signal(s) : FID1A.ch
Acq On : 25 Mar 2023 00:11
Operator : YP/AJ
Sample : 02023-05
Misc :
ALS Vial : 16 Sample Multiplier: 1

Instrument :
FID_C
ClientSampleId :
TP-13-TEST-PIT-ON-GRAVELLY

Integration File: autoint1.e
Quant Time: Mar 25 02:16:49 2023
Quant Method : Z:\pestpcbsrv\HPCHEM1\FID_C\Method\Aliphatic EPH 031523.M
Quant Title : GC Extractables
QLast Update : Thu Mar 16 01:30:46 2023
Response via : Initial Calibration
Integrator: ChemStation

Volume Inj. : 1 ul
Signal Phase : Rxi-1ms
Signal Info : 20M x 0.18mm x 0.18um

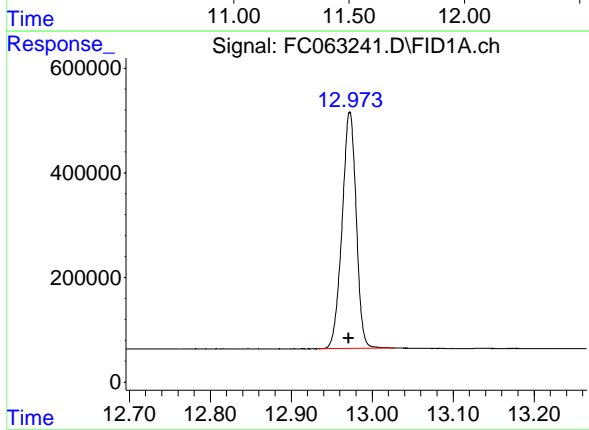




#9 ortho-Terphenyl (SURR)

R.T.: 0.000 min
 Exp R.T.: 11.532 min
 Response: 0
 Conc: N.D.

Instrument : FID_C
 ClientSampleId : TP-13-TEST-PIT-ON-GRAVELLY



#12 1-chlorooctadecane (SURR)

R.T.: 12.972 min
 Delta R.T.: 0.001 min
 Response: 5486958
 Conc: 56.87 ug/ml