

Data Path : Z:\pestpcbsrv\HPCHEM1\FID\_C\Data\FC032521AL\  
 Data File : FC052722.D  
 Signal(s) : FID1A.CH  
 Acq On : 25 Mar 2021 18:21  
 Operator : DD\AJ  
 Sample : M1789-04  
 Misc :  
 ALS Vial : 14 Sample Multiplier: 1

Instrument :  
 FID\_C  
 ClientSampleId :  
 PIPE-01

Integration File: autoint1.e  
 Quant Time: Mar 26 01:06:14 2021  
 Quant Method : Z:\pestpcbsrv\HPCHEM1\FID\_C\Method\Alaphatic EPH 031721.M  
 Quant Title : GC Extractables  
 QLast Update : Wed Mar 17 03:47:28 2021  
 Response via : Initial Calibration  
 Integrator: ChemStation 6890 Scale Mode: Large solvent peaks clipped

Volume Inj. : 1 ul  
 Signal Phase : Rxi-1ms  
 Signal Info : 20M x 0.18mm x 0.18um

Compound	R.T.	Response	Conc Units
-----			
System Monitoring Compounds			
12) S 1-chlorooctadecane (S...	13.004	3028968	28.083 ug/ml
Spiked Amount	50.000	Recovery	= 56.17%

Target Compounds

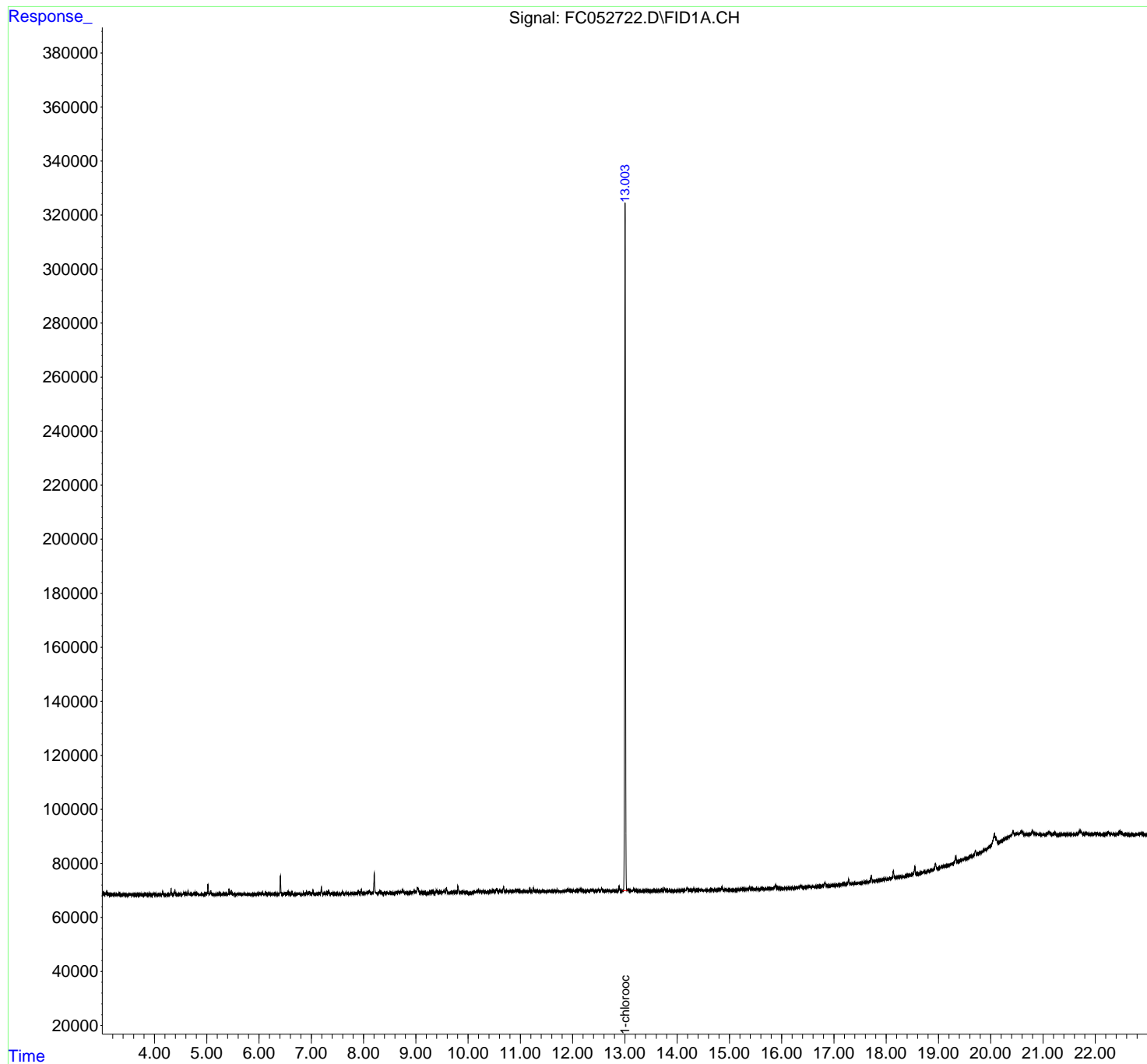
(f)=RT Delta > 1/2 Window (m)=manual int.

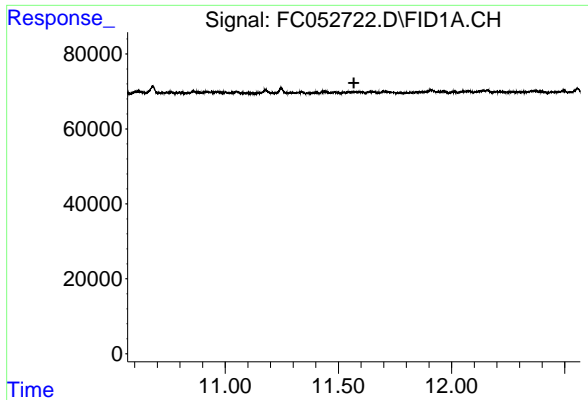
Data Path : Z:\pestpcbsrv\HPCHEM1\FID\_C\Data\FC032521AL\  
Data File : FC052722.D  
Signal(s) : FID1A.CH  
Acq On : 25 Mar 2021 18:21  
Operator : DD\AJ  
Sample : M1789-04  
Misc :  
ALS Vial : 14 Sample Multiplier: 1

Instrument :  
FID\_C  
ClientSampled :  
PIPE-01

Integration File: autoint1.e  
Quant Time: Mar 26 01:06:14 2021  
Quant Method : Z:\pestpcbsrv\HPCHEM1\FID\_C\Method\Alaphatic EPH 031721.M  
Quant Title : GC Extractables  
QLast Update : Wed Mar 17 03:47:28 2021  
Response via : Initial Calibration  
Integrator: ChemStation 6890 Scale Mode: Large solvent peaks clipped

Volume Inj. : 1 ul  
Signal Phase : Rxi-1ms  
Signal Info : 20M x 0.18mm x 0.18um

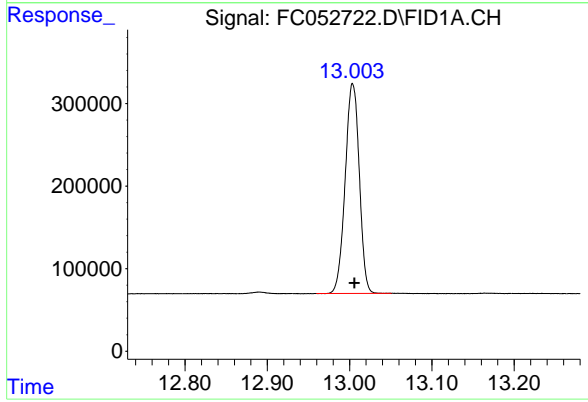




#9 ortho-Terphenyl (SURR)

R.T.: 0.000 min  
Exp R.T.: 11.568 min  
Response: 0  
Conc: N.D.

Instrument :  
FID\_C  
ClientSampled :  
PIPE-01



#12 1-chlorooctadecane (SURR)

R.T.: 13.004 min  
Delta R.T.: -0.002 min  
Response: 3028968  
Conc: 28.08 ug/ml