

Data Path : Z:\pestpcbsrv\HPCHEM1\FID_C\Data\FC032522AL\
 Data File : FC058908.D
 Signal(s) : FID1A.CH
 Acq On : 26 Mar 2022 22:31
 Operator : UA/NP
 Sample : N2077-07DL 10X
 Misc :
 ALS Vial : 13 Sample Multiplier: 1

Instrument :

FID_C

ClientSampleId :

WC-14A-3-1DL

Manual Integrations

APPROVED

Reviewed By :Yogesh Patel 03/28/2022

Supervised By :mohammad ahmed 03/30/2022

Integration File: autoint1.e
 Quant Time: Mar 26 23:45:17 2022
 Quant Method : Z:\pestpcbsrv\HPCHEM1\FID_C\Method\Aliphatic EPH 032522.M
 Quant Title : GC Extractables
 QLast Update : Fri Mar 25 23:18:46 2022
 Response via : Initial Calibration
 Integrator: ChemStation 6890 Scale Mode: Large solvent peaks clipped

Volume Inj. : 1 ul
 Signal Phase : Rxi-1ms
 Signal Info : 20M x 0.18mm x 0.18um

Compound	R.T.	Response	Conc Units

System Monitoring Compounds			
12) S 1-chlorooctadecane (S...	12.552	595743	5.315 ug/mlm
Spiked Amount	50.000	Recovery =	10.63%

Target Compounds

(f)=RT Delta > 1/2 Window

(m)=manual int.

Data Path : Z:\pestpcbsrv\HPCHEM1\FID_C\Data\FC032522AL\
 Data File : FC058908.D
 Signal(s) : FID1A.CH
 Acq On : 26 Mar 2022 22:31
 Operator : UA/NP
 Sample : N2077-07DL 10X
 Misc :
 ALS Vial : 13 Sample Multiplier: 1

Instrument :

FID_C

ClientSampleId :

WC-14A-3-1DL

Manual Integrations

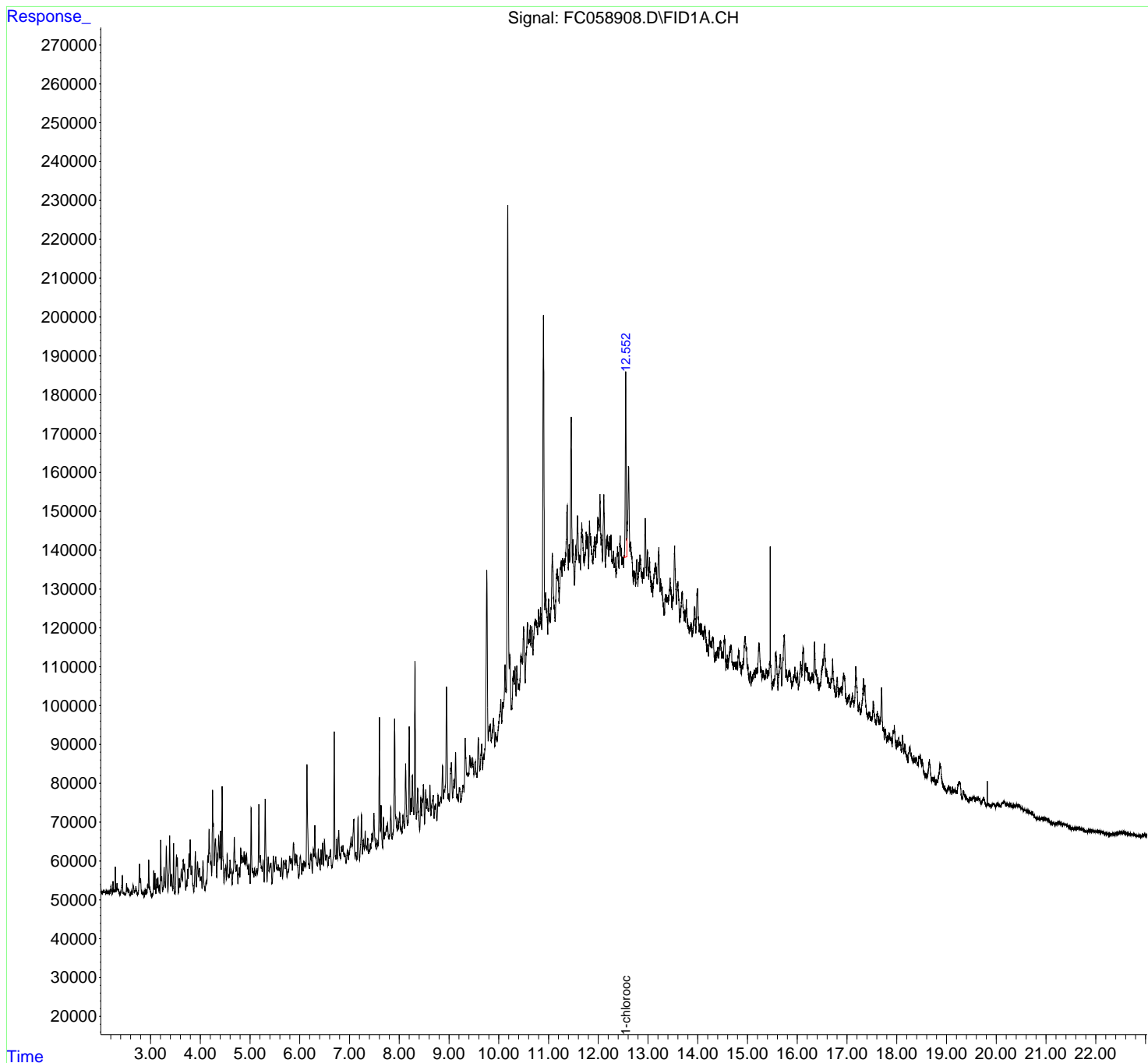
APPROVED

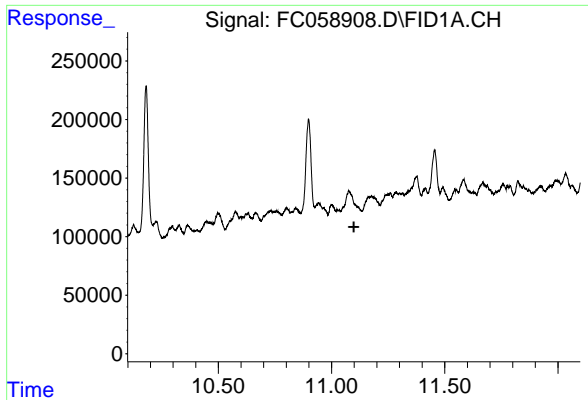
Reviewed By :Yogesh Patel 03/28/2022

Supervised By :mohammad ahmed 03/30/2022

Integration File: autoint1.e
 Quant Time: Mar 26 23:45:17 2022
 Quant Method : Z:\pestpcbsrv\HPCHEM1\FID_C\Method\Aliphatic EPH 032522.M
 Quant Title : GC Extractables
 QLast Update : Fri Mar 25 23:18:46 2022
 Response via : Initial Calibration
 Integrator: ChemStation 6890 Scale Mode: Large solvent peaks clipped

Volume Inj. : 1 ul
 Signal Phase : Rxi-1ms
 Signal Info : 20M x 0.18mm x 0.18um





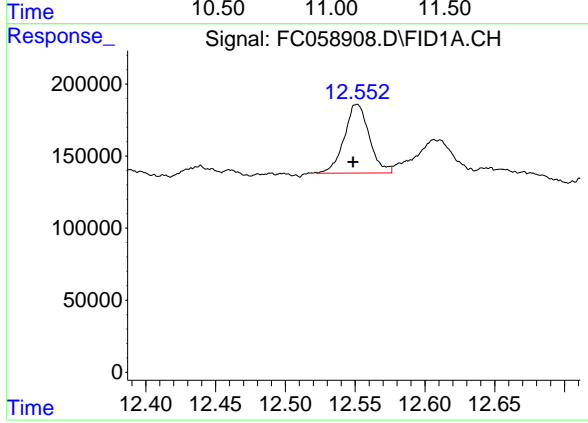
#9 ortho-Terphenyl (SURR)

R.T.: 0.000 min
 Exp R.T.: 11.099 min
 Response: 0
 Conc: N.D.

Instrument :
 FID_C
 ClientSampleId :
 WC-14A-3-1DL

Manual Integrations
 APPROVED

Reviewed By :Yogesh Patel 03/28/2022
 Supervised By :mohammad ahmed 03/30/2022



#12 1-chlorooctadecane (SURR)

R.T.: 12.552 min
 Delta R.T.: 0.003 min
 Response: 595743
 Conc: 5.31 ug/ml m