

Data Path : Z:\pestpcbsrv\HPCHEM1\FID_C\Data\FC032619AL\
 Data File : FC040136.D
 Signal(s) : FID1A.CH
 Acq On : 26 Mar 2019 20:02
 Operator : AJ\SJ
 Sample : K1693-13
 Misc :
 ALS Vial : 13 Sample Multiplier: 1

Integration File: autoint1.e
 Quant Time: Mar 27 01:31:03 2019
 Quant Method : Z:\pestpcbsrv\HPCHEM1\FID_C\Method\Alaphatic EPH 032319.M
 Quant Title : GC Extractables
 QLast Update : Sat Mar 23 13:38:33 2019
 Response via : Initial Calibration
 Integrator: ChemStation 6890 Scale Mode: Large solvent peaks clipped

Volume Inj. : 1 ul
 Signal Phase : Rxi-1ms
 Signal Info : 20M x 0.18mm x 0.18um

Compound	R.T.	Response	Conc Units

System Monitoring Compounds			
9) S ortho-Terphenyl (SURR)	11.016	2517556	19.550 ug/ml
Spiked Amount	50.000	Recovery	= 39.10%
12) S 1-chlorooctadecane (S...	12.443	4935214	49.962 ug/ml
Spiked Amount	50.000	Recovery	= 99.92%
Target Compounds			
5) T A~2-methylnaphthalene...	6.494	35044	0.353 ug/ml
6) T n-Tetradecane (C14)	7.717f	34604	0.380 ug/ml
7) T n-Hexadecane (C16)	9.255	80904	0.842 ug/ml
8) T n-Octadecane (C18)	10.692	80706	0.805 ug/ml
10) T n-Eicosane (C20)	11.999	102835	1.010 ug/ml
11) T n-Heneicosane (C21)	12.618	90625	0.899 ug/ml
13) T n-Docosane (C22)	13.196	62942	0.626 ug/ml
14) T n-Tetracosane (C24)	14.273	369916	3.715 ug/ml
15) T n-Hexacosane (C26)	15.315	108302	1.106 ug/ml
16) T n-Octacosane (C28)	16.264	429000	4.373 ug/ml
17) T n-Tricontane (C30)	17.149	866038	8.851 ug/ml
18) T n-Dotriacontane (C32)	17.980	930105	9.611 ug/ml
19) T n-Tetratriacontane (C34)	18.796	565739	6.749 ug/ml
20) T n-Hexatriacontane (C36)	19.816	93388	1.268 ug/ml

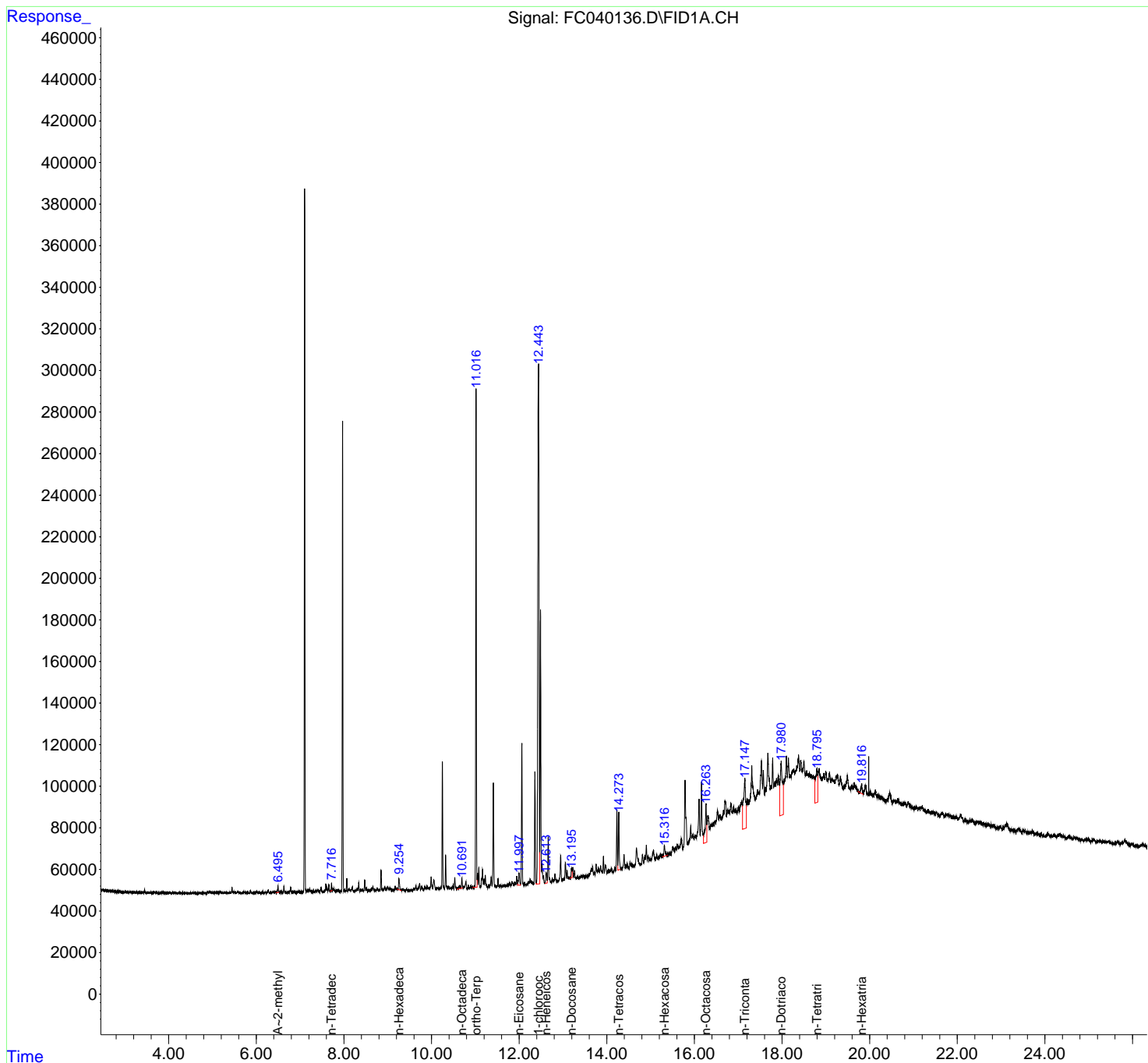
(f)=RT Delta > 1/2 Window

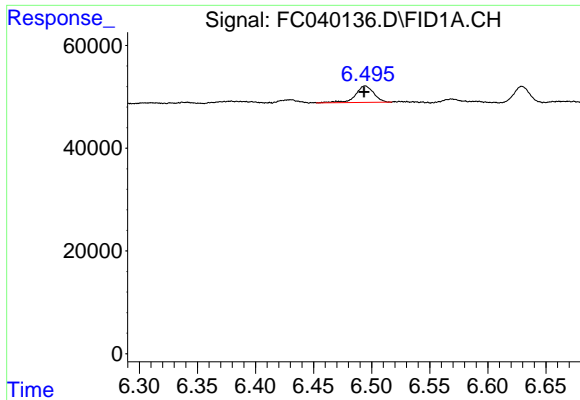
(m)=manual int.

Data Path : Z:\pestpcbsrv\HPCHEM1\FID_C\Data\FC032619AL\
 Data File : FC040136.D
 Signal(s) : FID1A.CH
 Acq On : 26 Mar 2019 20:02
 Operator : AJ\SJ
 Sample : K1693-13
 Misc :
 ALS Vial : 13 Sample Multiplier: 1

Integration File: autoint1.e
 Quant Time: Mar 27 01:31:03 2019
 Quant Method : Z:\pestpcbsrv\HPCHEM1\FID_C\Method\Aliphatic EPH 032319.M
 Quant Title : GC Extractables
 QLast Update : Sat Mar 23 13:38:33 2019
 Response via : Initial Calibration
 Integrator: ChemStation 6890 Scale Mode: Large solvent peaks clipped

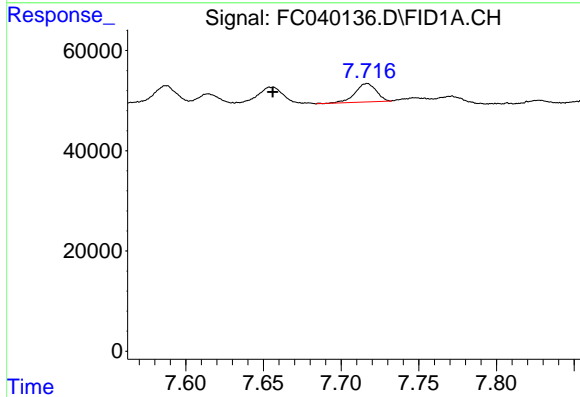
Volume Inj. : 1 ul
 Signal Phase : Rxi-1ms
 Signal Info : 20M x 0.18mm x 0.18um





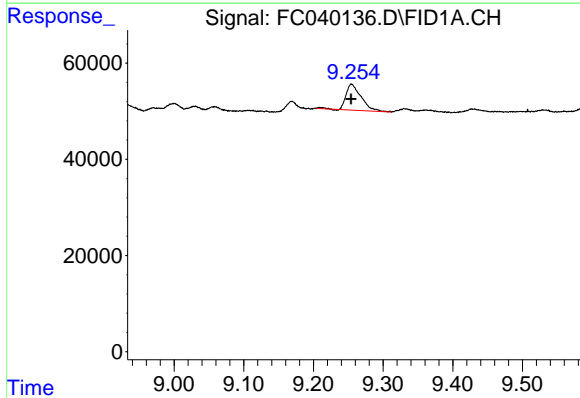
#5 A~2-methylnaphthalene (C12.89)

R.T.: 6.494 min
Delta R.T.: 0.001 min
Response: 35044
Conc: 0.35 ug/ml



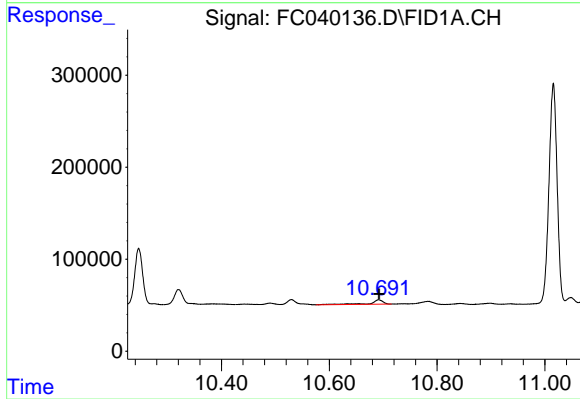
#6 n-Tetradecane (C14)

R.T.: 7.717 min
Delta R.T.: 0.061 min
Response: 34604
Conc: 0.38 ug/ml



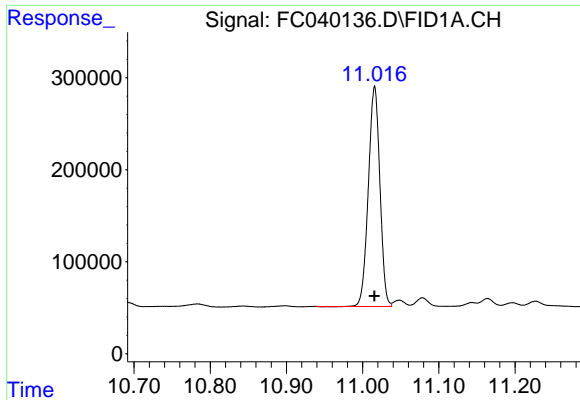
#7 n-Hexadecane (C16)

R.T.: 9.255 min
Delta R.T.: 0.000 min
Response: 80904
Conc: 0.84 ug/ml



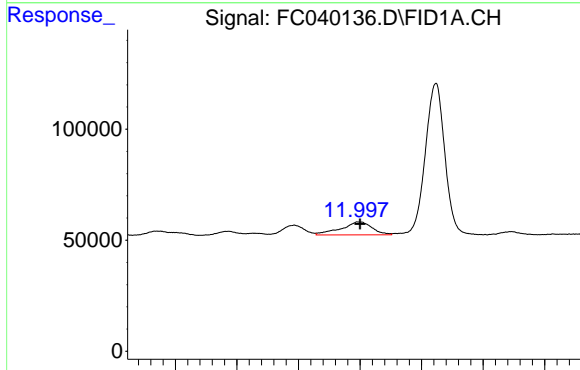
#8 n-Octadecane (C18)

R.T.: 10.692 min
Delta R.T.: 0.000 min
Response: 80706
Conc: 0.80 ug/ml



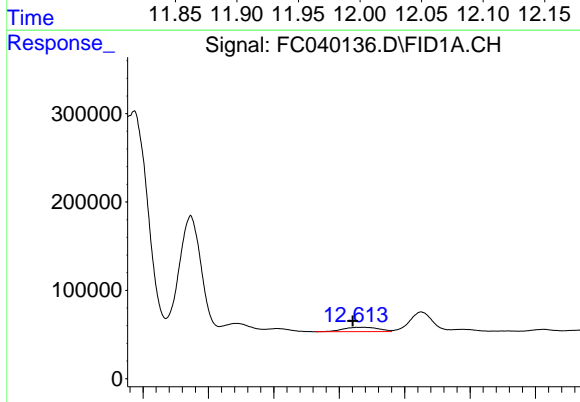
#9 ortho-Terphenyl (SURR)

R.T.: 11.016 min
Delta R.T.: 0.000 min
Response: 2517556
Conc: 19.55 ug/ml



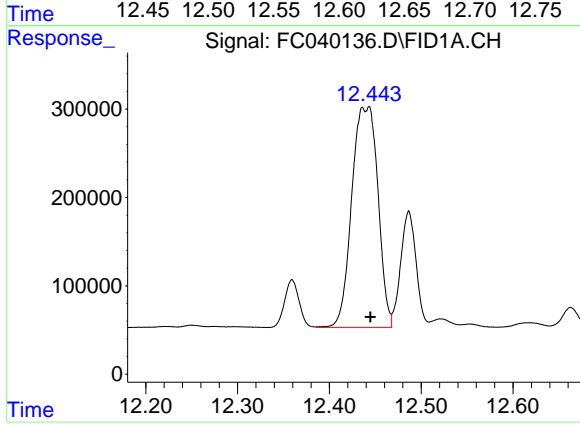
#10 n-Eicosane (C20)

R.T.: 11.999 min
Delta R.T.: 0.000 min
Response: 102835
Conc: 1.01 ug/ml



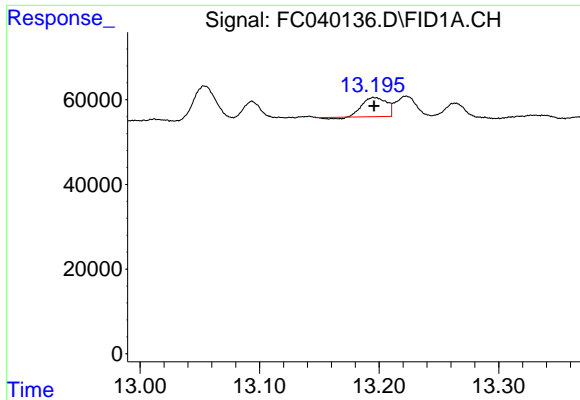
#11 n-Heneicosane (C21)

R.T.: 12.618 min
Delta R.T.: 0.008 min
Response: 90625
Conc: 0.90 ug/ml

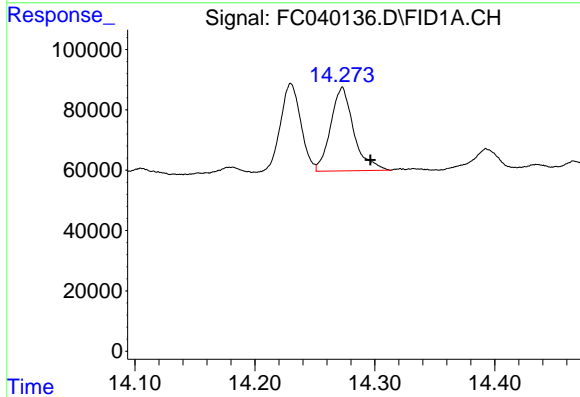


#12 1-chlorooctadecane (SURR)

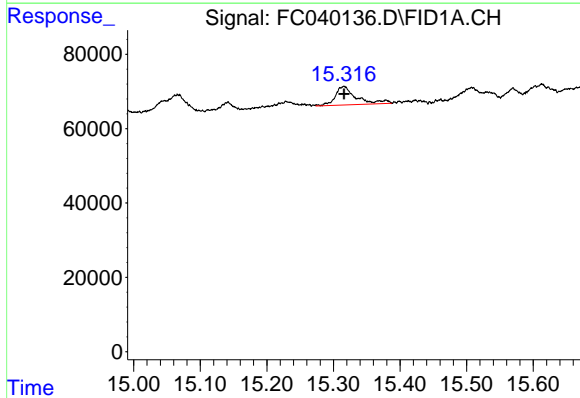
R.T.: 12.443 min
Delta R.T.: -0.002 min
Response: 4935214
Conc: 49.96 ug/ml



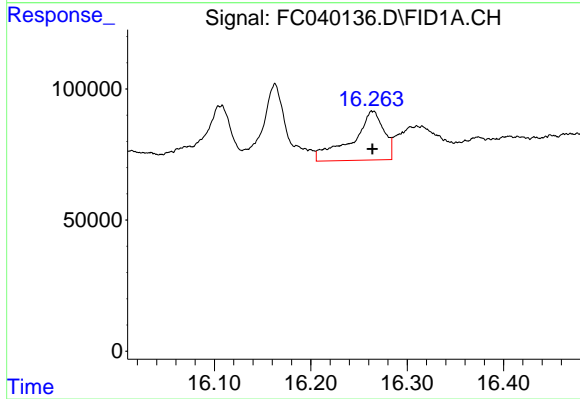
#13 n-Docosane (C22)
 R.T.: 13.196 min
 Delta R.T.: 0.000 min
 Response: 62942
 Conc: 0.63 ug/ml



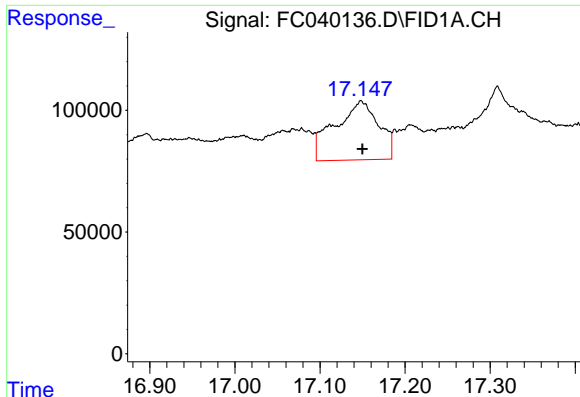
#14 n-Tetracosane (C24)
 R.T.: 14.273 min
 Delta R.T.: -0.024 min
 Response: 369916
 Conc: 3.72 ug/ml



#15 n-Hexacosane (C26)
 R.T.: 15.315 min
 Delta R.T.: 0.000 min
 Response: 108302
 Conc: 1.11 ug/ml

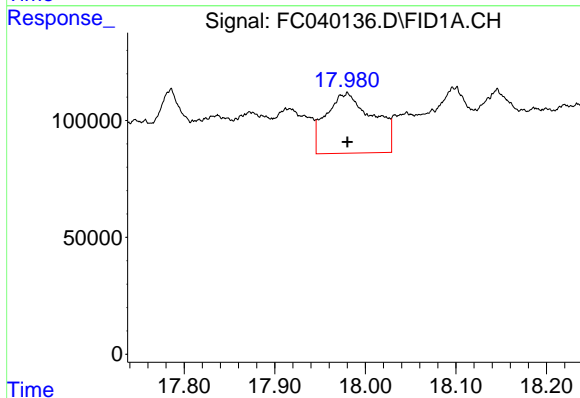


#16 n-Octacosane (C28)
 R.T.: 16.264 min
 Delta R.T.: 0.000 min
 Response: 429000
 Conc: 4.37 ug/ml



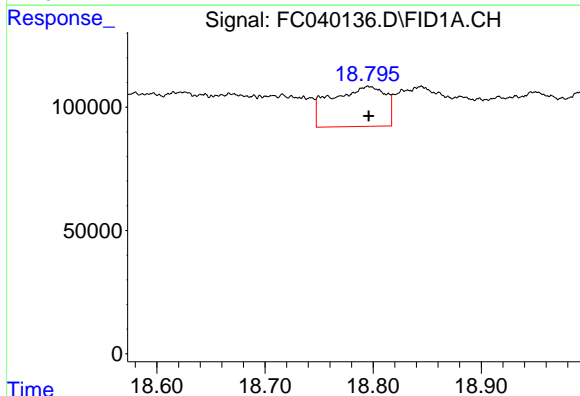
#17 n-Tricontane (C30)

R.T.: 17.149 min
Delta R.T.: -0.001 min
Response: 866038
Conc: 8.85 ug/ml



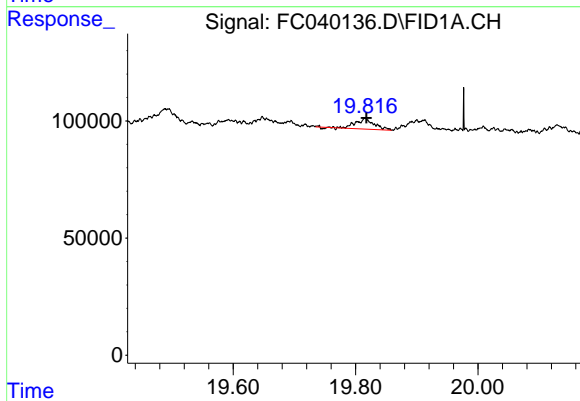
#18 n-Dotriacontane (C32)

R.T.: 17.980 min
Delta R.T.: 0.000 min
Response: 930105
Conc: 9.61 ug/ml



#19 n-Tetratriacontane (C34)

R.T.: 18.796 min
Delta R.T.: 0.000 min
Response: 565739
Conc: 6.75 ug/ml



#20 n-Hexatriacontane (C36)

R.T.: 19.816 min
Delta R.T.: -0.002 min
Response: 93388
Conc: 1.27 ug/ml