

Data Path : Z:\pestpcbsrv\HPCHEM1\FID_C\Data\FC032620AL\
 Data File : FC046496.D
 Signal(s) : FID1A.CH
 Acq On : 26 Mar 2020 20:40
 Operator : DD\AJ
 Sample : L1757-09DL 10X
 Misc :
 ALS Vial : 14 Sample Multiplier: 1

Integration File: autoint1.e
 Quant Time: Mar 27 02:42:16 2020
 Quant Method : Z:\pestpcbsrv\HPCHEM1\FID_C\Method\Alaphatic EPH 032320.M
 Quant Title : GC Extractables
 QLast Update : Tue Mar 24 12:45:07 2020
 Response via : Initial Calibration
 Integrator: ChemStation 6890 Scale Mode: Large solvent peaks clipped

Volume Inj. : 1 ul
 Signal Phase : Rxi-1ms
 Signal Info : 20M x 0.18mm x 0.18um

Compound	R.T.	Response	Conc Units

System Monitoring Compounds			
9) S ortho-Terphenyl (SURR)	11.759	281221	2.573 ug/ml
Spiked Amount	50.000	Recovery =	5.15%
12) S 1-chlorooctadecane (S...	13.177	295513	3.429 ug/ml
Spiked Amount	50.000	Recovery =	6.86%
Target Compounds			
2) T n-Decane (C10)	4.609	249701	2.600 ug/ml
3) T A~Naphthalene (C11.7)	6.279f	182012	1.817 ug/ml
4) T n-Dodecane (C12)	6.618	616427	6.315 ug/ml
5) T A~2-methylnaphthalene...	7.272	228550	2.261 ug/ml
6) T n-Tetradecane (C14)	8.402	505215	5.131 ug/ml
19) T n-Tetratriacontane (C34)	19.477	200604	2.800 ug/ml

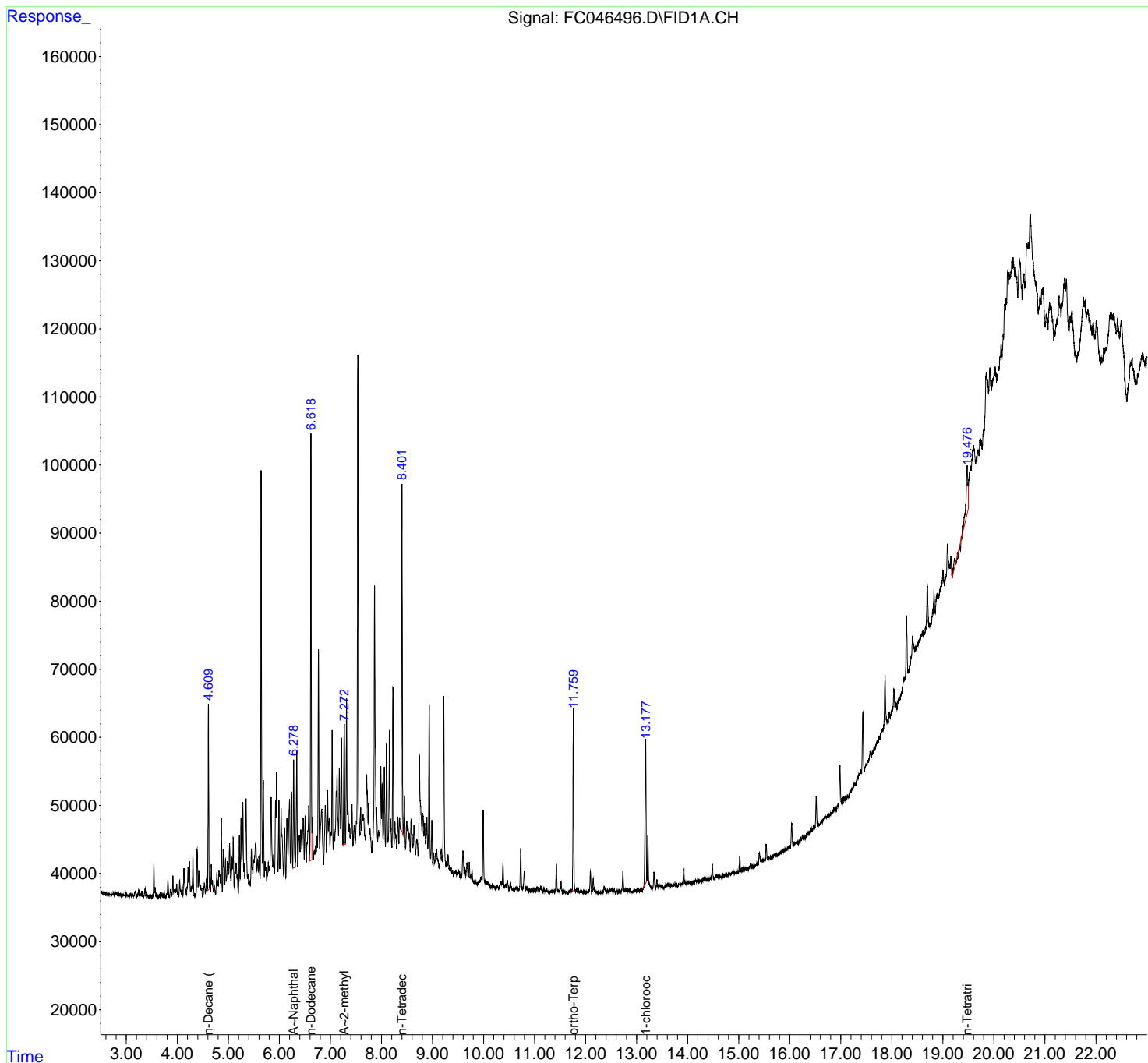
(f)=RT Delta > 1/2 Window

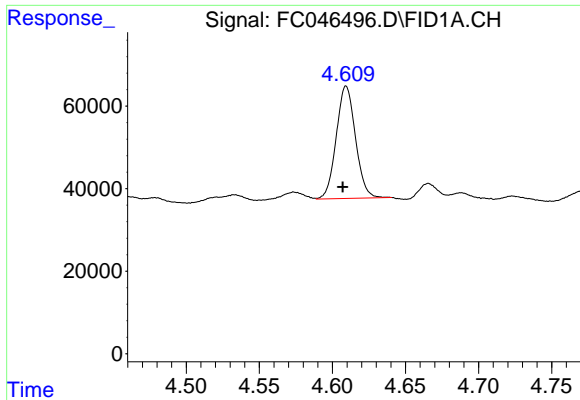
(m)=manual int.

Data Path : Z:\pestpcbsrv\HPCHEM1\FID_C\Data\FC032620AL\
 Data File : FC046496.D
 Signal(s) : FID1A.CH
 Acq On : 26 Mar 2020 20:40
 Operator : DD\AJ
 Sample : L1757-09DL 10X
 Misc :
 ALS Vial : 14 Sample Multiplier: 1

Integration File: autoint1.e
 Quant Time: Mar 27 02:42:16 2020
 Quant Method : Z:\pestpcbsrv\HPCHEM1\FID_C\Method\Alaphatic EPH 032320.M
 Quant Title : GC Extractables
 QLast Update : Tue Mar 24 12:45:07 2020
 Response via : Initial Calibration
 Integrator: ChemStation 6890 Scale Mode: Large solvent peaks clipped

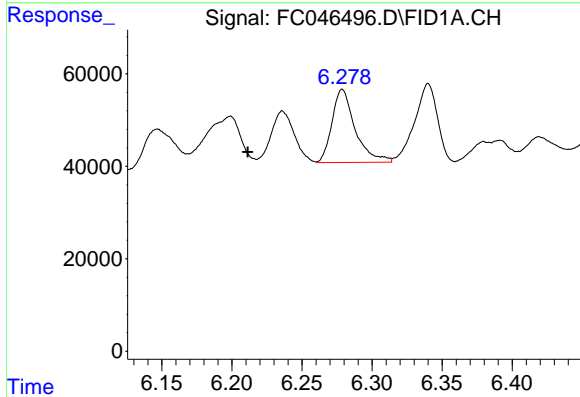
Volume Inj. : 1 ul
 Signal Phase : Rxi-1ms
 Signal Info : 20M x 0.18mm x 0.18um





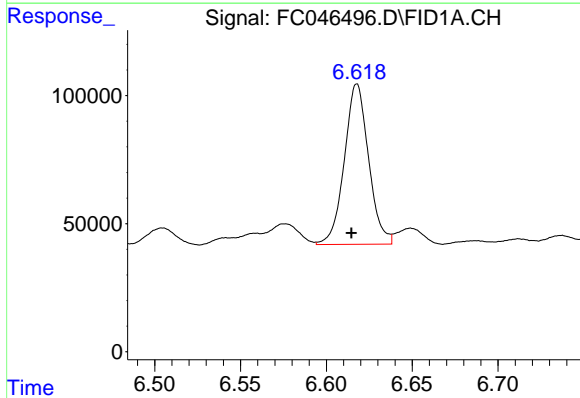
#2 n-Decane (C10)

R.T.: 4.609 min
Delta R.T.: 0.002 min
Response: 249701
Conc: 2.60 ug/ml



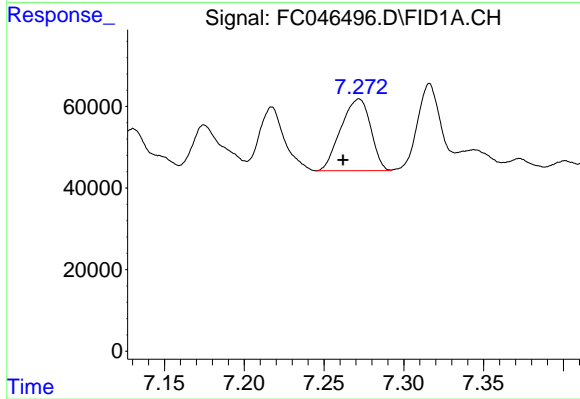
#3 A~Naphthalene (C11.7)

R.T.: 6.279 min
Delta R.T.: 0.067 min
Response: 182012
Conc: 1.82 ug/ml



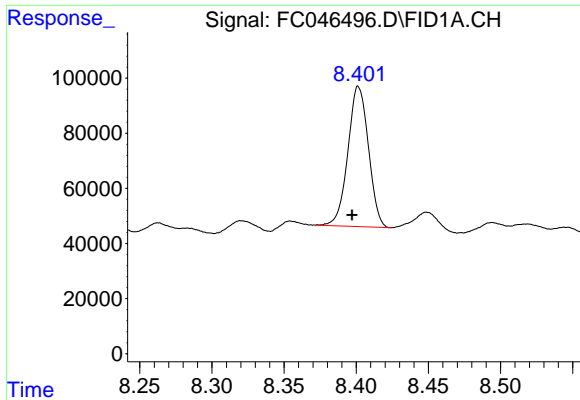
#4 n-Dodecane (C12)

R.T.: 6.618 min
Delta R.T.: 0.003 min
Response: 616427
Conc: 6.32 ug/ml



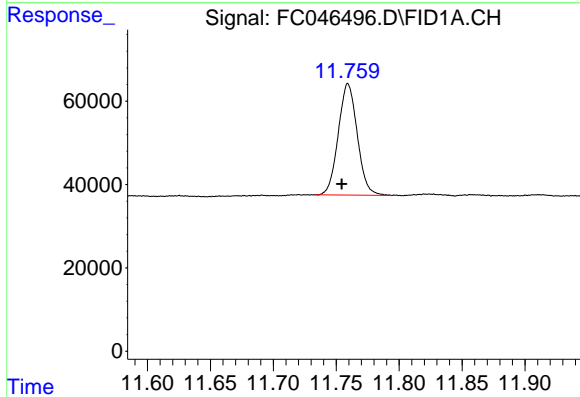
#5 A~2-methylnaphthalene (C12.89)

R.T.: 7.272 min
Delta R.T.: 0.010 min
Response: 228550
Conc: 2.26 ug/ml



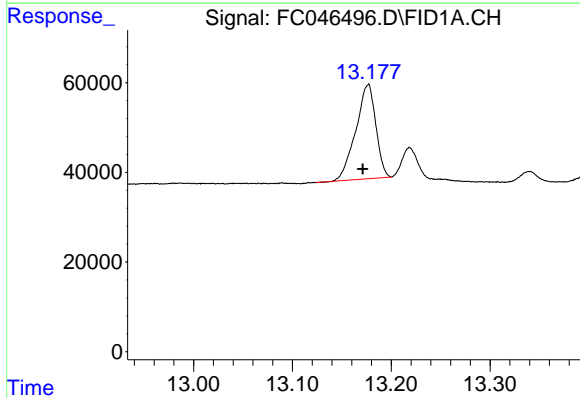
#6 n-Tetradecane (C14)

R.T.: 8.402 min
Delta R.T.: 0.004 min
Response: 505215
Conc: 5.13 ug/ml



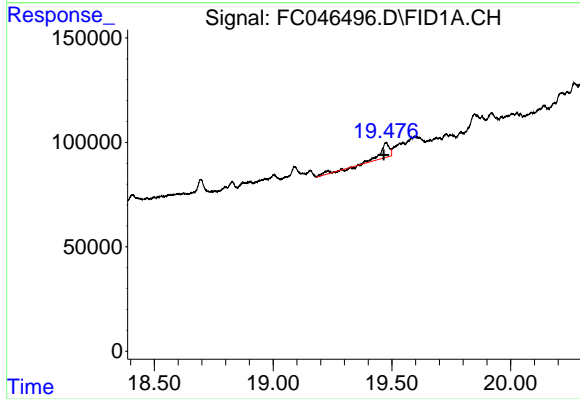
#9 ortho-Terphenyl (SURR)

R.T.: 11.759 min
Delta R.T.: 0.005 min
Response: 281221
Conc: 2.57 ug/ml



#12 1-chlorooctadecane (SURR)

R.T.: 13.177 min
Delta R.T.: 0.005 min
Response: 295513
Conc: 3.43 ug/ml



#19 n-Tetratriacontane (C34)

R.T.: 19.477 min
Delta R.T.: 0.011 min
Response: 200604
Conc: 2.80 ug/ml