

Data Path : Z:\pestpcbsrv\HPCHEM1\FID\_C\Data\FC032922AL\  
 Data File : FC058982.D  
 Signal(s) : FID1A.CH  
 Acq On : 30 Mar 2022 17:08  
 Operator : UA/NP  
 Sample : 20 PPM ALIPHATIC HC STD  
 Misc :  
 ALS Vial : 2 Sample Multiplier: 1

Instrument :  
 FID\_C  
 ClientSampleId :

Integration File: autoint1.e  
 Quant Time: Mar 31 01:11:30 2022  
 Quant Method : Z:\pestpcbsrv\HPCHEM1\FID\_C\Method\Aliphatic EPH 032522.M  
 Quant Title : GC Extractables  
 QLast Update : Fri Mar 25 23:18:46 2022  
 Response via : Initial Calibration  
 Integrator: ChemStation 6890 Scale Mode: Large solvent peaks clipped

Volume Inj. : 1 ul  
 Signal Phase : Rxi-1ms  
 Signal Info : 20M x 0.18mm x 0.18um

Compound	R.T.	Response	Conc Units
-----			
System Monitoring Compounds			
9) S ortho-Terphenyl (SURR)	11.097	2955174	20.510 ug/ml
Spiked Amount	50.000	Recovery	= 41.02%
12) S 1-chlorooctadecane (S...	12.547	2289689	20.426 ug/ml
Spiked Amount	50.000	Recovery	= 40.85%
Target Compounds			
1) T n-Nonane (C9)	2.952	2574783	21.011 ug/ml
2) T n-Decane (C10)	3.995	2592660	21.157 ug/ml
3) T A~Naphthalene (C11.7)	5.543	2691699	21.439 ug/ml
4) T n-Dodecane (C12)	5.995	2672868	20.926 ug/ml
5) T A~2-methylnaphthalene...	6.592	2719881	21.216 ug/ml
6) T n-Tetradecane (C14)	7.781	2704694	20.802 ug/ml
7) T n-Hexadecane (C16)	9.373	2716803	20.459 ug/ml
8) T n-Octadecane (C18)	10.807	2729356	20.528 ug/ml
10) T n-Eicosane (C20)	12.110	2671108	20.386 ug/ml
11) T n-Heneicosane (C21)	12.719	2669032	20.456 ug/ml
13) T n-Docosane (C22)	13.302	2651533	20.468 ug/ml
14) T n-Tetracosane (C24)	14.400	2571694	20.358 ug/ml
15) T n-Hexacosane (C26)	15.416	2495716	20.661 ug/ml
16) T n-Octacosane (C28)	16.360	2478013	20.927 ug/ml
17) T n-Tricontane (C30)	17.246	2450639	21.482 ug/ml
18) T n-Dotriacontane (C32)	18.075	2356696	21.998 ug/ml
19) T n-Tetratriacontane (C34)	18.856	2177410	21.551 ug/ml
20) T n-Hexatriacontane (C36)	19.594	2055232	21.510 ug/ml
21) T n-Octatriacontane (C38)	20.291	2007044	21.811 ug/ml
22) T n-Tetracontane (C40)	21.034	2071860	22.293 ug/ml

(f)=RT Delta > 1/2 Window

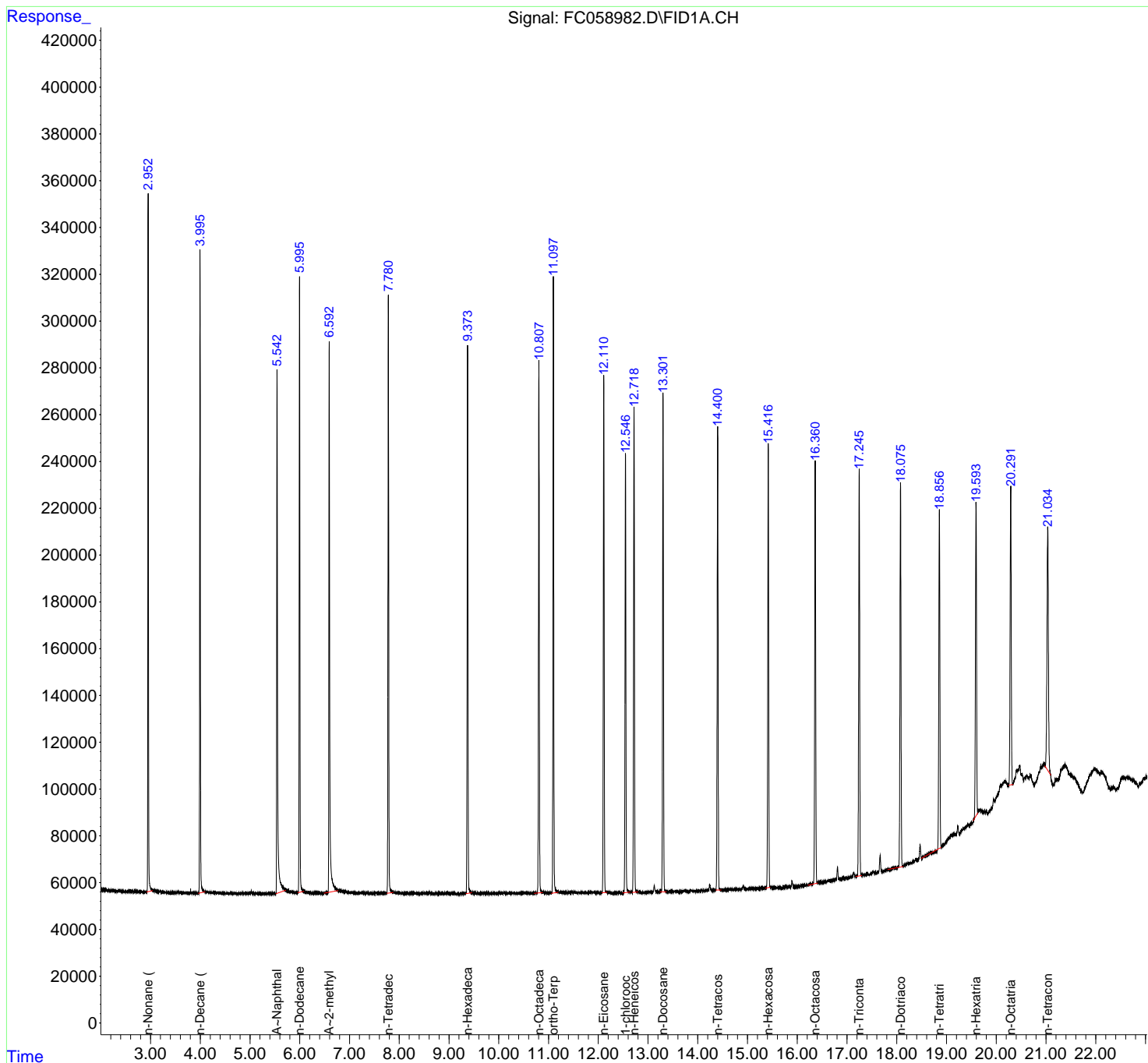
(m)=manual int.

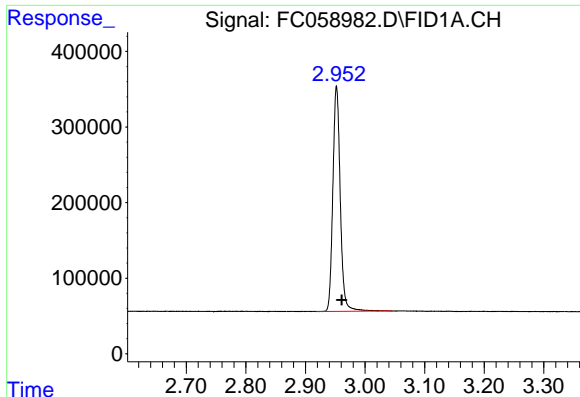
Data Path : Z:\pestpcbsrv\HPCHEM1\FID\_C\Data\FC032922AL\  
 Data File : FC058982.D  
 Signal(s) : FID1A.CH  
 Acq On : 30 Mar 2022 17:08  
 Operator : UA/NP  
 Sample : 20 PPM ALIPHATIC HC STD  
 Misc :  
 ALS Vial : 2 Sample Multiplier: 1

Instrument :  
 FID\_C  
 ClientSampleId :

Integration File: autoint1.e  
 Quant Time: Mar 31 01:11:30 2022  
 Quant Method : Z:\pestpcbsrv\HPCHEM1\FID\_C\Method\Aliphatic EPH 032522.M  
 Quant Title : GC Extractables  
 QLast Update : Fri Mar 25 23:18:46 2022  
 Response via : Initial Calibration  
 Integrator: ChemStation 6890 Scale Mode: Large solvent peaks clipped

Volume Inj. : 1 ul  
 Signal Phase : Rxi-1ms  
 Signal Info : 20M x 0.18mm x 0.18um

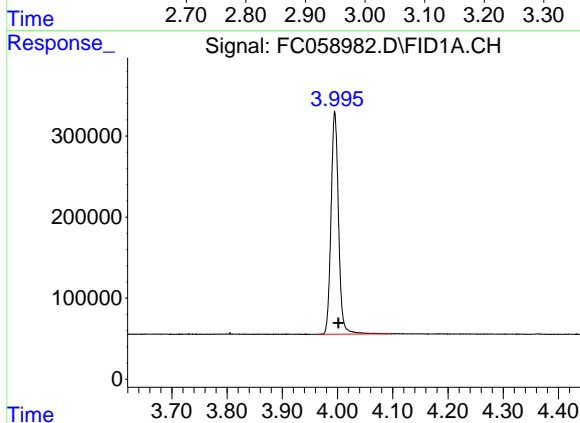




#1 n-Nonane (C9)

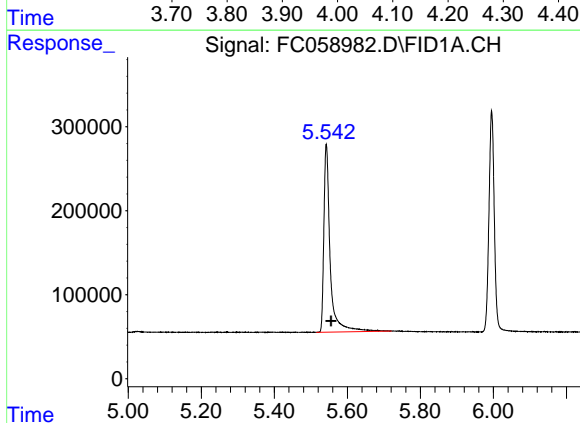
R.T.: 2.952 min  
Delta R.T.: -0.009 min  
Response: 2574783  
Conc: 21.01 ug/ml

Instrument :  
FID\_C  
ClientSampleId :



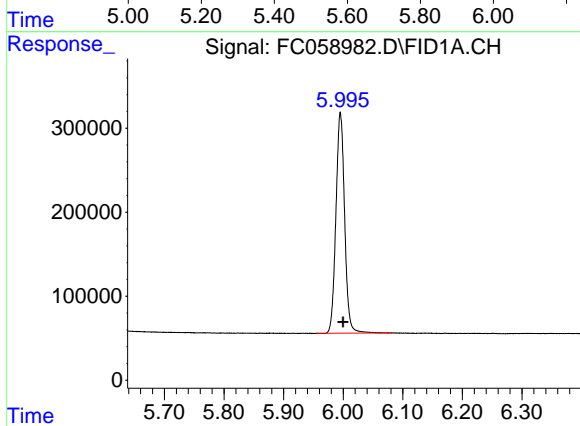
#2 n-Decane (C10)

R.T.: 3.995 min  
Delta R.T.: -0.007 min  
Response: 2592660  
Conc: 21.16 ug/ml



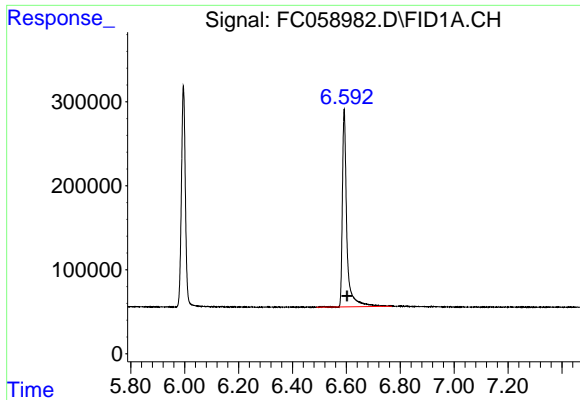
#3 A~Naphthalene (C11.7)

R.T.: 5.543 min  
Delta R.T.: -0.013 min  
Response: 2691699  
Conc: 21.44 ug/ml



#4 n-Dodecane (C12)

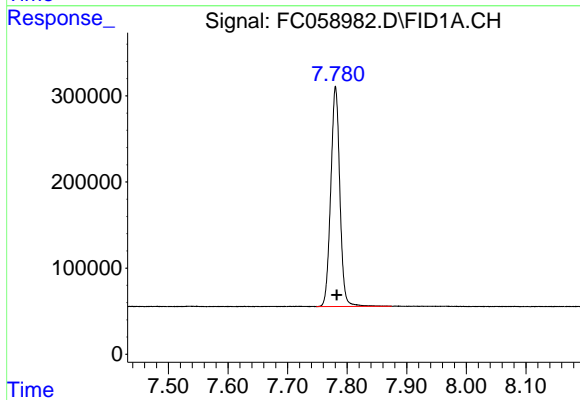
R.T.: 5.995 min  
Delta R.T.: -0.005 min  
Response: 2672868  
Conc: 20.93 ug/ml



#5 A~2-methylnaphthalene (C12.89)

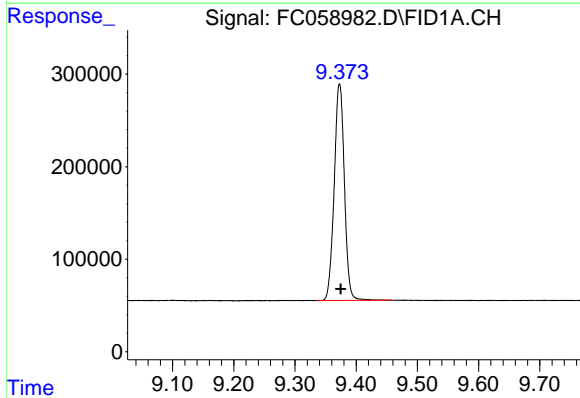
R.T.: 6.592 min  
 Delta R.T.: -0.011 min  
 Response: 2719881  
 Conc: 21.22 ug/ml

Instrument :  
 FID\_C  
 ClientSampleId :



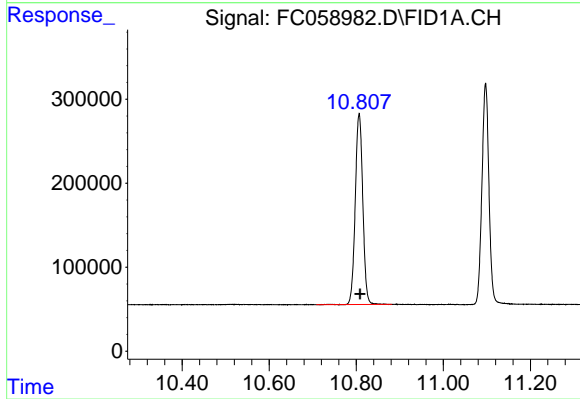
#6 n-Tetradecane (C14)

R.T.: 7.781 min  
 Delta R.T.: -0.002 min  
 Response: 2704694  
 Conc: 20.80 ug/ml



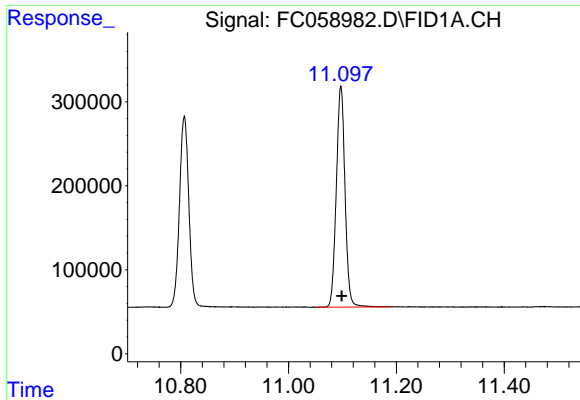
#7 n-Hexadecane (C16)

R.T.: 9.373 min  
 Delta R.T.: -0.002 min  
 Response: 2716803  
 Conc: 20.46 ug/ml



#8 n-Octadecane (C18)

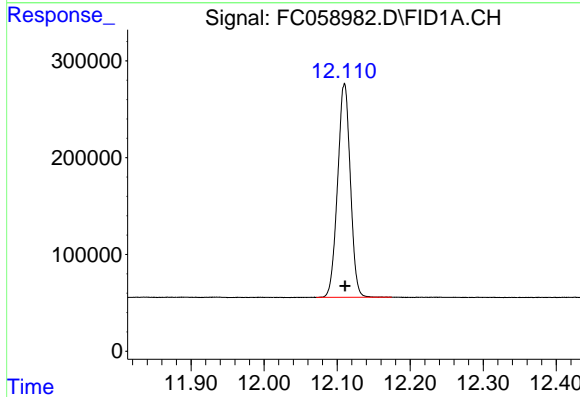
R.T.: 10.807 min  
 Delta R.T.: -0.002 min  
 Response: 2729356  
 Conc: 20.53 ug/ml



#9 ortho-Terphenyl (SURR)

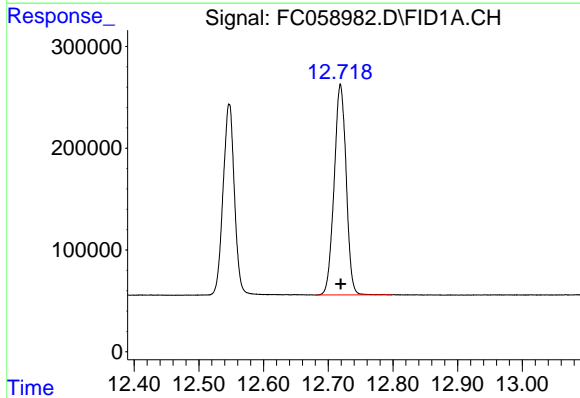
R.T.: 11.097 min  
 Delta R.T.: -0.002 min  
 Response: 2955174  
 Conc: 20.51 ug/ml

Instrument :  
 FID\_C  
 ClientSampleId :



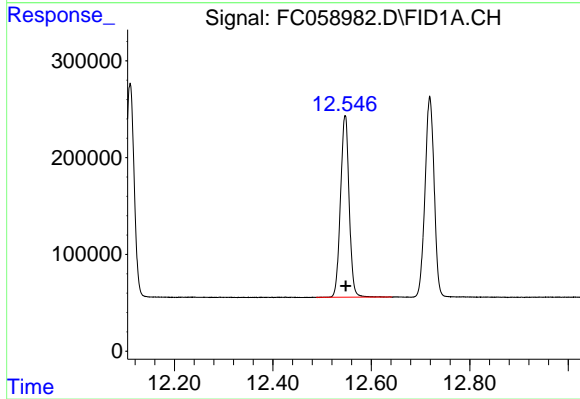
#10 n-Eicosane (C20)

R.T.: 12.110 min  
 Delta R.T.: 0.000 min  
 Response: 2671108  
 Conc: 20.39 ug/ml



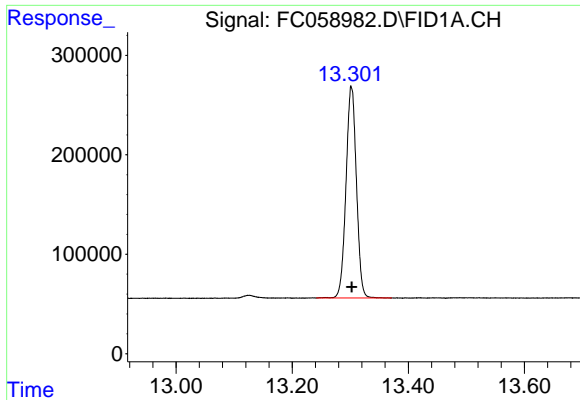
#11 n-Heneicosane (C21)

R.T.: 12.719 min  
 Delta R.T.: 0.000 min  
 Response: 2669032  
 Conc: 20.46 ug/ml



#12 1-chlorooctadecane (SURR)

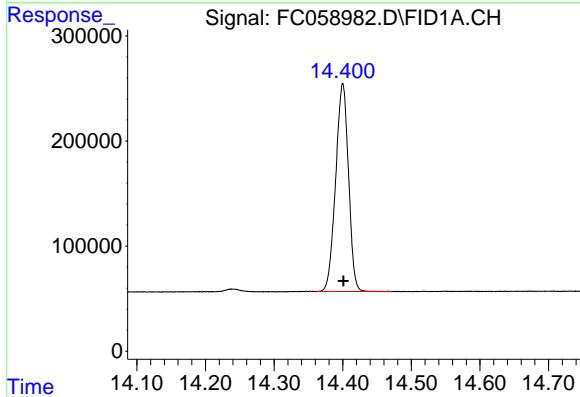
R.T.: 12.547 min  
 Delta R.T.: -0.002 min  
 Response: 2289689  
 Conc: 20.43 ug/ml



#13 n-Docosane (C22)

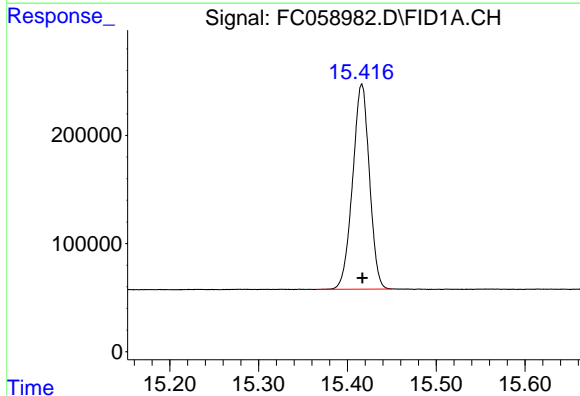
R.T.: 13.302 min  
 Delta R.T.: 0.000 min  
 Response: 2651533  
 Conc: 20.47 ug/ml

Instrument :  
 FID\_C  
 ClientSampleId :



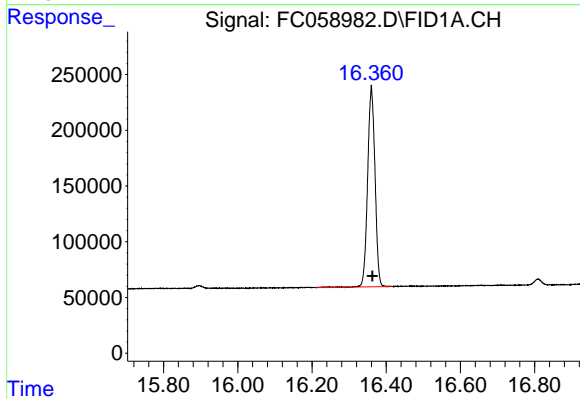
#14 n-Tetracosane (C24)

R.T.: 14.400 min  
 Delta R.T.: -0.001 min  
 Response: 2571694  
 Conc: 20.36 ug/ml



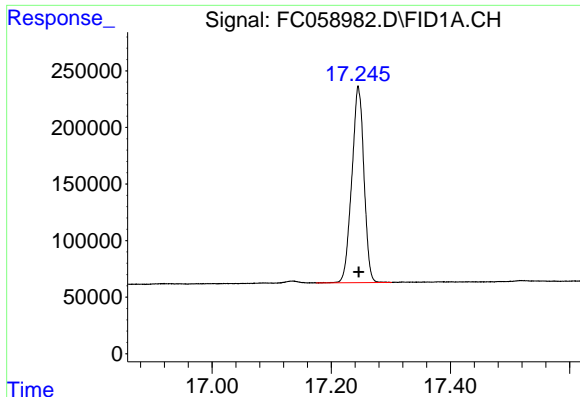
#15 n-Hexacosane (C26)

R.T.: 15.416 min  
 Delta R.T.: -0.001 min  
 Response: 2495716  
 Conc: 20.66 ug/ml



#16 n-Octacosane (C28)

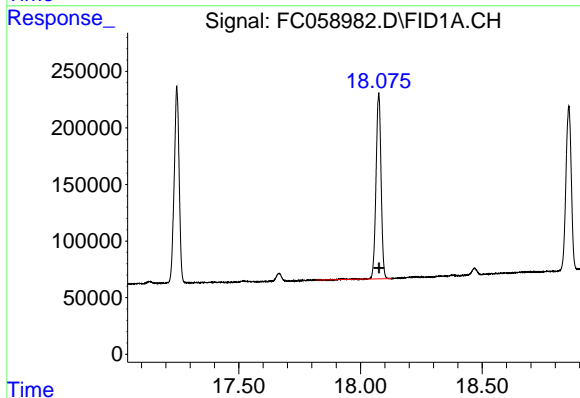
R.T.: 16.360 min  
 Delta R.T.: -0.002 min  
 Response: 2478013  
 Conc: 20.93 ug/ml



#17 n-Tricontane (C30)

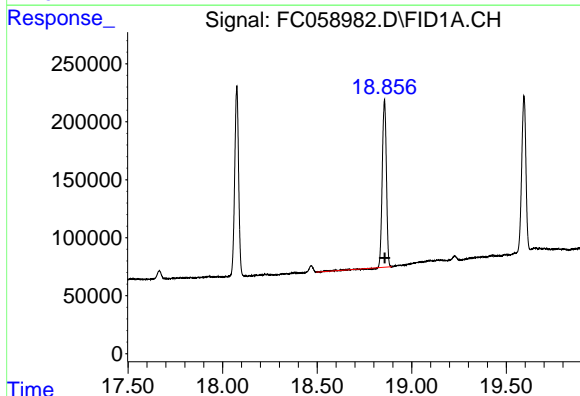
R.T.: 17.246 min  
Delta R.T.: 0.000 min  
Response: 2450639  
Conc: 21.48 ug/ml

Instrument :  
FID\_C  
ClientSampleId :



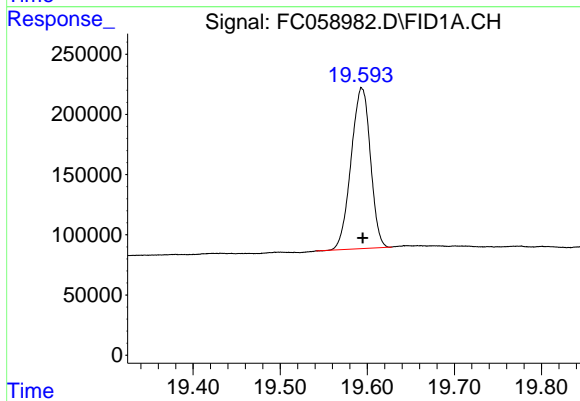
#18 n-Dotriacontane (C32)

R.T.: 18.075 min  
Delta R.T.: -0.002 min  
Response: 2356696  
Conc: 22.00 ug/ml



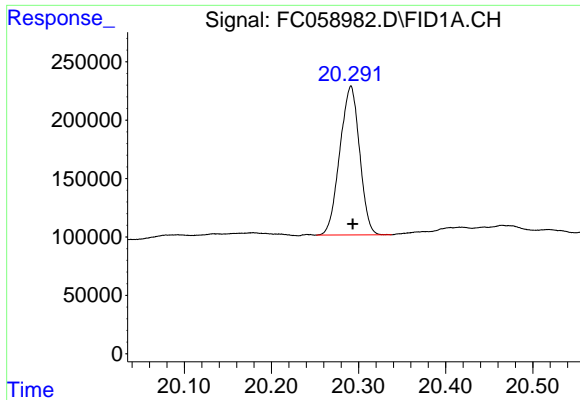
#19 n-Tetratriacontane (C34)

R.T.: 18.856 min  
Delta R.T.: -0.002 min  
Response: 2177410  
Conc: 21.55 ug/ml



#20 n-Hexatriacontane (C36)

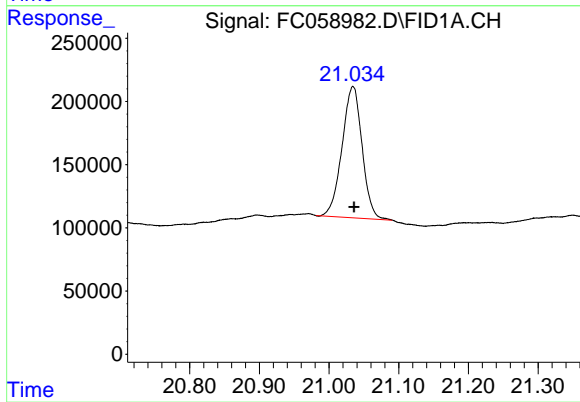
R.T.: 19.594 min  
Delta R.T.: -0.001 min  
Response: 2055232  
Conc: 21.51 ug/ml



#21 n-Octatriacontane (C38)

R.T.: 20.291 min  
Delta R.T.: -0.002 min  
Response: 2007044  
Conc: 21.81 ug/ml

Instrument :  
FID\_C  
ClientSampleId :



#22 n-Tetracontane (C40)

R.T.: 21.034 min  
Delta R.T.: -0.002 min  
Response: 2071860  
Conc: 22.29 ug/ml