

Data Path : Z:\pestpcbsrv\HPCHEM1\FID_C\Data\FC032923AL\
 Data File : FC063262.D
 Signal(s) : FID1A.ch
 Acq On : 29 Mar 2023 19:35
 Operator : YP/AJ
 Sample : 02104-02D
 Misc :
 ALS Vial : 11 Sample Multiplier: 1

Instrument :
 FID_C
 ClientSampleId :

Integration File: autoint1.e
 Quant Time: Mar 30 02:35:28 2023
 Quant Method : Z:\pestpcbsrv\HPCHEM1\FID_C\Method\Aliphatic EPH 031523.M
 Quant Title : GC Extractables
 QLast Update : Thu Mar 16 01:30:46 2023
 Response via : Initial Calibration
 Integrator: ChemStation

Volume Inj. : 1 ul
 Signal Phase : Rxi-1ms
 Signal Info : 20M x 0.18mm x 0.18um

| Compound | R.T. | Response | Conc Units |
|--------------------------------|--------|------------|--------------|
| System Monitoring Compounds | | | |
| 9) S ortho-Terphenyl (SURR) | 11.530 | 398740 | 3.046 ug/ml |
| Spiked Amount | 50.000 | Recovery = | 6.09% |
| 12) S 1-chlorooctadecane (S... | 12.971 | 4420398 | 45.813 ug/ml |
| Spiked Amount | 50.000 | Recovery = | 91.63% |

Target Compounds

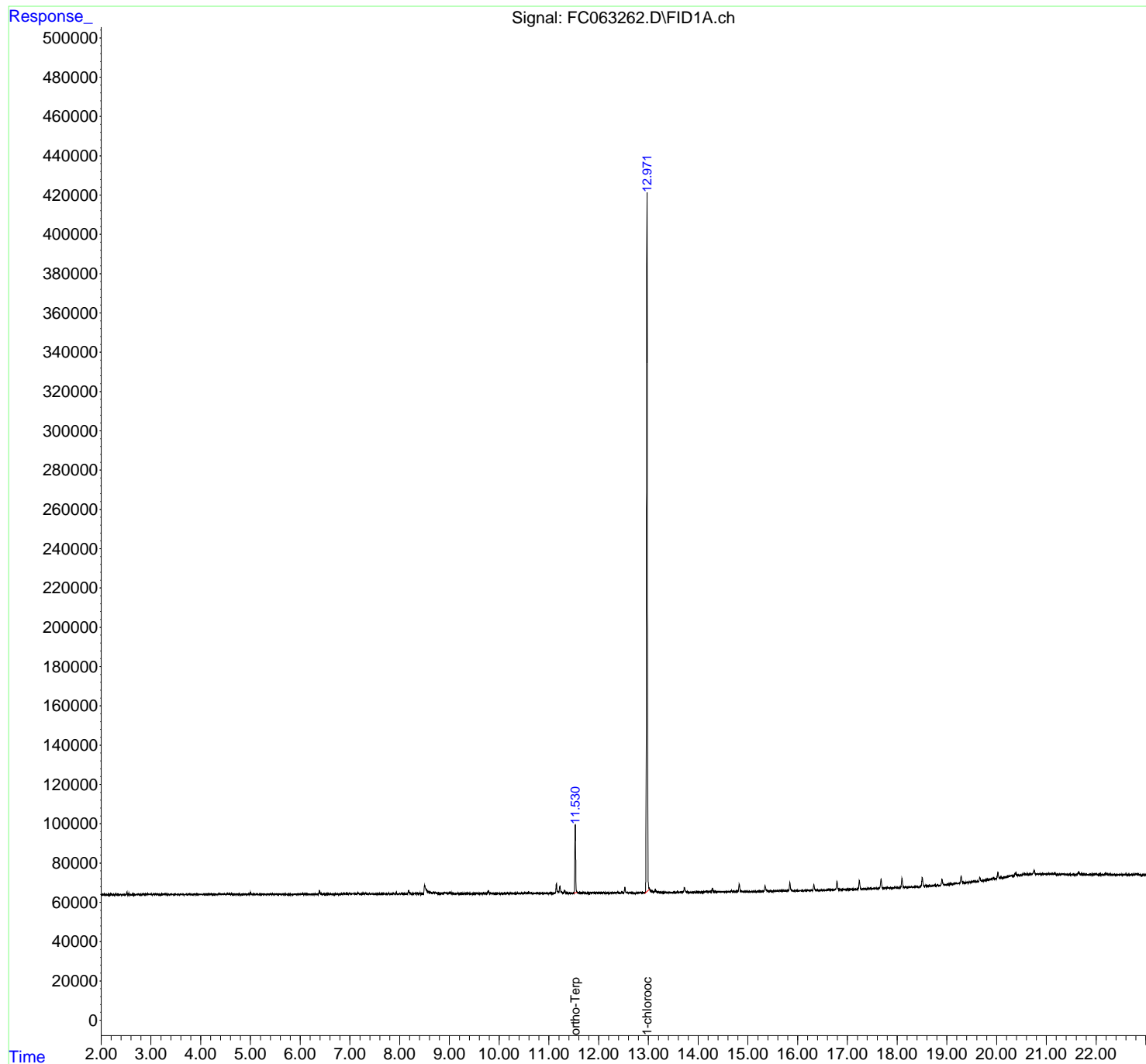
(f)=RT Delta > 1/2 Window (m)=manual int.

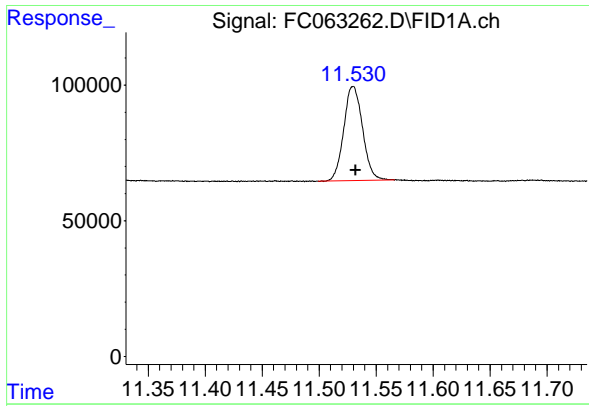
Data Path : Z:\pestpcbsrv\HPCHEM1\FID_C\Data\FC032923AL\
Data File : FC063262.D
Signal(s) : FID1A.ch
Acq On : 29 Mar 2023 19:35
Operator : YP/AJ
Sample : 02104-02D
Misc :
ALS Vial : 11 Sample Multiplier: 1

Instrument :
FID_C
ClientSampleId :

Integration File: autoint1.e
Quant Time: Mar 30 02:35:28 2023
Quant Method : Z:\pestpcbsrv\HPCHEM1\FID_C\Method\Aliphatic EPH 031523.M
Quant Title : GC Extractables
QLast Update : Thu Mar 16 01:30:46 2023
Response via : Initial Calibration
Integrator: ChemStation

Volume Inj. : 1 ul
Signal Phase : Rxi-1ms
Signal Info : 20M x 0.18mm x 0.18um

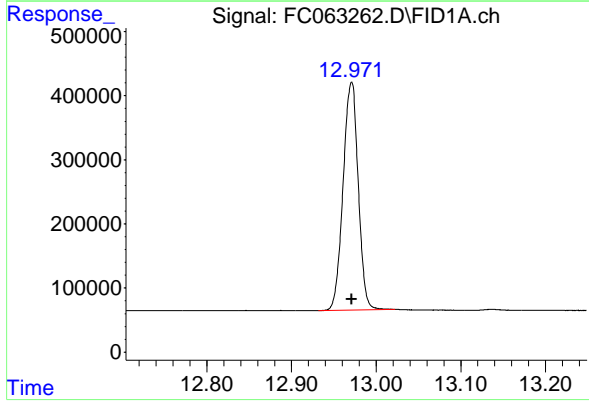




#9 ortho-Terphenyl (SURR)

R.T.: 11.530 min
Delta R.T.: -0.002 min
Response: 398740
Conc: 3.05 ug/ml

Instrument :
FID_C
ClientSampleId :



#12 1-chlorooctadecane (SURR)

R.T.: 12.971 min
Delta R.T.: 0.000 min
Response: 4420398
Conc: 45.81 ug/ml