

Data Path : Z:\pestpcbsrv\HPCHEM1\FID_C\Data\FC033021AL\
 Data File : FC052867.D
 Signal(s) : FID1A.CH
 Acq On : 31 Mar 2021 5:18
 Operator : DD\AJ
 Sample : M1852-02
 Misc :
 ALS Vial : 28 Sample Multiplier: 1

Instrument :
 FID_C
 ClientSampleId :
 OR-03-032921-EPH-2

Integration File: autoint1.e
 Quant Time: Mar 31 06:33:26 2021
 Quant Method : Z:\pestpcbsrv\HPCHEM1\FID_C\Method\Alaphatic EPH 031721.M
 Quant Title : GC Extractables
 QLast Update : Wed Mar 17 03:47:28 2021
 Response via : Initial Calibration
 Integrator: ChemStation 6890 Scale Mode: Large solvent peaks clipped

Volume Inj. : 1 ul
 Signal Phase : Rxi-1ms
 Signal Info : 20M x 0.18mm x 0.18um

Compound	R.T.	Response	Conc Units
System Monitoring Compounds			
9) S ortho-Terphenyl (SURR)	11.562	2994328	22.339 ug/ml
Spiked Amount	50.000	Recovery	= 44.68%
12) S 1-chlorooctadecane (S...	13.000	2314697	21.460 ug/ml
Spiked Amount	50.000	Recovery	= 42.92%

Target Compounds

(f)=RT Delta > 1/2 Window

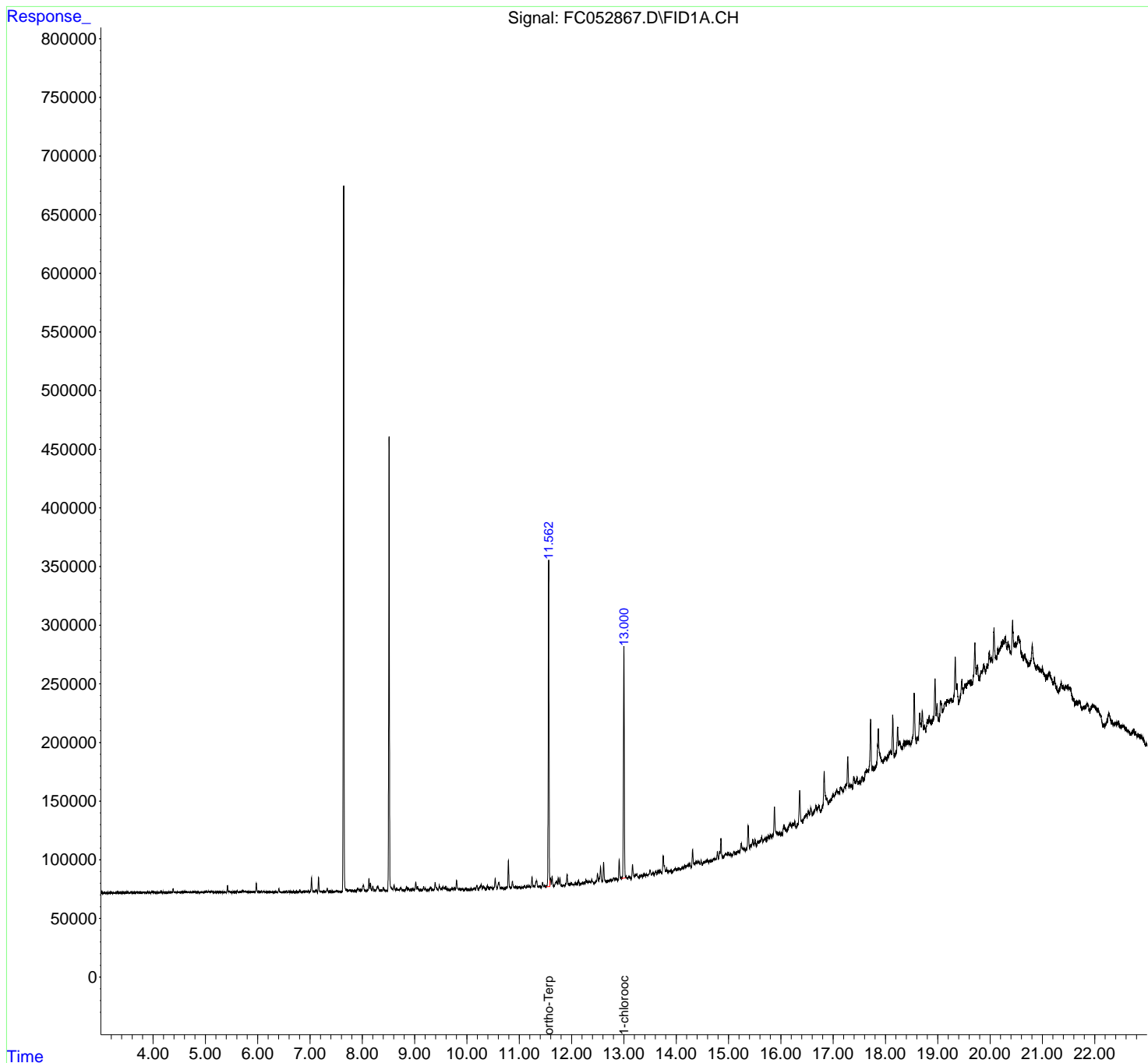
(m)=manual int.

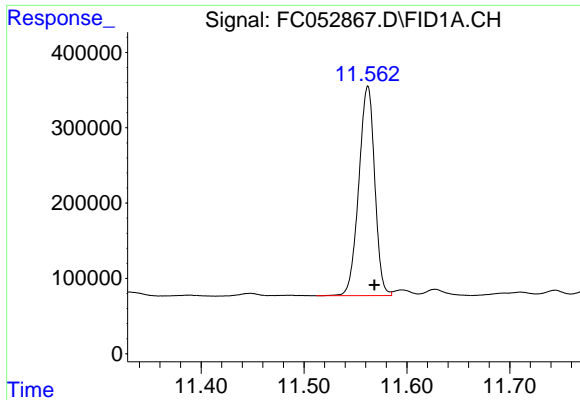
Data Path : Z:\pestpcbsrv\HPCHEM1\FID_C\Data\FC033021AL\
 Data File : FC052867.D
 Signal(s) : FID1A.CH
 Acq On : 31 Mar 2021 5:18
 Operator : DD\AJ
 Sample : M1852-02
 Misc :
 ALS Vial : 28 Sample Multiplier: 1

Instrument :
 FID_C
ClientSampled :
 OR-03-032921-EPH-2

Integration File: autoint1.e
 Quant Time: Mar 31 06:33:26 2021
 Quant Method : Z:\pestpcbsrv\HPCHEM1\FID_C\Method\Alaphatic EPH 031721.M
 Quant Title : GC Extractables
 QLast Update : Wed Mar 17 03:47:28 2021
 Response via : Initial Calibration
 Integrator: ChemStation 6890 Scale Mode: Large solvent peaks clipped

Volume Inj. : 1 ul
 Signal Phase : Rxi-1ms
 Signal Info : 20M x 0.18mm x 0.18um

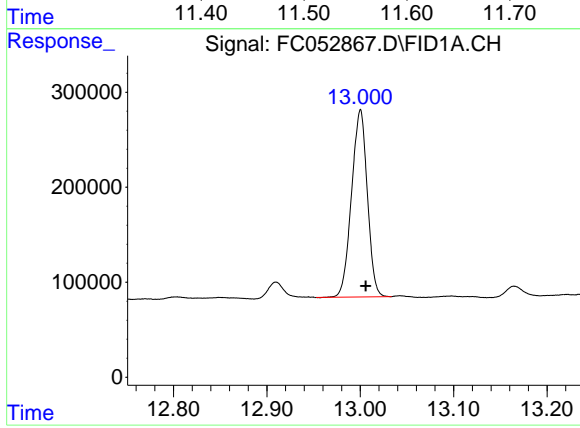




#9 ortho-Terphenyl (SURR)

R.T.: 11.562 min
Delta R.T.: -0.006 min
Response: 2994328
Conc: 22.34 ug/ml

Instrument :
FID_C
ClientSampleId :
OR-03-032921-EPH-2



#12 1-chlorooctadecane (SURR)

R.T.: 13.000 min
Delta R.T.: -0.006 min
Response: 2314697
Conc: 21.46 ug/ml