

Data Path : Z:\pestpcbsrv\HPCHEM1\FID_C\Data\FC033021AL\
 Data File : FC052871.D
 Signal(s) : FID1A.CH
 Acq On : 31 Mar 2021 7:47
 Operator : DD\AJ
 Sample : M1826-01MS
 Misc :
 ALS Vial : 32 Sample Multiplier: 1

Instrument :
 FID_C
 ClientSampleId :
 RO-RBR200035MS

Integration File: autoint1.e
 Quant Time: Mar 31 08:44:11 2021
 Quant Method : Z:\pestpcbsrv\HPCHEM1\FID_C\Method\Alaphatic EPH 031721.M
 Quant Title : GC Extractables
 QLast Update : Wed Mar 17 03:47:28 2021
 Response via : Initial Calibration
 Integrator: ChemStation 6890 Scale Mode: Large solvent peaks clipped

Volume Inj. : 1 ul
 Signal Phase : Rxi-1ms
 Signal Info : 20M x 0.18mm x 0.18um

Compound	R.T.	Response	Conc Units

System Monitoring Compounds			
9) S ortho-Terphenyl (SURR)	11.566	5114088	38.153 ug/ml
Spiked Amount	50.000	Recovery	= 76.31%
12) S 1-chlorooctadecane (S...	13.003	4072697	37.760 ug/ml
Spiked Amount	50.000	Recovery	= 75.52%
Target Compounds			
1) T n-Nonane (C9)	3.323	4260966	36.685 ug/ml
2) T n-Decane (C10)	4.389	4798021	40.944 ug/ml
3) T A~Naphthalene (C11.7)	5.974	5559998	42.467 ug/ml
4) T n-Dodecane (C12)	6.408	5220258	43.478 ug/ml
5) T A~2-methylnaphthalene...	7.033	5802866	43.351 ug/ml
6) T n-Tetradecane (C14)	8.207	5624013	46.500 ug/ml
7) T n-Hexadecane (C16)	9.807	5968134	49.623 ug/ml
8) T n-Octadecane (C18)	11.250	6128491	48.573 ug/ml
10) T n-Eicosane (C20)	12.560	5833349	45.682 ug/ml
11) T n-Heneicosane (C21)	13.172	5729186	45.074 ug/ml
13) T n-Docosane (C22)	13.759	5592963	44.150 ug/ml
14) T n-Tetracosane (C24)	14.851	10507575	84.114 ug/ml
15) T n-Hexacosane (C26)	15.883	5108180	42.422 ug/ml
16) T n-Octacosane (C28)	16.831	5140139	44.583 ug/ml
17) T n-Tricontane (C30)	17.719	5067941	46.516 ug/ml
18) T n-Dotriacontane (C32)	18.551	4914104	48.975 ug/ml
19) T n-Tetratriacontane (C34)	19.333	4793687	52.151 ug/ml
20) T n-Hexatriacontane (C36)	20.072	4633002	50.807 ug/ml
21) T n-Octatriacontane (C38)	20.805	4650167	56.977 ug/ml
22) T n-Tetracontane (C40)	21.710	4711916	54.701 ug/ml

(f)=RT Delta > 1/2 Window

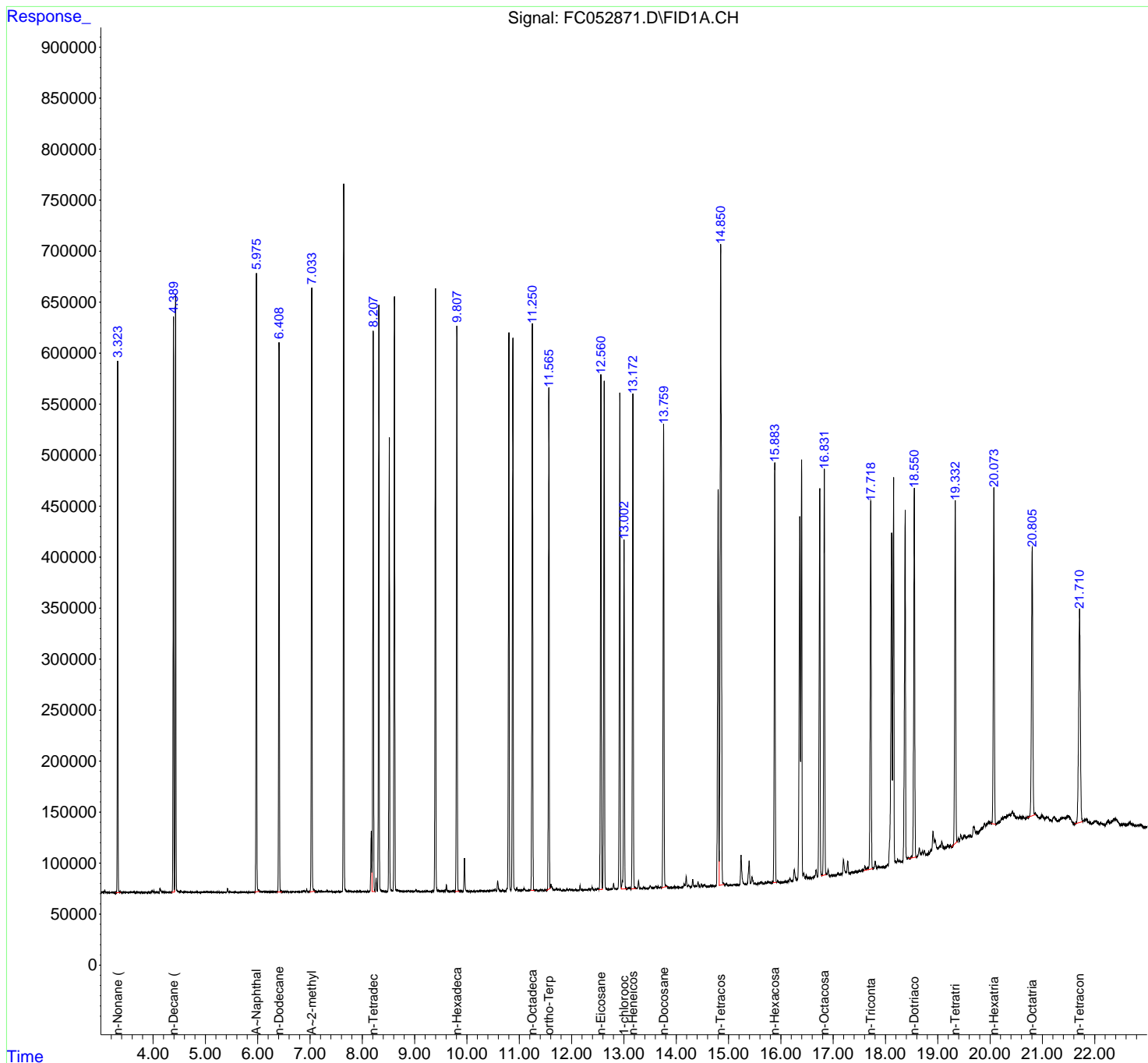
(m)=manual int.

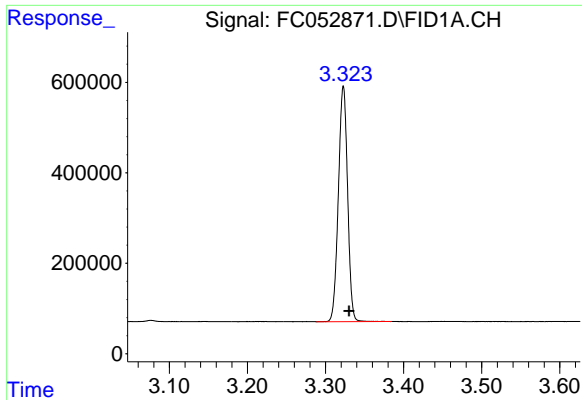
Data Path : Z:\pestpcbsrv\HPCHEM1\FID_C\Data\FC033021AL\
 Data File : FC052871.D
 Signal(s) : FID1A.CH
 Acq On : 31 Mar 2021 7:47
 Operator : DD\AJ
 Sample : M1826-01MS
 Misc :
 ALS Vial : 32 Sample Multiplier: 1

Instrument :
 FID_C
 ClientSampled :
 RO-RBR200035MS

Integration File: autoint1.e
 Quant Time: Mar 31 08:44:11 2021
 Quant Method : Z:\pestpcbsrv\HPCHEM1\FID_C\Method\Aliphatic EPH 031721.M
 Quant Title : GC Extractables
 QLast Update : Wed Mar 17 03:47:28 2021
 Response via : Initial Calibration
 Integrator: ChemStation 6890 Scale Mode: Large solvent peaks clipped

Volume Inj. : 1 ul
 Signal Phase : Rxi-1ms
 Signal Info : 20M x 0.18mm x 0.18um

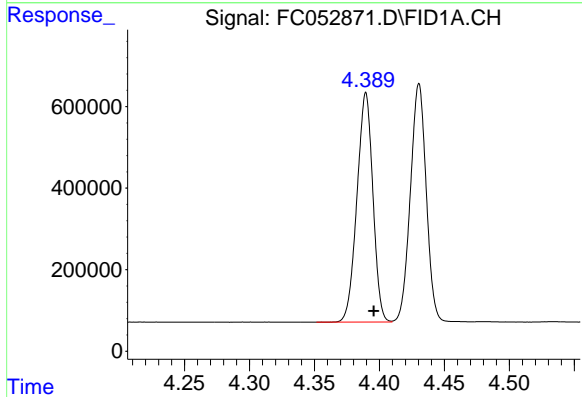




#1 n-Nonane (C9)

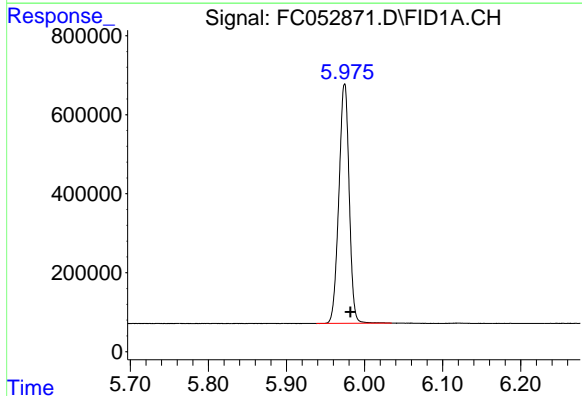
R.T.: 3.323 min
Delta R.T.: -0.007 min
Response: 4260966
Conc: 36.69 ug/ml

Instrument :
FID_C
ClientSampleId :
RO-RBR200035MS



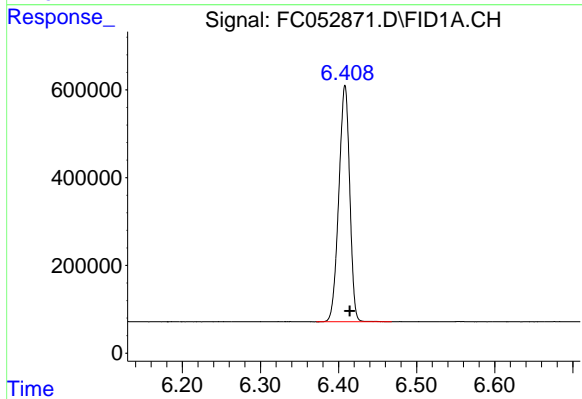
#2 n-Decane (C10)

R.T.: 4.389 min
Delta R.T.: -0.006 min
Response: 4798021
Conc: 40.94 ug/ml



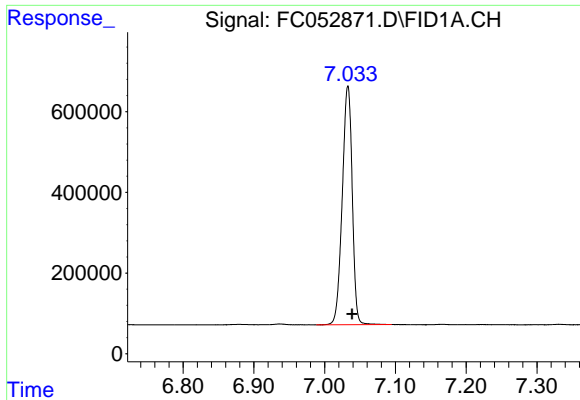
#3 A~Naphthalene (C11.7)

R.T.: 5.974 min
Delta R.T.: -0.008 min
Response: 5559998
Conc: 42.47 ug/ml



#4 n-Dodecane (C12)

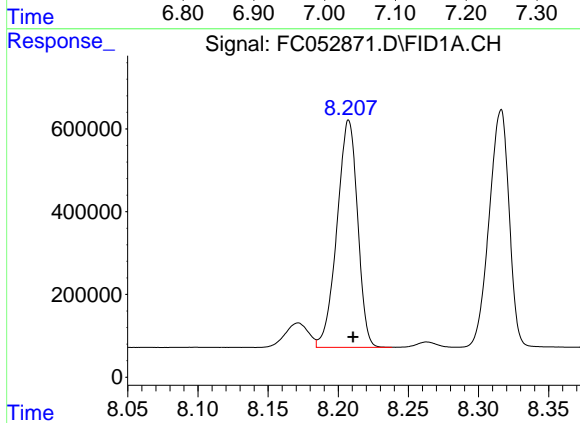
R.T.: 6.408 min
Delta R.T.: -0.006 min
Response: 5220258
Conc: 43.48 ug/ml



#5 A~2-methylnaphthalene (C12.89)

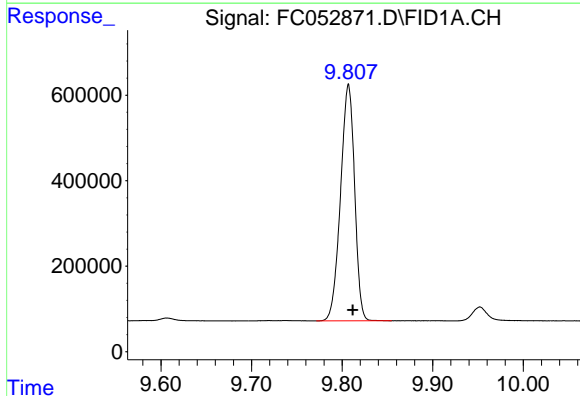
R.T.: 7.033 min
 Delta R.T.: -0.006 min
 Response: 5802866
 Conc: 43.35 ug/ml

Instrument :
 FID_C
 ClientSampleId :
 RO-RBR200035MS



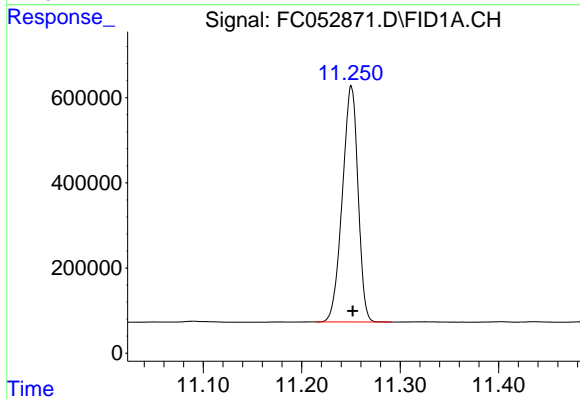
#6 n-Tetradecane (C14)

R.T.: 8.207 min
 Delta R.T.: -0.003 min
 Response: 5624013
 Conc: 46.50 ug/ml



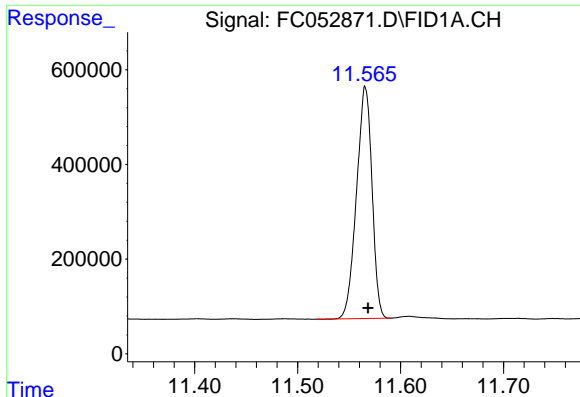
#7 n-Hexadecane (C16)

R.T.: 9.807 min
 Delta R.T.: -0.005 min
 Response: 5968134
 Conc: 49.62 ug/ml



#8 n-Octadecane (C18)

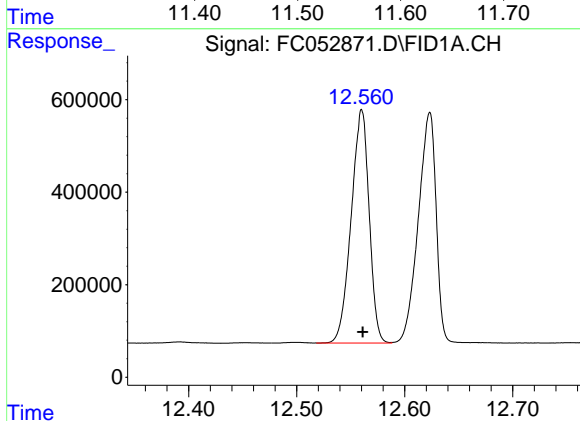
R.T.: 11.250 min
 Delta R.T.: -0.002 min
 Response: 6128491
 Conc: 48.57 ug/ml



#9 ortho-Terphenyl (SURR)

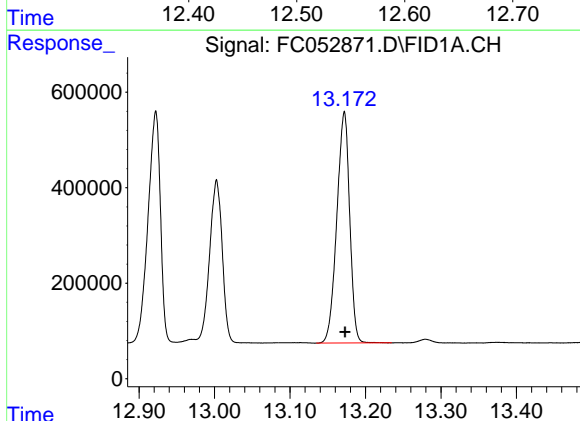
R.T.: 11.566 min
Delta R.T.: -0.003 min
Response: 5114088
Conc: 38.15 ug/ml

Instrument :
FID_C
ClientSampleId :
RO-RBR200035MS



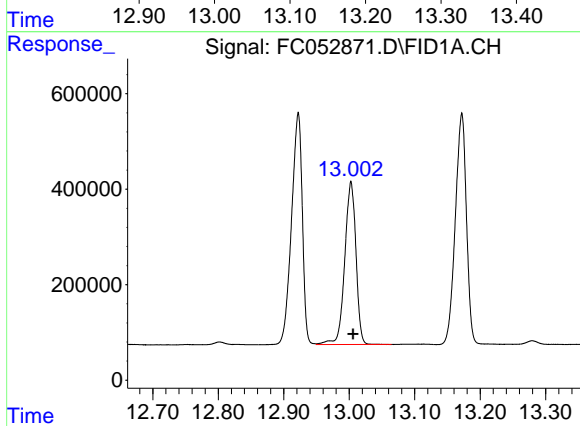
#10 n-Eicosane (C20)

R.T.: 12.560 min
Delta R.T.: -0.001 min
Response: 5833349
Conc: 45.68 ug/ml



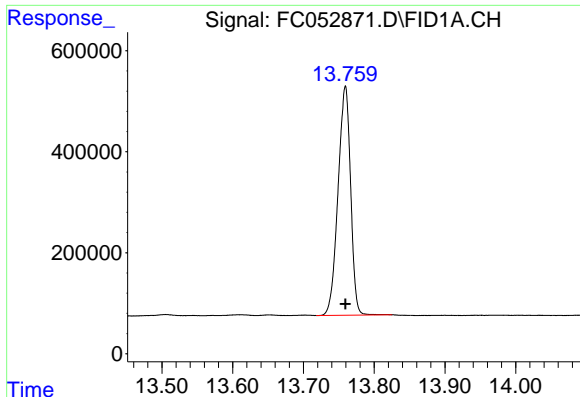
#11 n-Heneicosane (C21)

R.T.: 13.172 min
Delta R.T.: -0.001 min
Response: 5729186
Conc: 45.07 ug/ml



#12 1-chlorooctadecane (SURR)

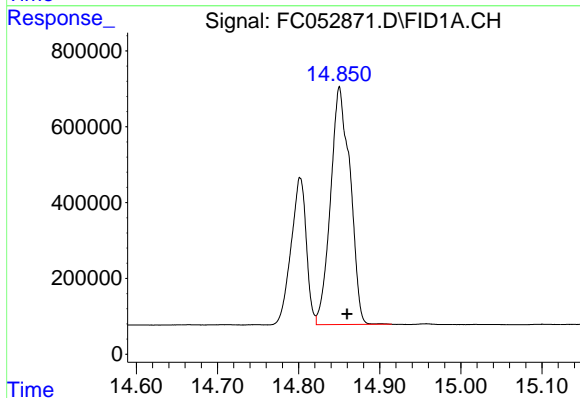
R.T.: 13.003 min
Delta R.T.: -0.003 min
Response: 4072697
Conc: 37.76 ug/ml



#13 n-Docosane (C22)

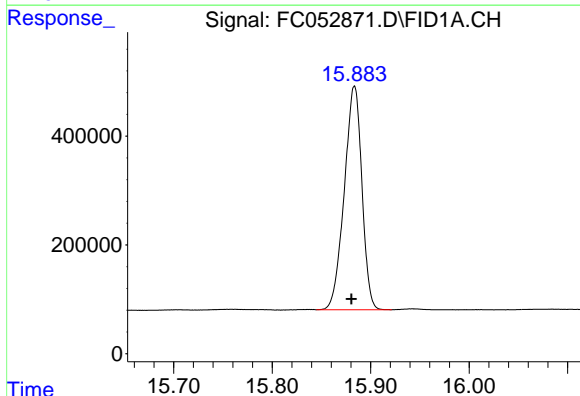
R.T.: 13.759 min
 Delta R.T.: 0.000 min
 Response: 5592963
 Conc: 44.15 ug/ml

Instrument :
 FID_C
 ClientSampleId :
 RO-RBR200035MS



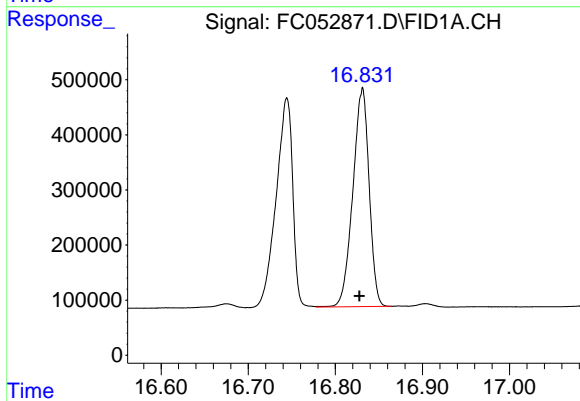
#14 n-Tetracosane (C24)

R.T.: 14.851 min
 Delta R.T.: -0.009 min
 Response: 10507575
 Conc: 84.11 ug/ml



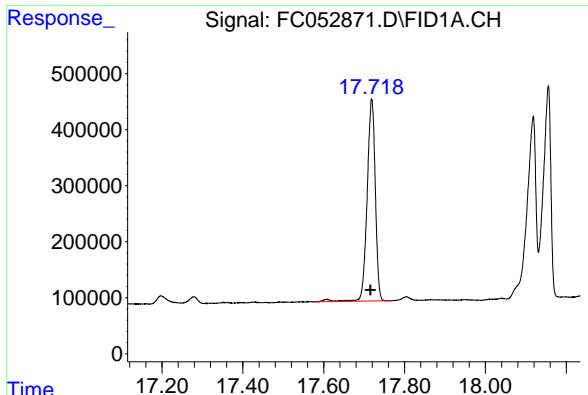
#15 n-Hexacosane (C26)

R.T.: 15.883 min
 Delta R.T.: 0.003 min
 Response: 5108180
 Conc: 42.42 ug/ml



#16 n-Octacosane (C28)

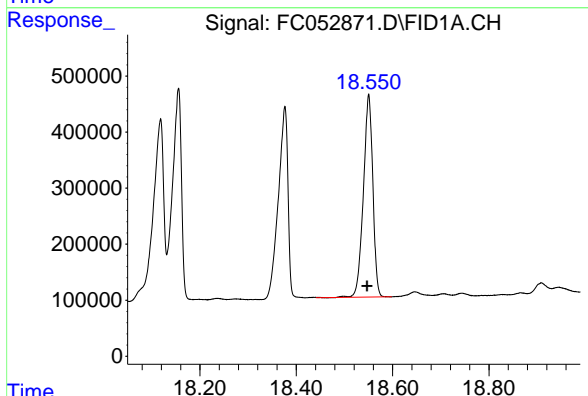
R.T.: 16.831 min
 Delta R.T.: 0.003 min
 Response: 5140139
 Conc: 44.58 ug/ml



#17 n-Tricontane (C30)

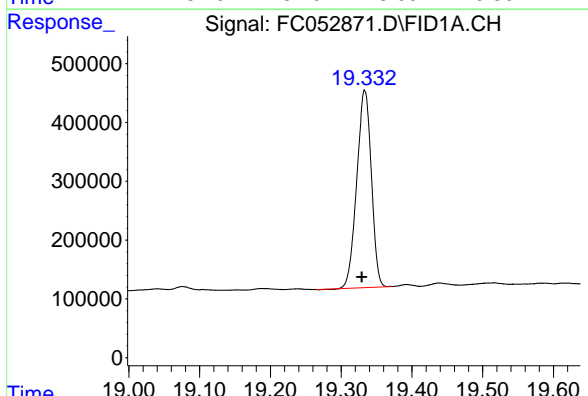
R.T.: 17.719 min
Delta R.T.: 0.003 min
Response: 5067941
Conc: 46.52 ug/ml

Instrument :
FID_C
ClientSampleId :
RO-RBR200035MS



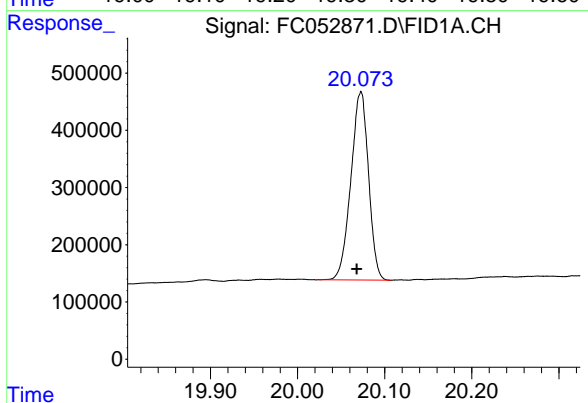
#18 n-Dotriacontane (C32)

R.T.: 18.551 min
Delta R.T.: 0.003 min
Response: 4914104
Conc: 48.98 ug/ml



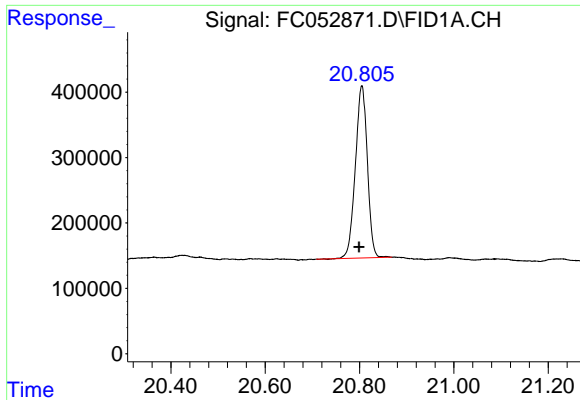
#19 n-Tetratriacontane (C34)

R.T.: 19.333 min
Delta R.T.: 0.004 min
Response: 4793687
Conc: 52.15 ug/ml



#20 n-Hexatriacontane (C36)

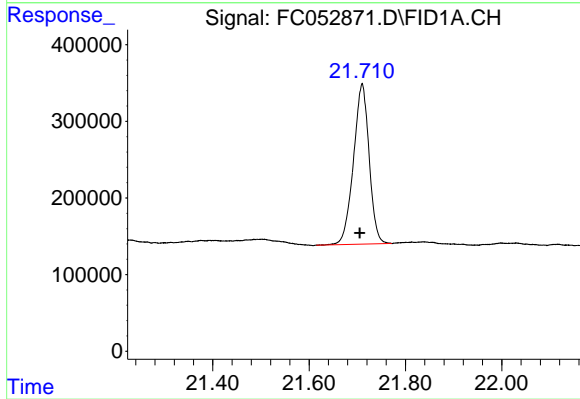
R.T.: 20.072 min
Delta R.T.: 0.005 min
Response: 4633002
Conc: 50.81 ug/ml



#21 n-Octatriacontane (C38)

R.T.: 20.805 min
Delta R.T.: 0.006 min
Response: 4650167
Conc: 56.98 ug/ml

Instrument :
FID_C
ClientSampleId :
RO-RBR200035MS



#22 n-Tetracontane (C40)

R.T.: 21.710 min
Delta R.T.: 0.005 min
Response: 4711916
Conc: 54.70 ug/ml