

Data Path : Z:\pestpcbsrv\HPCHEM1\FID\_C\Data\FC033125AL\  
 Data File : FC068449.D  
 Signal(s) : FID1A.ch  
 Acq On : 31 Mar 2025 16:23  
 Operator : YP/AJ  
 Sample : Q1672-02  
 Misc :  
 ALS Vial : 15 Sample Multiplier: 1

Instrument :  
 FID\_C  
 ClientSampleId :

Integration File: autoint1.e  
 Quant Time: Apr 01 03:18:37 2025  
 Quant Method : Z:\pestpcbsrv\HPCHEM1\FID\_C\Method\Aliphatic EPH 032625.M  
 Quant Title : GC Extractables  
 QLast Update : Wed Mar 26 13:35:27 2025  
 Response via : Initial Calibration  
 Integrator: ChemStation

Volume Inj. : 1 ul  
 Signal Phase : Rxi-1ms  
 Signal Info : 20M x 0.18mm x 0.18um

Compound	R.T.	Response	Conc Units
-----			
System Monitoring Compounds			
9) S ortho-Terphenyl (SURR)	11.389	8494045	42.763 ug/ml
Spiked Amount	50.000	Recovery	= 85.53%
12) S 1-chlorooctadecane (S...	12.830	6327490	42.445 ug/ml
Spiked Amount	50.000	Recovery	= 84.89%

Target Compounds

(f)=RT Delta > 1/2 Window

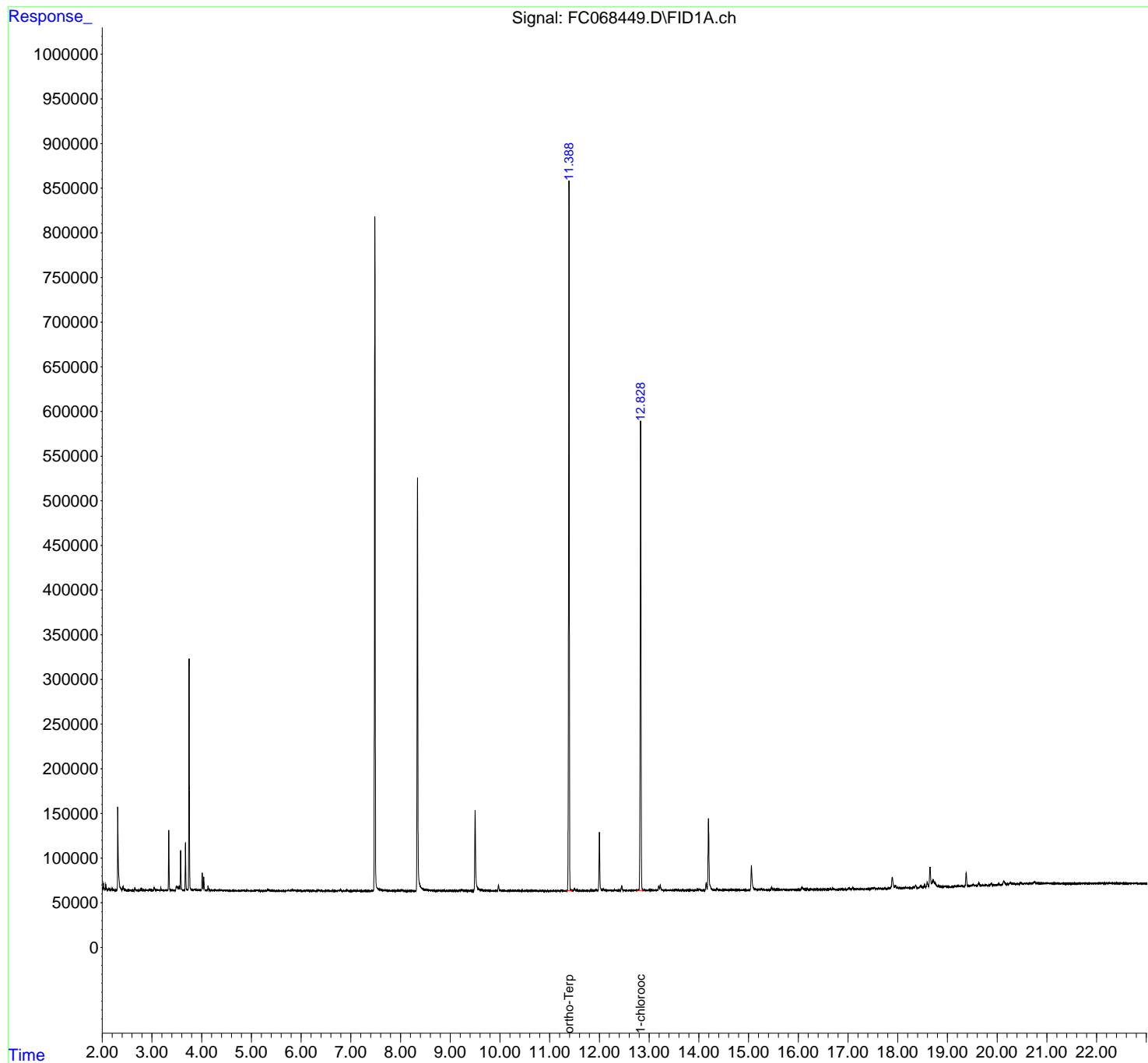
(m)=manual int.

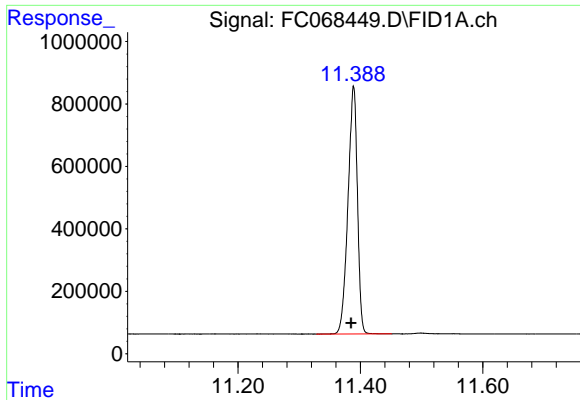
Data Path : Z:\pestpcbsrv\HPCHEM1\FID\_C\Data\FC033125AL\  
 Data File : FC068449.D  
 Signal(s) : FID1A.ch  
 Acq On : 31 Mar 2025 16:23  
 Operator : YP/AJ  
 Sample : Q1672-02  
 Misc :  
 ALS Vial : 15 Sample Multiplier: 1

Instrument :  
 FID\_C  
 ClientSampleId :

Integration File: autoint1.e  
 Quant Time: Apr 01 03:18:37 2025  
 Quant Method : Z:\pestpcbsrv\HPCHEM1\FID\_C\Method\Aliphatic EPH 032625.M  
 Quant Title : GC Extractables  
 QLast Update : Wed Mar 26 13:35:27 2025  
 Response via : Initial Calibration  
 Integrator: ChemStation

Volume Inj. : 1 ul  
 Signal Phase : Rxi-1ms  
 Signal Info : 20M x 0.18mm x 0.18um

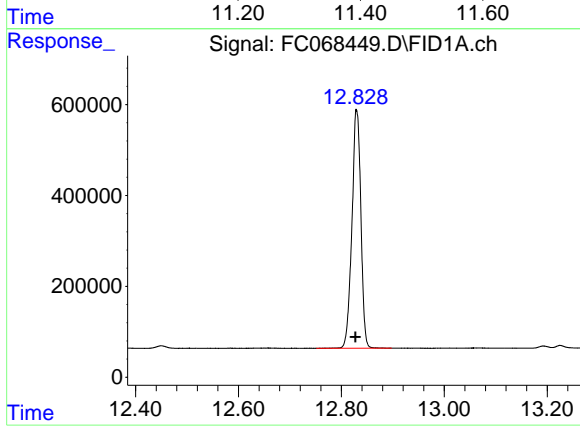




#9 ortho-Terphenyl (SURR)

R.T.: 11.389 min  
Delta R.T.: 0.004 min  
Response: 8494045  
Conc: 42.76 ug/ml

Instrument :  
FID\_C  
ClientSampleId :



#12 1-chlorooctadecane (SURR)

R.T.: 12.830 min  
Delta R.T.: 0.003 min  
Response: 6327490  
Conc: 42.45 ug/ml