

Data Path : Z:\pestpcbsrv\HPCHEM1\FID_C\Data\FC033125AL\
 Data File : FC068459.D
 Signal(s) : FID1A.ch
 Acq On : 31 Mar 2025 22:38
 Operator : YP/AJ
 Sample : Q1675-17
 Misc :
 ALS Vial : 25 Sample Multiplier: 1

Instrument :
 FID_C
 ClientSampleId :
 D5

Integration File: autoint1.e
 Quant Time: Apr 01 03:21:48 2025
 Quant Method : Z:\pestpcbsrv\HPCHEM1\FID_C\Method\Aliphatic EPH 032625.M
 Quant Title : GC Extractables
 QLast Update : Wed Mar 26 13:35:27 2025
 Response via : Initial Calibration
 Integrator: ChemStation

Volume Inj. : 1 ul
 Signal Phase : Rxi-1ms
 Signal Info : 20M x 0.18mm x 0.18um

Compound	R.T.	Response	Conc Units
System Monitoring Compounds			
9) S ortho-Terphenyl (SURR)	11.390	5852009	29.462 ug/ml
Spiked Amount	50.000	Recovery	= 58.92%
12) S 1-chlorooctadecane (S...	12.830	3825417	25.661 ug/ml
Spiked Amount	50.000	Recovery	= 51.32%

Target Compounds

(f)=RT Delta > 1/2 Window

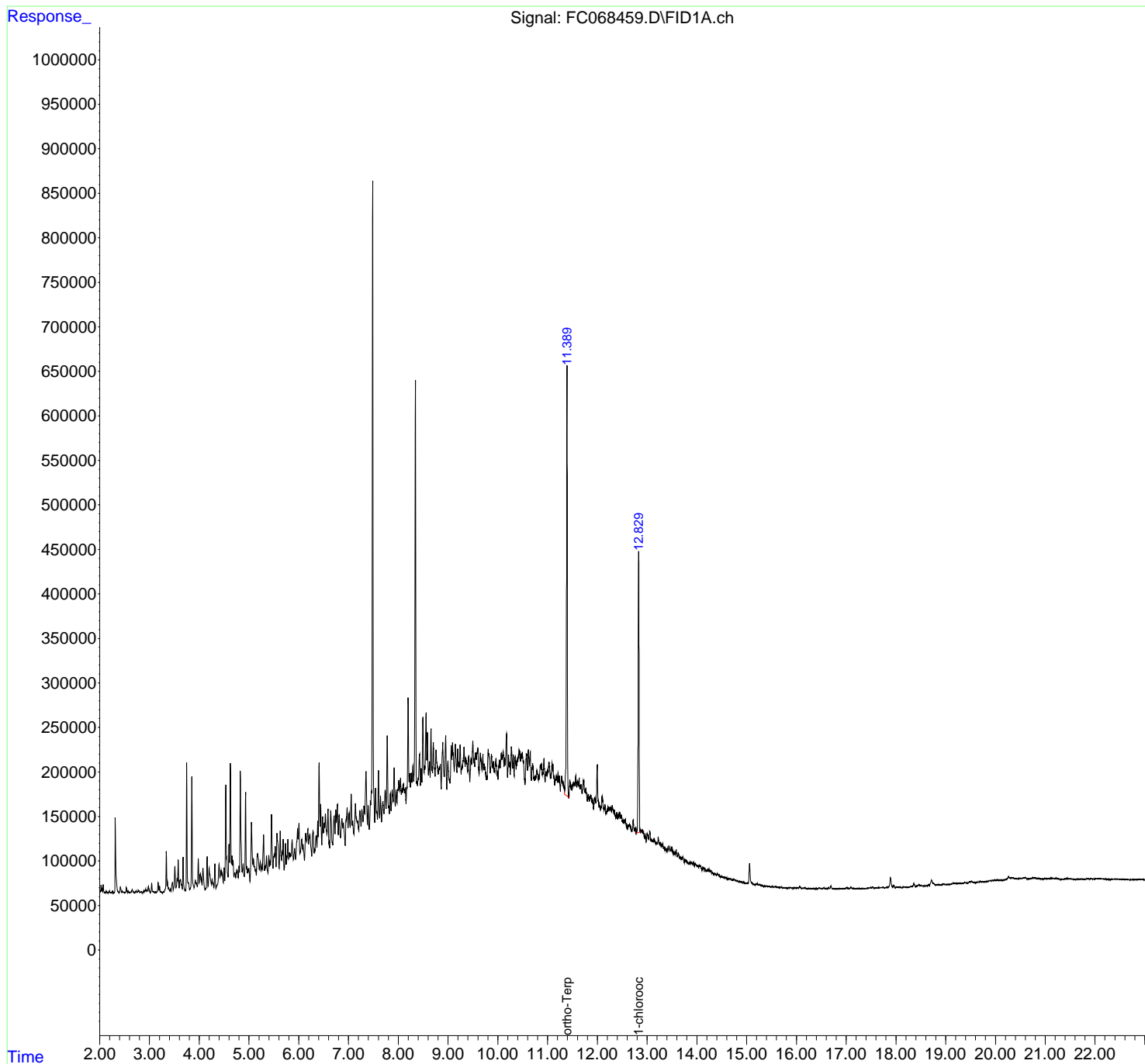
(m)=manual int.

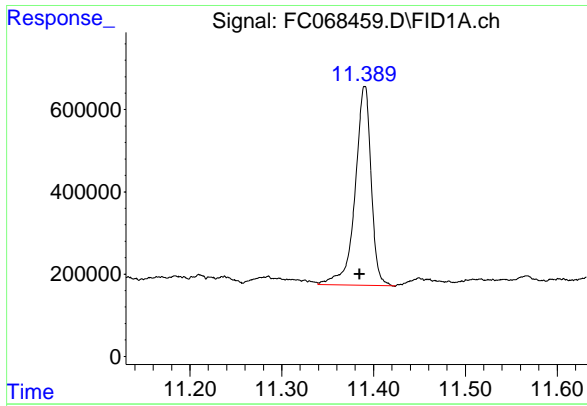
Data Path : Z:\pestpcbsrv\HPCHEM1\FID_C\Data\FC033125AL\
 Data File : FC068459.D
 Signal(s) : FID1A.ch
 Acq On : 31 Mar 2025 22:38
 Operator : YP/AJ
 Sample : Q1675-17
 Misc :
 ALS Vial : 25 Sample Multiplier: 1

Instrument :
 FID_C
 ClientSampleId :
 D5

Integration File: autoint1.e
 Quant Time: Apr 01 03:21:48 2025
 Quant Method : Z:\pestpcbsrv\HPCHEM1\FID_C\Method\Aliphatic EPH 032625.M
 Quant Title : GC Extractables
 QLast Update : Wed Mar 26 13:35:27 2025
 Response via : Initial Calibration
 Integrator: ChemStation

Volume Inj. : 1 ul
 Signal Phase : Rxi-1ms
 Signal Info : 20M x 0.18mm x 0.18um

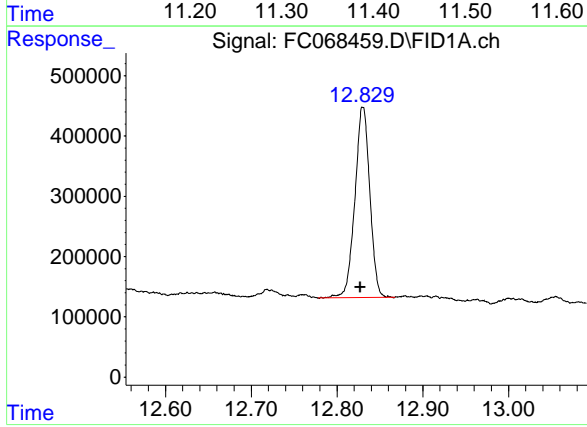




#9 ortho-Terphenyl (SURR)

R.T.: 11.390 min
Delta R.T.: 0.005 min
Response: 5852009
Conc: 29.46 ug/ml

Instrument :
FID_C
ClientSampleId :
D5



#12 1-chlorooctadecane (SURR)

R.T.: 12.830 min
Delta R.T.: 0.003 min
Response: 3825417
Conc: 25.66 ug/ml