

Data Path : Z:\pestpcbsrv\HPCHEM1\FID\_C\Data\FC033125AL\  
 Data File : FC068461.D  
 Signal(s) : FID1A.ch  
 Acq On : 01 Apr 2025 01:08  
 Operator : YP/AJ  
 Sample : 20 PPM ALIPHATIC HC STD  
 Misc :  
 ALS Vial : 2 Sample Multiplier: 1

**Instrument :**  
 FID\_C  
**ClientSampleId :**  
 20 PPM ALIPHATIC HC STD

Integration File: autoint1.e  
 Quant Time: Apr 01 03:22:19 2025  
 Quant Method : Z:\pestpcbsrv\HPCHEM1\FID\_C\Method\Aliphatic EPH 032625.M  
 Quant Title : GC Extractables  
 QLast Update : Wed Mar 26 13:35:27 2025  
 Response via : Initial Calibration  
 Integrator: ChemStation

Volume Inj. : 1 ul  
 Signal Phase : Rxi-1ms  
 Signal Info : 20M x 0.18mm x 0.18um

Compound	R.T.	Response	Conc Units
-----			
System Monitoring Compounds			
9) S ortho-Terphenyl (SURR)	11.385	4087279	20.577 ug/ml
Spiked Amount	50.000	Recovery =	41.15%
12) S 1-chlorooctadecane (S...	12.827	3031524	20.336 ug/ml
Spiked Amount	50.000	Recovery =	40.67%
Target Compounds			
1) T n-Nonane (C9)	3.198	3362426	21.023 ug/ml
2) T n-Decane (C10)	4.252	3452973	21.301 ug/ml
3) T A~Naphthalene (C11.7)	5.817	3803795	21.530 ug/ml
4) T n-Dodecane (C12)	6.260	3502393	21.238 ug/ml
5) T A~2-methylnaphthalene...	6.869	3694133	21.718 ug/ml
6) T n-Tetradecane (C14)	8.047	3498796	21.264 ug/ml
7) T n-Hexadecane (C16)	9.643	3653091	21.257 ug/ml
8) T n-Octadecane (C18)	11.080	3691702	21.032 ug/ml
10) T n-Eicosane (C20)	12.386	3521992	20.565 ug/ml
11) T n-Heneicosane (C21)	12.997	3430938	20.454 ug/ml
13) T n-Docosane (C22)	13.583	3386199	20.072 ug/ml
14) T n-Tetracosane (C24)	14.683	3302105	19.281 ug/ml
15) T n-Hexacosane (C26)	15.701	3197032	18.995 ug/ml
16) T n-Octacosane (C28)	16.650	3117911	18.646 ug/ml
17) T n-Tricontane (C30)	17.535	3204933	18.382 ug/ml
18) T n-Dotriacontane (C32)	18.367	3146421	18.795 ug/ml
19) T n-Tetratriacontane (C34)	19.149	2659351	18.030 ug/ml
20) T n-Hexatriacontane (C36)	19.889	2234548	18.259 ug/ml
21) T n-Octatriacontane (C38)	20.599	2118203	19.725 ug/ml
22) T n-Tetracontane (C40)	21.447	1934741	19.741 ug/ml

(f)=RT Delta > 1/2 Window

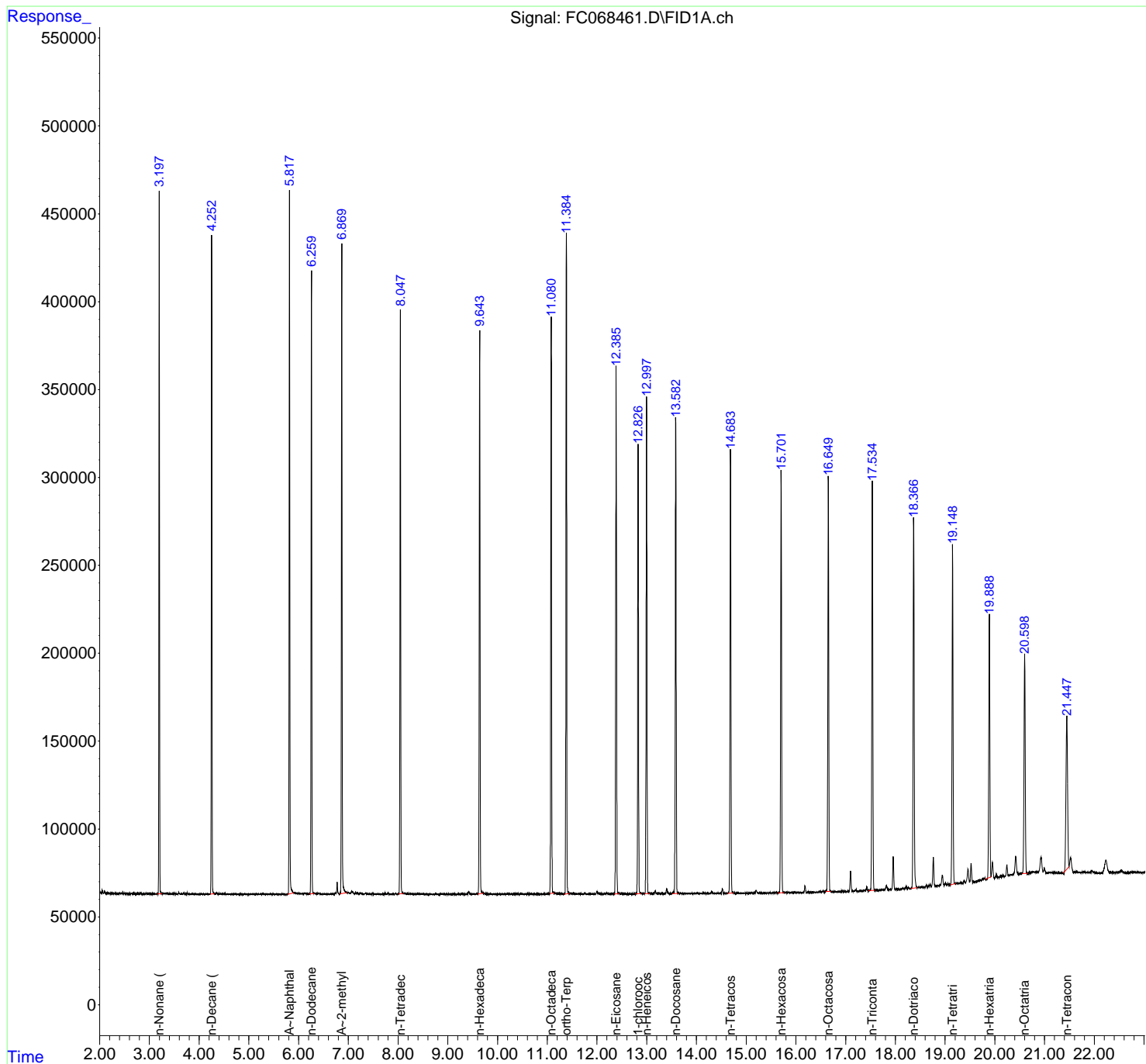
(m)=manual int.

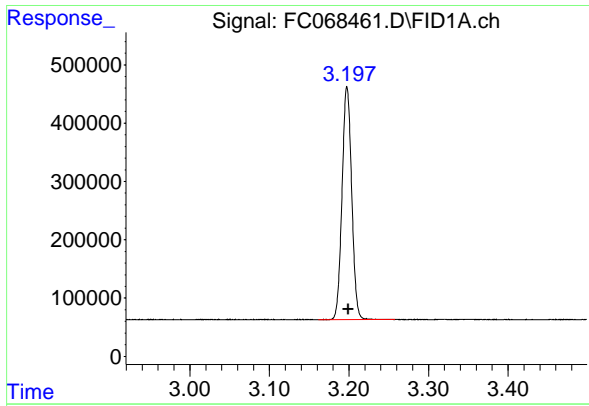
Data Path : Z:\pestpcbsrv\HPCHEM1\FID\_C\Data\FC033125AL\  
 Data File : FC068461.D  
 Signal(s) : FID1A.ch  
 Acq On : 01 Apr 2025 01:08  
 Operator : YP/AJ  
 Sample : 20 PPM ALIPHATIC HC STD  
 Misc :  
 ALS Vial : 2 Sample Multiplier: 1

Instrument :  
 FID\_C  
 ClientSampleId :  
 20 PPM ALIPHATIC HC STD

Integration File: autoint1.e  
 Quant Time: Apr 01 03:22:19 2025  
 Quant Method : Z:\pestpcbsrv\HPCHEM1\FID\_C\Method\Aliphatic EPH 032625.M  
 Quant Title : GC Extractables  
 QLast Update : Wed Mar 26 13:35:27 2025  
 Response via : Initial Calibration  
 Integrator: ChemStation

Volume Inj. : 1 ul  
 Signal Phase : Rxi-1ms  
 Signal Info : 20M x 0.18mm x 0.18um

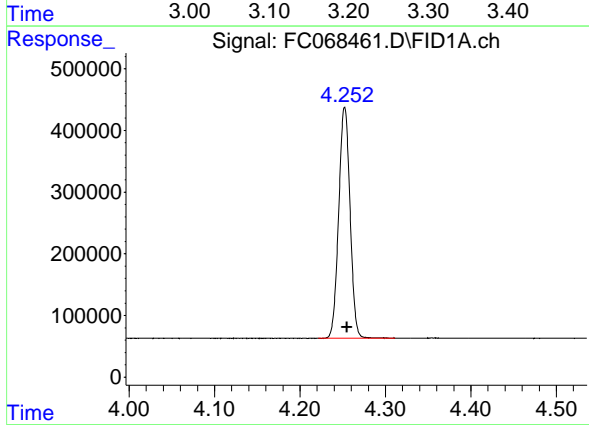




#1 n-Nonane (C9)

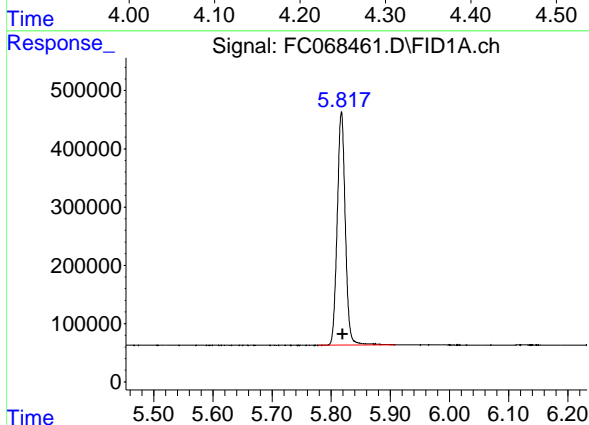
R.T.: 3.198 min  
Delta R.T.: -0.001 min  
Response: 3362426  
Conc: 21.02 ug/ml

Instrument : FID\_C  
ClientSampleId : 20 PPM ALIPHATIC HC STD



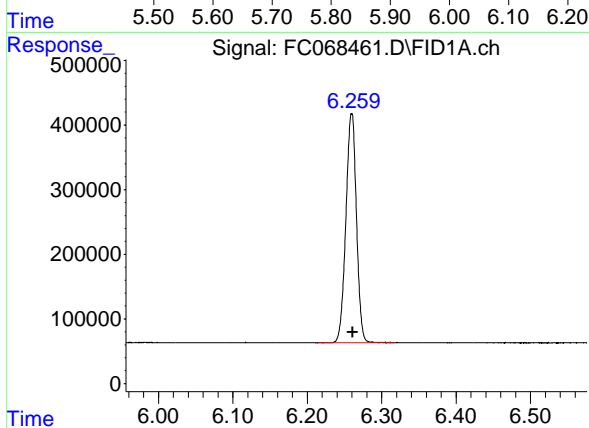
#2 n-Decane (C10)

R.T.: 4.252 min  
Delta R.T.: -0.002 min  
Response: 3452973  
Conc: 21.30 ug/ml



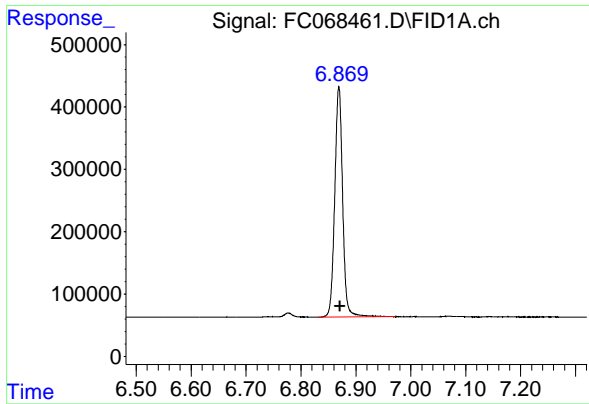
#3 A~Naphthalene (C11.7)

R.T.: 5.817 min  
Delta R.T.: -0.002 min  
Response: 3803795  
Conc: 21.53 ug/ml



#4 n-Dodecane (C12)

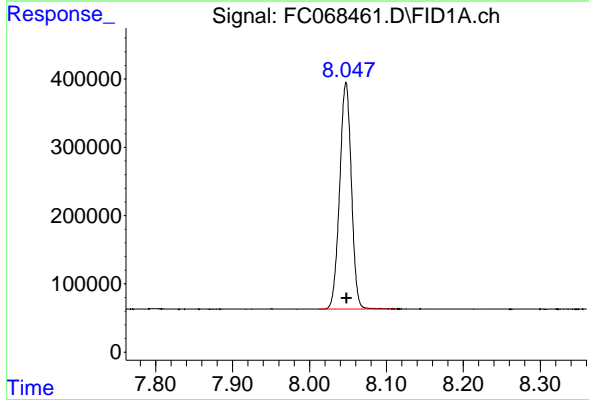
R.T.: 6.260 min  
Delta R.T.: -0.002 min  
Response: 3502393  
Conc: 21.24 ug/ml



#5 A~2-methylnaphthalene (C12.89)

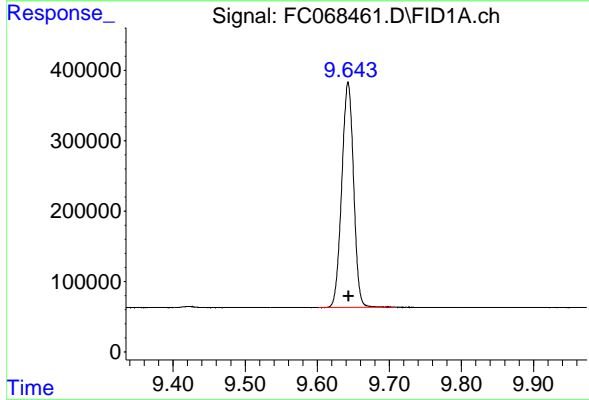
R.T.: 6.869 min  
 Delta R.T.: -0.002 min  
 Response: 3694133  
 Conc: 21.72 ug/ml

Instrument : FID\_C  
 ClientSampleId : 20 PPM ALIPHATIC HC STD



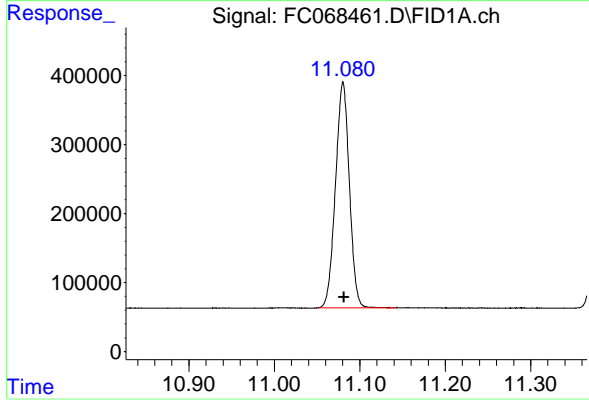
#6 n-Tetradecane (C14)

R.T.: 8.047 min  
 Delta R.T.: 0.000 min  
 Response: 3498796  
 Conc: 21.26 ug/ml



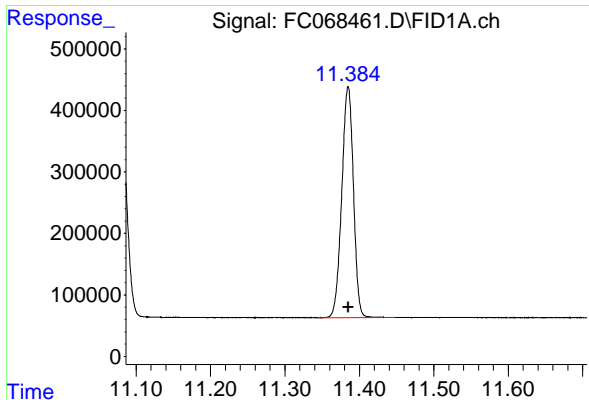
#7 n-Hexadecane (C16)

R.T.: 9.643 min  
 Delta R.T.: -0.001 min  
 Response: 3653091  
 Conc: 21.26 ug/ml



#8 n-Octadecane (C18)

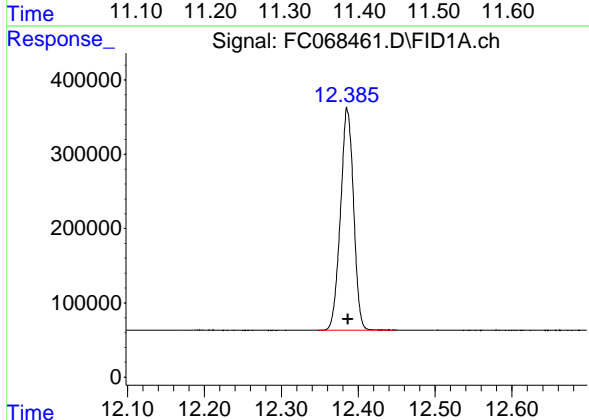
R.T.: 11.080 min  
 Delta R.T.: -0.001 min  
 Response: 3691702  
 Conc: 21.03 ug/ml



#9 ortho-Terphenyl (SURR)

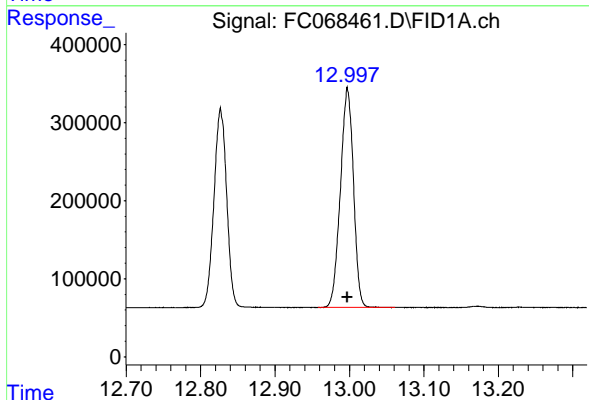
R.T.: 11.385 min  
 Delta R.T.: 0.000 min  
 Response: 4087279  
 Conc: 20.58 ug/ml

Instrument : FID\_C  
 ClientSampleId : 20 PPM ALIPHATIC HC STD



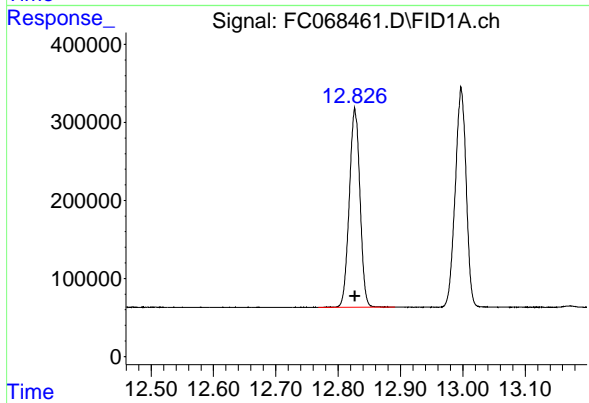
#10 n-Eicosane (C20)

R.T.: 12.386 min  
 Delta R.T.: 0.000 min  
 Response: 3521992  
 Conc: 20.56 ug/ml



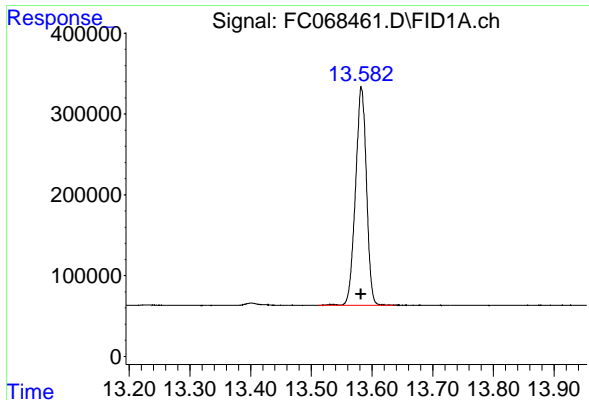
#11 n-Heneicosane (C21)

R.T.: 12.997 min  
 Delta R.T.: 0.000 min  
 Response: 3430938  
 Conc: 20.45 ug/ml



#12 1-chlorooctadecane (SURR)

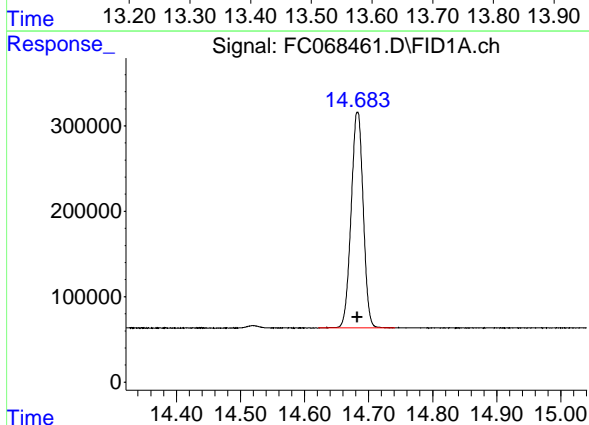
R.T.: 12.827 min  
 Delta R.T.: 0.000 min  
 Response: 3031524  
 Conc: 20.34 ug/ml



#13 n-Docosane (C22)

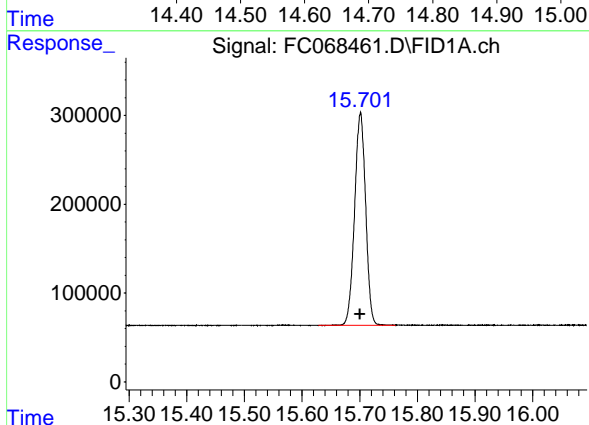
R.T.: 13.583 min  
 Delta R.T.: 0.000 min  
 Response: 3386199  
 Conc: 20.07 ug/ml

Instrument : FID\_C  
 ClientSampleId : 20 PPM ALIPHATIC HC STD



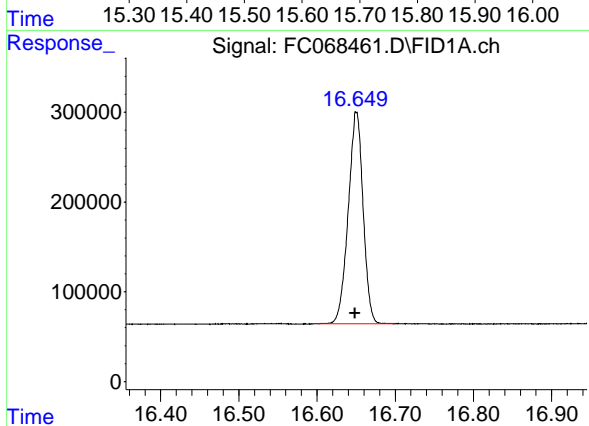
#14 n-Tetracosane (C24)

R.T.: 14.683 min  
 Delta R.T.: 0.000 min  
 Response: 3302105  
 Conc: 19.28 ug/ml



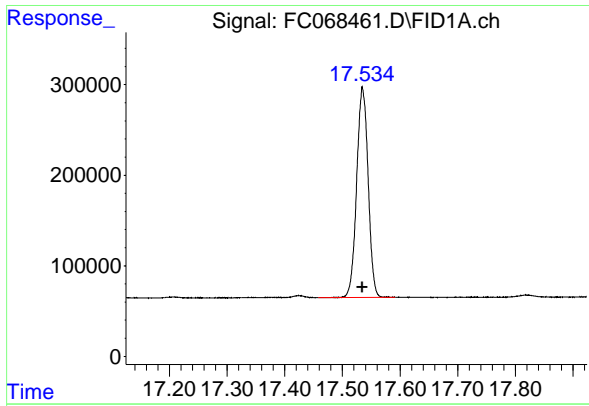
#15 n-Hexacosane (C26)

R.T.: 15.701 min  
 Delta R.T.: 0.000 min  
 Response: 3197032  
 Conc: 19.00 ug/ml



#16 n-Octacosane (C28)

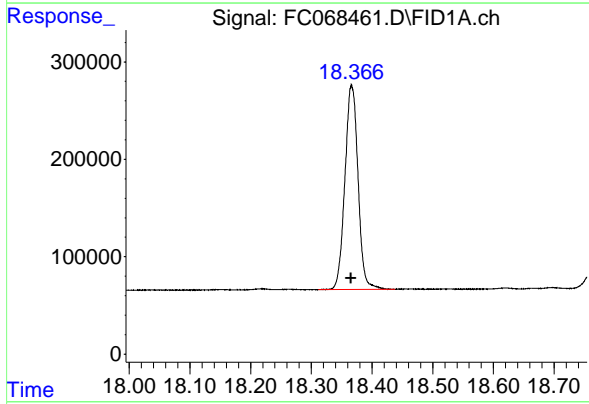
R.T.: 16.650 min  
 Delta R.T.: 0.002 min  
 Response: 3117911  
 Conc: 18.65 ug/ml



#17 n-Tricontane (C30)

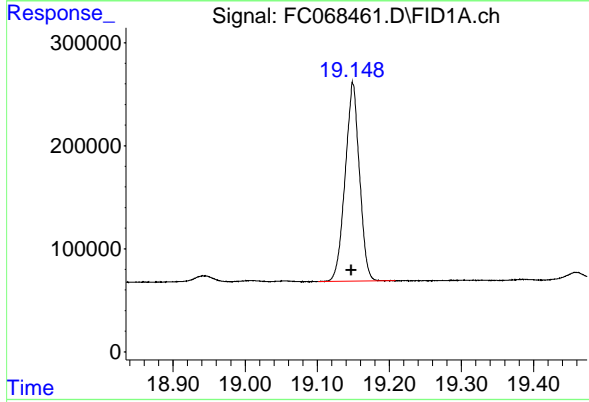
R.T.: 17.535 min  
 Delta R.T.: 0.000 min  
 Response: 3204933  
 Conc: 18.38 ug/ml

Instrument :  
 FID\_C  
 ClientSampleId :  
 20 PPM ALIPHATIC HC STD



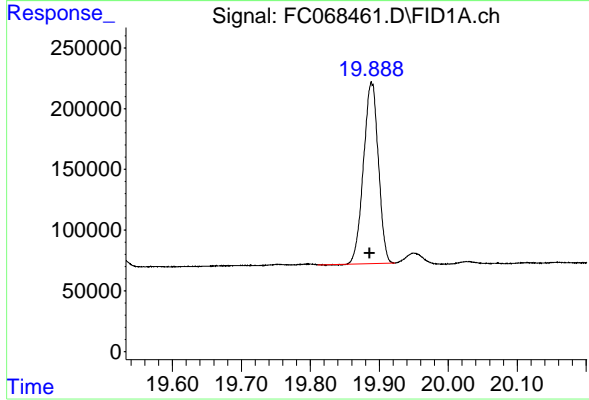
#18 n-Dotriacontane (C32)

R.T.: 18.367 min  
 Delta R.T.: 0.001 min  
 Response: 3146421  
 Conc: 18.80 ug/ml



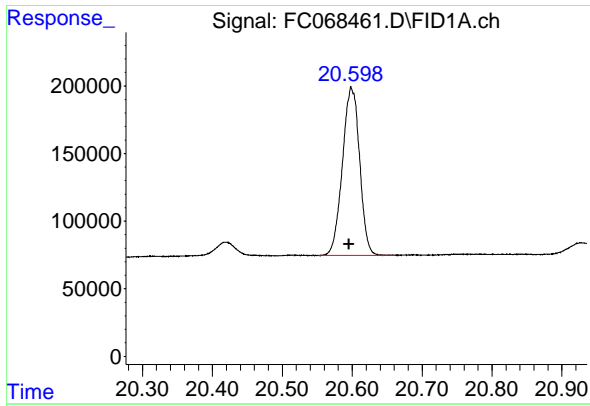
#19 n-Tetraatriacontane (C34)

R.T.: 19.149 min  
 Delta R.T.: 0.002 min  
 Response: 2659351  
 Conc: 18.03 ug/ml



#20 n-Hexatriacontane (C36)

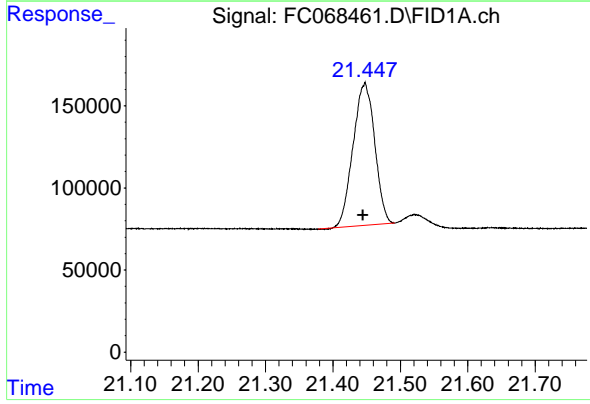
R.T.: 19.889 min  
 Delta R.T.: 0.003 min  
 Response: 2234548  
 Conc: 18.26 ug/ml



#21 n-Octatriacontane (C38)

R.T.: 20.599 min  
 Delta R.T.: 0.003 min  
 Response: 2118203  
 Conc: 19.73 ug/ml

Instrument :  
 FID\_C  
 ClientSampleId :  
 20 PPM ALIPHATIC HC STD



#22 n-Tetracontane (C40)

R.T.: 21.447 min  
 Delta R.T.: 0.002 min  
 Response: 1934741  
 Conc: 19.74 ug/ml