

Data Path : Z:\pestpcbsrv\HPCHEM1\FID_C\Data\FC040225AL\
 Data File : FC068489.D
 Signal(s) : FID1A.ch
 Acq On : 02 Apr 2025 17:09
 Operator : YP/AJ
 Sample : 20 PPM ALIPHATIC HC STD3
 Misc :
 ALS Vial : 13 Sample Multiplier: 1

Instrument :
 FID_C
 ClientSampleId :
 20 PPM ALIPHATIC HC STD3

Integration File: autoint1.e
 Quant Time: Apr 02 18:38:11 2025
 Quant Method : Z:\pestpcbsrv\HPCHEM1\FID_C\Method\Aliphatic EPH 040225.M
 Quant Title : GC Extractables
 QLast Update : Wed Apr 02 18:36:21 2025
 Response via : Initial Calibration
 Integrator: ChemStation

Volume Inj. : 1 ul
 Signal Phase : Rxi-1ms
 Signal Info : 20M x 0.18mm x 0.18um

Compound	R.T.	Response	Conc Units

System Monitoring Compounds			
9) S ortho-Terphenyl (SURR)	11.716	2591844	20.000 ug/ml
Spiked Amount	50.000	Recovery	= 40.00%
12) S 1-chlorooctadecane (S...	13.314	2141005	20.000 ug/ml
Spiked Amount	50.000	Recovery	= 40.00%
Target Compounds			
1) T n-Nonane (C9)	3.451	2237116	20.000 ug/ml
2) T n-Decane (C10)	4.526	2274882	20.000 ug/ml
3) T A~Naphthalene (C11.7)	6.123	2519456	20.000 ug/ml
4) T n-Dodecane (C12)	6.551	2270642	20.000 ug/ml
5) T A~2-methylnaphthalene...	7.180	2409709	20.000 ug/ml
6) T n-Tetradecane (C14)	8.347	2232688	20.000 ug/ml
7) T n-Hexadecane (C16)	9.950	2288357	20.000 ug/ml
8) T n-Octadecane (C18)	11.391	2288117	20.000 ug/ml
10) T n-Eicosane (C20)	12.702	2185592	20.000 ug/ml
11) T n-Heneicosane (C21)	13.148	1844920	20.000 ug/ml
13) T n-Docosane (C22)	13.901	2129148	20.000 ug/ml
14) T n-Tetracosane (C24)	15.004	2127660	20.000 ug/ml
15) T n-Hexacosane (C26)	16.025	2075088	20.000 ug/ml
16) T n-Octacosane (C28)	16.975	2013228	20.000 ug/ml
17) T n-Tricontane (C30)	17.863	2030134	20.000 ug/ml
18) T n-Dotriacontane (C32)	18.695	1933414	20.000 ug/ml
19) T n-Tetratriacontane (C34)	19.478	1739064	20.000 ug/ml
20) T n-Hexatriacontane (C36)	20.218	1493355	20.000 ug/ml
21) T n-Octatriacontane (C38)	20.990	1273221	20.000 ug/ml
22) T n-Tetracontane (C40)	21.965	936374	20.000 ug/ml

(f)=RT Delta > 1/2 Window

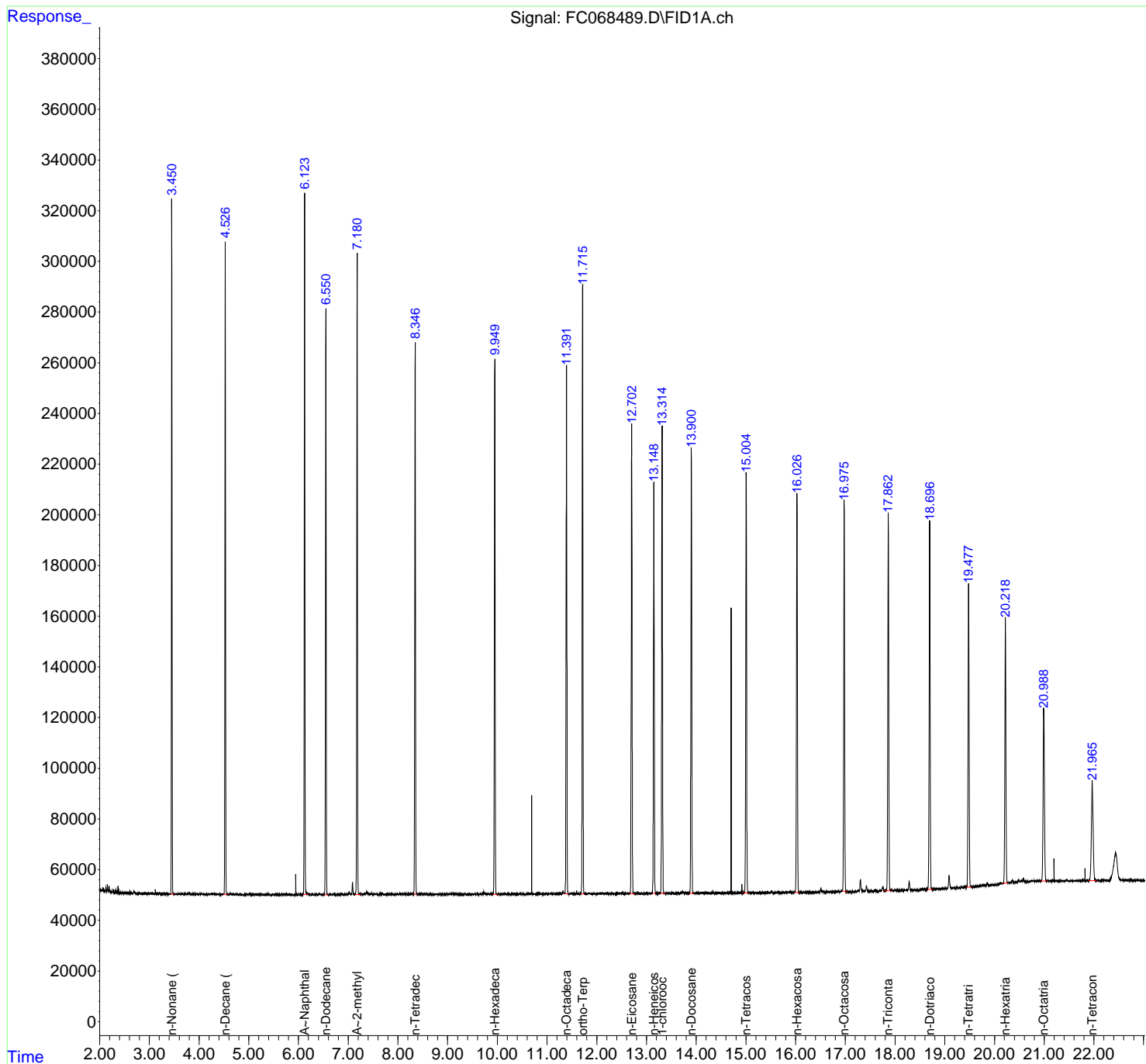
(m)=manual int.

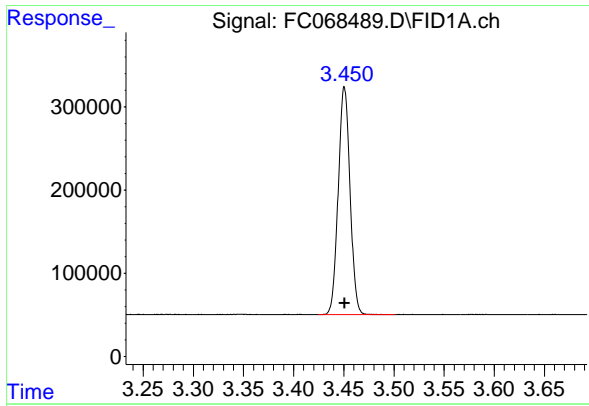
Data Path : Z:\pestpcbsrv\HPCHEM1\FID_C\Data\FC040225AL\
 Data File : FC068489.D
 Signal(s) : FID1A.ch
 Acq On : 02 Apr 2025 17:09
 Operator : YP/AJ
 Sample : 20 PPM ALIPHATIC HC STD3
 Misc :
 ALS Vial : 13 Sample Multiplier: 1

Instrument :
 FID_C
 ClientSampleId :
 20 PPM ALIPHATIC HC STD3

Integration File: autoint1.e
 Quant Time: Apr 02 18:38:11 2025
 Quant Method : Z:\pestpcbsrv\HPCHEM1\FID_C\Method\Aliphatic EPH 040225.M
 Quant Title : GC Extractables
 QLast Update : Wed Apr 02 18:36:21 2025
 Response via : Initial Calibration
 Integrator: ChemStation

Volume Inj. : 1 ul
 Signal Phase : Rxi-1ms
 Signal Info : 20M x 0.18mm x 0.18um

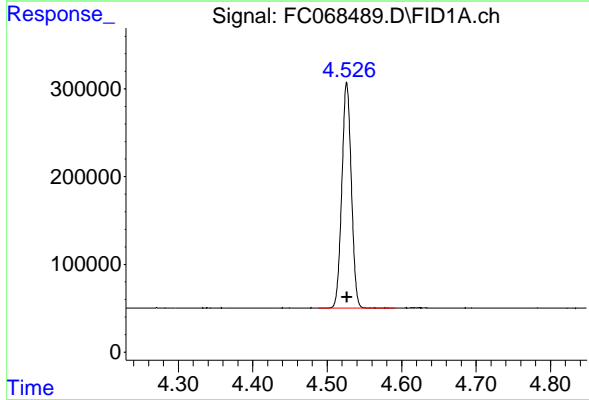




#1 n-Nonane (C9)

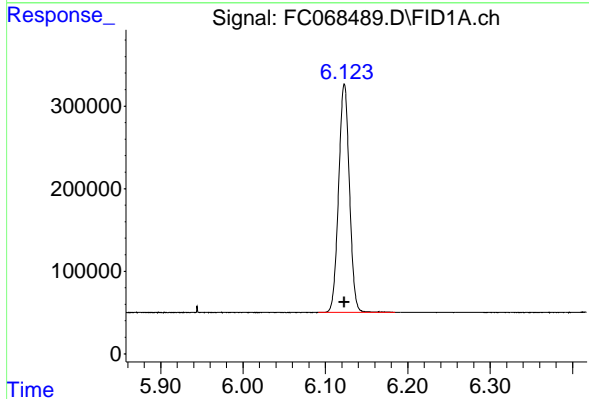
R.T.: 3.451 min
Delta R.T.: 0.000 min
Response: 2237116
Conc: 20.00 ug/ml

Instrument :
FID_C
ClientSampleId :
20 PPM ALIPHATIC HC STD3



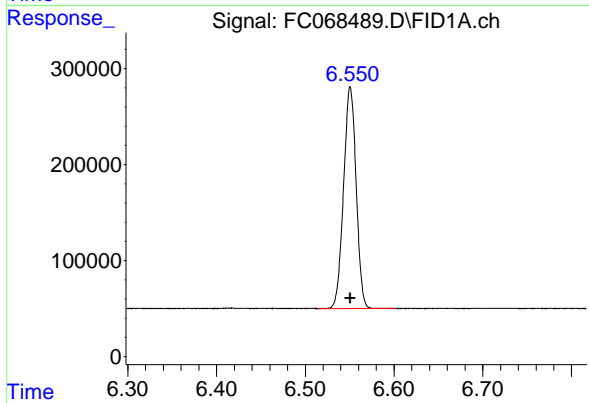
#2 n-Decane (C10)

R.T.: 4.526 min
Delta R.T.: 0.000 min
Response: 2274882
Conc: 20.00 ug/ml



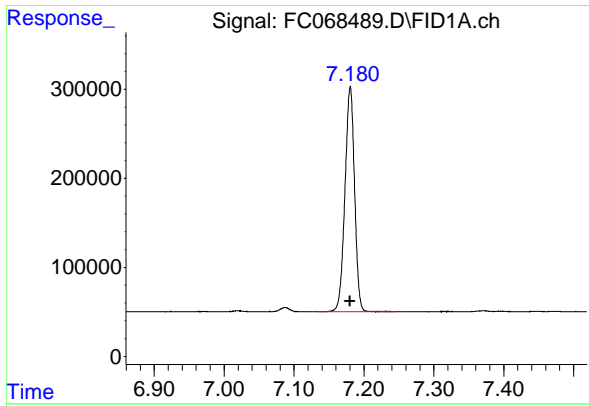
#3 A~Naphthalene (C11.7)

R.T.: 6.123 min
Delta R.T.: 0.000 min
Response: 2519456
Conc: 20.00 ug/ml



#4 n-Dodecane (C12)

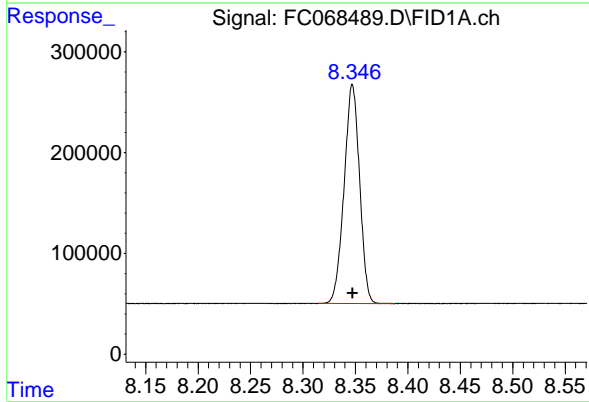
R.T.: 6.551 min
Delta R.T.: 0.000 min
Response: 2270642
Conc: 20.00 ug/ml



#5 A~2-methylnaphthalene (C12.89)

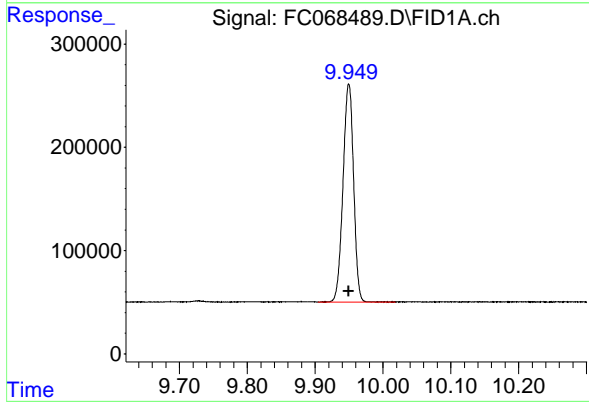
R.T.: 7.180 min
 Delta R.T.: 0.000 min
 Response: 2409709
 Conc: 20.00 ug/ml

Instrument :
 FID_C
 ClientSampleId :
 20 PPM ALIPHATIC HC STD3



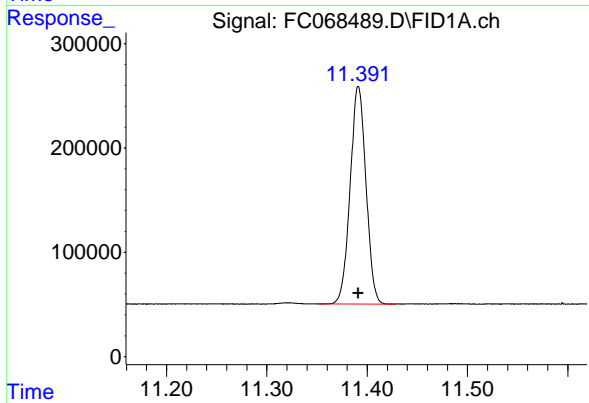
#6 n-Tetradecane (C14)

R.T.: 8.347 min
 Delta R.T.: 0.000 min
 Response: 2232688
 Conc: 20.00 ug/ml



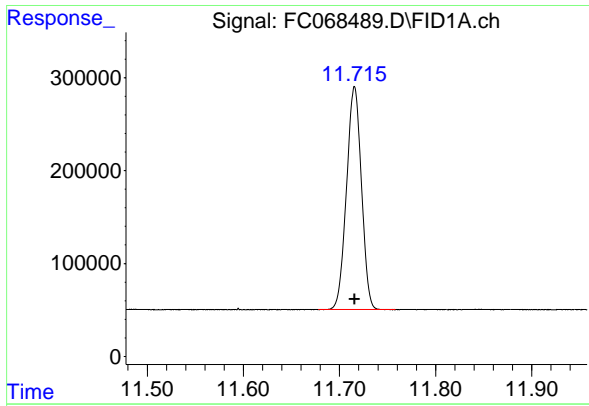
#7 n-Hexadecane (C16)

R.T.: 9.950 min
 Delta R.T.: 0.000 min
 Response: 2288357
 Conc: 20.00 ug/ml



#8 n-Octadecane (C18)

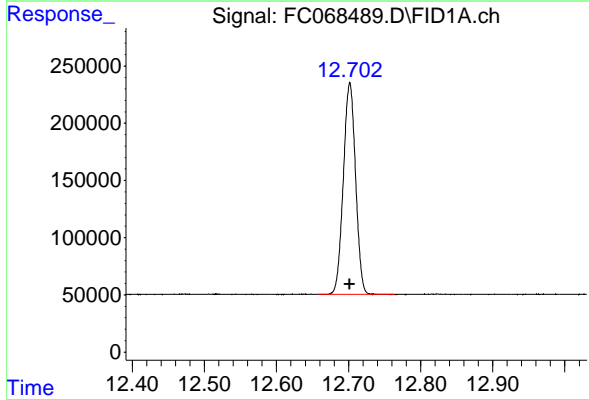
R.T.: 11.391 min
 Delta R.T.: 0.000 min
 Response: 2288117
 Conc: 20.00 ug/ml



#9 ortho-Terphenyl (SURR)

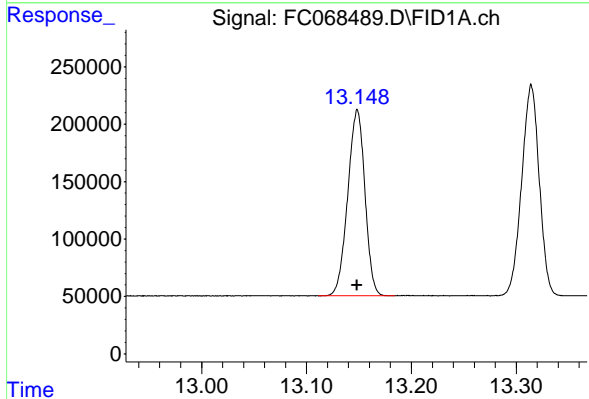
R.T.: 11.716 min
 Delta R.T.: 0.000 min
 Response: 2591844
 Conc: 20.00 ug/ml

Instrument : FID_C
 ClientSampleId : 20 PPM ALIPHATIC HC STD3



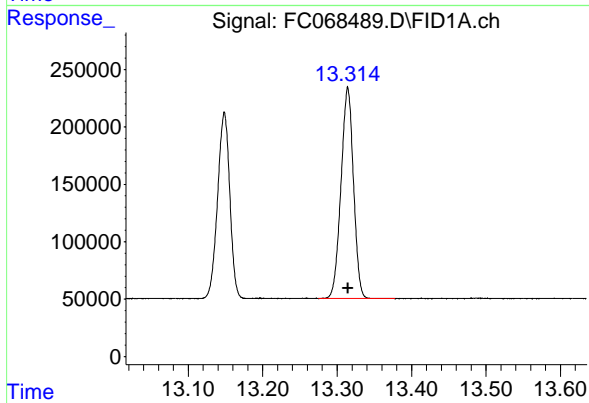
#10 n-Eicosane (C20)

R.T.: 12.702 min
 Delta R.T.: 0.000 min
 Response: 2185592
 Conc: 20.00 ug/ml



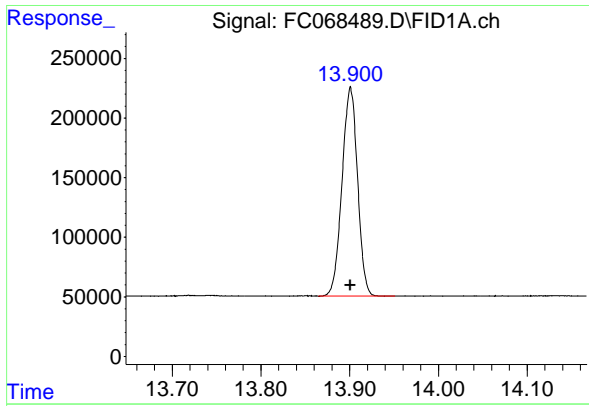
#11 n-Heneicosane (C21)

R.T.: 13.148 min
 Delta R.T.: 0.000 min
 Response: 1844920
 Conc: 20.00 ug/ml



#12 1-chlorooctadecane (SURR)

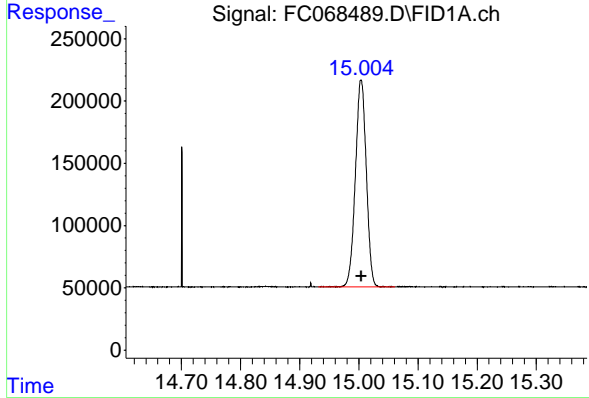
R.T.: 13.314 min
 Delta R.T.: 0.000 min
 Response: 2141005
 Conc: 20.00 ug/ml



#13 n-Docosane (C22)

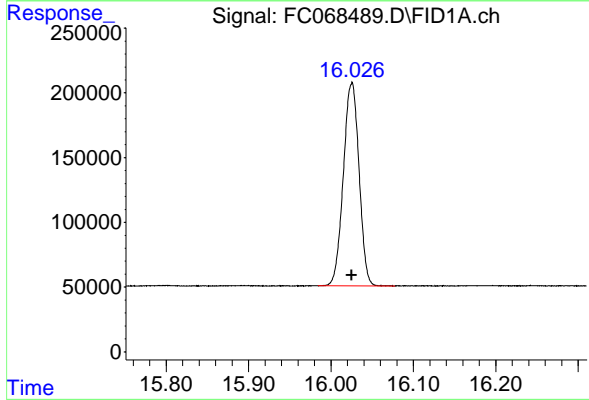
R.T.: 13.901 min
Delta R.T.: 0.000 min
Response: 2129148
Conc: 20.00 ug/ml

Instrument : FID_C
ClientSampleId : 20 PPM ALIPHATIC HC STD3



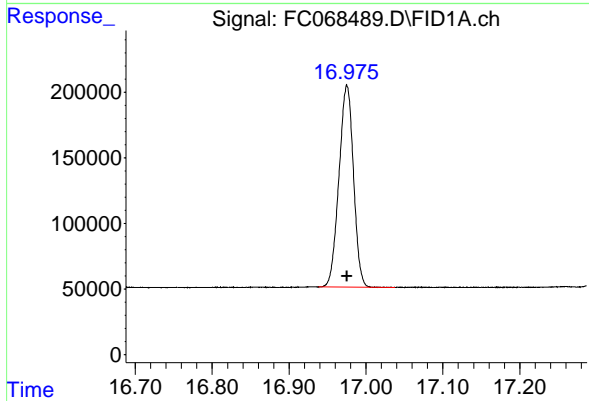
#14 n-Tetracosane (C24)

R.T.: 15.004 min
Delta R.T.: 0.000 min
Response: 2127660
Conc: 20.00 ug/ml



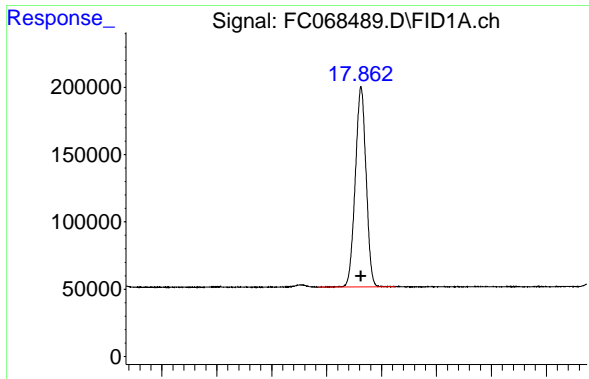
#15 n-Hexacosane (C26)

R.T.: 16.025 min
Delta R.T.: 0.000 min
Response: 2075088
Conc: 20.00 ug/ml



#16 n-Octacosane (C28)

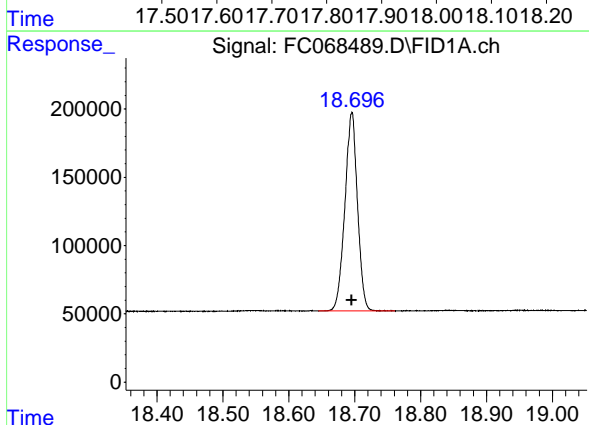
R.T.: 16.975 min
Delta R.T.: 0.000 min
Response: 2013228
Conc: 20.00 ug/ml



#17 n-Tricontane (C30)

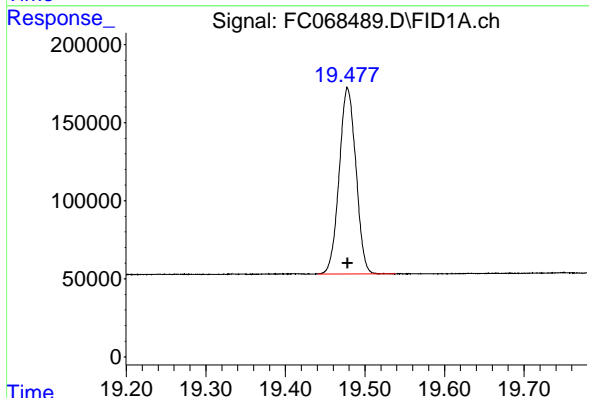
R.T.: 17.863 min
 Delta R.T.: 0.000 min
 Response: 2030134
 Conc: 20.00 ug/ml

Instrument :
 FID_C
 ClientSampleId :
 20 PPM ALIPHATIC HC STD3



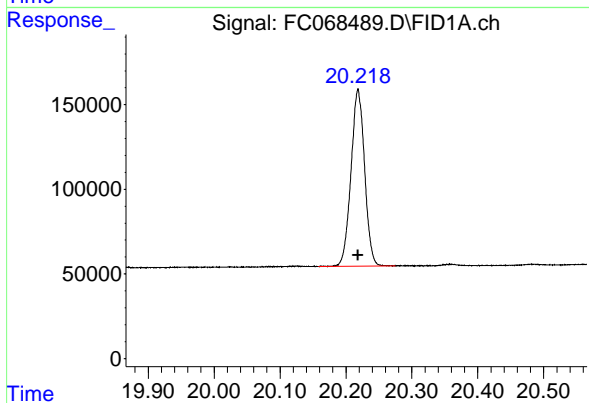
#18 n-Dotriacontane (C32)

R.T.: 18.695 min
 Delta R.T.: 0.000 min
 Response: 1933414
 Conc: 20.00 ug/ml



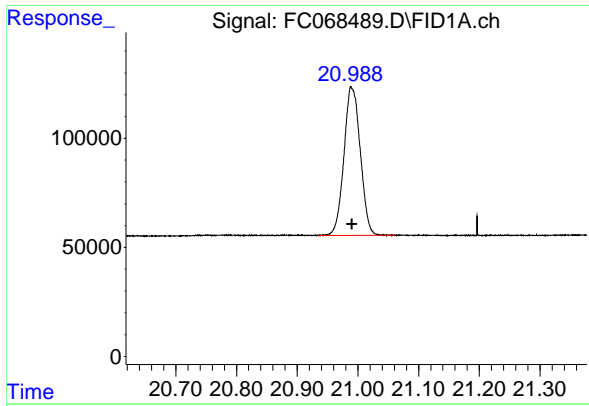
#19 n-Tetracontane (C34)

R.T.: 19.478 min
 Delta R.T.: 0.000 min
 Response: 1739064
 Conc: 20.00 ug/ml



#20 n-Hexatriacontane (C36)

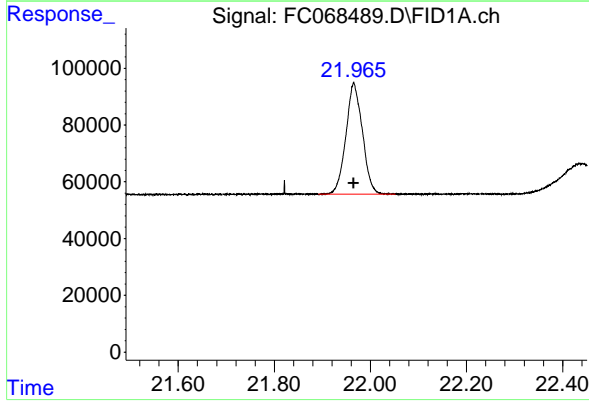
R.T.: 20.218 min
 Delta R.T.: 0.000 min
 Response: 1493355
 Conc: 20.00 ug/ml



#21 n-Octatriacontane (C38)

R.T.: 20.990 min
Delta R.T.: 0.000 min
Response: 1273221
Conc: 20.00 ug/ml

Instrument :
FID_C
ClientSampleId :
20 PPM ALIPHATIC HC STD3



#22 n-Tetracontane (C40)

R.T.: 21.965 min
Delta R.T.: 0.000 min
Response: 936374
Conc: 20.00 ug/ml