

Data Path : Z:\pestpcbsrv\HPCHEM1\FID\_C\Data\FC040419AL\  
Data File : FC040347.D  
Signal(s) : FID1A.CH  
Acq On : 05 Apr 2019 7:28  
Operator : AJ\SJ  
Sample : K2257-13  
Misc :  
ALS Vial : 33 Sample Multiplier: 1

Integration File: autoint1.e  
Quant Time: Apr 05 08:20:00 2019  
Quant Method : Z:\pestpcbsrv\HPCHEM1\FID\_C\Method\Alaphatic EPH 032319.M  
Quant Title : GC Extractables  
QLast Update : Sat Mar 23 13:38:33 2019  
Response via : Initial Calibration  
Integrator: ChemStation 6890 Scale Mode: Large solvent peaks clipped

Volume Inj. : 1 ul  
Signal Phase : Rxi-1ms  
Signal Info : 20M x 0.18mm x 0.18um

Compound	R.T.	Response	Conc Units
-----			
System Monitoring Compounds			
12) S 1-chlorooctadecane (S...	12.459	4082717	41.331 ug/ml
Spiked Amount	50.000	Recovery	= 82.66%
Target Compounds			
-----			

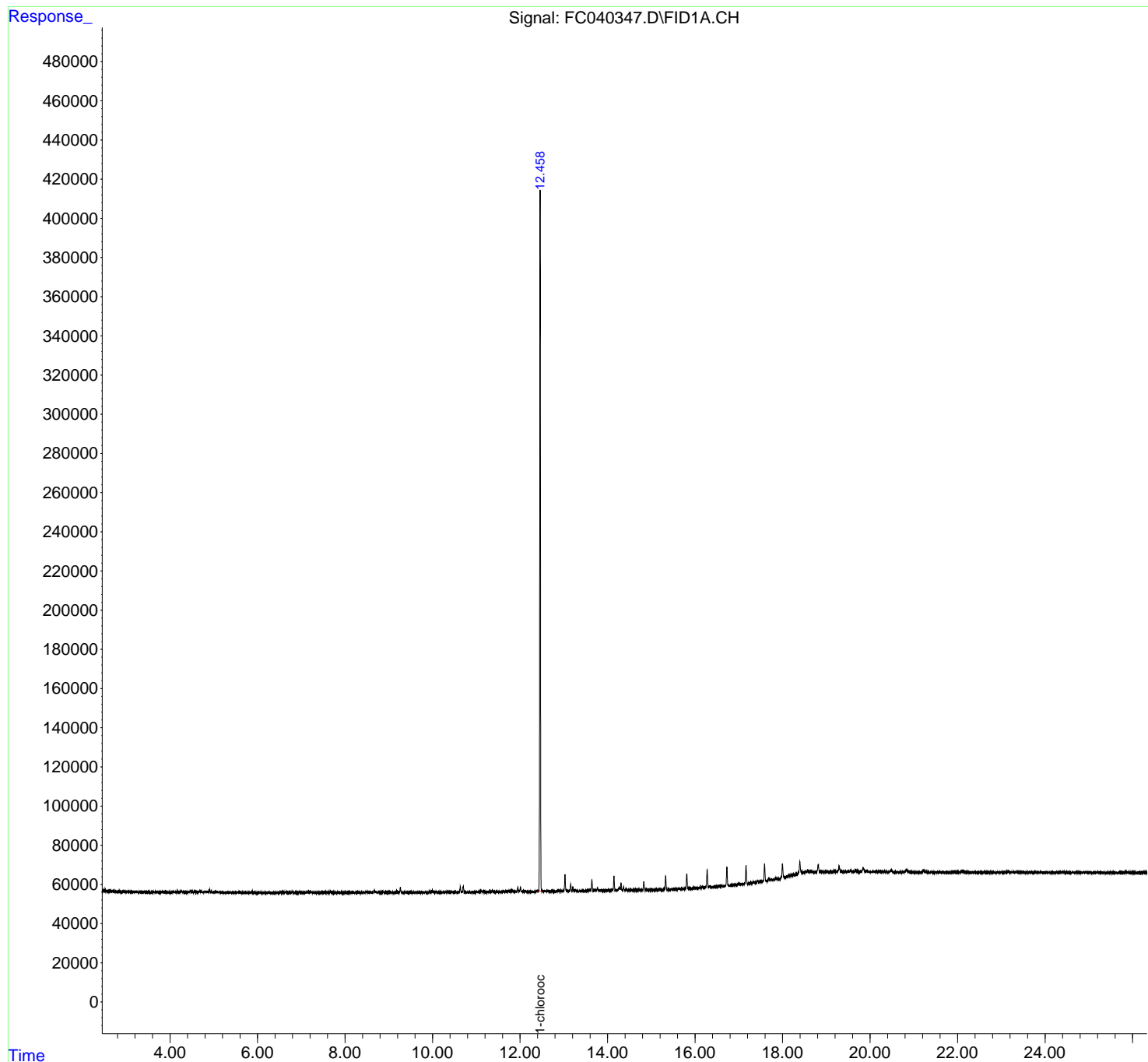
(f)=RT Delta > 1/2 Window

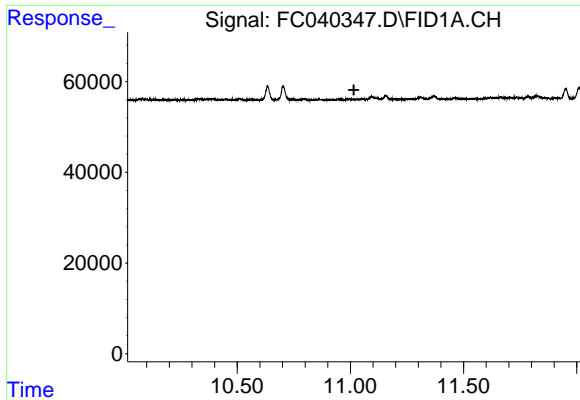
(m)=manual int.

Data Path : Z:\pestpcbsrv\HPCHEM1\FID\_C\Data\FC040419AL\  
Data File : FC040347.D  
Signal(s) : FID1A.CH  
Acq On : 05 Apr 2019 7:28  
Operator : AJ\SJ  
Sample : K2257-13  
Misc :  
ALS Vial : 33 Sample Multiplier: 1

Integration File: autoint1.e  
Quant Time: Apr 05 08:20:00 2019  
Quant Method : Z:\pestpcbsrv\HPCHEM1\FID\_C\Method\Alaphatic EPH 032319.M  
Quant Title : GC Extractables  
QLast Update : Sat Mar 23 13:38:33 2019  
Response via : Initial Calibration  
Integrator: ChemStation 6890 Scale Mode: Large solvent peaks clipped

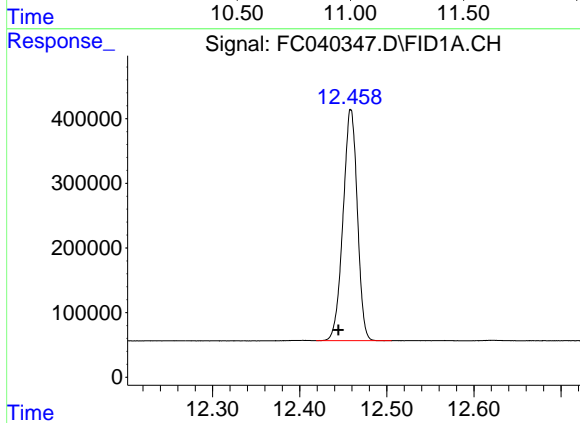
Volume Inj. : 1 ul  
Signal Phase : Rxi-1ms  
Signal Info : 20M x 0.18mm x 0.18um





#9 ortho-Terphenyl (SURR)

R.T.: 0.000 min  
Exp R.T. : 11.016 min  
Response: 0  
Conc: N.D.



#12 1-chlorooctadecane (SURR)

R.T.: 12.459 min  
Delta R.T.: 0.014 min  
Response: 4082717  
Conc: 41.33 ug/ml