

Data Path : Z:\pestpcbsrv\HPCHEM1\FID_C\Data\FC040519AL\
Data File : FC040407.D
Signal(s) : FID1A.CH
Acq On : 06 Apr 2019 22:37
Operator : AJ\SJ
Sample : I.BLK
Misc :
ALS Vial : 1 Sample Multiplier: 1

Integration File: autoint1.e
Quant Time: Apr 08 01:48:32 2019
Quant Method : Z:\pestpcbsrv\HPCHEM1\FID_C\Method\Alaphatic EPH 032319.M
Quant Title : GC Extractables
QLast Update : Sat Mar 23 13:38:33 2019
Response via : Initial Calibration
Integrator: ChemStation 6890 Scale Mode: Large solvent peaks clipped

Volume Inj. : 1 ul
Signal Phase : Rxi-1ms
Signal Info : 20M x 0.18mm x 0.18um

Compound	R.T.	Response	Conc Units

System Monitoring Compounds			
Target Compounds			

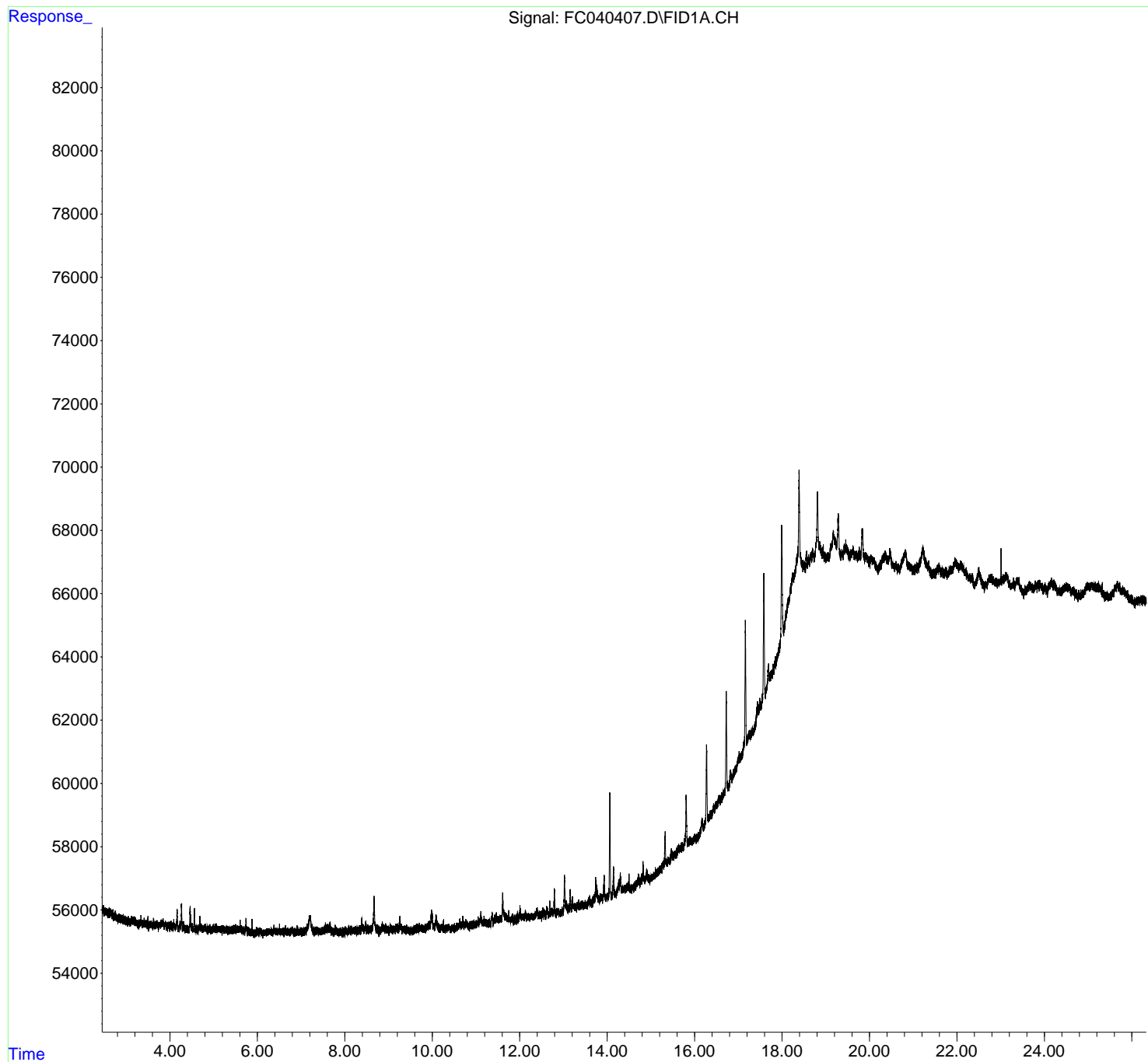
(f)=RT Delta > 1/2 Window

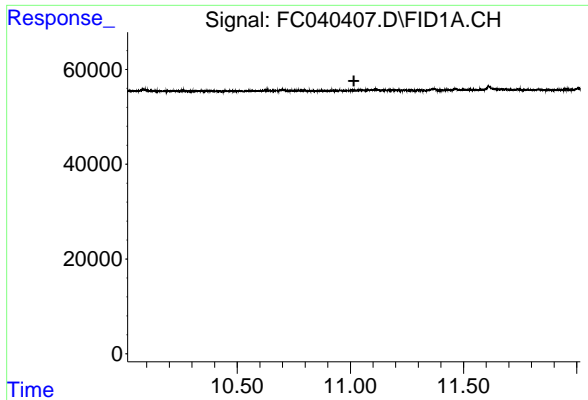
(m)=manual int.

Data Path : Z:\pestpcbsrv\HPCHEM1\FID_C\Data\FC040519AL\
Data File : FC040407.D
Signal(s) : FID1A.CH
Acq On : 06 Apr 2019 22:37
Operator : AJ\SJ
Sample : I.BLK
Misc :
ALS Vial : 1 Sample Multiplier: 1

Integration File: autoint1.e
Quant Time: Apr 08 01:48:32 2019
Quant Method : Z:\pestpcbsrv\HPCHEM1\FID_C\Method\Alaphatic EPH 032319.M
Quant Title : GC Extractables
QLast Update : Sat Mar 23 13:38:33 2019
Response via : Initial Calibration
Integrator: ChemStation 6890 Scale Mode: Large solvent peaks clipped

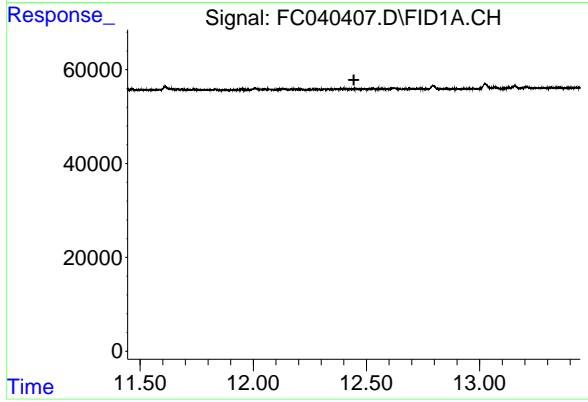
Volume Inj. : 1 ul
Signal Phase : Rxi-1ms
Signal Info : 20M x 0.18mm x 0.18um





#9 ortho-Terphenyl (SURR)

R.T.: 0.000 min
Exp R.T. : 11.016 min
Response: 0
Conc: N.D.



#12 1-chlorooctadecane (SURR)

R.T.: 0.000 min
Exp R.T. : 12.445 min
Response: 0
Conc: N.D.