

Data Path : Z:\pestpcbsrv\HPCHEM1\FID\_C\Data\FC040622AL\  
 Data File : FC059085.D  
 Signal(s) : FID1A.CH  
 Acq On : 06 Apr 2022 17:26  
 Operator : UA/NP  
 Sample : N2252-02DL 5X  
 Misc :  
 ALS Vial : 32 Sample Multiplier: 1

Instrument :  
 FID\_C  
 ClientSampleId :

Integration File: autoint1.e  
 Quant Time: Apr 07 01:58:28 2022  
 Quant Method : Z:\pestpcbsrv\HPCHEM1\FID\_C\Method\Aliphatic EPH 032522.M  
 Quant Title : GC Extractables  
 QLast Update : Fri Mar 25 23:18:46 2022  
 Response via : Initial Calibration  
 Integrator: ChemStation 6890 Scale Mode: Large solvent peaks clipped

Volume Inj. : 1 ul  
 Signal Phase : Rxi-1ms  
 Signal Info : 20M x 0.18mm x 0.18um

Compound	R.T.	Response	Conc Units
-----			
System Monitoring Compounds			
9) S ortho-Terphenyl (SURR)	11.100	739159	5.130 ug/ml
Spiked Amount	50.000	Recovery =	10.26%
12) S 1-chlorooctadecane (S...	12.548	577900	5.155 ug/ml
Spiked Amount	50.000	Recovery =	10.31%

Target Compounds

(f)=RT Delta > 1/2 Window

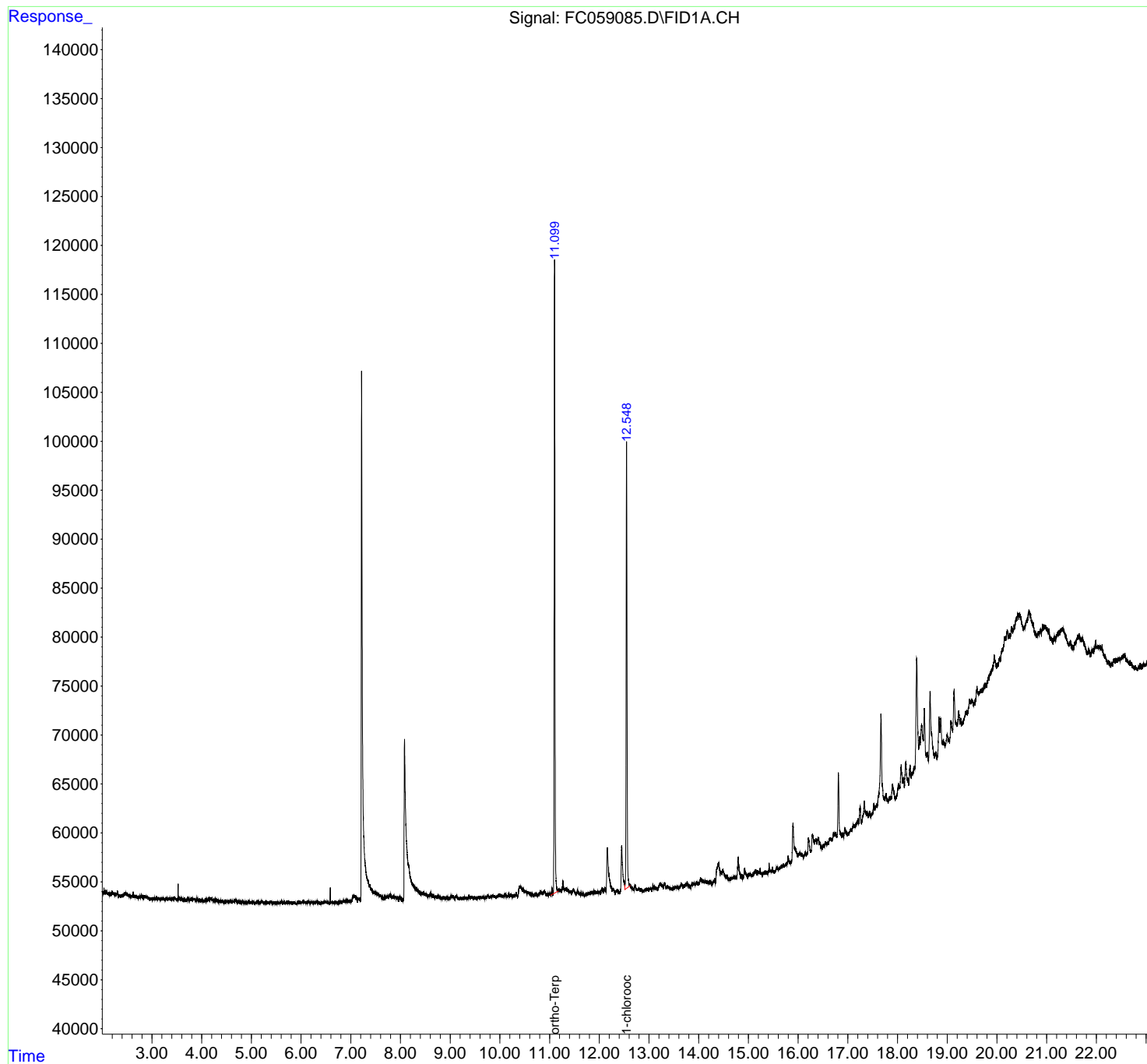
(m)=manual int.

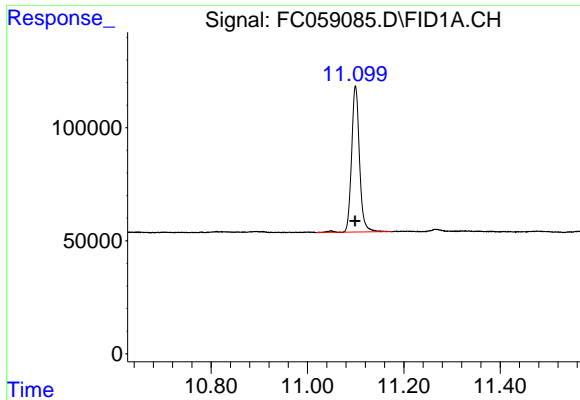
Data Path : Z:\pestpcbsrv\HPCHEM1\FID\_C\Data\FC040622AL\  
Data File : FC059085.D  
Signal(s) : FID1A.CH  
Acq On : 06 Apr 2022 17:26  
Operator : UA/NP  
Sample : N2252-02DL 5X  
Misc :  
ALS Vial : 32 Sample Multiplier: 1

Instrument :  
FID\_C  
ClientSampleId :

Integration File: autoint1.e  
Quant Time: Apr 07 01:58:28 2022  
Quant Method : Z:\pestpcbsrv\HPCHEM1\FID\_C\Method\Aliphatic EPH 032522.M  
Quant Title : GC Extractables  
QLast Update : Fri Mar 25 23:18:46 2022  
Response via : Initial Calibration  
Integrator: ChemStation 6890 Scale Mode: Large solvent peaks clipped

Volume Inj. : 1 ul  
Signal Phase : Rxi-1ms  
Signal Info : 20M x 0.18mm x 0.18um

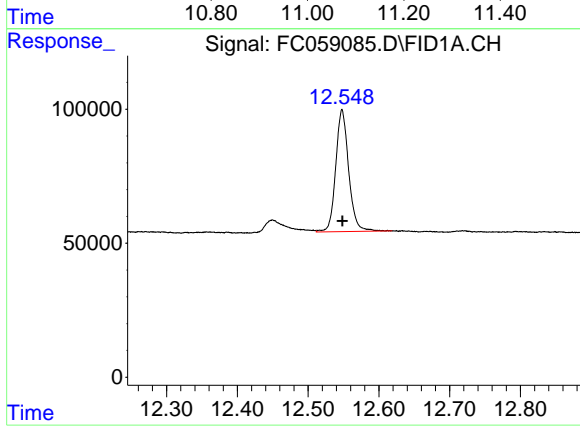




#9 ortho-Terphenyl (SURR)

R.T.: 11.100 min  
Delta R.T.: 0.001 min  
Response: 739159  
Conc: 5.13 ug/ml

Instrument :  
FID\_C  
ClientSampleId :



#12 1-chlorooctadecane (SURR)

R.T.: 12.548 min  
Delta R.T.: 0.000 min  
Response: 577900  
Conc: 5.16 ug/ml