

Data Path : Z:\pestpcbsrv\HPCHEM1\FID_C\Data\FC040622AL\
 Data File : FC059091.D
 Signal(s) : FID1A.CH
 Acq On : 06 Apr 2022 21:23
 Operator : UA/NP
 Sample : N2276-05
 Misc :
 ALS Vial : 8 Sample Multiplier: 1

Instrument :
 FID_C
 ClientSampleId :
 3

Integration File: sample.E
 Quant Time: Apr 07 01:59:34 2022
 Quant Method : Z:\pestpcbsrv\HPCHEM1\FID_C\Method\Aliphatic EPH 032522.M
 Quant Title : GC Extractables
 QLast Update : Fri Mar 25 23:18:46 2022
 Response via : Initial Calibration
 Integrator: ChemStation 6890 Scale Mode: Large solvent peaks clipped

Volume Inj. : 1 ul
 Signal Phase : Rxi-1ms
 Signal Info : 20M x 0.18mm x 0.18um

Compound	R.T.	Response	Conc Units

System Monitoring Compounds			
9) S ortho-Terphenyl (SURR)	11.103	6029558	41.848 ug/ml
Spiked Amount	50.000	Recovery	= 83.70%
12) S 1-chlorooctadecane (S...	12.550	4555917	40.644 ug/ml
Spiked Amount	50.000	Recovery	= 81.29%

Target Compounds

(f)=RT Delta > 1/2 Window

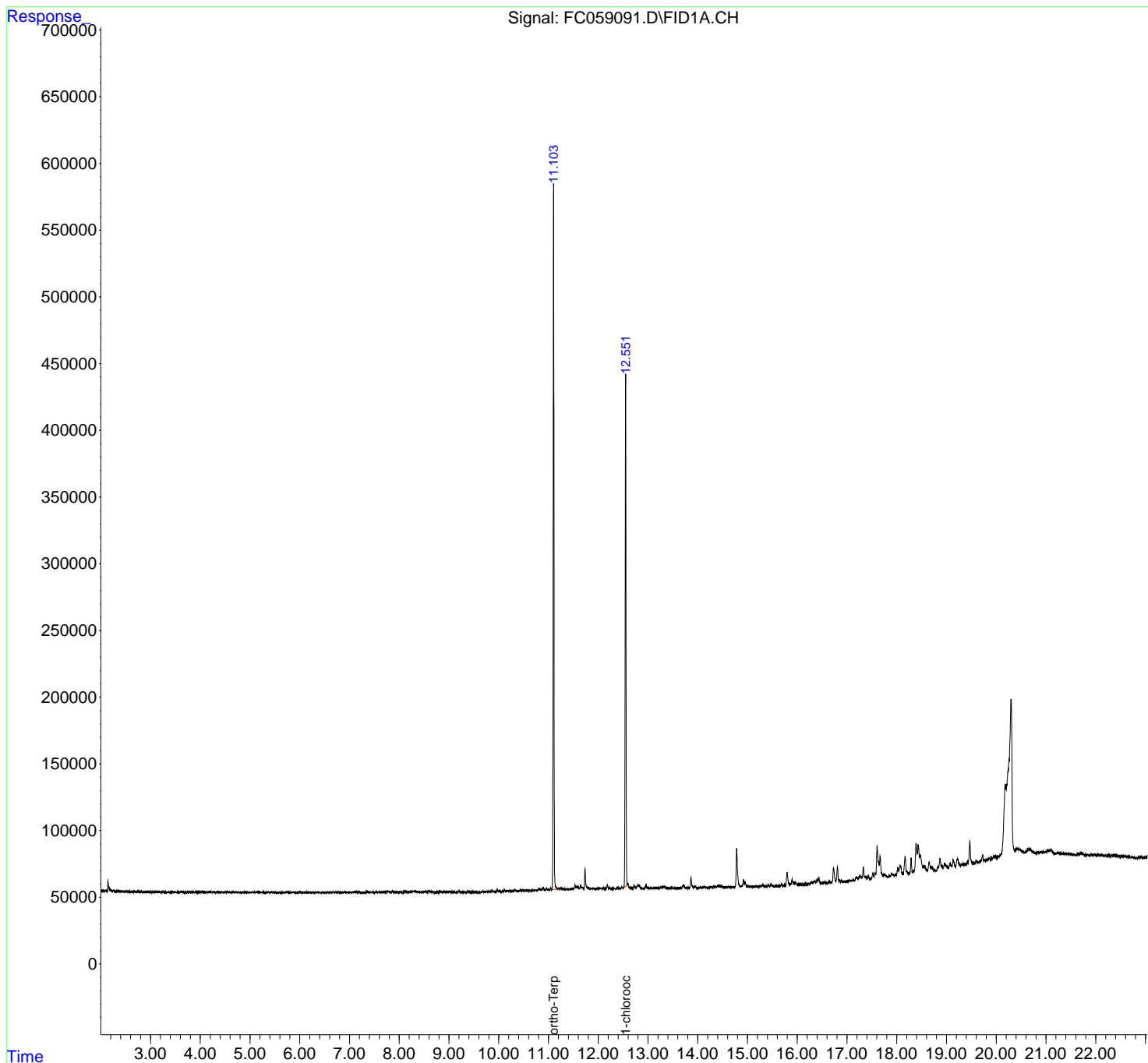
(m)=manual int.

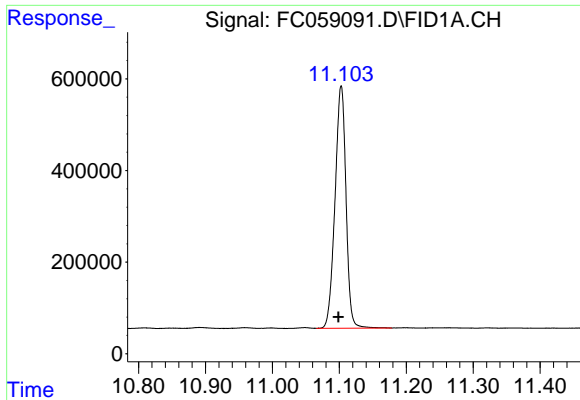
Data Path : Z:\pestpcbsrv\HPCHEM1\FID_C\Data\FC040622AL\
 Data File : FC059091.D
 Signal(s) : FID1A.CH
 Acq On : 06 Apr 2022 21:23
 Operator : UA/NP
 Sample : N2276-05
 Misc :
 ALS Vial : 8 Sample Multiplier: 1

Instrument :
 FID_C
 ClientSampleId :
 3

Integration File: sample.E
 Quant Time: Apr 07 01:59:34 2022
 Quant Method : Z:\pestpcbsrv\HPCHEM1\FID_C\Method\Aliphatic EPH 032522.M
 Quant Title : GC Extractables
 QLast Update : Fri Mar 25 23:18:46 2022
 Response via : Initial Calibration
 Integrator: ChemStation 6890 Scale Mode: Large solvent peaks clipped

Volume Inj. : 1 ul
 Signal Phase : Rxi-1ms
 Signal Info : 20M x 0.18mm x 0.18um

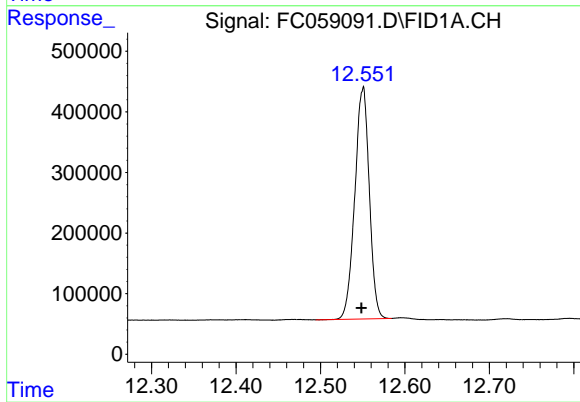




#9 ortho-Terphenyl (SURR)

R.T.: 11.103 min
Delta R.T.: 0.004 min
Response: 6029558
Conc: 41.85 ug/ml

Instrument :
FID_C
ClientSampleId :
3



#12 1-chlorooctadecane (SURR)

R.T.: 12.550 min
Delta R.T.: 0.002 min
Response: 4555917
Conc: 40.64 ug/ml