

Data Path : Z:\pestpcbsrv\HPCHEM1\FID_C\Data\FC040622AL\
 Data File : FC059106.D
 Signal(s) : FID1A.CH
 Acq On : 07 Apr 2022 7:19
 Operator : UA/NP
 Sample : 20 PPM ALIPHATIC HC STD
 Misc :
 ALS Vial : 2 Sample Multiplier: 1

Instrument :
 FID_C
 ClientSampleId :
 20 PPM ALIPHATIC HC STD

Manual Integrations
 APPROVED

Reviewed By :Yogesh Patel 04/07/2022
 Supervised By :mohammad ahmed 04/07/2022

Integration File: sample.E
 Quant Time: Apr 07 07:40:54 2022
 Quant Method : Z:\pestpcbsrv\HPCHEM1\FID_C\Method\Aliphatic EPH 032522.M
 Quant Title : GC Extractables
 QLast Update : Fri Mar 25 23:18:46 2022
 Response via : Initial Calibration
 Integrator: ChemStation 6890 Scale Mode: Large solvent peaks clipped

Volume Inj. : 1 ul
 Signal Phase : Rxi-1ms
 Signal Info : 20M x 0.18mm x 0.18um

Compound	R.T.	Response	Conc Units

System Monitoring Compounds			
9) S ortho-Terphenyl (SURR)	11.102	2886094	20.031 ug/ml
Spiked Amount	50.000	Recovery	= 40.06%
12) S 1-chlorooctadecane (S...	12.550	2265840	20.214 ug/ml
Spiked Amount	50.000	Recovery	= 40.43%
Target Compounds			
1) T n-Nonane (C9)	2.961	2486759	20.292 ug/ml
2) T n-Decane (C10)	4.003	2557937	20.873 ug/ml
3) T A~Naphthalene (C11.7)	5.553	2590318	20.631 ug/ml
4) T n-Dodecane (C12)	6.002	2652191	20.764 ug/ml
5) T A~2-methylnaphthalene...	6.600	2607505	20.340 ug/ml
6) T n-Tetradecane (C14)	7.785	2665059	20.497 ug/ml
7) T n-Hexadecane (C16)	9.376	2685981	20.227 ug/ml
8) T n-Octadecane (C18)	10.810	2704397	20.341 ug/ml
10) T n-Eicosane (C20)	12.113	2665595	20.344 ug/ml
11) T n-Heneicosane (C21)	12.721	2641612	20.246 ug/ml
13) T n-Docosane (C22)	13.304	2659832	20.532 ug/ml
14) T n-Tetracosane (C24)	14.402	2656680	21.031 ug/ml
15) T n-Hexacosane (C26)	15.418	2576943	21.334 ug/ml
16) T n-Octacosane (C28)	16.364	2640348	22.298 ug/ml
17) T n-Tricontane (C30)	17.249	2740518	24.023 ug/ml
18) T n-Dotriacontane (C32)	18.079	2632266	24.571 ug/mlm
19) T n-Tetratriacontane (C34)	18.859	2418547	23.937 ug/mlm
20) T n-Hexatriacontane (C36)	19.596	2184128	22.859 ug/ml
21) T n-Octatriacontane (C38)	20.294	2064441	22.435 ug/ml
22) T n-Tetracontane (C40)	21.039	2028071	21.822 ug/ml

(f)=RT Delta > 1/2 Window

(m)=manual int.

Data Path : Z:\pestpcbsrv\HPCHEM1\FID_C\Data\FC040622AL\
 Data File : FC059106.D
 Signal(s) : FID1A.CH
 Acq On : 07 Apr 2022 7:19
 Operator : UA/NP
 Sample : 20 PPM ALIPHATIC HC STD
 Misc :
 ALS Vial : 2 Sample Multiplier: 1

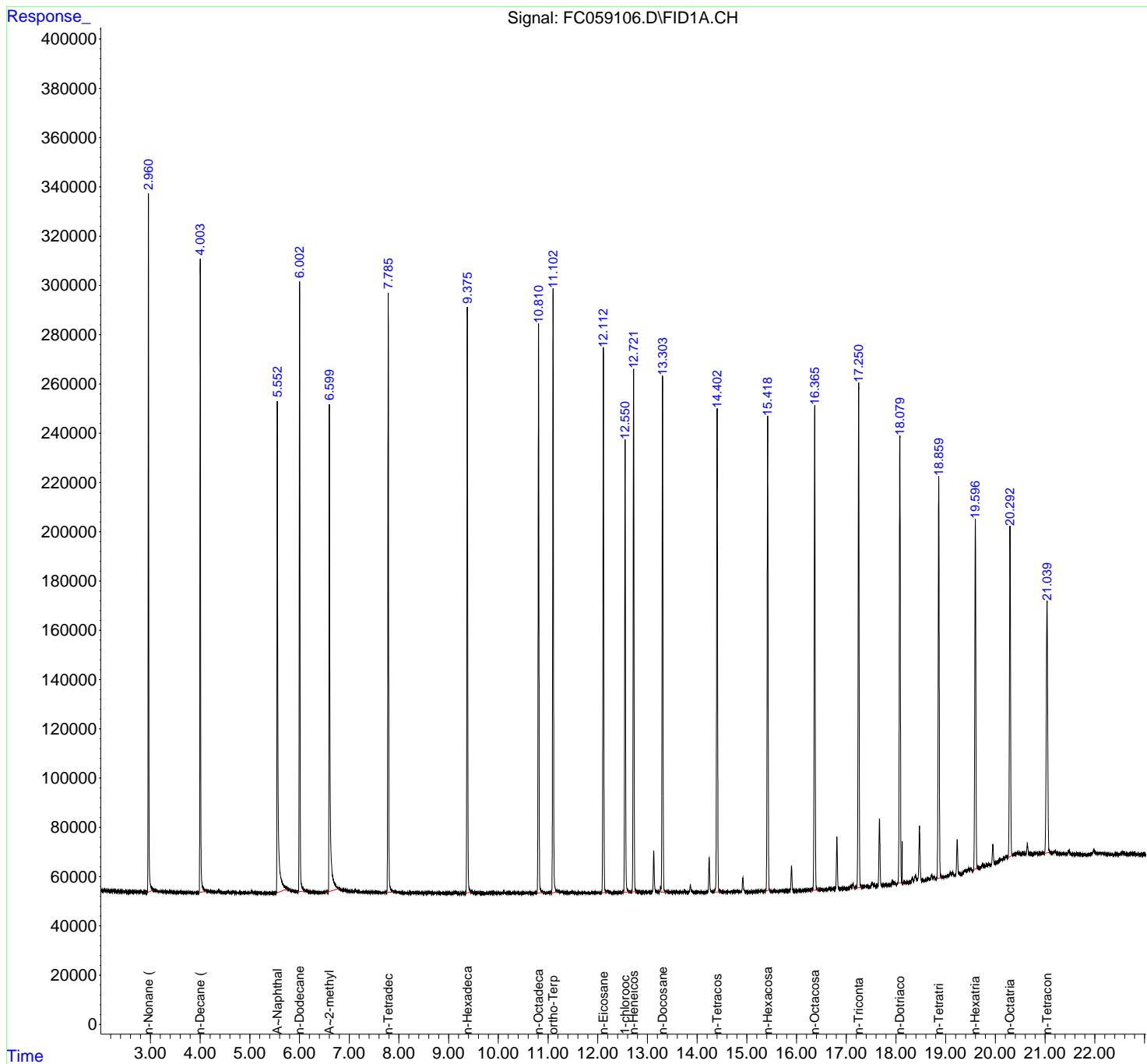
Instrument :
 FID_C
 ClientSampleId :
 20 PPM ALIPHATIC HC STD

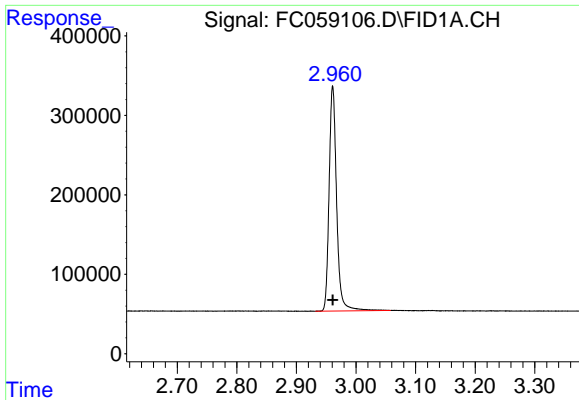
Manual Integrations
 APPROVED

Reviewed By :Yogesh Patel 04/07/2022
 Supervised By :mohammad ahmed 04/07/2022

Integration File: sample.E
 Quant Time: Apr 07 07:40:54 2022
 Quant Method : Z:\pestpcbsrv\HPCHEM1\FID_C\Method\Aliphatic EPH 032522.M
 Quant Title : GC Extractables
 QLast Update : Fri Mar 25 23:18:46 2022
 Response via : Initial Calibration
 Integrator: ChemStation 6890 Scale Mode: Large solvent peaks clipped

Volume Inj. : 1 ul
 Signal Phase : Rxi-1ms
 Signal Info : 20M x 0.18mm x 0.18um

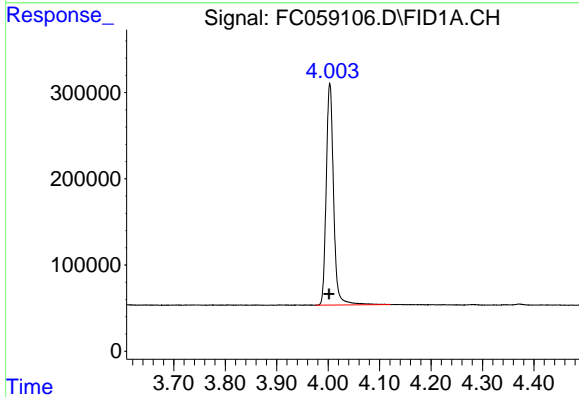




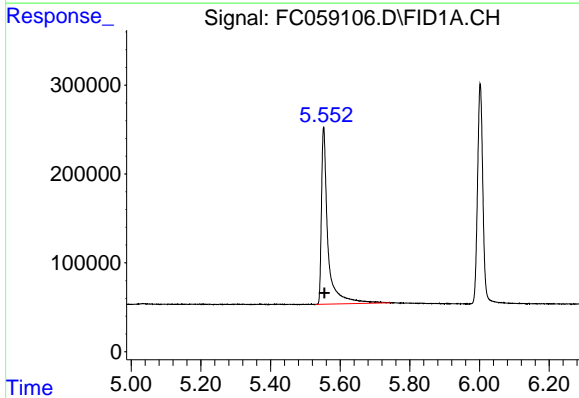
#1 n-Nonane (C9)
 R.T.: 2.961 min
 Delta R.T.: 0.000 min
 Response: 2486759
 Conc: 20.29 ug/ml

Instrument : FID_C
 Client Sample Id : 20 PPM ALIPHATIC HC STD

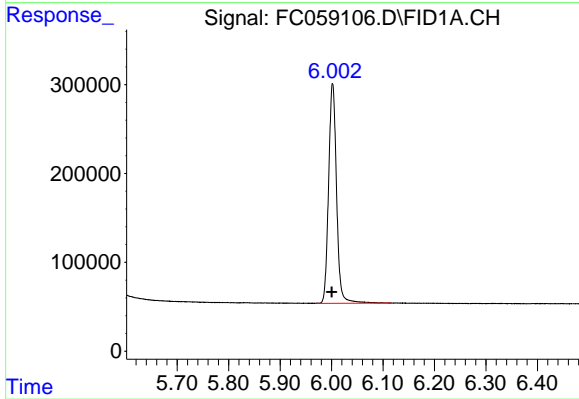
Manual Integrations
APPROVED
 Reviewed By :Yogesh Patel 04/07/2022
 Supervised By :mohammad ahmed 04/07/2022



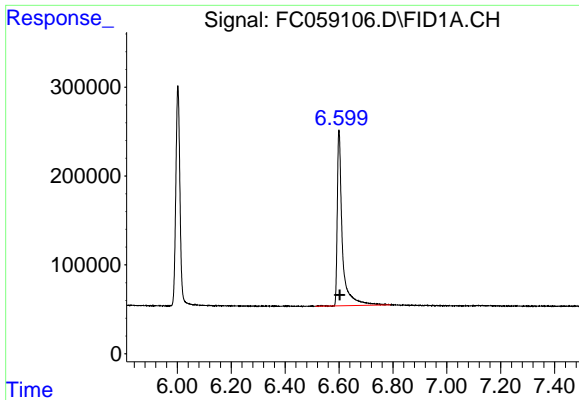
#2 n-Decane (C10)
 R.T.: 4.003 min
 Delta R.T.: 0.002 min
 Response: 2557937
 Conc: 20.87 ug/ml



#3 A~Naphthalene (C11.7)
 R.T.: 5.553 min
 Delta R.T.: -0.002 min
 Response: 2590318
 Conc: 20.63 ug/ml



#4 n-Dodecane (C12)
 R.T.: 6.002 min
 Delta R.T.: 0.002 min
 Response: 2652191
 Conc: 20.76 ug/ml



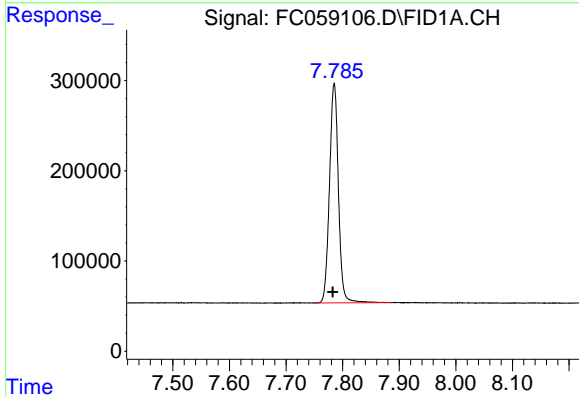
#5 A~2-methylnaphthalene (C12.89)

R.T.: 6.600 min
 Delta R.T.: -0.002 min
 Response: 2607505
 Conc: 20.34 ug/ml

Instrument : FID_C
 ClientSampleId : 20 PPM ALIPHATIC HC STD

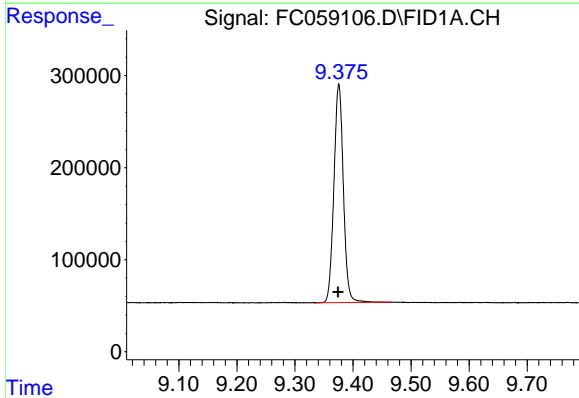
Manual Integrations
 APPROVED

Reviewed By :Yogesh Patel 04/07/2022
 Supervised By :mohammad ahmed 04/07/2022



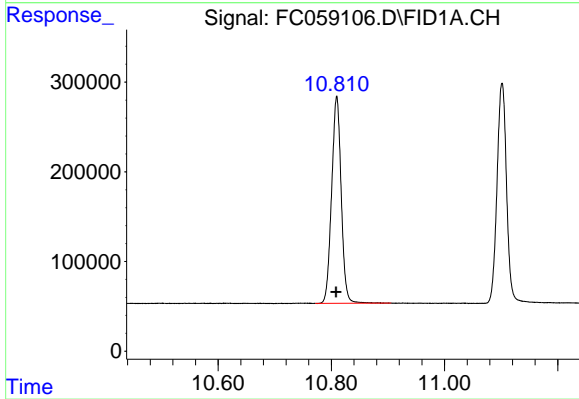
#6 n-Tetradecane (C14)

R.T.: 7.785 min
 Delta R.T.: 0.003 min
 Response: 2665059
 Conc: 20.50 ug/ml



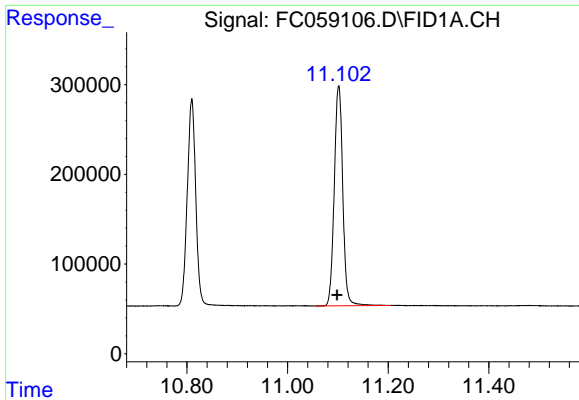
#7 n-Hexadecane (C16)

R.T.: 9.376 min
 Delta R.T.: 0.001 min
 Response: 2685981
 Conc: 20.23 ug/ml



#8 n-Octadecane (C18)

R.T.: 10.810 min
 Delta R.T.: 0.000 min
 Response: 2704397
 Conc: 20.34 ug/ml



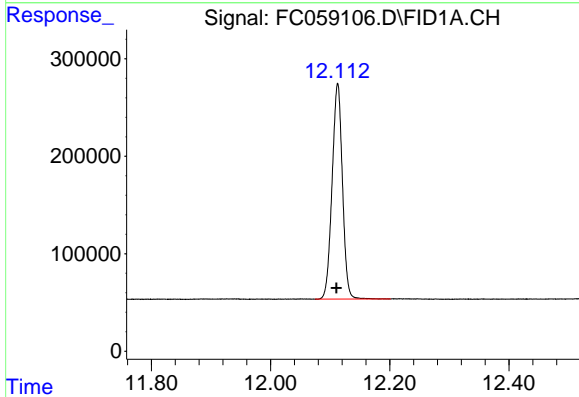
#9 ortho-Terphenyl (SURR)

R.T.: 11.102 min
 Delta R.T.: 0.003 min
 Response: 2886094
 Conc: 20.03 ug/ml

Instrument : FID_C
 ClientSampleId : 20 PPM ALIPHATIC HC STD

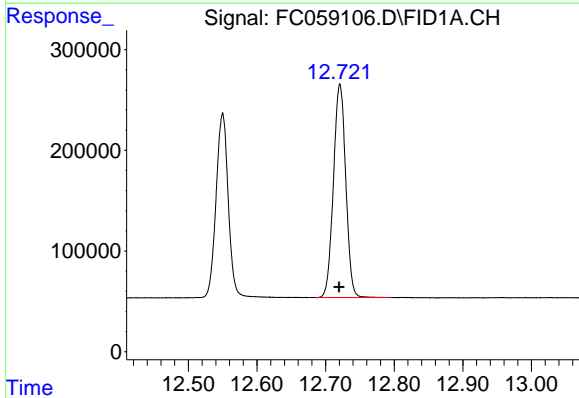
Manual Integrations
 APPROVED

Reviewed By :Yogesh Patel 04/07/2022
 Supervised By :mohammad ahmed 04/07/2022



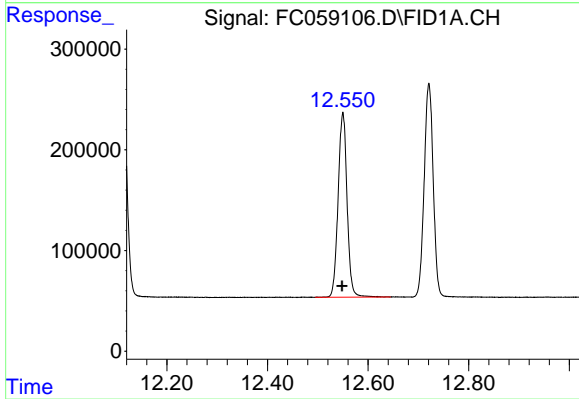
#10 n-Eicosane (C20)

R.T.: 12.113 min
 Delta R.T.: 0.002 min
 Response: 2665595
 Conc: 20.34 ug/ml



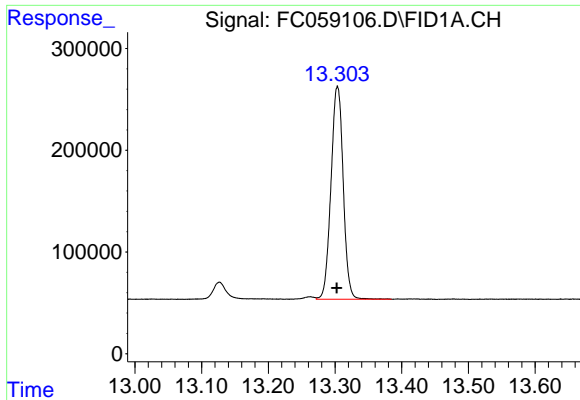
#11 n-Heneicosane (C21)

R.T.: 12.721 min
 Delta R.T.: 0.001 min
 Response: 2641612
 Conc: 20.25 ug/ml



#12 1-chlorooctadecane (SURR)

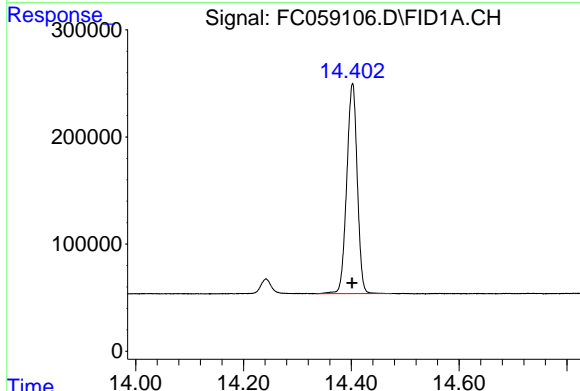
R.T.: 12.550 min
 Delta R.T.: 0.001 min
 Response: 2265840
 Conc: 20.21 ug/ml



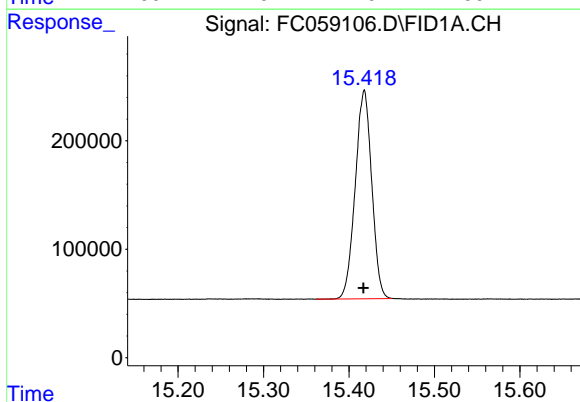
#13 n-Docosane (C22)
 R.T.: 13.304 min
 Delta R.T.: 0.001 min
 Response: 2659832
 Conc: 20.53 ug/ml

Instrument : FID_C
 Client Sample Id : 20 PPM ALIPHATIC HC STD

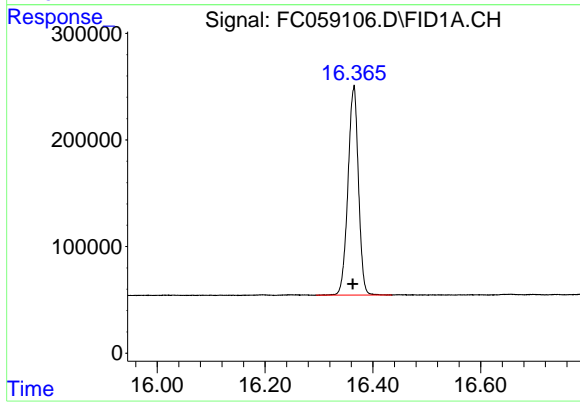
Manual Integrations
APPROVED
 Reviewed By :Yogesh Patel 04/07/2022
 Supervised By :mohammad ahmed 04/07/2022



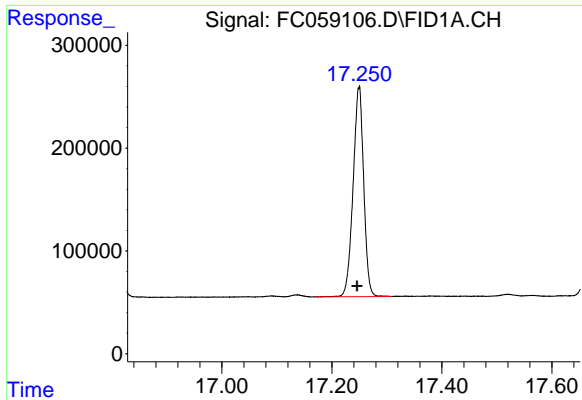
#14 n-Tetracosane (C24)
 R.T.: 14.402 min
 Delta R.T.: 0.000 min
 Response: 2656680
 Conc: 21.03 ug/ml



#15 n-Hexacosane (C26)
 R.T.: 15.418 min
 Delta R.T.: 0.000 min
 Response: 2576943
 Conc: 21.33 ug/ml



#16 n-Octacosane (C28)
 R.T.: 16.364 min
 Delta R.T.: 0.002 min
 Response: 2640348
 Conc: 22.30 ug/ml



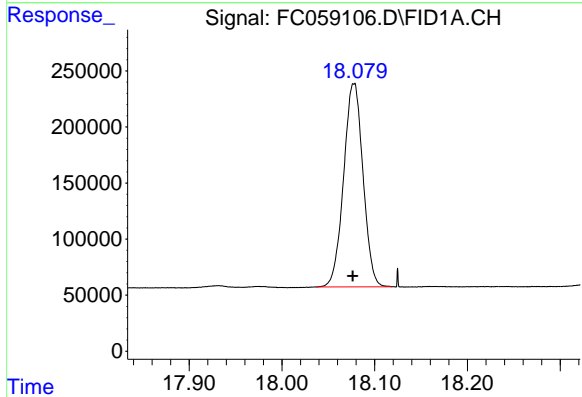
#17 n-Tricontane (C30)

R.T.: 17.249 min
Delta R.T.: 0.003 min
Response: 2740518
Conc: 24.02 ug/ml

Instrument :
FID_C
ClientSampleId :
20 PPM ALIPHATIC HC STD

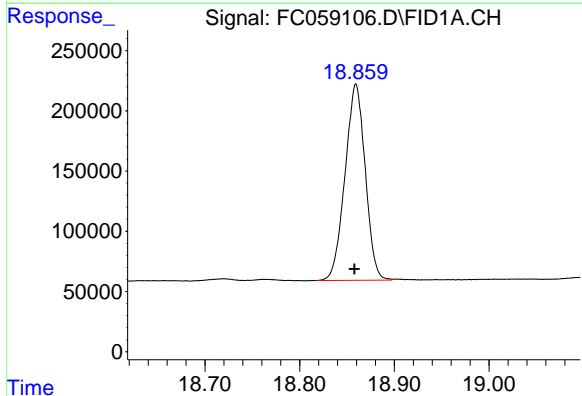
Manual Integrations
APPROVED

Reviewed By :Yogesh Patel 04/07/2022
Supervised By :mohammad ahmed 04/07/2022



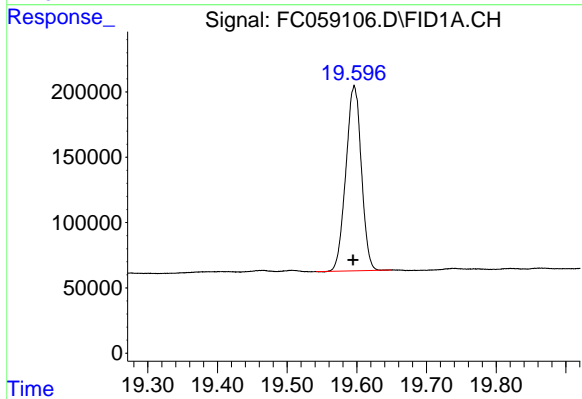
#18 n-Dotriacontane (C32)

R.T.: 18.079 min
Delta R.T.: 0.002 min
Response: 2632266
Conc: 24.57 ug/ml m



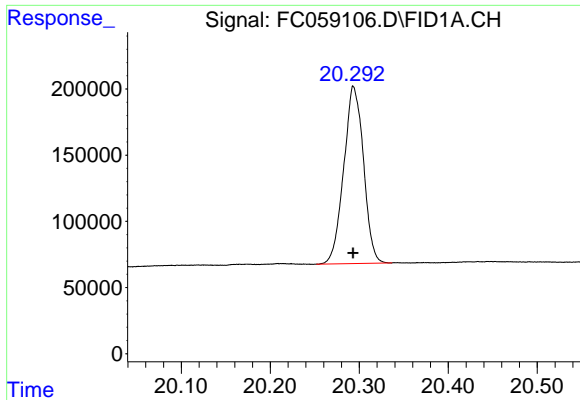
#19 n-Tetratriacontane (C34)

R.T.: 18.859 min
Delta R.T.: 0.001 min
Response: 2418547
Conc: 23.94 ug/ml m



#20 n-Hexatriacontane (C36)

R.T.: 19.596 min
Delta R.T.: 0.001 min
Response: 2184128
Conc: 22.86 ug/ml



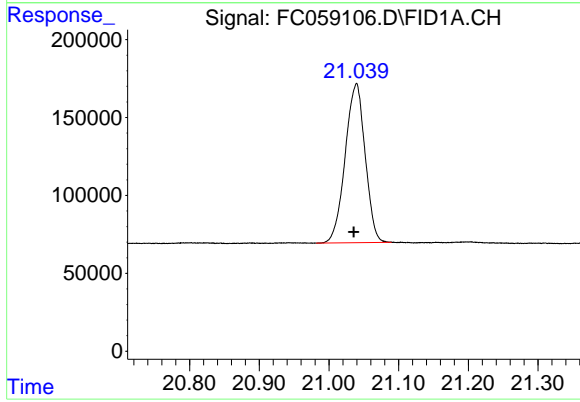
#21 n-Octatriacontane (C38)

R.T.: 20.294 min
Delta R.T.: 0.000 min
Response: 2064441
Conc: 22.43 ug/ml

Instrument : FID_C
ClientSampleId : 20 PPM ALIPHATIC HC STD

Manual Integrations
APPROVED

Reviewed By :Yogesh Patel 04/07/2022
Supervised By :mohammad ahmed 04/07/2022



#22 n-Tetracontane (C40)

R.T.: 21.039 min
Delta R.T.: 0.003 min
Response: 2028071
Conc: 21.82 ug/ml