

Data Path : Z:\pestpcbsrv\HPCHEM1\FID_C\Data\FC040921AL\
 Data File : FC053068.D
 Signal(s) : FID1A.CH
 Acq On : 10 Apr 2021 7:33
 Operator : DD\AJ
 Sample : M1967-06
 Misc :
 ALS Vial : 30 Sample Multiplier: 1

Instrument :
 FID_C
 ClientSampleId :

Integration File: autoint1.e
 Quant Time: Apr 12 01:24:22 2021
 Quant Method : Z:\pestpcbsrv\HPCHEM1\FID_C\Method\Alaphatic EPH 040821.M
 Quant Title : GC Extractables
 QLast Update : Fri Apr 09 09:23:51 2021
 Response via : Initial Calibration
 Integrator: ChemStation 6890 Scale Mode: Large solvent peaks clipped

Volume Inj. : 1 ul
 Signal Phase : Rxi-1ms
 Signal Info : 20M x 0.18mm x 0.18um

Compound	R.T.	Response	Conc Units

System Monitoring Compounds			
12) S 1-chlorooctadecane (S...	12.992	3394569	29.379 ug/ml
Spiked Amount	50.000	Recovery	= 58.76%

Target Compounds

(f)=RT Delta > 1/2 Window

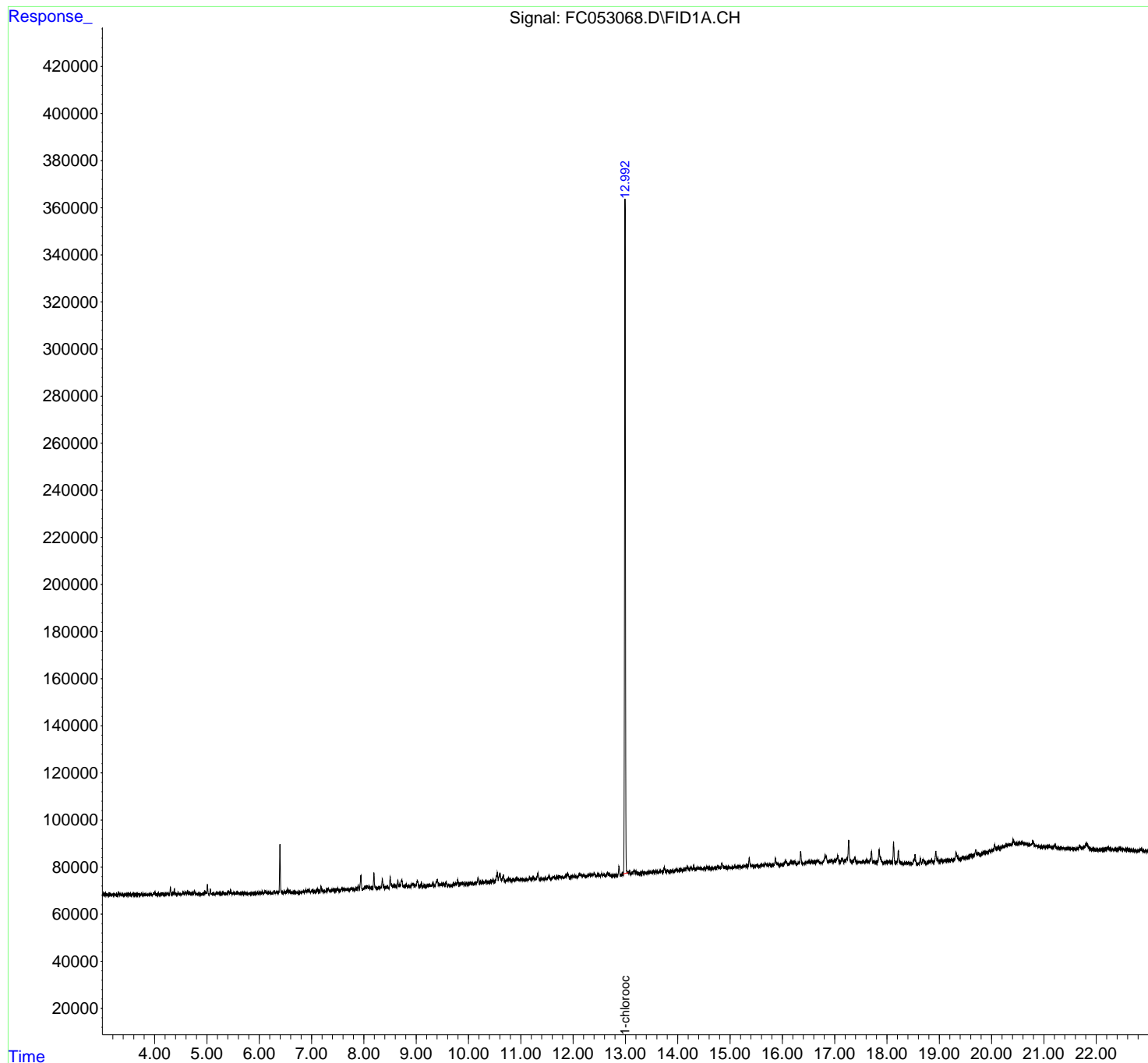
(m)=manual int.

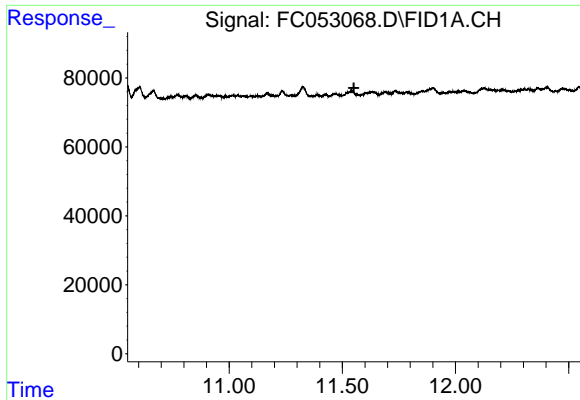
Data Path : Z:\pestpcbsrv\HPCHEM1\FID_C\Data\FC040921AL\
Data File : FC053068.D
Signal(s) : FID1A.CH
Acq On : 10 Apr 2021 7:33
Operator : DD\AJ
Sample : M1967-06
Misc :
ALS Vial : 30 Sample Multiplier: 1

Instrument :
FID_C
ClientSampled :

Integration File: autoint1.e
Quant Time: Apr 12 01:24:22 2021
Quant Method : Z:\pestpcbsrv\HPCHEM1\FID_C\Method\Aliphatic EPH 040821.M
Quant Title : GC Extractables
QLast Update : Fri Apr 09 09:23:51 2021
Response via : Initial Calibration
Integrator: ChemStation 6890 Scale Mode: Large solvent peaks clipped

Volume Inj. : 1 ul
Signal Phase : Rxi-1ms
Signal Info : 20M x 0.18mm x 0.18um

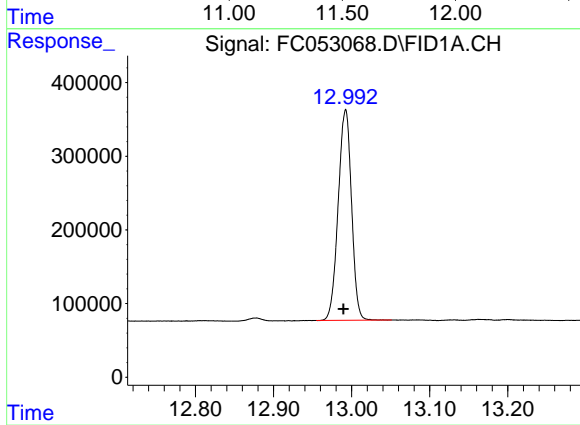




#9 ortho-Terphenyl (SURR)

R.T.: 0.000 min
Exp R.T.: 11.551 min
Response: 0
Conc: N.D.

Instrument :
FID_C
ClientSampleId :



#12 1-chlorooctadecane (SURR)

R.T.: 12.992 min
Delta R.T.: 0.002 min
Response: 3394569
Conc: 29.38 ug/ml