

Data Path : Z:\pestpcbsrv\HPCHEM1\FID_C\Data\FC041020AL\
 Data File : FC046759.D
 Signal(s) : FID1A.CH
 Acq On : 10 Apr 2020 20:35
 Operator : DD\AJ
 Sample : L2205-12
 Misc :
 ALS Vial : 21 Sample Multiplier: 1

Integration File: sample.E
 Quant Time: Apr 11 01:16:17 2020
 Quant Method : Z:\pestpcbsrv\HPCHEM1\FID_C\Method\Alaphatic EPH 032320.M
 Quant Title : GC Extractables
 QLast Update : Tue Mar 24 12:45:07 2020
 Response via : Initial Calibration
 Integrator: ChemStation 6890 Scale Mode: Large solvent peaks clipped

Volume Inj. : 1 ul
 Signal Phase : Rxi-1ms
 Signal Info : 20M x 0.18mm x 0.18um

Compound	R.T.	Response	Conc Units

System Monitoring Compounds			
9) S ortho-Terphenyl (SURR)	11.762	3086102	28.231 ug/ml
Spiked Amount	50.000	Recovery	= 56.46%
12) S 1-chlorooctadecane (S...	13.177	19970151	231.731 ug/ml
Spiked Amount	50.000	Recovery	= 463.46%

Target Compounds

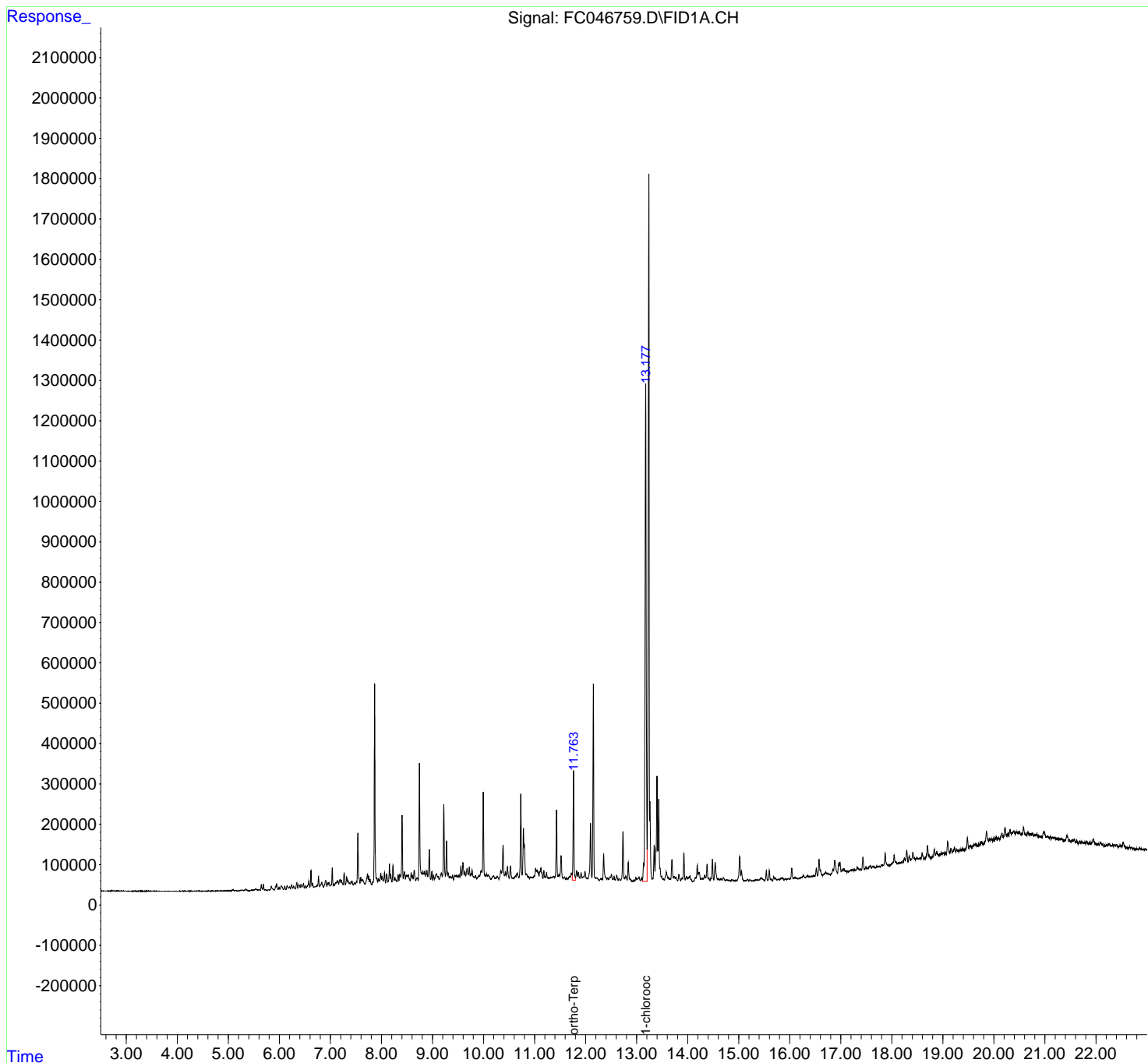
(f)=RT Delta > 1/2 Window

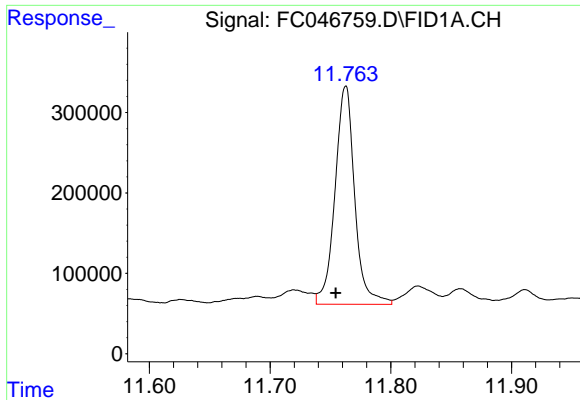
(m)=manual int.

Data Path : Z:\pestpcbsrv\HPCHEM1\FID_C\Data\FC041020AL\
Data File : FC046759.D
Signal(s) : FID1A.CH
Acq On : 10 Apr 2020 20:35
Operator : DD\AJ
Sample : L2205-12
Misc :
ALS Vial : 21 Sample Multiplier: 1

Integration File: sample.E
Quant Time: Apr 11 01:16:17 2020
Quant Method : Z:\pestpcbsrv\HPCHEM1\FID_C\Method\Aliphatic EPH 032320.M
Quant Title : GC Extractables
QLast Update : Tue Mar 24 12:45:07 2020
Response via : Initial Calibration
Integrator: ChemStation 6890 Scale Mode: Large solvent peaks clipped

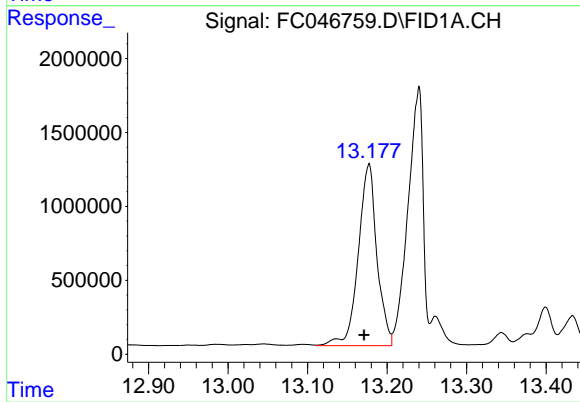
Volume Inj. : 1 ul
Signal Phase : Rxi-1ms
Signal Info : 20M x 0.18mm x 0.18um





#9 ortho-Terphenyl (SURR)

R.T.: 11.762 min
Delta R.T.: 0.008 min
Response: 3086102
Conc: 28.23 ug/ml



#12 1-chlorooctadecane (SURR)

R.T.: 13.177 min
Delta R.T.: 0.006 min
Response: 19970151
Conc: 231.73 ug/ml