

Data Path : Z:\pestpcbsrv\HPCHEM1\FID_C\Data\FC041122AL\
 Data File : FC059166.D
 Signal(s) : FID1A.CH
 Acq On : 11 Apr 2022 13:32
 Operator : UA/NP
 Sample : N2317-04
 Misc :
 ALS Vial : 4 Sample Multiplier: 1

Instrument :
 FID_C
 ClientSampleId :
 WEST-2-EPH-2

Integration File: autoint1.e
 Quant Time: Apr 12 02:13:50 2022
 Quant Method : Z:\pestpcbsrv\HPCHEM1\FID_C\Method\Aliphatic EPH 032522.M
 Quant Title : GC Extractables
 QLast Update : Fri Mar 25 23:18:46 2022
 Response via : Initial Calibration
 Integrator: ChemStation 6890 Scale Mode: Large solvent peaks clipped

Volume Inj. : 1 ul
 Signal Phase : Rxi-1ms
 Signal Info : 20M x 0.18mm x 0.18um

Compound	R.T.	Response	Conc Units

System Monitoring Compounds			
9) S ortho-Terphenyl (SURR)	11.100	5846083	40.575 ug/ml
Spiked Amount	50.000	Recovery	= 81.15%
12) S 1-chlorooctadecane (S...	12.548	4590394	40.951 ug/ml
Spiked Amount	50.000	Recovery	= 81.90%

Target Compounds

(f)=RT Delta > 1/2 Window

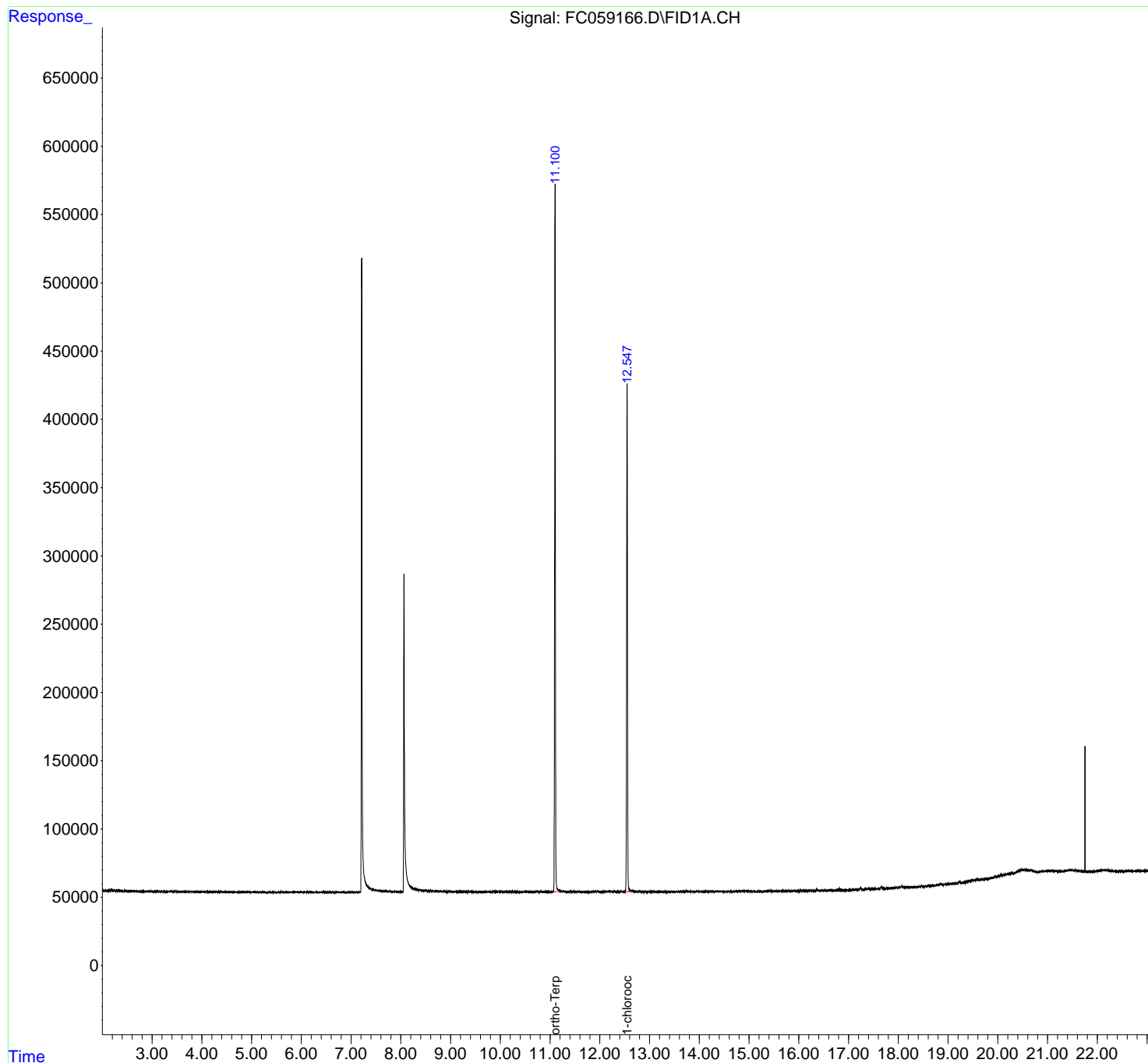
(m)=manual int.

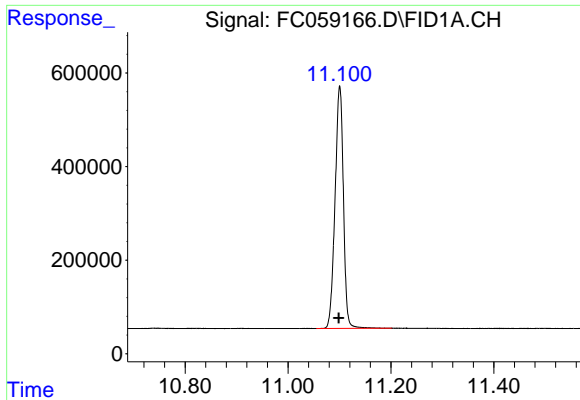
Data Path : Z:\pestpcbsrv\HPCHEM1\FID_C\Data\FC041122AL\
Data File : FC059166.D
Signal(s) : FID1A.CH
Acq On : 11 Apr 2022 13:32
Operator : UA/NP
Sample : N2317-04
Misc :
ALS Vial : 4 Sample Multiplier: 1

Instrument :
FID_C
ClientSampleId :
WEST-2-EPH-2

Integration File: autoint1.e
Quant Time: Apr 12 02:13:50 2022
Quant Method : Z:\pestpcbsrv\HPCHEM1\FID_C\Method\Aliphatic EPH 032522.M
Quant Title : GC Extractables
QLast Update : Fri Mar 25 23:18:46 2022
Response via : Initial Calibration
Integrator: ChemStation 6890 Scale Mode: Large solvent peaks clipped

Volume Inj. : 1 ul
Signal Phase : Rxi-1ms
Signal Info : 20M x 0.18mm x 0.18um

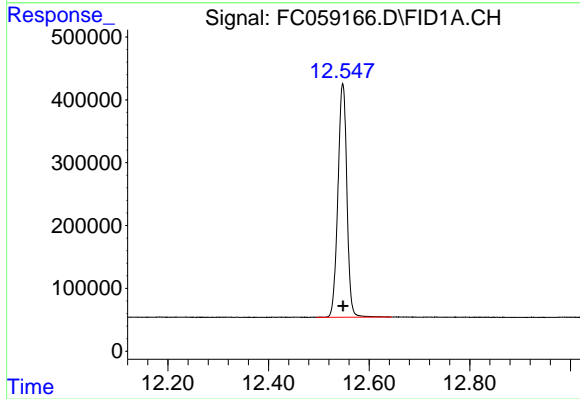




#9 ortho-Terphenyl (SURR)

R.T.: 11.100 min
Delta R.T.: 0.002 min
Response: 5846083
Conc: 40.57 ug/ml

Instrument :
FID_C
ClientSampleId :
WEST-2-EPH-2



#12 1-chlorooctadecane (SURR)

R.T.: 12.548 min
Delta R.T.: 0.000 min
Response: 4590394
Conc: 40.95 ug/ml