

Data Path : Z:\pestpcbsrv\HPCHEM1\FID_C\Data\FC041122AL\
 Data File : FC059174.D
 Signal(s) : FID1A.CH
 Acq On : 11 Apr 2022 20:13
 Operator : UA/NP
 Sample : 20 PPM ALIPHATIC HC STD
 Misc :
 ALS Vial : 2 Sample Multiplier: 1

Instrument :
 FID_C
 ClientSampleId :
 20 PPM ALIPHATIC HC STD

Manual Integrations
 APPROVED

Reviewed By :Yogesh Patel 04/12/2022
 Supervised By :mohammad ahmed 04/13/2022

Integration File: autoint1.e
 Quant Time: Apr 12 02:15:38 2022
 Quant Method : Z:\pestpcbsrv\HPCHEM1\FID_C\Method\Aliphatic EPH 032522.M
 Quant Title : GC Extractables
 QLast Update : Fri Mar 25 23:18:46 2022
 Response via : Initial Calibration
 Integrator: ChemStation 6890 Scale Mode: Large solvent peaks clipped

Volume Inj. : 1 ul
 Signal Phase : Rxi-1ms
 Signal Info : 20M x 0.18mm x 0.18um

Compound	R.T.	Response	Conc Units

System Monitoring Compounds			
9) S ortho-Terphenyl (SURR)	11.102	2887554	20.041 ug/ml
Spiked Amount	50.000	Recovery	= 40.08%
12) S 1-chlorooctadecane (S...	12.549	2233404	19.924 ug/mlm
Spiked Amount	50.000	Recovery	= 39.85%
Target Compounds			
1) T n-Nonane (C9)	2.965	2637545	21.523 ug/ml
2) T n-Decane (C10)	4.006	2640467	21.547 ug/ml
3) T A~Naphthalene (C11.7)	5.554	2714811	21.623 ug/ml
4) T n-Dodecane (C12)	6.003	2734480	21.409 ug/ml
5) T A~2-methylnaphthalene...	6.602	2735806	21.340 ug/ml
6) T n-Tetradecane (C14)	7.785	2732492	21.016 ug/ml
7) T n-Hexadecane (C16)	9.377	2750118	20.710 ug/ml
8) T n-Octadecane (C18)	10.810	2709972	20.383 ug/ml
10) T n-Eicosane (C20)	12.112	2621554	20.008 ug/ml
11) T n-Heneicosane (C21)	12.721	2595387	19.891 ug/ml
13) T n-Docosane (C22)	13.304	2563207	19.786 ug/mlm
14) T n-Tetracosane (C24)	14.401	2496867	19.766 ug/mlm
15) T n-Hexacosane (C26)	15.417	2428163	20.102 ug/ml
16) T n-Octacosane (C28)	16.363	2394981	20.226 ug/mlm
17) T n-Tricontane (C30)	17.247	2380172	20.865 ug/ml
18) T n-Dotriacontane (C32)	18.076	2329357	21.743 ug/mlm
19) T n-Tetratriacontane (C34)	18.857	2254050	22.309 ug/ml
20) T n-Hexatriacontane (C36)	19.593	2074106	21.707 ug/mlm
21) T n-Octatriacontane (C38)	20.292	1941616	21.100 ug/mlm
22) T n-Tetracontane (C40)	21.034	2073289	22.308 ug/mlm

(f)=RT Delta > 1/2 Window

(m)=manual int.

Data Path : Z:\pestpcbsrv\HPCHEM1\FID_C\Data\FC041122AL\
 Data File : FC059174.D
 Signal(s) : FID1A.CH
 Acq On : 11 Apr 2022 20:13
 Operator : UA/NP
 Sample : 20 PPM ALIPHATIC HC STD
 Misc :
 ALS Vial : 2 Sample Multiplier: 1

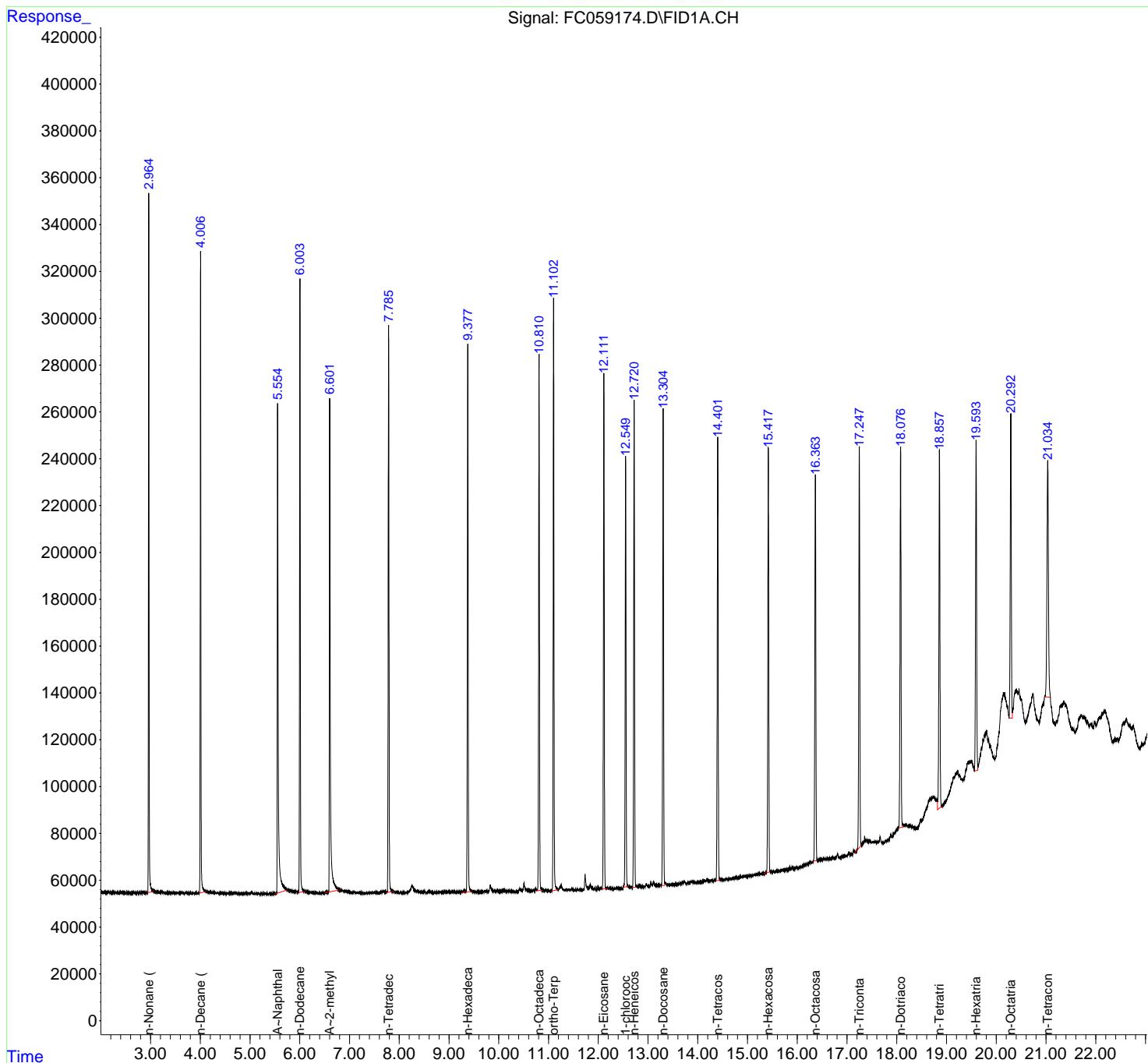
Instrument :
 FID_C
ClientSampleId :
 20 PPM ALIPHATIC HC STD

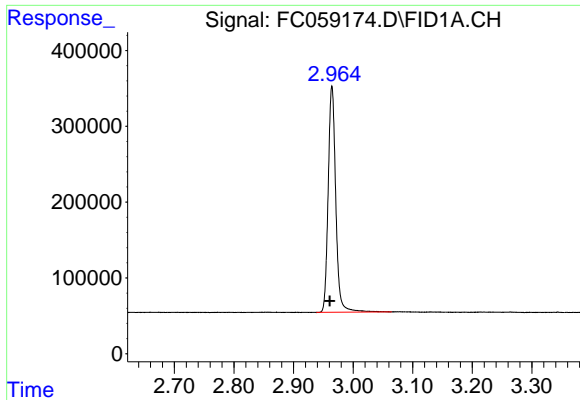
Manual Integrations
APPROVED

Reviewed By :Yogesh Patel 04/12/2022
 Supervised By :mohammad ahmed 04/13/2022

Integration File: autoint1.e
 Quant Time: Apr 12 02:15:38 2022
 Quant Method : Z:\pestpcbsrv\HPCHEM1\FID_C\Method\Aliphatic EPH 032522.M
 Quant Title : GC Extractables
 QLast Update : Fri Mar 25 23:18:46 2022
 Response via : Initial Calibration
 Integrator: ChemStation 6890 Scale Mode: Large solvent peaks clipped

Volume Inj. : 1 ul
 Signal Phase : Rxi-1ms
 Signal Info : 20M x 0.18mm x 0.18um

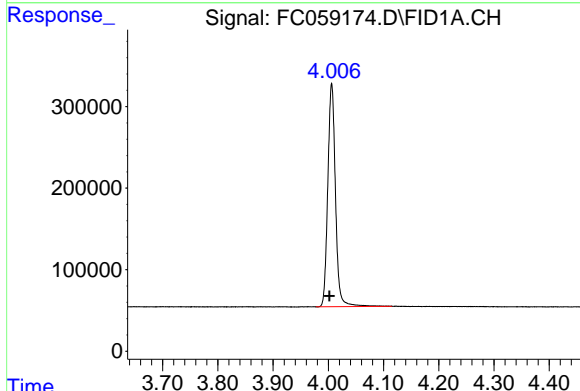




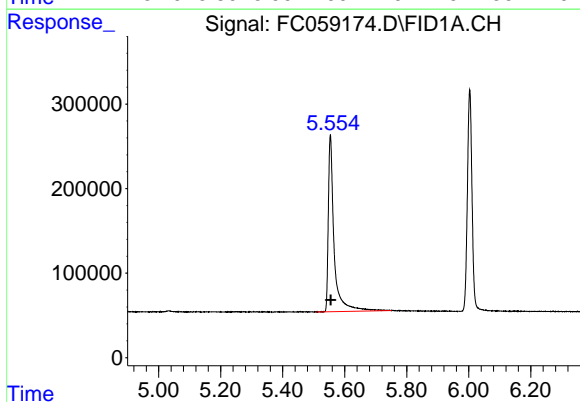
#1 n-Nonane (C9)
 R.T.: 2.965 min
 Delta R.T.: 0.004 min
 Response: 2637545
 Conc: 21.52 ug/ml

Instrument : FID_C
 Client Sample Id : 20 PPM ALIPHATIC HC STD

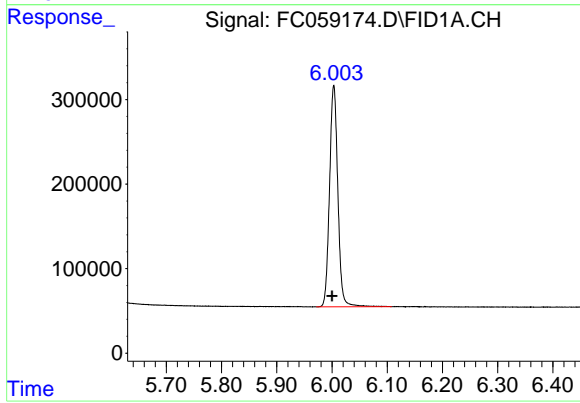
Manual Integrations
APPROVED
 Reviewed By :Yogesh Patel 04/12/2022
 Supervised By :mohammad ahmed 04/13/2022



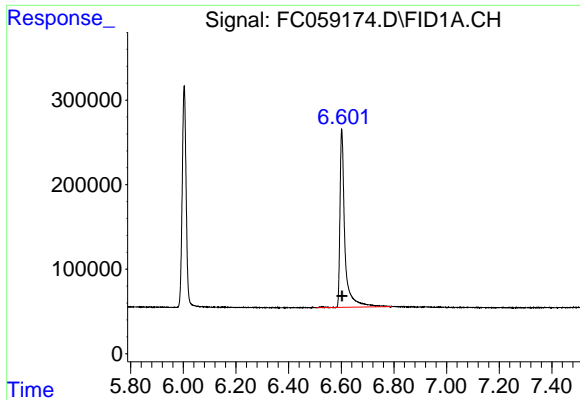
#2 n-Decane (C10)
 R.T.: 4.006 min
 Delta R.T.: 0.004 min
 Response: 2640467
 Conc: 21.55 ug/ml



#3 A~Naphthalene (C11.7)
 R.T.: 5.554 min
 Delta R.T.: -0.001 min
 Response: 2714811
 Conc: 21.62 ug/ml



#4 n-Dodecane (C12)
 R.T.: 6.003 min
 Delta R.T.: 0.003 min
 Response: 2734480
 Conc: 21.41 ug/ml



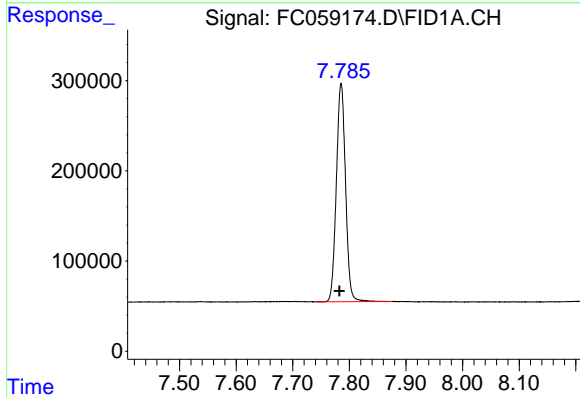
#5 A~2-methylnaphthalene (C12.89)

R.T.: 6.602 min
 Delta R.T.: 0.000 min
 Response: 2735806
 Conc: 21.34 ug/ml

Instrument : FID_C
 ClientSampleId : 20 PPM ALIPHATIC HC STD

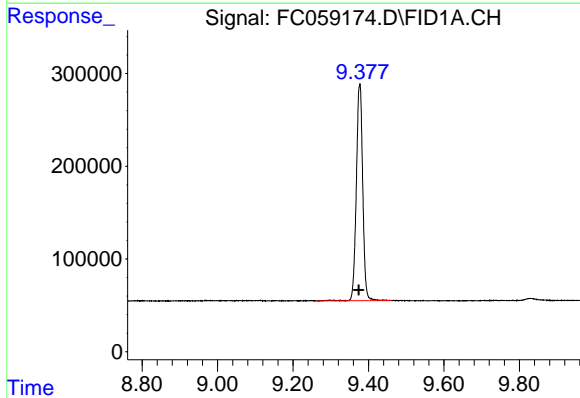
Manual Integrations
 APPROVED

Reviewed By :Yogesh Patel 04/12/2022
 Supervised By :mohammad ahmed 04/13/2022



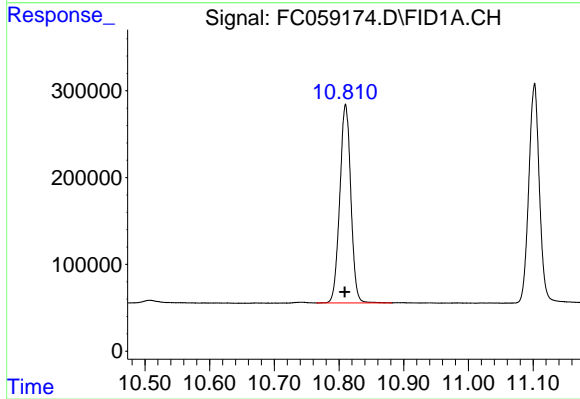
#6 n-Tetradecane (C14)

R.T.: 7.785 min
 Delta R.T.: 0.003 min
 Response: 2732492
 Conc: 21.02 ug/ml



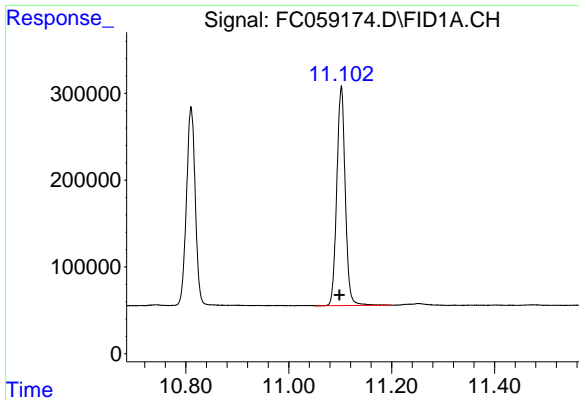
#7 n-Hexadecane (C16)

R.T.: 9.377 min
 Delta R.T.: 0.002 min
 Response: 2750118
 Conc: 20.71 ug/ml



#8 n-Octadecane (C18)

R.T.: 10.810 min
 Delta R.T.: 0.002 min
 Response: 2709972
 Conc: 20.38 ug/ml



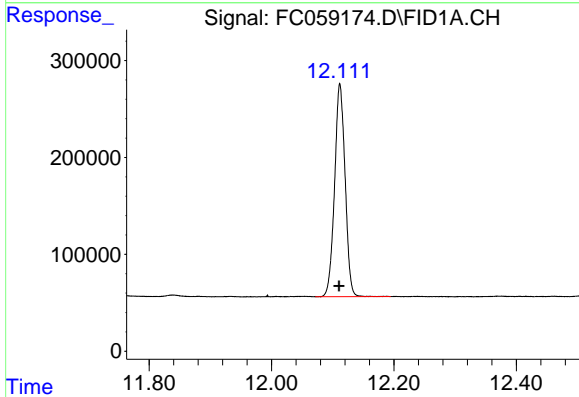
#9 ortho-Terphenyl (SURR)

R.T.: 11.102 min
 Delta R.T.: 0.003 min
 Response: 2887554
 Conc: 20.04 ug/ml

Instrument : FID_C
 ClientSampleId : 20 PPM ALIPHATIC HC STD

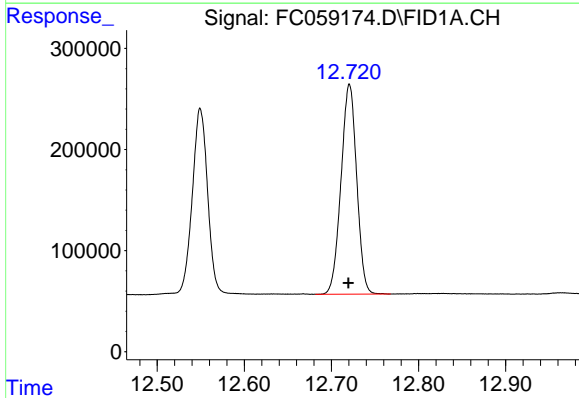
Manual Integrations
 APPROVED

Reviewed By :Yogesh Patel 04/12/2022
 Supervised By :mohammad ahmed 04/13/2022



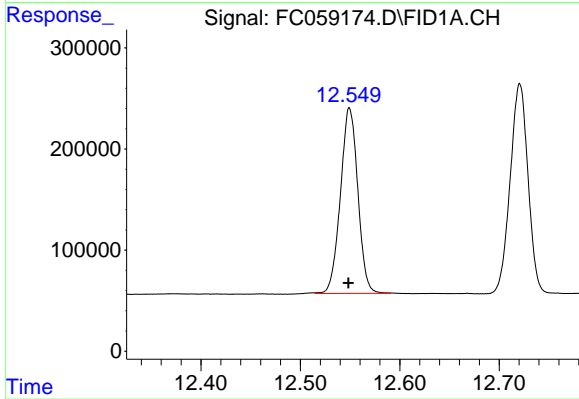
#10 n-Eicosane (C20)

R.T.: 12.112 min
 Delta R.T.: 0.001 min
 Response: 2621554
 Conc: 20.01 ug/ml



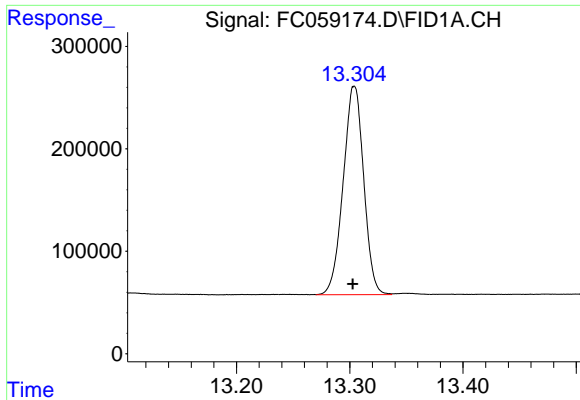
#11 n-Heneicosane (C21)

R.T.: 12.721 min
 Delta R.T.: 0.001 min
 Response: 2595387
 Conc: 19.89 ug/ml



#12 1-chlorooctadecane (SURR)

R.T.: 12.549 min
 Delta R.T.: 0.000 min
 Response: 2233404
 Conc: 19.92 ug/ml m



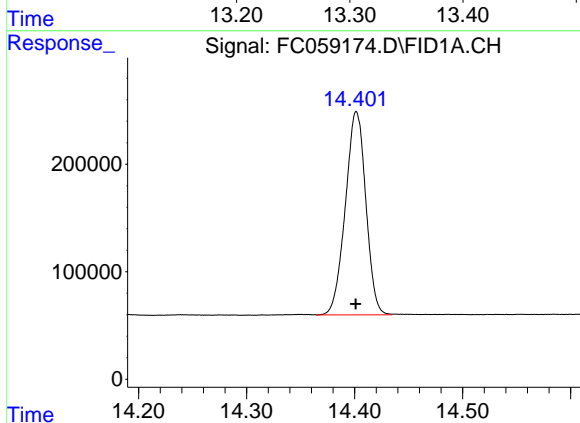
#13 n-Docosane (C22)

R.T.: 13.304 min
 Delta R.T.: 0.001 min
 Response: 2563207
 Conc: 19.79 ug/ml

Instrument :
 FID_C
 ClientSampleId :
 20 PPM ALIPHATIC HC STD

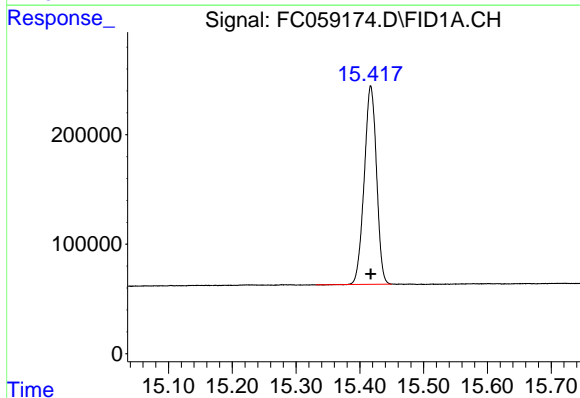
Manual Integrations
 APPROVED

Reviewed By :Yogesh Patel 04/12/2022
 Supervised By :mohammad ahmed 04/13/2022



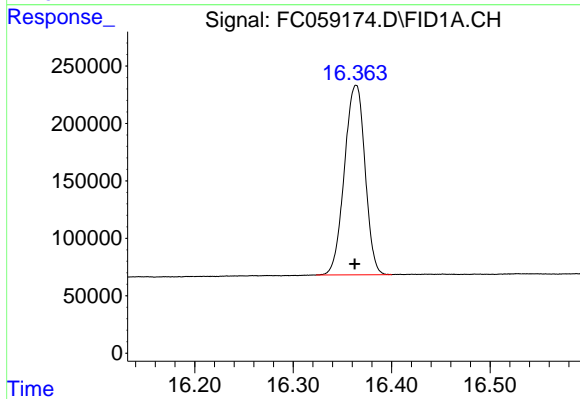
#14 n-Tetracosane (C24)

R.T.: 14.401 min
 Delta R.T.: 0.000 min
 Response: 2496867
 Conc: 19.77 ug/ml m



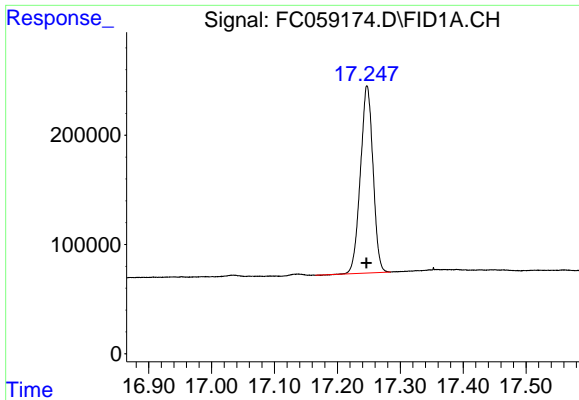
#15 n-Hexacosane (C26)

R.T.: 15.417 min
 Delta R.T.: 0.000 min
 Response: 2428163
 Conc: 20.10 ug/ml



#16 n-Octacosane (C28)

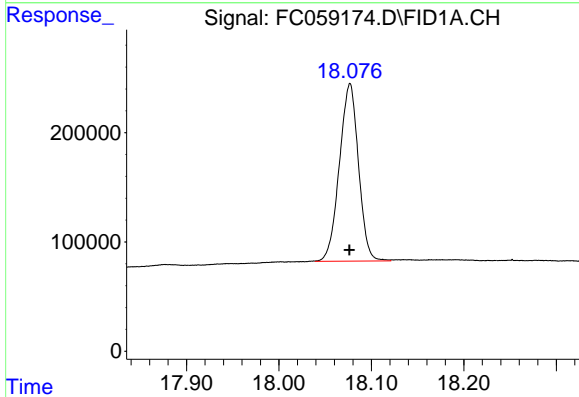
R.T.: 16.363 min
 Delta R.T.: 0.000 min
 Response: 2394981
 Conc: 20.23 ug/ml m



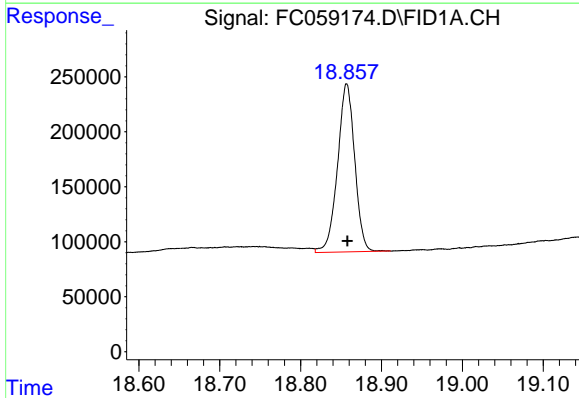
#17 n-Tricontane (C30)
 R.T.: 17.247 min
 Delta R.T.: 0.001 min
 Response: 2380172
 Conc: 20.86 ug/ml

Instrument : FID_C
 Client Sample Id : 20 PPM ALIPHATIC HC STD

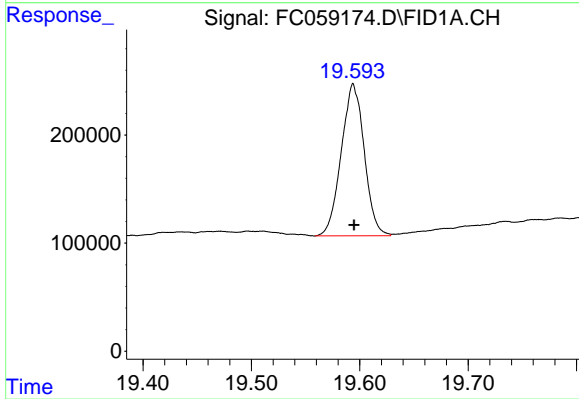
Manual Integrations
APPROVED
 Reviewed By :Yogesh Patel 04/12/2022
 Supervised By :mohammad ahmed 04/13/2022



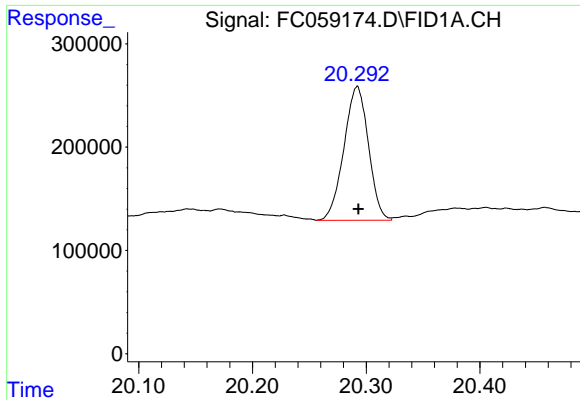
#18 n-Dotriacontane (C32)
 R.T.: 18.076 min
 Delta R.T.: 0.000 min
 Response: 2329357
 Conc: 21.74 ug/ml m



#19 n-Tetratriacontane (C34)
 R.T.: 18.857 min
 Delta R.T.: 0.000 min
 Response: 2254050
 Conc: 22.31 ug/ml



#20 n-Hexatriacontane (C36)
 R.T.: 19.593 min
 Delta R.T.: -0.001 min
 Response: 2074106
 Conc: 21.71 ug/ml m



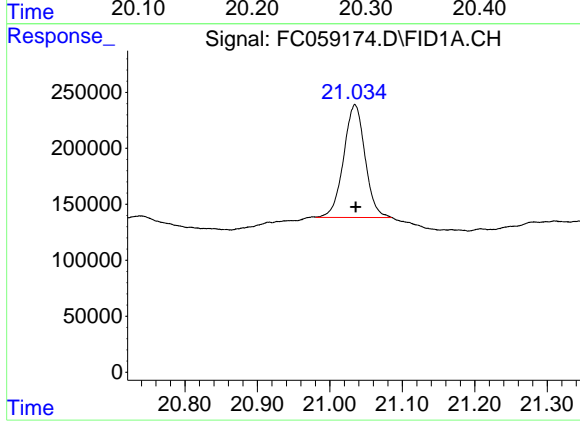
#21 n-Octatriacontane (C38)

R.T.: 20.292 min
 Delta R.T.: -0.001 min
 Response: 1941616
 Conc: 21.10 ug/ml

Instrument : FID_C
 ClientSampleId : 20 PPM ALIPHATIC HC STD

Manual Integrations
 APPROVED

Reviewed By :Yogesh Patel 04/12/2022
 Supervised By :mohammad ahmed 04/13/2022



#22 n-Tetracontane (C40)

R.T.: 21.034 min
 Delta R.T.: -0.002 min
 Response: 2073289
 Conc: 22.31 ug/ml m