

Data Path : Z:\pestpcbsrv\HPCHEM1\FID\_C\Data\FC041219AL\  
 Data File : FC040583.D  
 Signal(s) : FID1A.CH  
 Acq On : 13 Apr 2019 9:14  
 Operator : AJ\SJ  
 Sample : K2373-01DL 5X  
 Misc :  
 ALS Vial : 34 Sample Multiplier: 1

Integration File: autoint1.e  
 Quant Time: Apr 15 00:34:57 2019  
 Quant Method : Z:\pestpcbsrv\HPCHEM1\FID\_C\Method\Alaphatic EPH 032319.M  
 Quant Title : GC Extractables  
 QLast Update : Sat Mar 23 13:38:33 2019  
 Response via : Initial Calibration  
 Integrator: ChemStation 6890 Scale Mode: Large solvent peaks clipped

Volume Inj. : 1 ul  
 Signal Phase : Rxi-1ms  
 Signal Info : 20M x 0.18mm x 0.18um

Compound	R.T.	Response	Conc Units
System Monitoring Compounds			
9) S ortho-Terphenyl (SURR)	11.026	815667	6.334 ug/ml
Spiked Amount	50.000	Recovery =	12.67%
12) S 1-chlorooctadecane (S...	12.456	849519	8.600 ug/ml
Spiked Amount	50.000	Recovery =	17.20%

Target Compounds

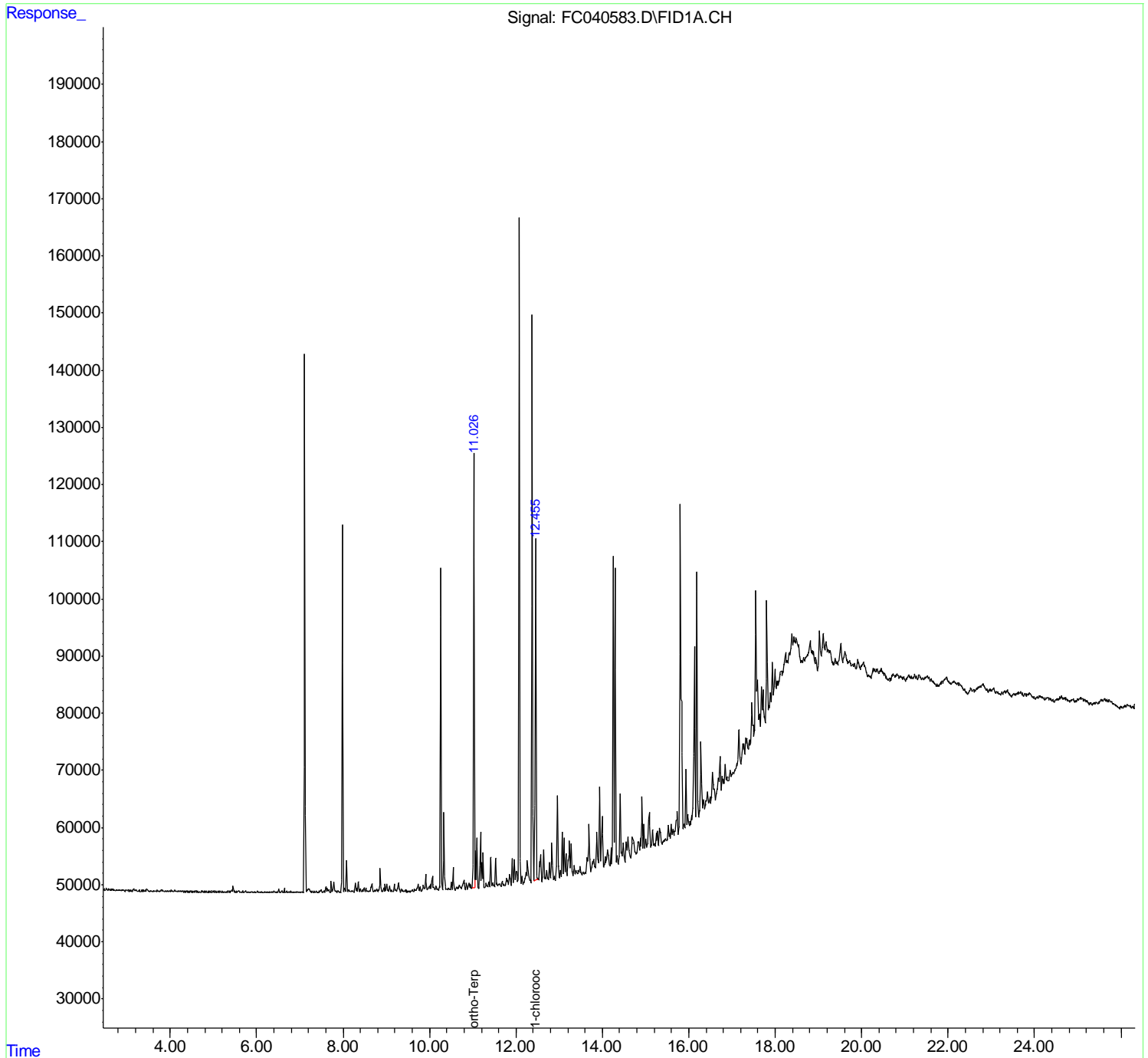
(f)=RT Delta > 1/2 Window

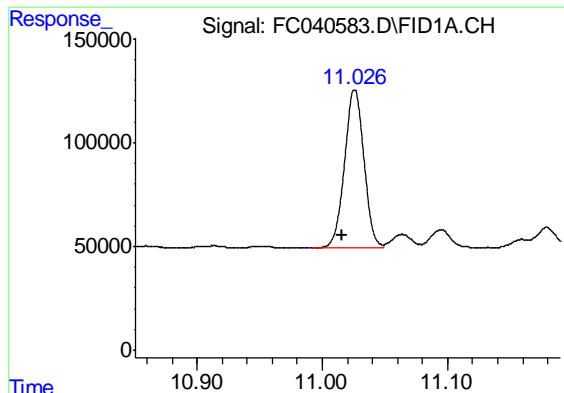
(m)=manual int.

Data Path : Z:\pestpcbsrv\HPCHEM1\FID\_C\Data\FC041219AL\  
 Data File : FC040583.D  
 Signal(s) : FID1A.CH  
 Acq On : 13 Apr 2019 9:14  
 Operator : AJ\SJ  
 Sample : K2373-01DL 5X  
 Misc :  
 ALS Vial : 34 Sample Multiplier: 1

Integration File: autoint1.e  
 Quant Time: Apr 15 00:34:57 2019  
 Quant Method : Z:\pestpcbsrv\HPCHEM1\FID\_C\Method\Alaphatic EPH 032319.M  
 Quant Title : GC Extractables  
 QLast Update : Sat Mar 23 13:38:33 2019  
 Response via : Initial Calibration  
 Integrator: ChemStation 6890 Scale Mode: Large solvent peaks clipped

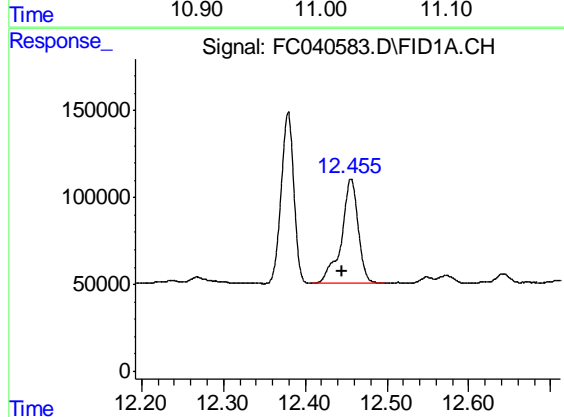
Volume Inj. : 1 ul  
 Signal Phase : Rxi-1ms  
 Signal Info : 20M x 0.18mm x 0.18um





#9 ortho-Terphenyl (SURR)

R.T.: 11.026 min  
Delta R.T.: 0.010 min  
Response: 815667  
Conc: 6.33 ug/ml



#12 1-chlorooctadecane (SURR)

R.T.: 12.456 min  
Delta R.T.: 0.012 min  
Response: 849519  
Conc: 8.60 ug/ml