

Data Path : Z:\pestpcbsrv\HPCHEM1\FID_C\Data\FC041321AL\
 Data File : FC053109.D
 Signal(s) : FID1A.CH
 Acq On : 13 Apr 2021 11:15
 Operator : DD\AJ
 Sample : PB135666BL
 Misc :
 ALS Vial : 3 Sample Multiplier: 1

Instrument :
 FID_C
 ClientSampleId :
 PB135666BL

Integration File: sample.E
 Quant Time: Apr 14 02:11:40 2021
 Quant Method : Z:\pestpcbsrv\HPCHEM1\FID_C\Method\Alaphatic EPH 040821.M
 Quant Title : GC Extractables
 QLast Update : Fri Apr 09 09:23:51 2021
 Response via : Initial Calibration
 Integrator: ChemStation 6890 Scale Mode: Large solvent peaks clipped

Volume Inj. : 1 ul
 Signal Phase : Rxi-1ms
 Signal Info : 20M x 0.18mm x 0.18um

Compound	R.T.	Response	Conc Units

System Monitoring Compounds			
12) S 1-chlorooctadecane (S...	12.996	5221417	45.190 ug/ml
Spiked Amount	50.000	Recovery	= 90.38%

Target Compounds

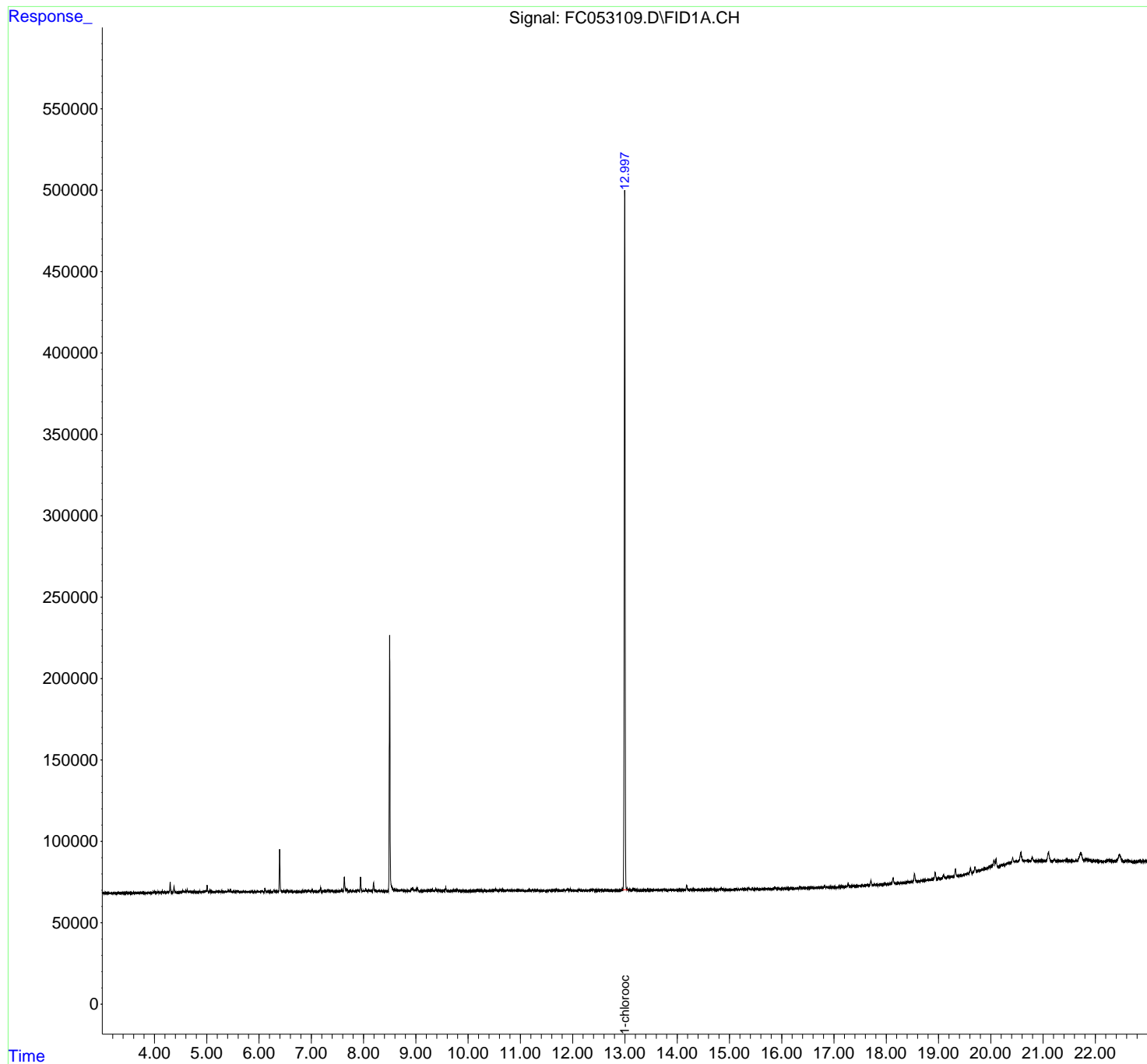
(f)=RT Delta > 1/2 Window (m)=manual int.

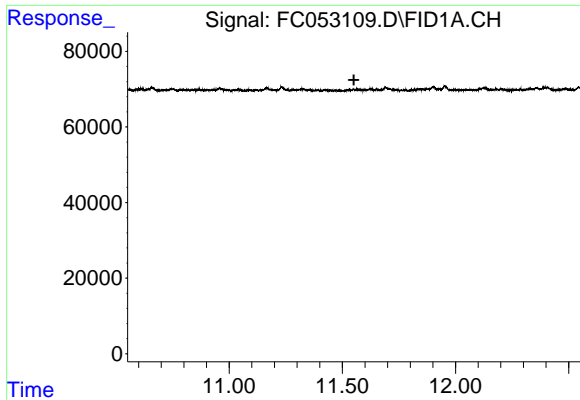
Data Path : Z:\pestpcbsrv\HPCHEM1\FID_C\Data\FC041321AL\
Data File : FC053109.D
Signal(s) : FID1A.CH
Acq On : 13 Apr 2021 11:15
Operator : DD\AJ
Sample : PB135666BL
Misc :
ALS Vial : 3 Sample Multiplier: 1

Instrument :
FID_C
ClientSampled :
PB135666BL

Integration File: sample.E
Quant Time: Apr 14 02:11:40 2021
Quant Method : Z:\pestpcbsrv\HPCHEM1\FID_C\Method\Alaphatic EPH 040821.M
Quant Title : GC Extractables
QLast Update : Fri Apr 09 09:23:51 2021
Response via : Initial Calibration
Integrator: ChemStation 6890 Scale Mode: Large solvent peaks clipped

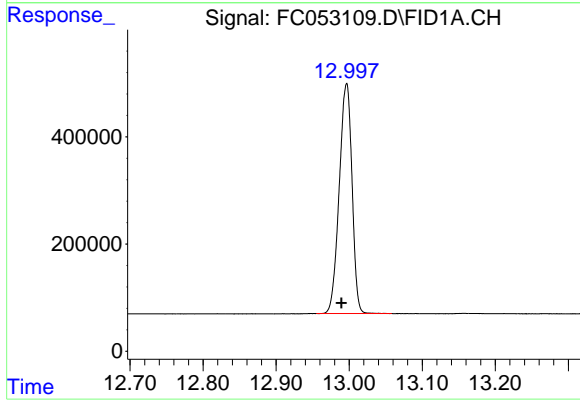
Volume Inj. : 1 ul
Signal Phase : Rxi-1ms
Signal Info : 20M x 0.18mm x 0.18um





#9 ortho-Terphenyl (SURR)
R.T.: 0.000 min
Exp R.T.: 11.551 min
Response: 0
Conc: N.D.

Instrument :
FID_C
ClientSampled :
PB135666BL



#12 1-chlorooctadecane (SURR)
R.T.: 12.996 min
Delta R.T.: 0.007 min
Response: 5221417
Conc: 45.19 ug/ml