

Data Path : Z:\pestpcbsrv\HPCHEM1\FID_C\Data\FC041423AL\
 Data File : FC063387.D
 Signal(s) : FID1A.ch
 Acq On : 14 Apr 2023 22:09
 Operator : YP/AJ
 Sample : 02341-02
 Misc :
 ALS Vial : 14 Sample Multiplier: 1

Instrument :
 FID_C
 ClientSampleId :
 PH1-BOT-2

Integration File: autoint1.e
 Quant Time: Apr 15 02:43:41 2023
 Quant Method : Z:\pestpcbsrv\HPCHEM1\FID_C\Method\Aliphatic EPH 040523.M
 Quant Title : GC Extractables
 QLast Update : Wed Apr 05 07:22:46 2023
 Response via : Initial Calibration
 Integrator: ChemStation

Volume Inj. : 1 ul
 Signal Phase : Rxi-1ms
 Signal Info : 20M x 0.18mm x 0.18um

Compound	R.T.	Response	Conc Units
System Monitoring Compounds			
12) S 1-chlorooctadecane (S...	12.971	5266660	47.599 ug/ml
Spiked Amount	50.000	Recovery	= 95.20%

Target Compounds

(f)=RT Delta > 1/2 Window

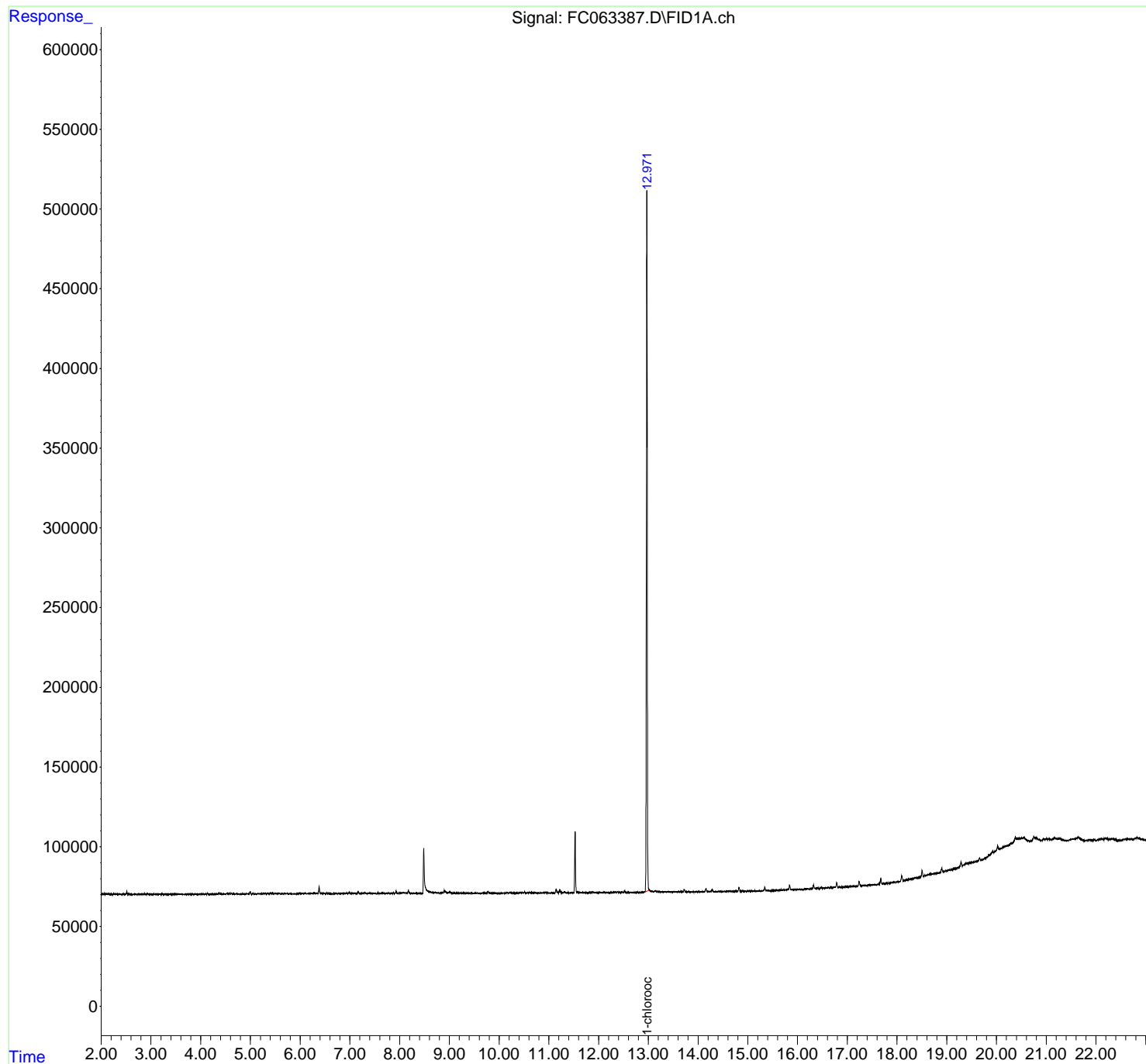
(m)=manual int.

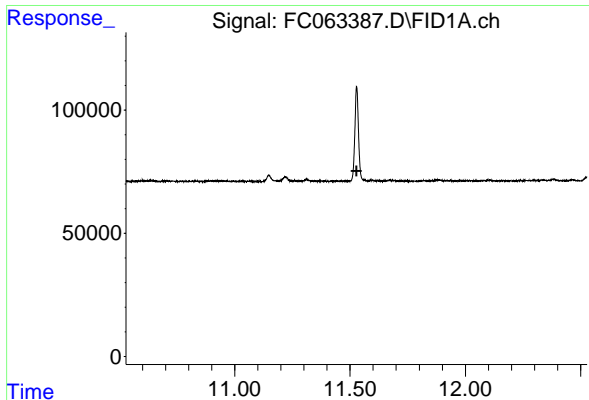
Data Path : Z:\pestpcbsrv\HPCHEM1\FID_C\Data\FC041423AL\
Data File : FC063387.D
Signal(s) : FID1A.ch
Acq On : 14 Apr 2023 22:09
Operator : YP/AJ
Sample : 02341-02
Misc :
ALS Vial : 14 Sample Multiplier: 1

Instrument :
FID_C
ClientSampleId :
PH1-BOT-2

Integration File: autoint1.e
Quant Time: Apr 15 02:43:41 2023
Quant Method : Z:\pestpcbsrv\HPCHEM1\FID_C\Method\Aliphatic EPH 040523.M
Quant Title : GC Extractables
QLast Update : Wed Apr 05 07:22:46 2023
Response via : Initial Calibration
Integrator: ChemStation

Volume Inj. : 1 ul
Signal Phase : Rxi-1ms
Signal Info : 20M x 0.18mm x 0.18um

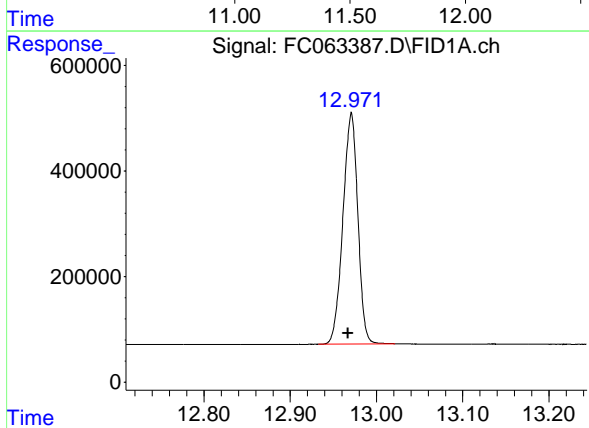




#9 ortho-Terphenyl (SURR)

R.T.: 0.000 min
Exp R.T.: 11.528 min
Response: 0
Conc: N.D.

Instrument :
FID_C
ClientSampleId :
PH1-BOT-2



#12 1-chlorooctadecane (SURR)

R.T.: 12.971 min
Delta R.T.: 0.004 min
Response: 5266660
Conc: 47.60 ug/ml