

Data Path : Z:\pestpcbsrv\HPCHEM1\FID_C\Data\FC041519AL\
 Data File : FC040603.D
 Signal(s) : FID1A.CH
 Acq On : 15 Apr 2019 17:42
 Operator : AJ\SJ
 Sample : K2390-01
 Misc :
 ALS Vial : 12 Sample Multiplier: 1

Integration File: autoint1.e
 Quant Time: Apr 16 05:06:35 2019
 Quant Method : Z:\pestpcbsrv\HPCHEM1\FID_C\Method\Alaphatic EPH 032319.M
 Quant Title : GC Extractables
 QLast Update : Sat Mar 23 13:38:33 2019
 Response via : Initial Calibration
 Integrator: ChemStation 6890 Scale Mode: Large solvent peaks clipped

Volume Inj. : 1 ul
 Signal Phase : Rxi-1ms
 Signal Info : 20M x 0.18mm x 0.18um

Compound	R.T.	Response	Conc Units

System Monitoring Compounds			
12) S 1-chlorooctadecane (S...	12.461	3092590	31.308 ug/ml
Spiked Amount	50.000	Recovery	= 62.62%

Target Compounds

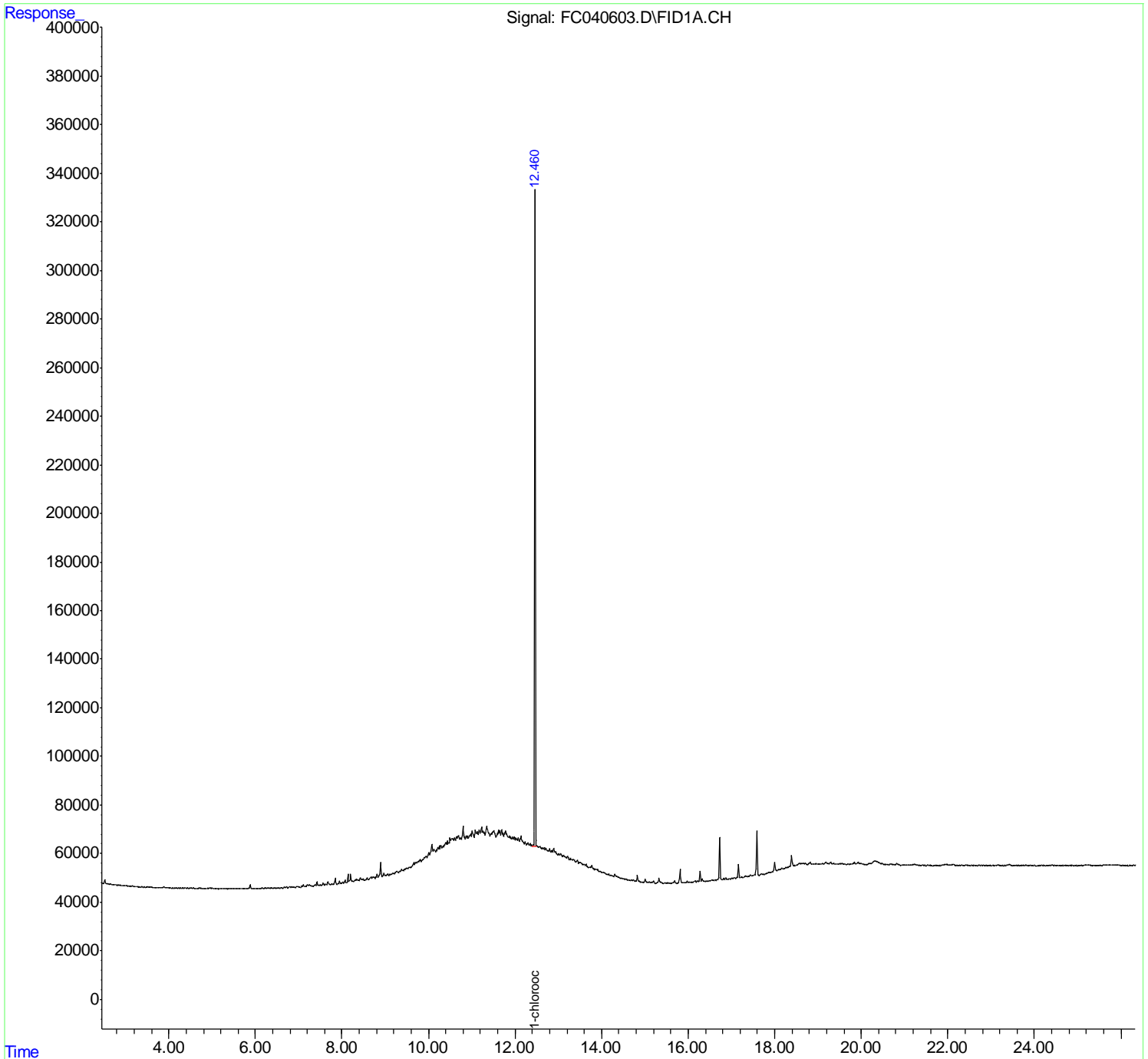
(f)=RT Delta > 1/2 Window

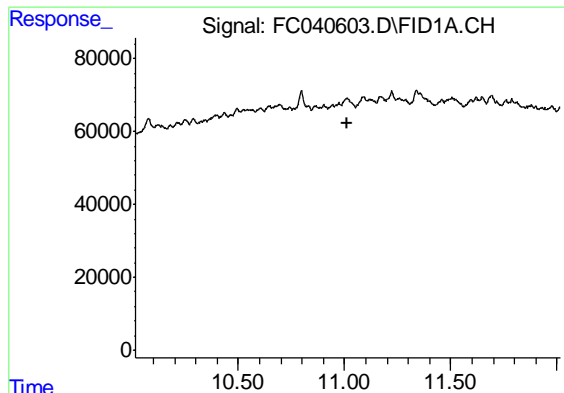
(m)=manual int.

Data Path : Z:\pestpcbsrv\HPCHEM1\FID_C\Data\FC041519AL\
Data File : FC040603.D
Signal(s) : FID1A.CH
Acq On : 15 Apr 2019 17:42
Operator : AJ\SJ
Sample : K2390-01
Misc :
ALS Vial : 12 Sample Multiplier: 1

Integration File: autoint1.e
Quant Time: Apr 16 05:06:35 2019
Quant Method : Z:\pestpcbsrv\HPCHEM1\FID_C\Method\Alaphatic EPH 032319.M
Quant Title : GC Extractables
QLast Update : Sat Mar 23 13:38:33 2019
Response via : Initial Calibration
Integrator: ChemStation 6890 Scale Mode: Large solvent peaks clipped

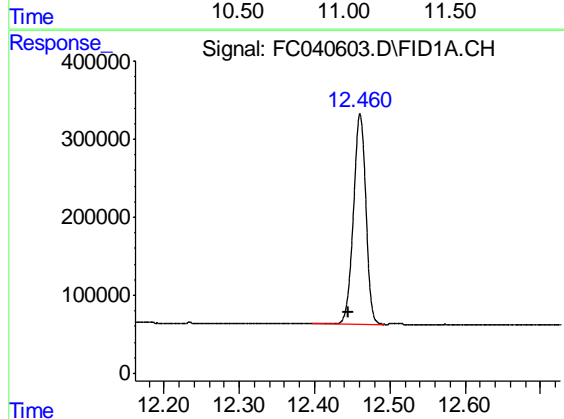
Volume Inj. : 1 ul
Signal Phase : Rxi-1ms
Signal Info : 20M x 0.18mm x 0.18um





#9 ortho-Terphenyl (SURR)

R.T.: 0.000 min
Exp R.T. : 11.016 min
Response: 0
Conc: N.D.



#12 1-chlorooctadecane (SURR)

R.T.: 12.461 min
Delta R.T.: 0.016 min
Response: 3092590
Conc: 31.31 ug/ml