

Data Path : Z:\pestpcbsrv\HPCHEM1\FID\_C\Data\FC041524AL\  
 Data File : FC066203.D  
 Signal(s) : FID1A.ch  
 Acq On : 15 Apr 2024 20:07  
 Operator : YP/AJ  
 Sample : 20 PPM ALIPHATIC HC STD3  
 Misc :  
 ALS Vial : 8 Sample Multiplier: 1

Integration File: autoint1.e  
 Quant Time: Apr 16 08:11:47 2024  
 Quant Method : Z:\pestpcbsrv\HPCHEM1\FID\_C\Method\Aliphatic EPH 041524.M  
 Quant Title : GC Extractables  
 QLast Update : Tue Apr 16 08:09:45 2024  
 Response via : Initial Calibration  
 Integrator: ChemStation

Volume Inj. : 1 ul  
 Signal Phase : Rxi-1ms  
 Signal Info : 20M x 0.18mm x 0.18um

Compound	R.T.	Response	Conc Units
-----			
System Monitoring Compounds			
9) S ortho-Terphenyl (SURR)	11.573	2763275	20.000 ug/ml
Spiked Amount	50.000	Recovery	= 40.00%
12) S 1-chlorooctadecane (S...	13.013	1964122	20.000 ug/ml
Spiked Amount	50.000	Recovery	= 40.00%
Target Compounds			
1) T n-Nonane (C9)	3.321	2571364	20.000 ug/ml
2) T n-Decane (C10)	4.393	2599709	20.000 ug/ml
3) T A~Naphthalene (C11.7)	5.977	2865433	20.000 ug/ml
4) T n-Dodecane (C12)	6.415	2576003	20.000 ug/ml
5) T A~2-methylnaphthalene...	7.035	2744904	20.000 ug/ml
6) T n-Tetradecane (C14)	8.212	2505778	20.000 ug/ml
7) T n-Hexadecane (C16)	9.815	2544027	20.000 ug/ml
8) T n-Octadecane (C18)	11.259	2551353	20.000 ug/ml
10) T n-Eicosane (C20)	12.569	2413339	20.000 ug/ml
11) T n-Heneicosane (C21)	13.182	2360549	20.000 ug/ml
13) T n-Docosane (C22)	13.769	2338757	20.000 ug/ml
14) T n-Tetracosane (C24)	14.873	2317246	20.000 ug/ml
15) T n-Hexacosane (C26)	15.895	2269933	20.000 ug/ml
16) T n-Octacosane (C28)	16.846	2224080	20.000 ug/ml
17) T n-Tricontane (C30)	17.735	2268116	20.000 ug/ml
18) T n-Dotriacontane (C32)	18.568	2246609	20.000 ug/ml
19) T n-Tetratriacontane (C34)	19.354	2160242	20.000 ug/ml
20) T n-Hexatriacontane (C36)	20.094	2008939	20.000 ug/ml
21) T n-Octatriacontane (C38)	20.834	1932051	20.000 ug/ml
22) T n-Tetracontane (C40)	21.752	1850017	20.000 ug/ml
-----			

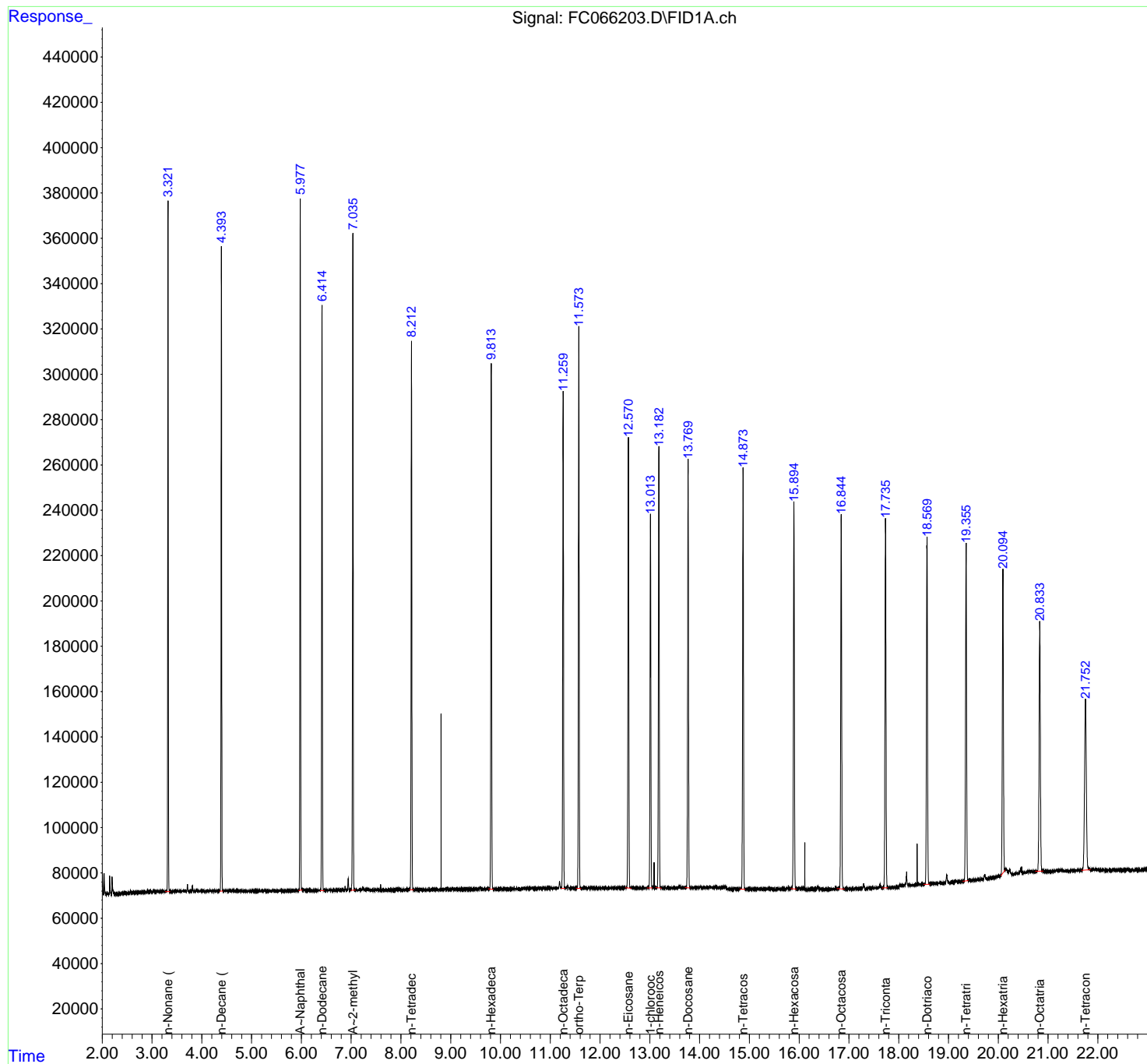
(f)=RT Delta > 1/2 Window

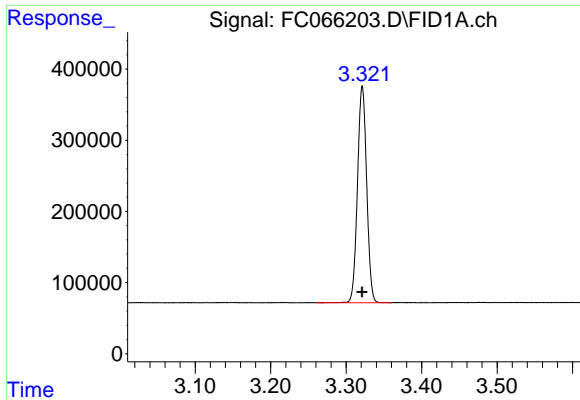
(m)=manual int.

Data Path : Z:\pestpcbsrv\HPCHEM1\FID\_C\Data\FC041524AL\  
Data File : FC066203.D  
Signal(s) : FID1A.ch  
Acq On : 15 Apr 2024 20:07  
Operator : YP/AJ  
Sample : 20 PPM ALIPHATIC HC STD3  
Misc :  
ALS Vial : 8 Sample Multiplier: 1

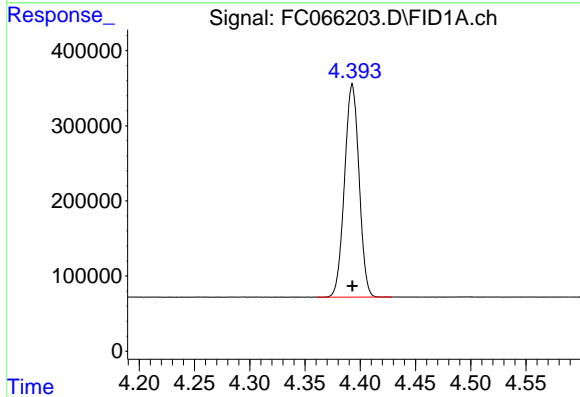
Integration File: autoint1.e  
Quant Time: Apr 16 08:11:47 2024  
Quant Method : Z:\pestpcbsrv\HPCHEM1\FID\_C\Method\Aliphatic EPH 041524.M  
Quant Title : GC Extractables  
QLast Update : Tue Apr 16 08:09:45 2024  
Response via : Initial Calibration  
Integrator: ChemStation

Volume Inj. : 1 ul  
Signal Phase : Rxi-1ms  
Signal Info : 20M x 0.18mm x 0.18um

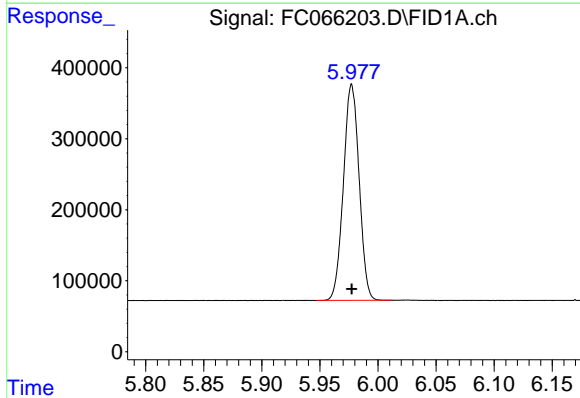




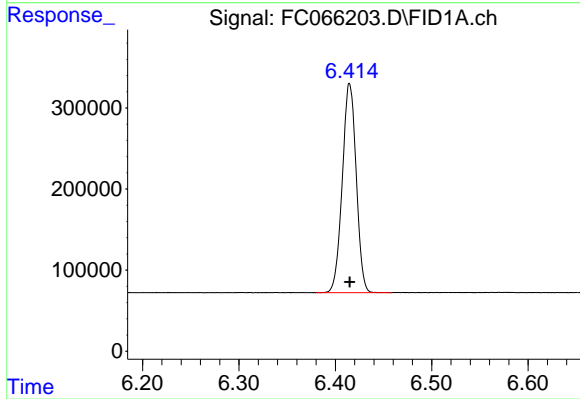
#1 n-Nonane (C9)  
R.T.: 3.321 min  
Delta R.T.: 0.000 min  
Response: 2571364  
Conc: 20.00 ug/ml



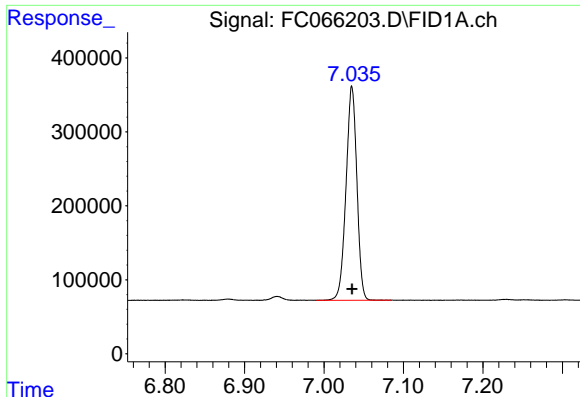
#2 n-Decane (C10)  
R.T.: 4.393 min  
Delta R.T.: 0.000 min  
Response: 2599709  
Conc: 20.00 ug/ml



#3 A~Naphthalene (C11.7)  
R.T.: 5.977 min  
Delta R.T.: 0.000 min  
Response: 2865433  
Conc: 20.00 ug/ml

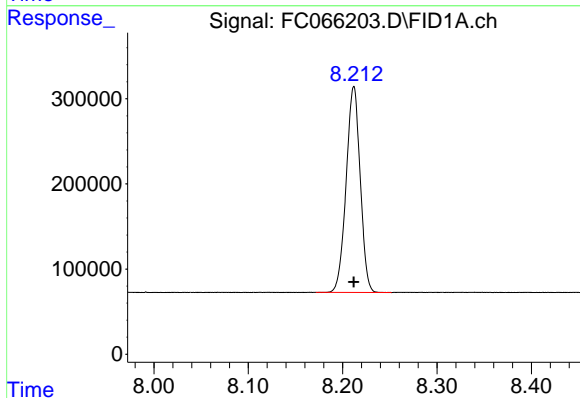


#4 n-Dodecane (C12)  
R.T.: 6.415 min  
Delta R.T.: 0.000 min  
Response: 2576003  
Conc: 20.00 ug/ml



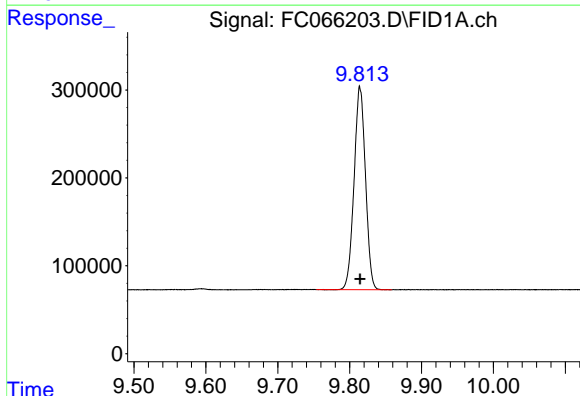
#5 A~2-methylnaphthalene (C12.89)

R.T.: 7.035 min  
Delta R.T.: 0.000 min  
Response: 2744904  
Conc: 20.00 ug/ml



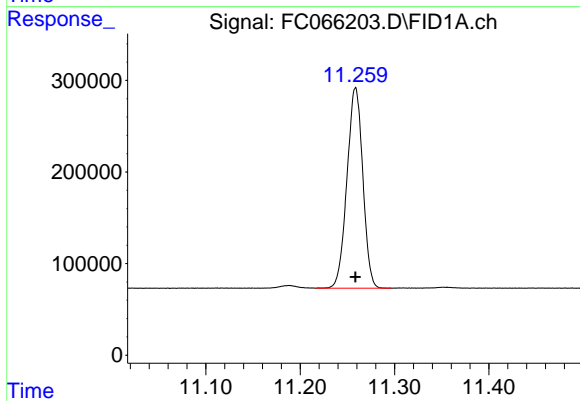
#6 n-Tetradecane (C14)

R.T.: 8.212 min  
Delta R.T.: 0.000 min  
Response: 2505778  
Conc: 20.00 ug/ml



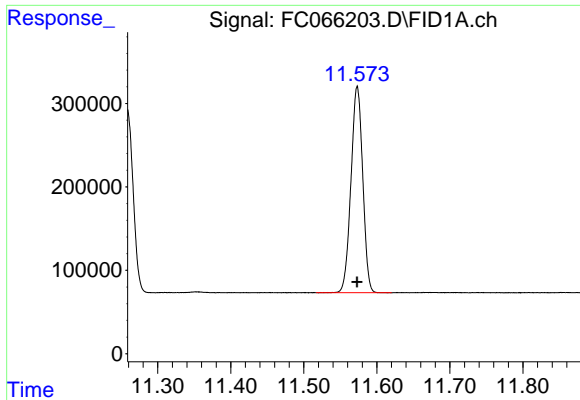
#7 n-Hexadecane (C16)

R.T.: 9.815 min  
Delta R.T.: 0.000 min  
Response: 2544027  
Conc: 20.00 ug/ml



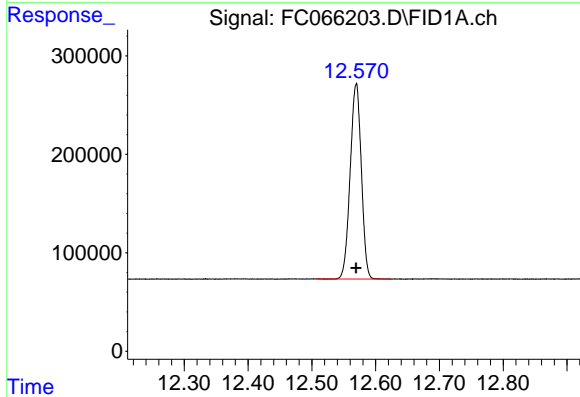
#8 n-Octadecane (C18)

R.T.: 11.259 min  
Delta R.T.: 0.000 min  
Response: 2551353  
Conc: 20.00 ug/ml



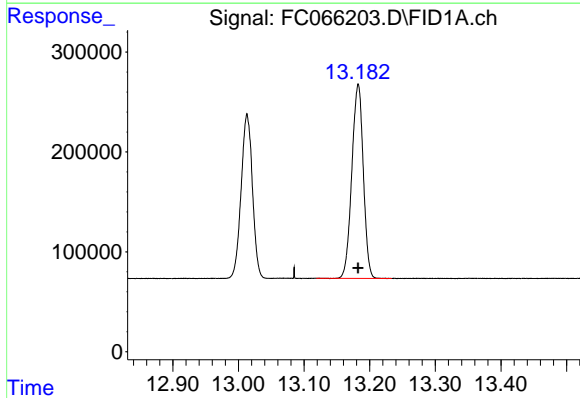
#9 ortho-Terphenyl (SURR)

R.T.: 11.573 min  
Delta R.T.: 0.000 min  
Response: 2763275  
Conc: 20.00 ug/ml



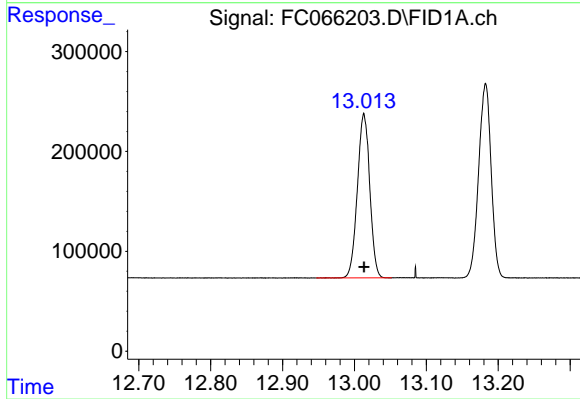
#10 n-Eicosane (C20)

R.T.: 12.569 min  
Delta R.T.: 0.000 min  
Response: 2413339  
Conc: 20.00 ug/ml



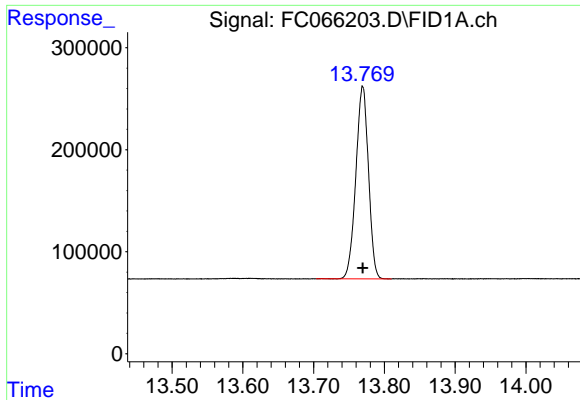
#11 n-Heneicosane (C21)

R.T.: 13.182 min  
Delta R.T.: 0.000 min  
Response: 2360549  
Conc: 20.00 ug/ml

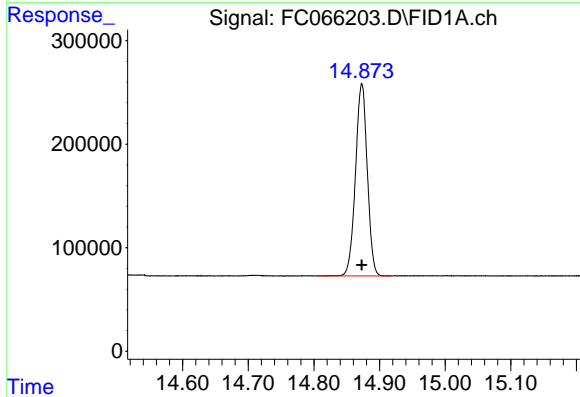


#12 1-chlorooctadecane (SURR)

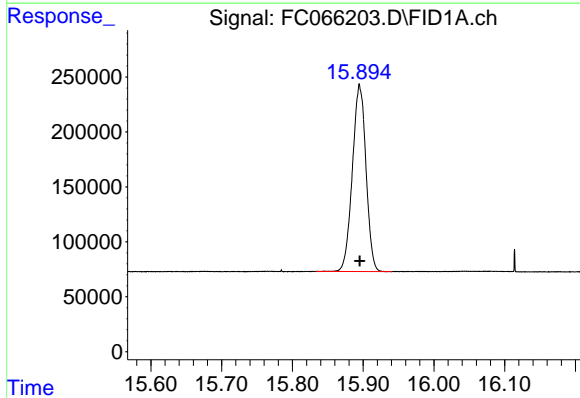
R.T.: 13.013 min  
Delta R.T.: 0.000 min  
Response: 1964122  
Conc: 20.00 ug/ml



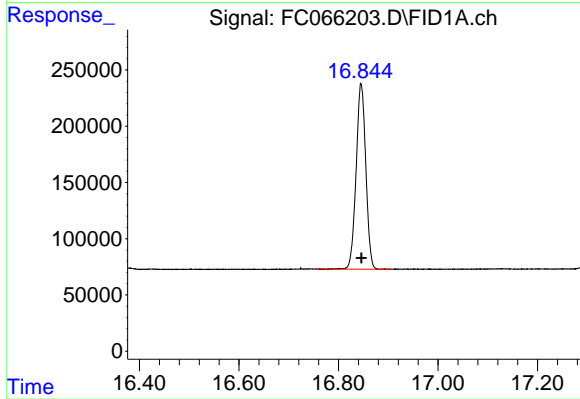
#13 n-Docosane (C22)  
R.T.: 13.769 min  
Delta R.T.: 0.000 min  
Response: 2338757  
Conc: 20.00 ug/ml



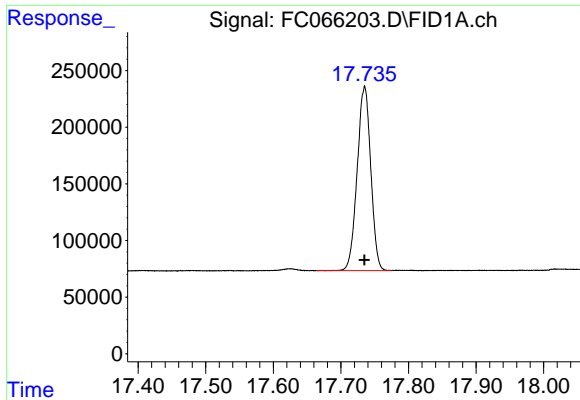
#14 n-Tetracosane (C24)  
R.T.: 14.873 min  
Delta R.T.: 0.000 min  
Response: 2317246  
Conc: 20.00 ug/ml



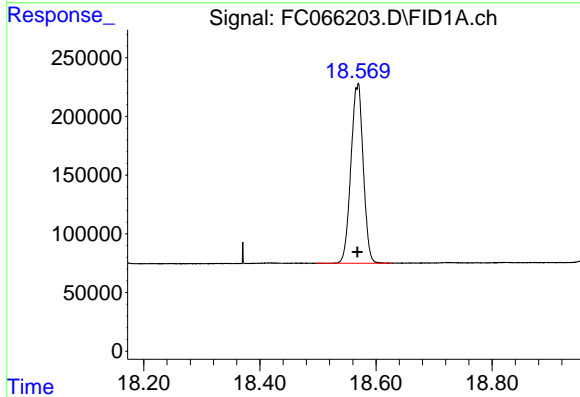
#15 n-Hexacosane (C26)  
R.T.: 15.895 min  
Delta R.T.: 0.000 min  
Response: 2269933  
Conc: 20.00 ug/ml



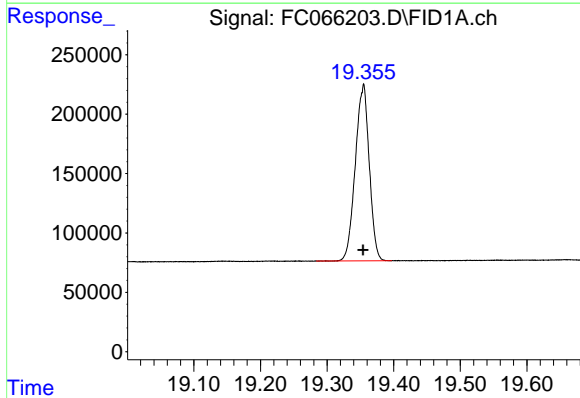
#16 n-Octacosane (C28)  
R.T.: 16.846 min  
Delta R.T.: 0.000 min  
Response: 2224080  
Conc: 20.00 ug/ml



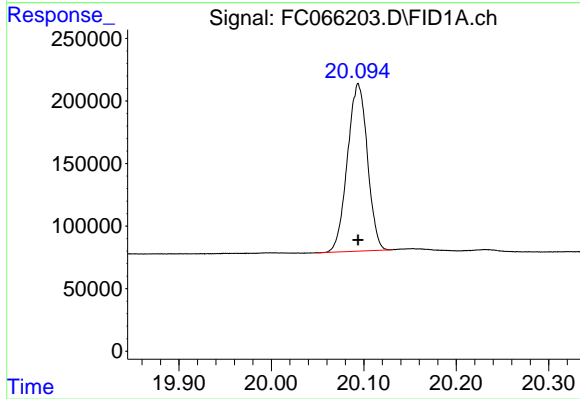
#17 n-Tricontane (C30)  
R.T.: 17.735 min  
Delta R.T.: 0.000 min  
Response: 2268116  
Conc: 20.00 ug/ml



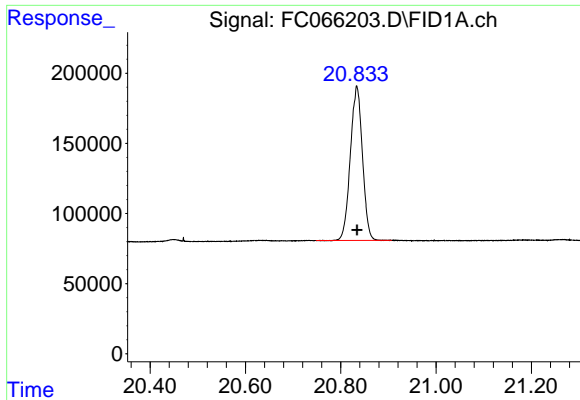
#18 n-Dotriacontane (C32)  
R.T.: 18.568 min  
Delta R.T.: 0.000 min  
Response: 2246609  
Conc: 20.00 ug/ml



#19 n-Tetratriacontane (C34)  
R.T.: 19.354 min  
Delta R.T.: 0.000 min  
Response: 2160242  
Conc: 20.00 ug/ml

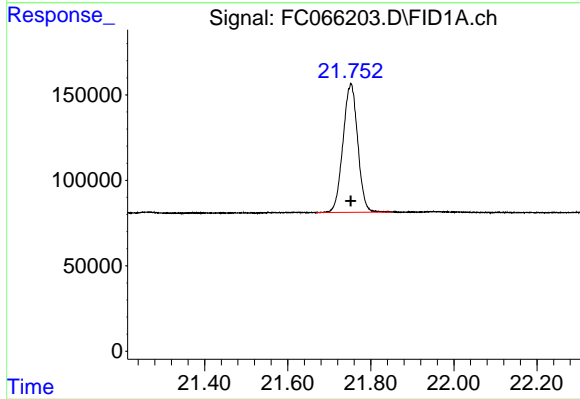


#20 n-Hexatriacontane (C36)  
R.T.: 20.094 min  
Delta R.T.: 0.000 min  
Response: 2008939  
Conc: 20.00 ug/ml



#21 n-Octatriacontane (C38)

R.T.: 20.834 min  
Delta R.T.: 0.000 min  
Response: 1932051  
Conc: 20.00 ug/ml



#22 n-Tetracontane (C40)

R.T.: 21.752 min  
Delta R.T.: 0.000 min  
Response: 1850017  
Conc: 20.00 ug/ml