

Data Path : Z:\pestpcbsrv\HPCHEM1\FID_C\Data\FC041621AL\
 Data File : FC053241.D
 Signal(s) : FID1A.CH
 Acq On : 17 Apr 2021 1:54
 Operator : DD\AJ
 Sample : 20 PPM ALIPHATIC HC STD
 Misc :
 ALS Vial : 2 Sample Multiplier: 1

Instrument :
 FID_C
 ClientSampleId :
 20 PPM ALIPHATIC HC STD

Manual Integrations
 APPROVED

Ankita
 4/20/2021 9:13:22 AM

Integration File: sample.E
 Quant Time: Apr 17 05:12:20 2021
 Quant Method : Z:\pestpcbsrv\HPCHEM1\FID_C\Method\Aliphatic EPH 040821.M
 Quant Title : GC Extractables
 QLast Update : Fri Apr 09 09:23:51 2021
 Response via : Initial Calibration
 Integrator: ChemStation 6890 Scale Mode: Large solvent peaks clipped

Volume Inj. : 1 ul
 Signal Phase : Rxi-1ms
 Signal Info : 20M x 0.18mm x 0.18um

Compound	R.T.	Response	Conc Units

System Monitoring Compounds			
9) S ortho-Terphenyl (SURR)	11.558	2525204	17.479 ug/ml
Spiked Amount	50.000	Recovery	= 34.96%
12) S 1-chlorooctadecane (S...	12.999	1979010	17.128 ug/ml
Spiked Amount	50.000	Recovery	= 34.26%
Target Compounds			
1) T n-Nonane (C9)	3.308	2438331	19.482 ug/ml
2) T n-Decane (C10)	4.375	2463847	19.571 ug/ml
3) T A~Naphthalene (C11.7)	5.961	2697723	19.366 ug/ml
4) T n-Dodecane (C12)	6.396	2527261	19.733 ug/ml
5) T A~2-methylnaphthalene...	7.020	2744321	19.414 ug/ml
6) T n-Tetradecane (C14)	8.195	2507275	19.487 ug/ml
7) T n-Hexadecane (C16)	9.798	2435922	19.052 ug/ml
8) T n-Octadecane (C18)	11.242	2469242	18.258 ug/ml
10) T n-Eicosane (C20)	12.553	2393875	17.428 ug/ml
11) T n-Heneicosane (C21)	13.166	2344057	17.060 ug/ml
13) T n-Docosane (C22)	13.753	2284679	16.575 ug/ml
14) T n-Tetracosane (C24)	14.858	2161228	15.675 ug/ml
15) T n-Hexacosane (C26)	15.879	2042576	15.063 ug/ml
16) T n-Octacosane (C28)	16.830	1970577	14.784 ug/ml
17) T n-Tricontane (C30)	17.719	1933164	15.063 ug/ml
18) T n-Dotriacontane (C32)	18.552	1899785	15.902 ug/ml
19) T n-Tetratriacontane (C34)	19.337	1882353	16.996 ug/ml
20) T n-Hexatriacontane (C36)	20.077	1834581	18.180 ug/ml
21) T n-Octatriacontane (C38)	20.810	1814307	20.365 ug/mlm
22) T n-Tetracontane (C40)	21.715	1951485	24.377 ug/ml

(f)=RT Delta > 1/2 Window

(m)=manual int.

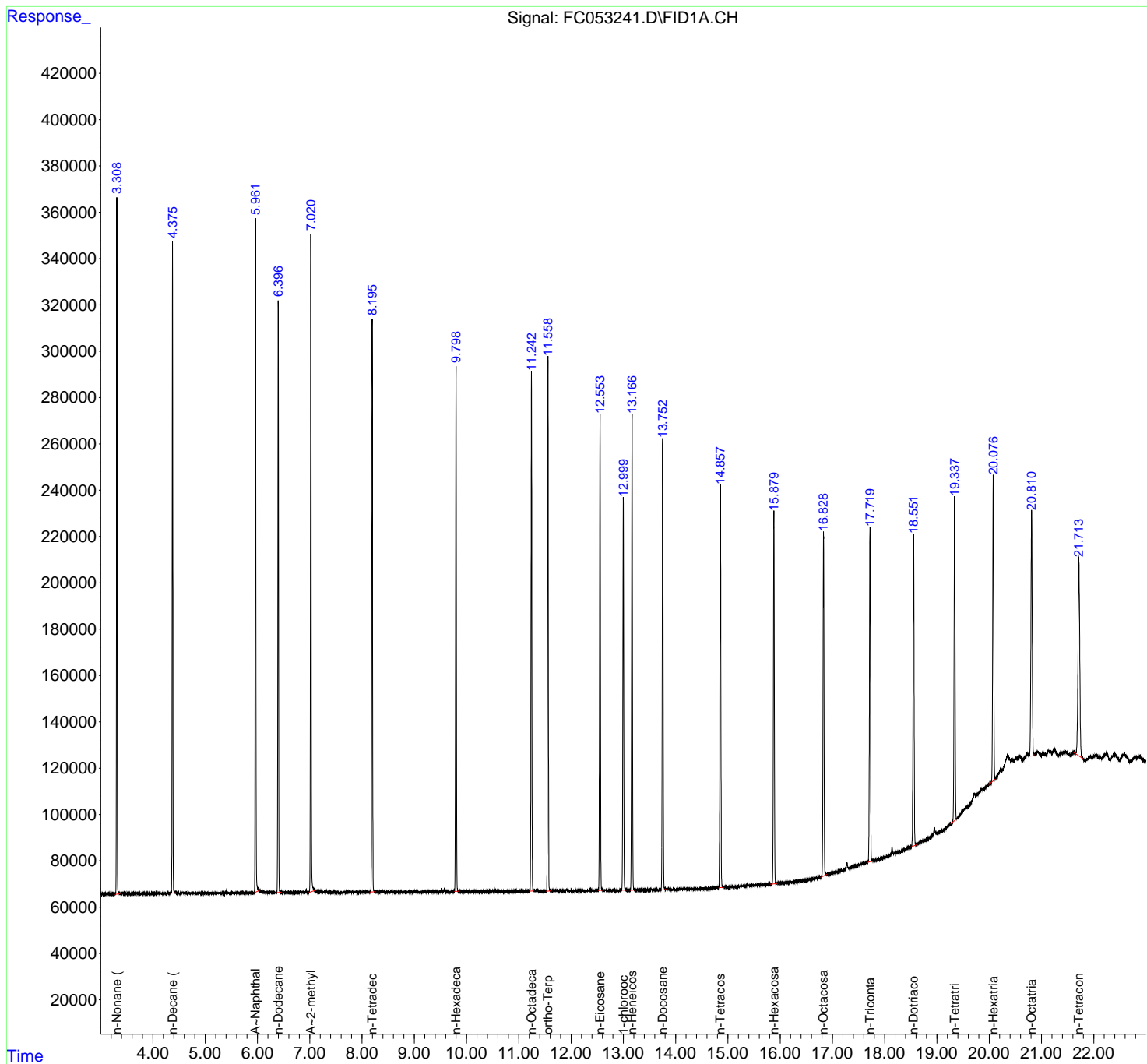
Data Path : Z:\pestpcbsrv\HPCHEM1\FID_C\Data\FC041621AL\
 Data File : FC053241.D
 Signal(s) : FID1A.CH
 Acq On : 17 Apr 2021 1:54
 Operator : DD\AJ
 Sample : 20 PPM ALIPHATIC HC STD
 Misc :
 ALS Vial : 2 Sample Multiplier: 1

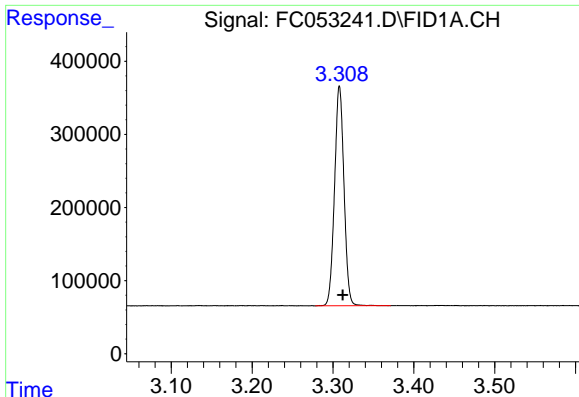
Instrument :
 FID_C
Client Sampled :
 20 PPM ALIPHATIC HC STD

Manual Integrations
APPROVED
 Ankita
 4/20/2021 9:13:22 AM

Integration File: sample.E
 Quant Time: Apr 17 05:12:20 2021
 Quant Method : Z:\pestpcbsrv\HPCHEM1\FID_C\Method\Aliphatic EPH 040821.M
 Quant Title : GC Extractables
 QLast Update : Fri Apr 09 09:23:51 2021
 Response via : Initial Calibration
 Integrator: ChemStation 6890 Scale Mode: Large solvent peaks clipped

Volume Inj. : 1 ul
 Signal Phase : Rxi-1ms
 Signal Info : 20M x 0.18mm x 0.18um





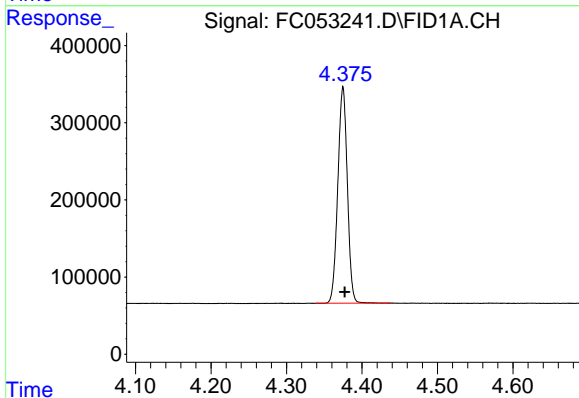
#1 n-Nonane (C9)

R.T.: 3.308 min
 Delta R.T.: -0.004 min
 Response: 2438331
 Conc: 19.48 ug/ml

Instrument :
 FID_C
 ClientSampled :
 20 PPM ALIPHATIC HC STD

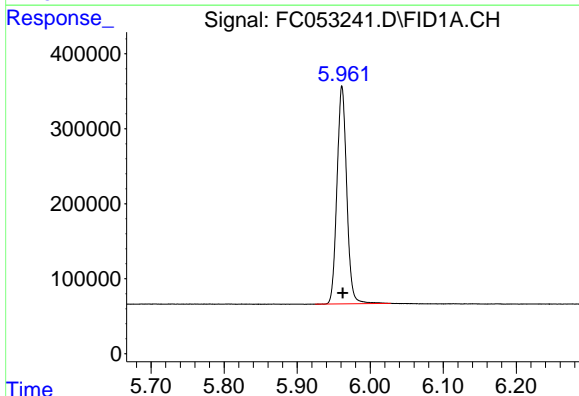
Manual Integrations
 APPROVED

Ankita
 4/20/2021 9:13:22 AM



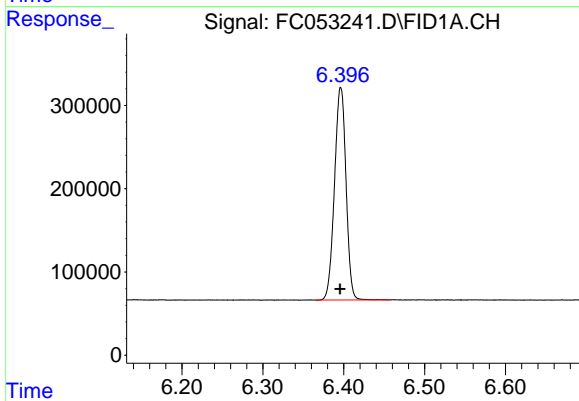
#2 n-Decane (C10)

R.T.: 4.375 min
 Delta R.T.: -0.003 min
 Response: 2463847
 Conc: 19.57 ug/ml



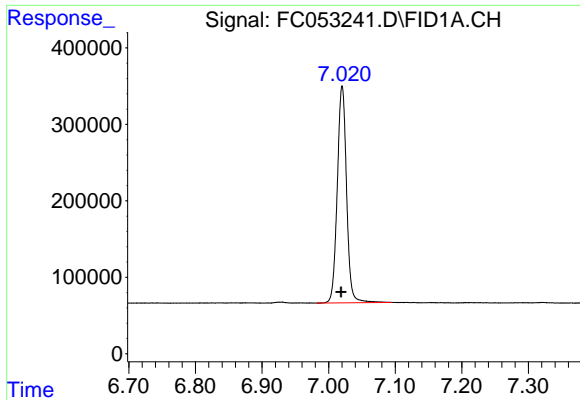
#3 A~Naphthalene (C11.7)

R.T.: 5.961 min
 Delta R.T.: 0.000 min
 Response: 2697723
 Conc: 19.37 ug/ml



#4 n-Dodecane (C12)

R.T.: 6.396 min
 Delta R.T.: 0.000 min
 Response: 2527261
 Conc: 19.73 ug/ml

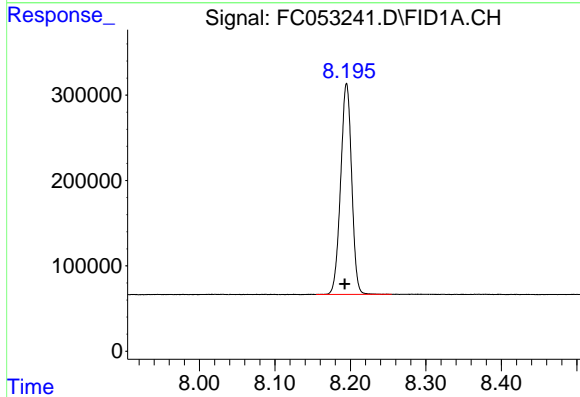


#5 A~2-methylnaphthalene (C12.89)

R.T.: 7.020 min
 Delta R.T.: 0.001 min
 Response: 2744321
 Conc: 19.41 ug/ml

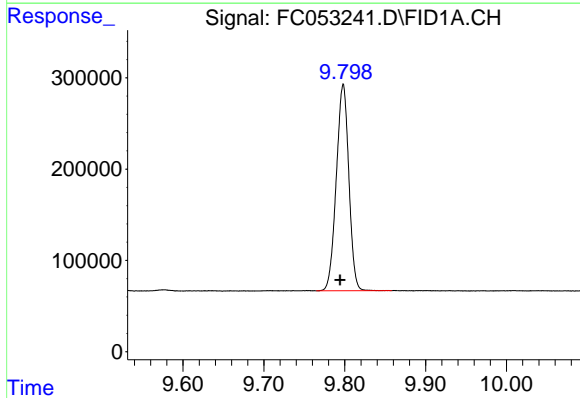
Instrument :
 FID_C
ClientSampled :
 20 PPM ALIPHATIC HC STD

Manual Integrations
APPROVED
 Ankita
 4/20/2021 9:13:22 AM



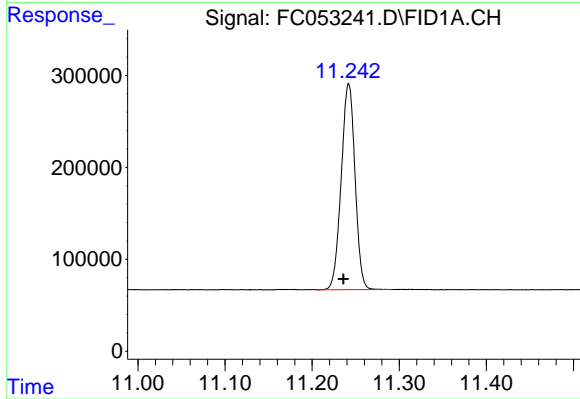
#6 n-Tetradecane (C14)

R.T.: 8.195 min
 Delta R.T.: 0.003 min
 Response: 2507275
 Conc: 19.49 ug/ml



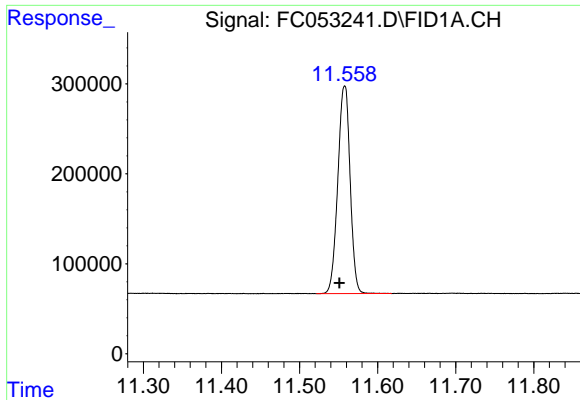
#7 n-Hexadecane (C16)

R.T.: 9.798 min
 Delta R.T.: 0.004 min
 Response: 2435922
 Conc: 19.05 ug/ml



#8 n-Octadecane (C18)

R.T.: 11.242 min
 Delta R.T.: 0.006 min
 Response: 2469242
 Conc: 18.26 ug/ml

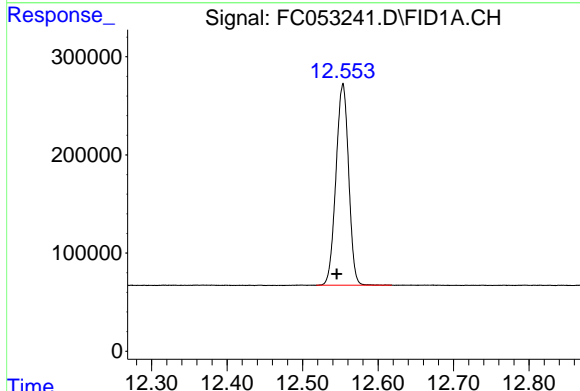


#9 ortho-Terphenyl (SURR)

R.T.: 11.558 min
 Delta R.T.: 0.006 min
 Response: 2525204
 Conc: 17.48 ug/ml

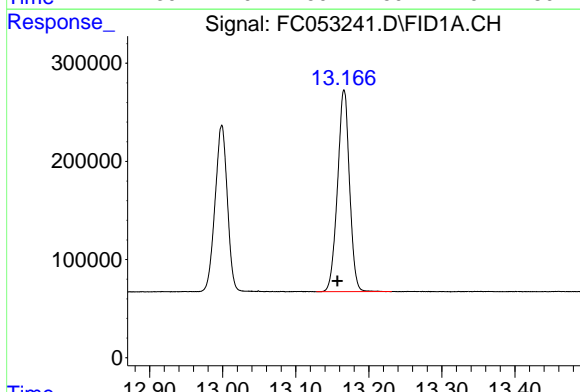
Instrument :
 FID_C
ClientSampled :
 20 PPM ALIPHATIC HC STD

Manual Integrations
APPROVED
 Ankita
 4/20/2021 9:13:22 AM



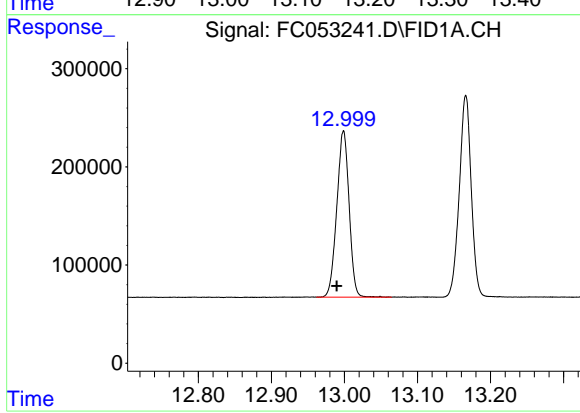
#10 n-Eicosane (C20)

R.T.: 12.553 min
 Delta R.T.: 0.008 min
 Response: 2393875
 Conc: 17.43 ug/ml



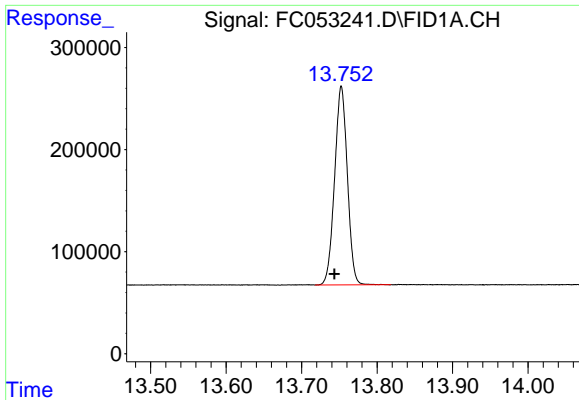
#11 n-Heneicosane (C21)

R.T.: 13.166 min
 Delta R.T.: 0.009 min
 Response: 2344057
 Conc: 17.06 ug/ml



#12 1-chlorooctadecane (SURR)

R.T.: 12.999 min
 Delta R.T.: 0.009 min
 Response: 1979010
 Conc: 17.13 ug/ml



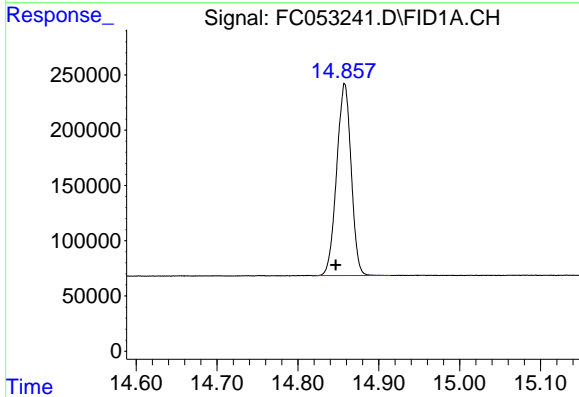
#13 n-Docosane (C22)

R.T.: 13.753 min
 Delta R.T.: 0.009 min
 Response: 2284679
 Conc: 16.57 ug/ml

Instrument :
 FID_C
 ClientSampleId :
 20 PPM ALIPHATIC HC STD

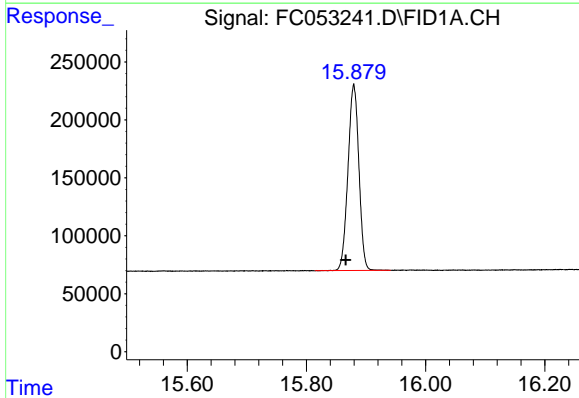
Manual Integrations
 APPROVED

Ankita
 4/20/2021 9:13:22 AM



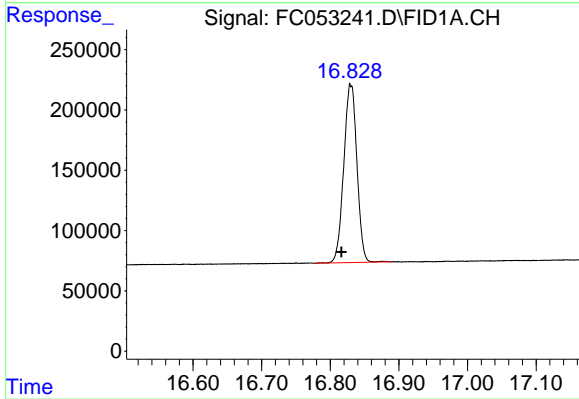
#14 n-Tetracosane (C24)

R.T.: 14.858 min
 Delta R.T.: 0.011 min
 Response: 2161228
 Conc: 15.67 ug/ml



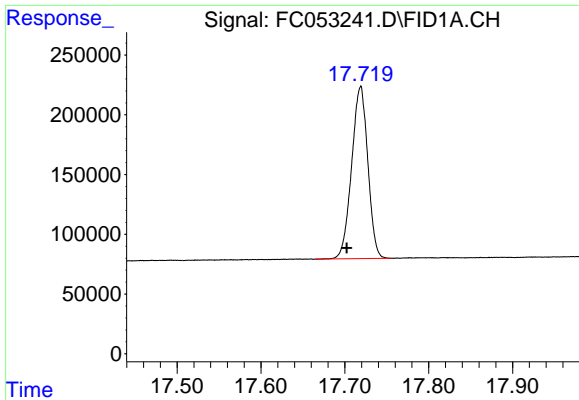
#15 n-Hexacosane (C26)

R.T.: 15.879 min
 Delta R.T.: 0.013 min
 Response: 2042576
 Conc: 15.06 ug/ml



#16 n-Octacosane (C28)

R.T.: 16.830 min
 Delta R.T.: 0.014 min
 Response: 1970577
 Conc: 14.78 ug/ml

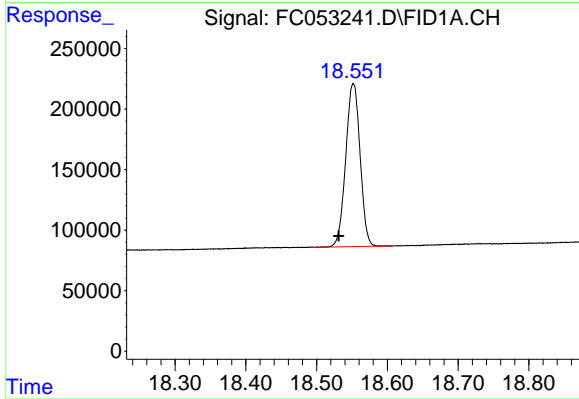


#17 n-Tricontane (C30)
R.T.: 17.719 min
Delta R.T.: 0.016 min
Response: 1933164
Conc: 15.06 ug/ml

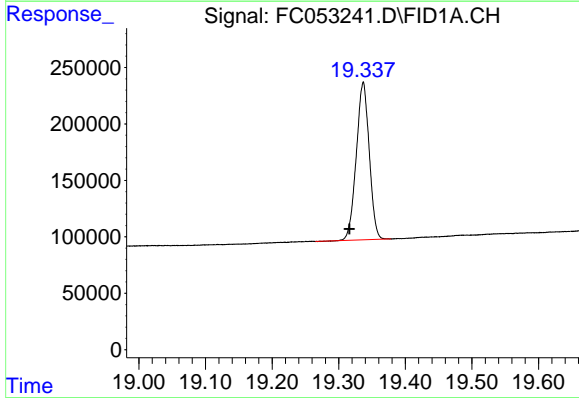
Instrument :
FID_C
ClientSampleId :
20 PPM ALIPHATIC HC STD

Manual Integrations
APPROVED

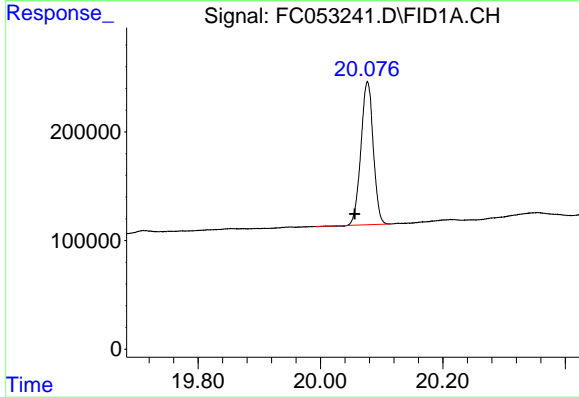
Ankita
4/20/2021 9:13:22 AM



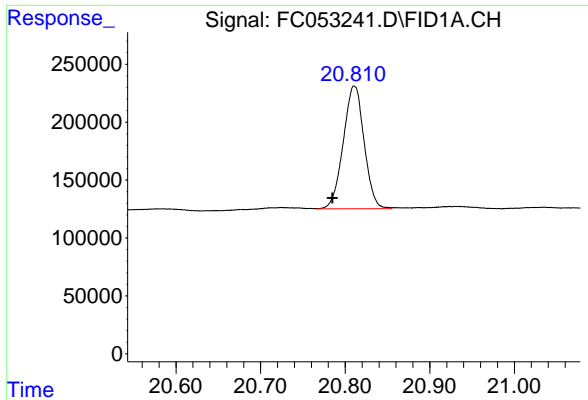
#18 n-Dotriacontane (C32)
R.T.: 18.552 min
Delta R.T.: 0.020 min
Response: 1899785
Conc: 15.90 ug/ml



#19 n-Tetratriacontane (C34)
R.T.: 19.337 min
Delta R.T.: 0.020 min
Response: 1882353
Conc: 17.00 ug/ml



#20 n-Hexatriacontane (C36)
R.T.: 20.077 min
Delta R.T.: 0.021 min
Response: 1834581
Conc: 18.18 ug/ml



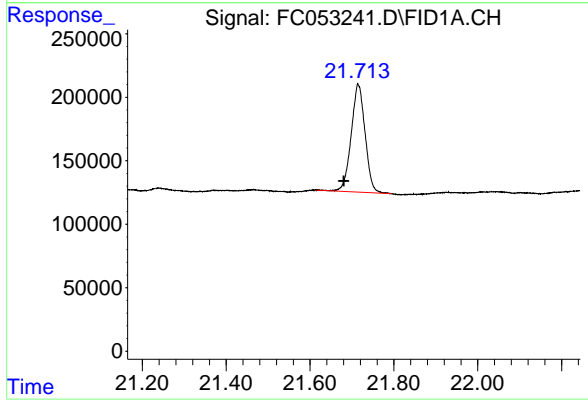
#21 n-Octatriacontane (C38)

R.T.: 20.810 min
Delta R.T.: 0.025 min
Response: 1814307
Conc: 20.36 ug/ml m

Instrument :
FID_C
ClientSampleId :
20 PPM ALIPHATIC HC STD

Manual Integrations
APPROVED

Ankita
4/20/2021 9:13:22 AM



#22 n-Tetracontane (C40)

R.T.: 21.715 min
Delta R.T.: 0.035 min
Response: 1951485
Conc: 24.38 ug/ml