

Data Path : Z:\pestpcbsrv\HPCHEM1\FID_C\Data\FC042120AL\
 Data File : FC046983.D
 Signal(s) : FID1A.CH
 Acq On : 21 Apr 2020 20:41
 Operator : DD\AJ
 Sample : L2330-04
 Misc :
 ALS Vial : 6 Sample Multiplier: 1

Instrument :
 FID_C
 ClientSampleId :
 WB-10-2

Integration File: autoint1.e
 Quant Time: Apr 22 01:27:38 2020
 Quant Method : Z:\pestpcbsrv\HPCHEM1\FID_C\Method\Alaphatic EPH 032320.M
 Quant Title : GC Extractables
 QLast Update : Tue Mar 24 12:45:07 2020
 Response via : Initial Calibration
 Integrator: ChemStation 6890 Scale Mode: Large solvent peaks clipped

Volume Inj. : 1 ul
 Signal Phase : Rxi-1ms
 Signal Info : 20M x 0.18mm x 0.18um

Compound	R.T.	Response	Conc Units
System Monitoring Compounds			
9) S ortho-Terphenyl (SURR)	11.817f	152710	1.397 ug/ml
Spiked Amount	50.000	Recovery =	2.79%
12) S 1-chlorooctadecane (S...	13.173	3540273	41.081 ug/ml
Spiked Amount	50.000	Recovery =	82.16%
Target Compounds			
2) T n-Decane (C10)	4.616	358837	3.736 ug/ml
4) T n-Dodecane (C12)	6.619	1637518	16.776 ug/ml
5) T A~2-methylnaphthalene...	7.315f	225103	2.227 ug/ml
6) T n-Tetradecane (C14)	8.401	1124626	11.421 ug/ml
7) T n-Hexadecane (C16)	9.991	1953135	19.564 ug/ml
8) T n-Octadecane (C18)	11.423	907025	8.936 ug/ml
10) T n-Eicosane (C20)	12.725	718823	7.031 ug/ml
11) T n-Heneicosane (C21)	13.334	557234	5.405 ug/ml
13) T n-Docosane (C22)	13.917	575686	5.608 ug/ml
14) T n-Tetracosane (C24)	15.013	391958	3.797 ug/ml
15) T n-Hexacosane (C26)	16.029	616435	6.008 ug/ml
16) T n-Octacosane (C28)	16.974	516979	5.080 ug/ml
17) T n-Tricontane (C30)	17.857	497920	5.082 ug/ml
18) T n-Dotriacontane (C32)	18.687	261477	3.119 ug/ml

(f)=RT Delta > 1/2 Window

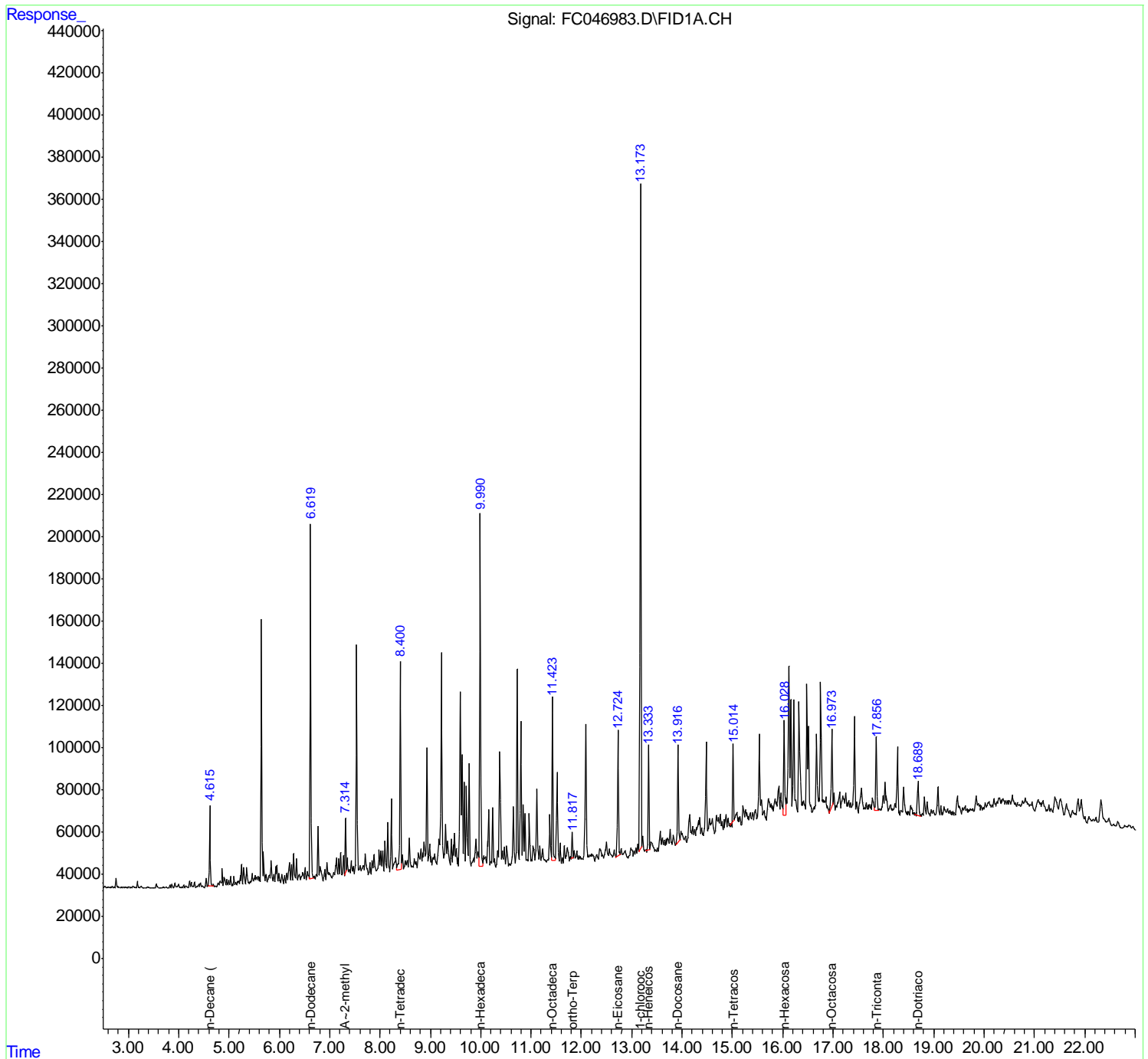
(m)=manual int.

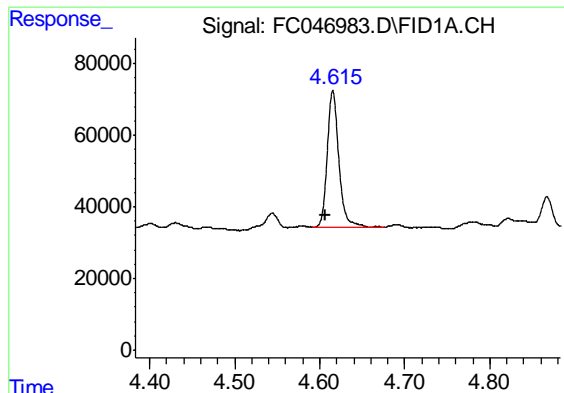
Data Path : Z:\pestpcbsrv\HPCHEM1\FID_C\Data\FC042120AL\
Data File : FC046983.D
Signal(s) : FID1A.CH
Acq On : 21 Apr 2020 20:41
Operator : DD\AJ
Sample : L2330-04
Misc :
ALS Vial : 6 Sample Multiplier: 1

Instrument :
FID_C
Client Sampled :
WB-10-2

Integration File: autoint1.e
Quant Time: Apr 22 01:27:38 2020
Quant Method : Z:\pestpcbsrv\HPCHEM1\FID_C\Method\Aliphatic EPH 032320.M
Quant Title : GC Extractables
QLast Update : Tue Mar 24 12:45:07 2020
Response via : Initial Calibration
Integrator: ChemStation 6890 Scale Mode: Large solvent peaks clipped

Volume Inj. : 1 ul
Signal Phase : Rxi-1ms
Signal Info : 20M x 0.18mm x 0.18um

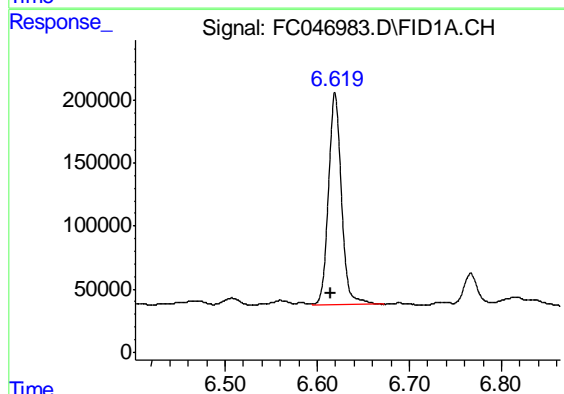




#2 n-Decane (C10)

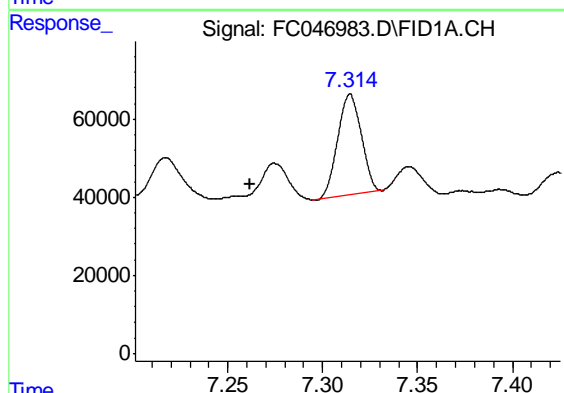
R.T.: 4.616 min
Delta R.T.: 0.008 min
Response: 358837
Conc: 3.74 ug/ml

Instrument :
FID_C
ClientSampled :
WB-10-2



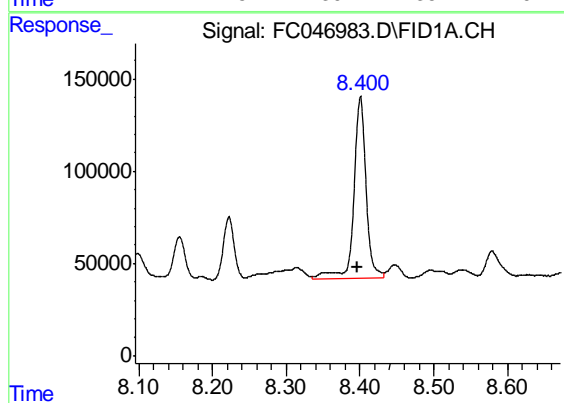
#4 n-Dodecane (C12)

R.T.: 6.619 min
Delta R.T.: 0.005 min
Response: 1637518
Conc: 16.78 ug/ml



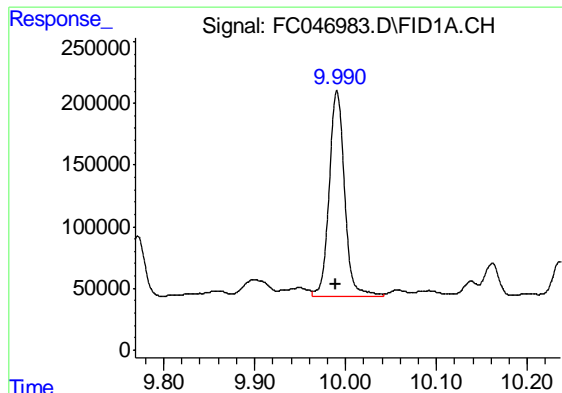
#5 A~2-methylnaphthalene (C12.89)

R.T.: 7.315 min
Delta R.T.: 0.053 min
Response: 225103
Conc: 2.23 ug/ml



#6 n-Tetradecane (C14)

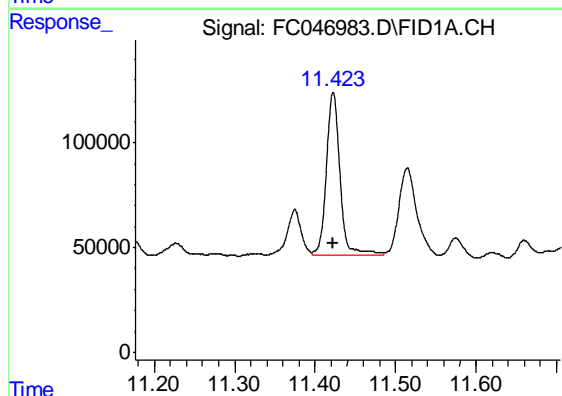
R.T.: 8.401 min
Delta R.T.: 0.003 min
Response: 1124626
Conc: 11.42 ug/ml



#7 n-Hexadecane (C16)

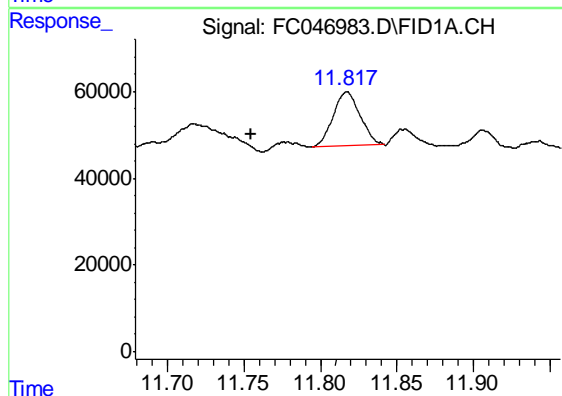
R.T.: 9.991 min
 Delta R.T.: 0.000 min
 Response: 1953135
 Conc: 19.56 ug/ml

Instrument :
 FID_C
 ClientSampleId :
 WB-10-2



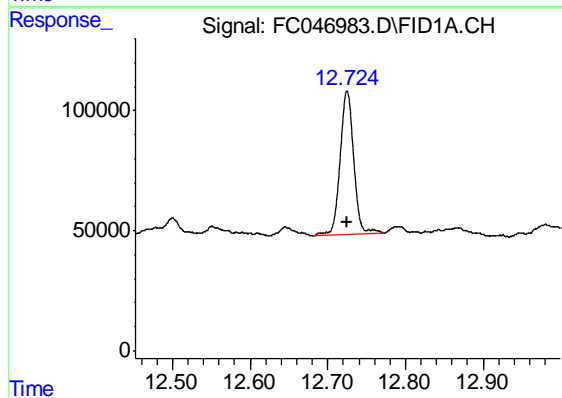
#8 n-Octadecane (C18)

R.T.: 11.423 min
 Delta R.T.: 0.000 min
 Response: 907025
 Conc: 8.94 ug/ml



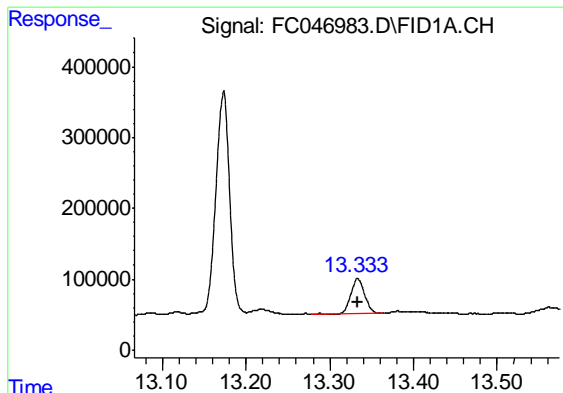
#9 ortho-Terphenyl (SURR)

R.T.: 11.817 min
 Delta R.T.: 0.063 min
 Response: 152710
 Conc: 1.40 ug/ml



#10 n-Eicosane (C20)

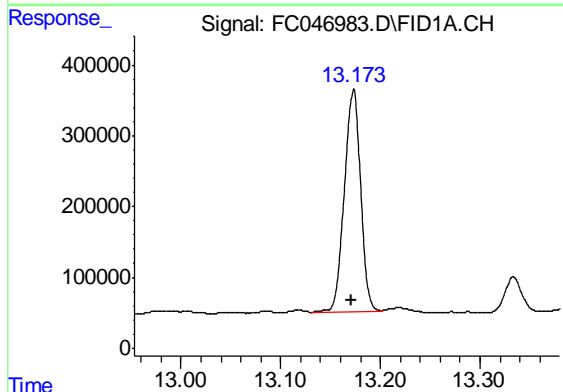
R.T.: 12.725 min
 Delta R.T.: 0.000 min
 Response: 718823
 Conc: 7.03 ug/ml



#11 n-Heneicosane (C21)

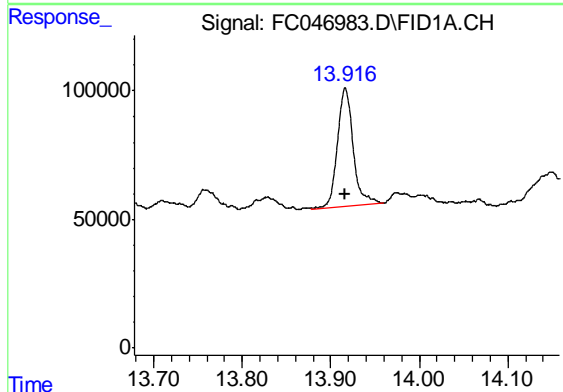
R.T.: 13.334 min
 Delta R.T.: 0.000 min
 Response: 557234
 Conc: 5.40 ug/ml

Instrument :
 FID_C
 ClientSampled :
 WB-10-2



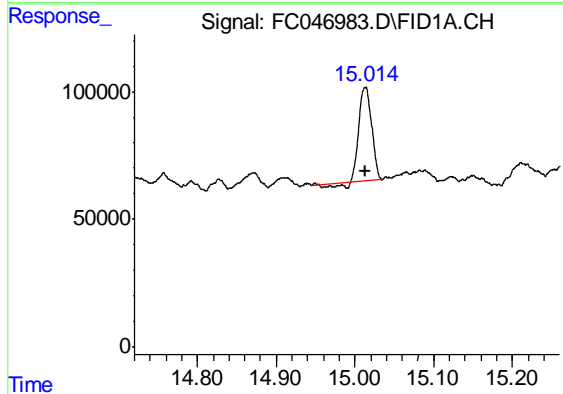
#12 1-chlorooctadecane (SURR)

R.T.: 13.173 min
 Delta R.T.: 0.002 min
 Response: 3540273
 Conc: 41.08 ug/ml



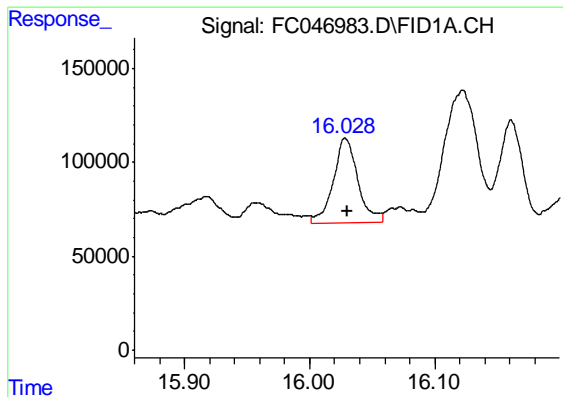
#13 n-Docosane (C22)

R.T.: 13.917 min
 Delta R.T.: 0.000 min
 Response: 575686
 Conc: 5.61 ug/ml



#14 n-Tetracosane (C24)

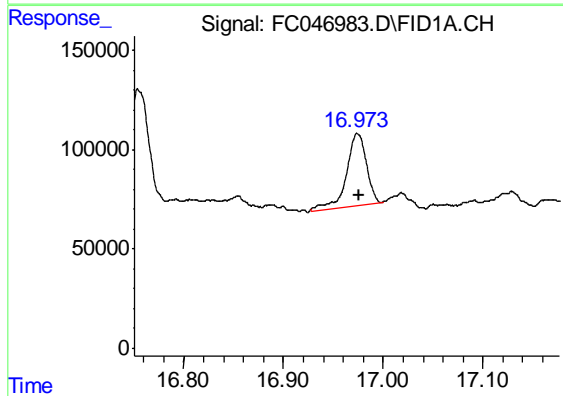
R.T.: 15.013 min
 Delta R.T.: 0.000 min
 Response: 391958
 Conc: 3.80 ug/ml



#15 n-Hexacosane (C26)

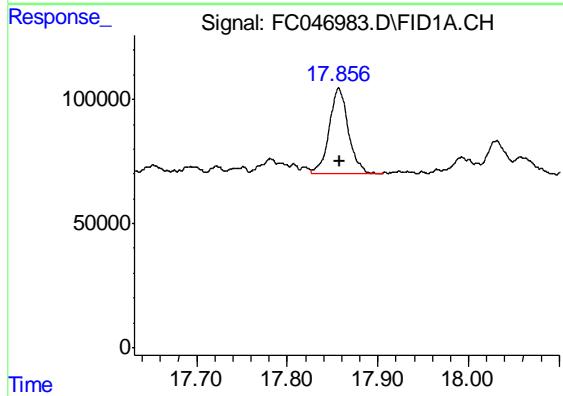
R.T.: 16.029 min
 Delta R.T.: -0.001 min
 Response: 616435
 Conc: 6.01 ug/ml

Instrument :
 FID_C
 ClientSampleId :
 WB-10-2



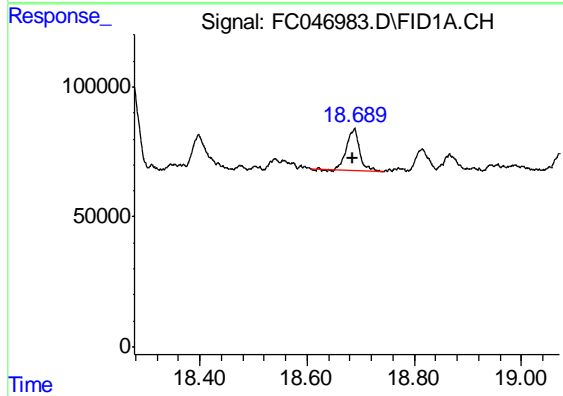
#16 n-Octacosane (C28)

R.T.: 16.974 min
 Delta R.T.: -0.001 min
 Response: 516979
 Conc: 5.08 ug/ml



#17 n-Tricontane (C30)

R.T.: 17.857 min
 Delta R.T.: 0.000 min
 Response: 497920
 Conc: 5.08 ug/ml



#18 n-Dotriacontane (C32)

R.T.: 18.687 min
 Delta R.T.: 0.002 min
 Response: 261477
 Conc: 3.12 ug/ml