

Data Path : Z:\pestpcbsrv\HPCHEM1\FID_C\Data\FC042219AL\
 Data File : FC040804.D
 Signal(s) : FID1A.CH
 Acq On : 22 Apr 2019 22:40
 Operator : AJ\SJ
 Sample : K2515-09DL 5X
 Misc :
 ALS Vial : 17 Sample Multiplier: 1

Integration File: sample.E
 Quant Time: Apr 22 23:43:28 2019
 Quant Method : Z:\pestpcbsrv\HPCHEM1\FID_C\Method\Alaphatic EPH 042219.M
 Quant Title : GC Extractables
 QLast Update : Mon Apr 22 15:26:11 2019
 Response via : Initial Calibration
 Integrator: ChemStation 6890 Scale Mode: Large solvent peaks clipped

Volume Inj. : 1 ul
 Signal Phase : Rxi-1ms
 Signal Info : 20M x 0.18mm x 0.18um

Compound	R.T.	Response	Conc Units
System Monitoring Compounds			
9) S ortho-Terphenyl (SURR)	11.021	468175	4.494 ug/ml
Spiked Amount	50.000	Recovery =	8.99%
12) S 1-chlorooctadecane (S...	12.450	353831	4.270 ug/ml
Spiked Amount	50.000	Recovery =	8.54%

Target Compounds

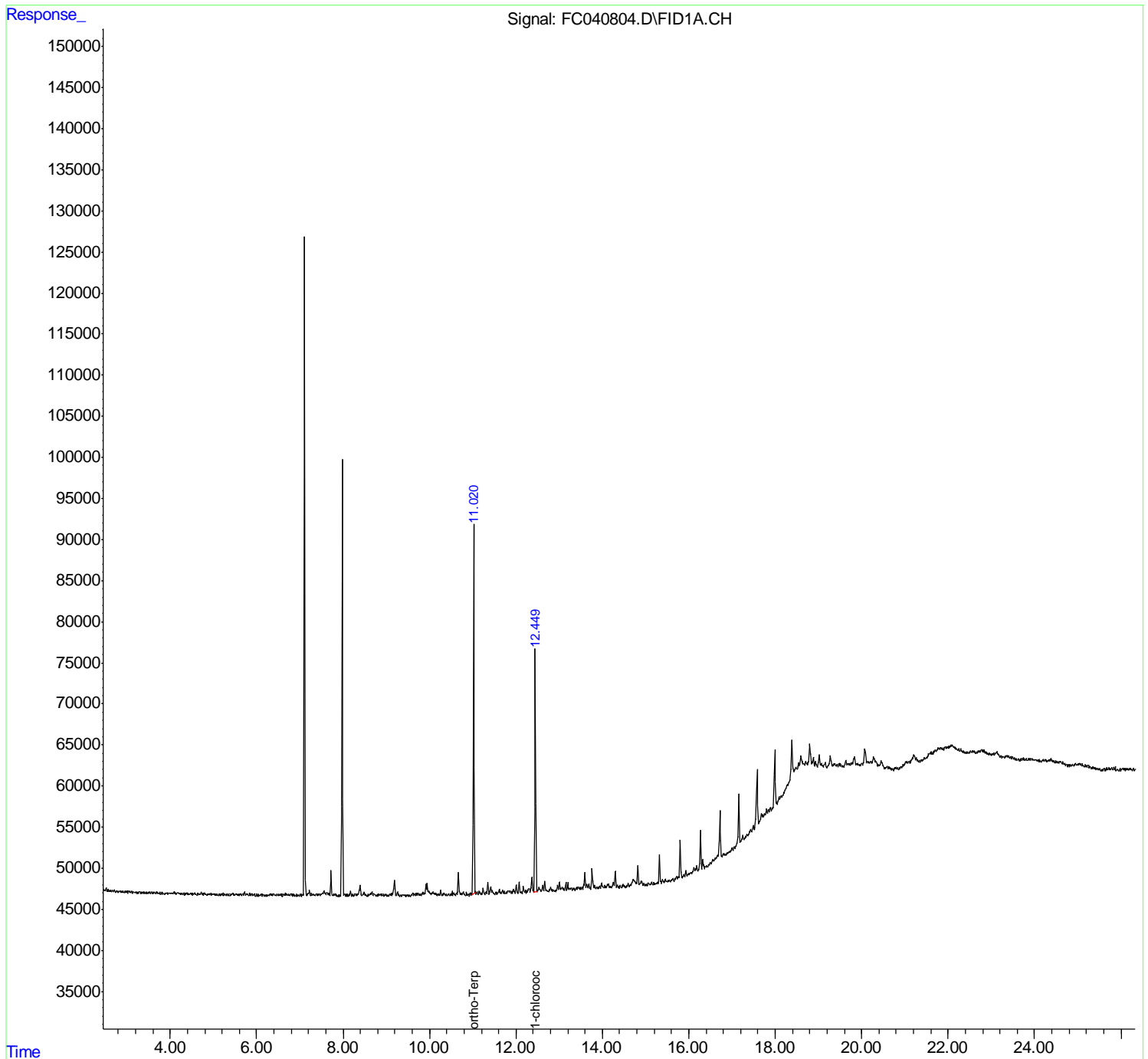
(f)=RT Delta > 1/2 Window

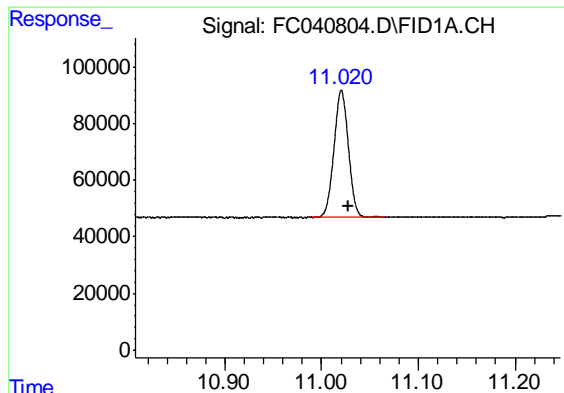
(m)=manual int.

Data Path : Z:\pestpcbsrv\HPCHEM1\FID_C\Data\FC042219AL\
Data File : FC040804.D
Signal(s) : FID1A.CH
Acq On : 22 Apr 2019 22:40
Operator : AJ\SJ
Sample : K2515-09DL 5X
Misc :
ALS Vial : 17 Sample Multiplier: 1

Integration File: sample.E
Quant Time: Apr 22 23:43:28 2019
Quant Method : Z:\pestpcbsrv\HPCHEM1\FID_C\Method\Aliphatic EPH 042219.M
Quant Title : GC Extractables
QLast Update : Mon Apr 22 15:26:11 2019
Response via : Initial Calibration
Integrator: ChemStation 6890 Scale Mode: Large solvent peaks clipped

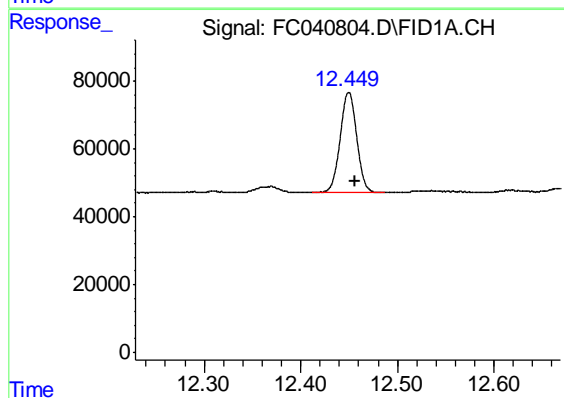
Volume Inj. : 1 ul
Signal Phase : Rxi-1ms
Signal Info : 20M x 0.18mm x 0.18um





#9 ortho-Terphenyl (SURR)

R.T.: 11.021 min
Delta R.T.: -0.007 min
Response: 468175
Conc: 4.49 ug/ml



#12 1-chlorooctadecane (SURR)

R.T.: 12.450 min
Delta R.T.: -0.007 min
Response: 353831
Conc: 4.27 ug/ml