

Data Path : Z:\pestpcbsrv\HPCHEM1\FID_C\Data\FC042221AL\
 Data File : FC053345.D
 Signal(s) : FID1A.CH
 Acq On : 23 Apr 2021 8:21
 Operator : DD\AJ
 Sample : M2090-13
 Misc :
 ALS Vial : 22 Sample Multiplier: 1

Instrument :
 FID_C
 ClientSampleId :

Integration File: autoint1.e
 Quant Time: Apr 23 08:54:49 2021
 Quant Method : Z:\pestpcbsrv\HPCHEM1\FID_C\Method\Alaphatic EPH 042021.M
 Quant Title : GC Extractables
 QLast Update : Wed Apr 21 11:02:12 2021
 Response via : Initial Calibration
 Integrator: ChemStation 6890 Scale Mode: Large solvent peaks clipped

Volume Inj. : 1 ul
 Signal Phase : Rxi-1ms
 Signal Info : 20M x 0.18mm x 0.18um

Compound	R.T.	Response	Conc Units

System Monitoring Compounds			
12) S 1-chlorooctadecane (S... Spiked Amount 50.000	12.995	2261457 Recovery =	20.895 ug/ml 41.79%
Target Compounds			
4) T n-Dodecane (C12)	6.391	142353	1.193 ug/ml
15) T n-Hexacosane (C26)	15.877	29380	0.229 ug/ml
16) T n-Octacosane (C28)	16.829	163450	1.262 ug/ml
17) T n-Tricontane (C30)	17.718	370189	2.749 ug/ml
18) T n-Dotriacontane (C32)	18.552	282689	2.061 ug/ml
19) T n-Tetratriacontane (C34)	19.337	234219	1.795 ug/ml
20) T n-Hexatriacontane (C36)	20.077	1939431	16.018 ug/ml
21) T n-Octatriacontane (C38)	20.810	1387719	13.170 ug/ml
22) T n-Tetracontane (C40)	21.714	472888	4.516 ug/ml

(f)=RT Delta > 1/2 Window

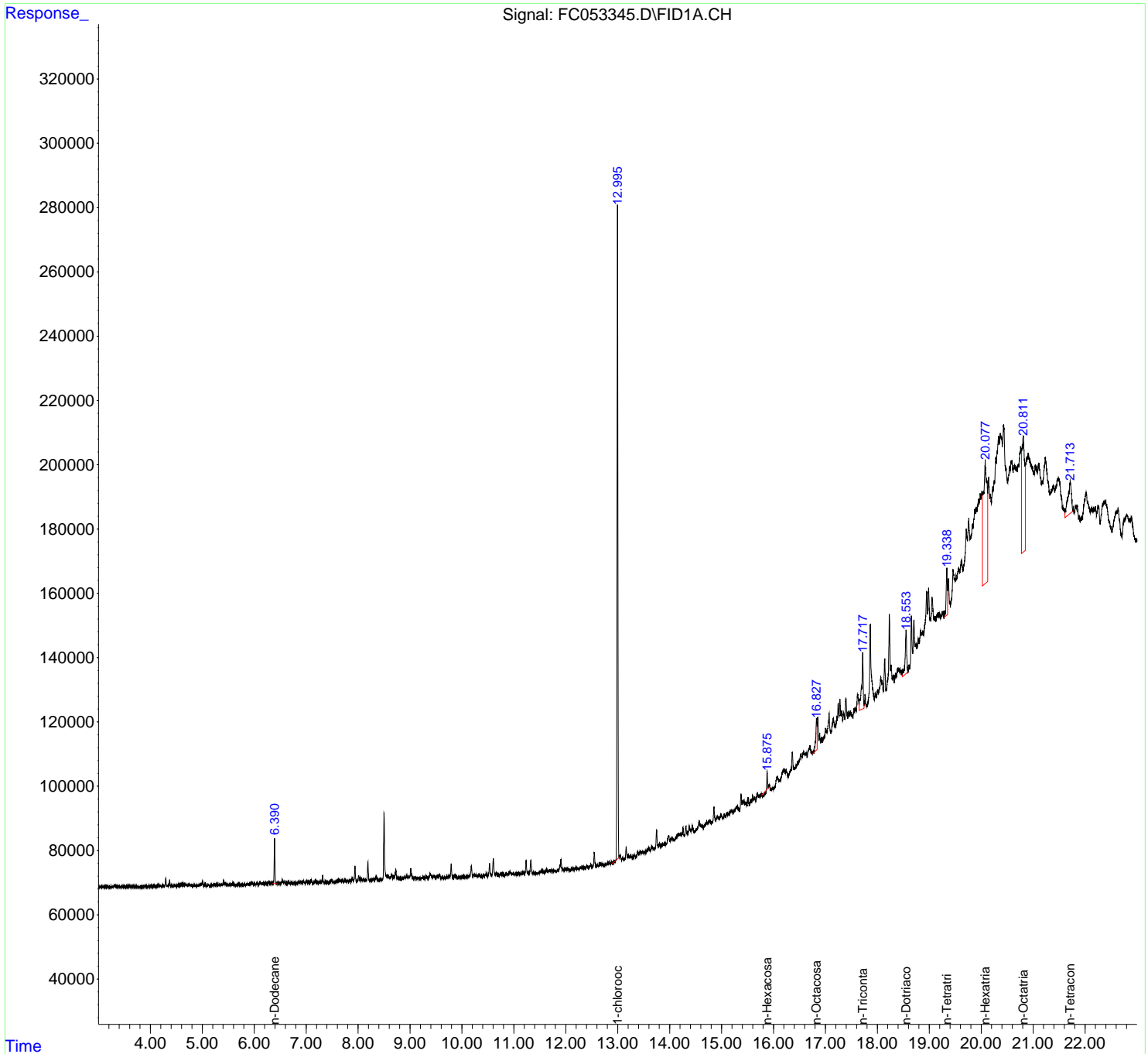
(m)=manual int.

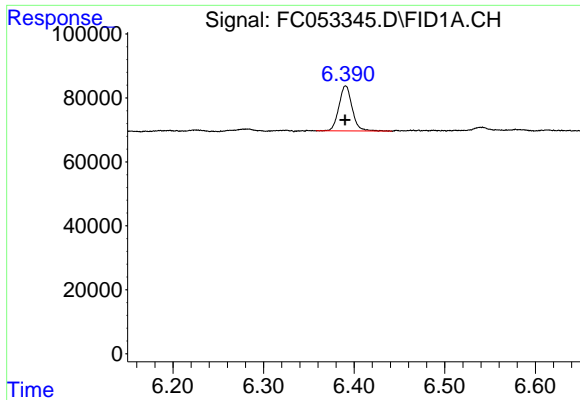
Data Path : Z:\pestpcbsrv\HPCHEM1\FID_C\Data\FC042221AL\
 Data File : FC053345.D
 Signal(s) : FID1A.CH
 Acq On : 23 Apr 2021 8:21
 Operator : DD\AJ
 Sample : M2090-13
 Misc :
 ALS Vial : 22 Sample Multiplier: 1

Instrument :
 FID_C
 ClientSampled :

Integration File: autoint1.e
 Quant Time: Apr 23 08:54:49 2021
 Quant Method : Z:\pestpcbsrv\HPCHEM1\FID_C\Method\Aliphatic EPH 042021.M
 Quant Title : GC Extractables
 QLast Update : Wed Apr 21 11:02:12 2021
 Response via : Initial Calibration
 Integrator: ChemStation 6890 Scale Mode: Large solvent peaks clipped

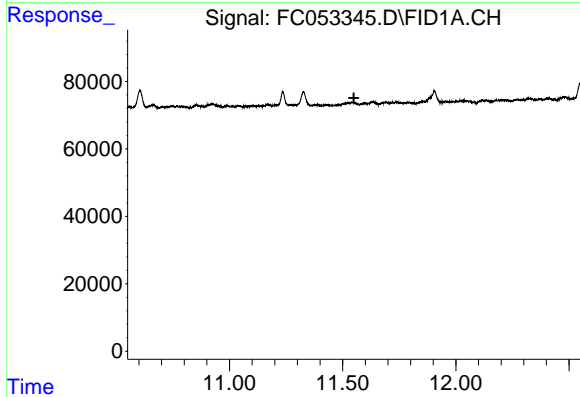
Volume Inj. : 1 ul
 Signal Phase : Rxi-1ms
 Signal Info : 20M x 0.18mm x 0.18um



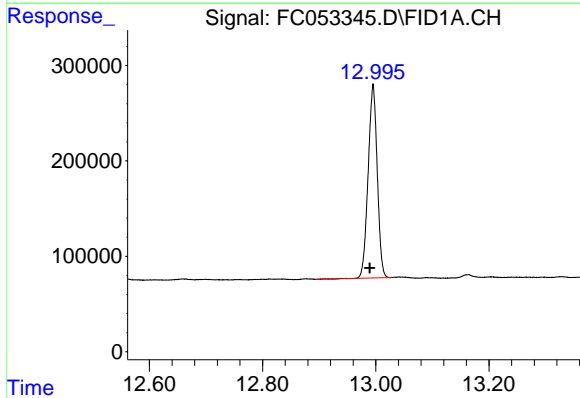


#4 n-Dodecane (C12)
 R.T.: 6.391 min
 Delta R.T.: 0.000 min
 Response: 142353
 Conc: 1.19 ug/ml

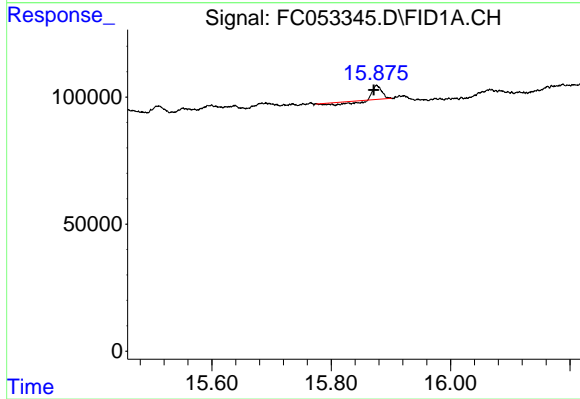
Instrument :
 FID_C
 ClientSampled :



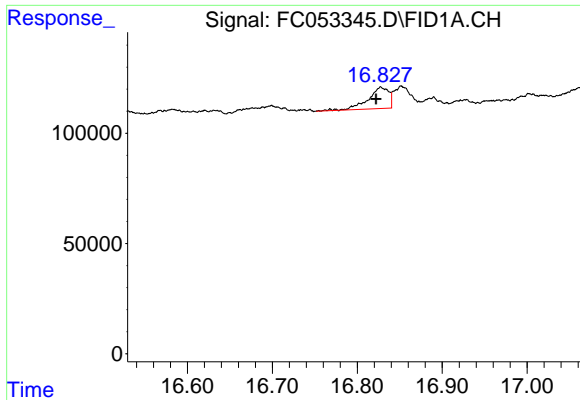
#9 ortho-Terphenyl (SURR)
 R.T.: 0.000 min
 Exp R.T. : 11.550 min
 Response: 0
 Conc: N.D.



#12 1-chlorooctadecane (SURR)
 R.T.: 12.995 min
 Delta R.T.: 0.005 min
 Response: 2261457
 Conc: 20.89 ug/ml

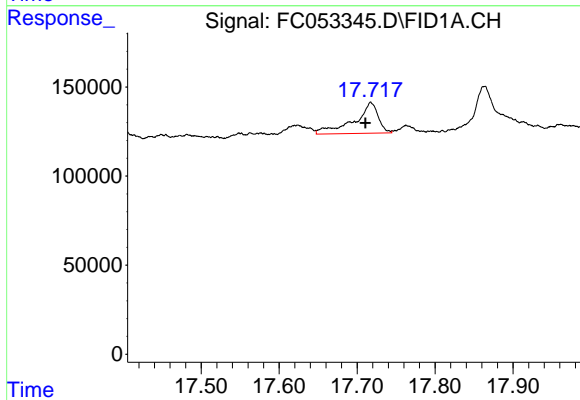


#15 n-Hexacosane (C26)
 R.T.: 15.877 min
 Delta R.T.: 0.005 min
 Response: 29380
 Conc: 0.23 ug/ml

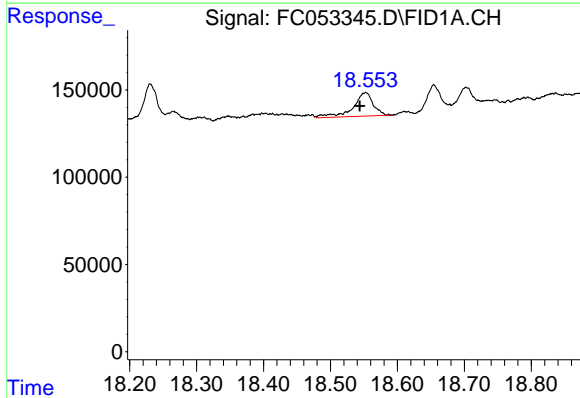


#16 n-Octacosane (C28)
 R.T.: 16.829 min
 Delta R.T.: 0.006 min
 Response: 163450
 Conc: 1.26 ug/ml

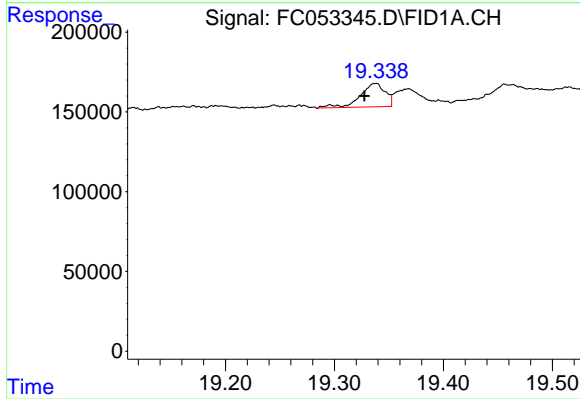
Instrument :
 FID_C
 ClientSampled :



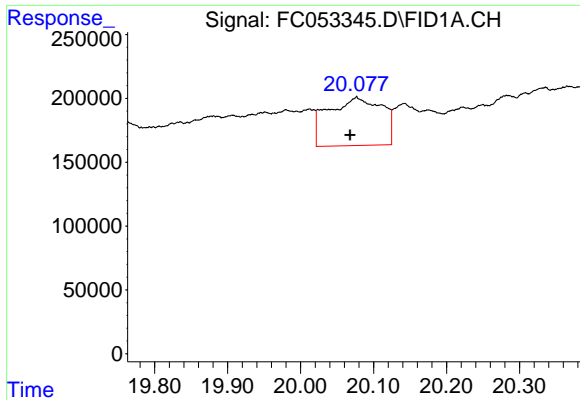
#17 n-Tricontane (C30)
 R.T.: 17.718 min
 Delta R.T.: 0.007 min
 Response: 370189
 Conc: 2.75 ug/ml



#18 n-Dotriacontane (C32)
 R.T.: 18.552 min
 Delta R.T.: 0.008 min
 Response: 282689
 Conc: 2.06 ug/ml



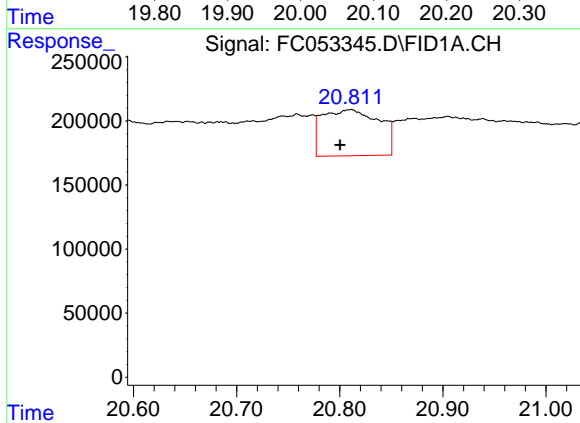
#19 n-Tetratriacontane (C34)
 R.T.: 19.337 min
 Delta R.T.: 0.010 min
 Response: 234219
 Conc: 1.79 ug/ml



#20 n-Hexatriacontane (C36)

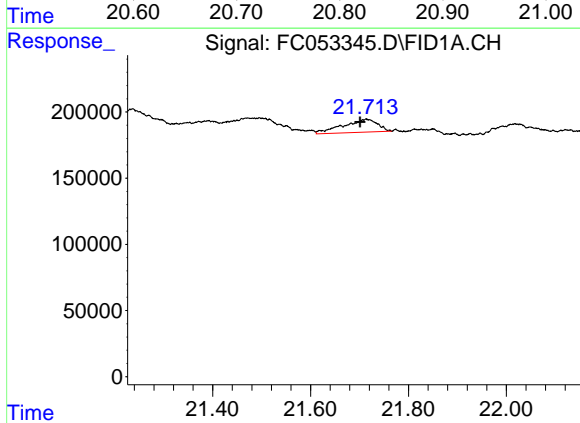
R.T.: 20.077 min
 Delta R.T.: 0.009 min
 Response: 1939431
 Conc: 16.02 ug/ml

Instrument :
 FID_C
 ClientSampleId :



#21 n-Octatriacontane (C38)

R.T.: 20.810 min
 Delta R.T.: 0.009 min
 Response: 1387719
 Conc: 13.17 ug/ml



#22 n-Tetracontane (C40)

R.T.: 21.714 min
 Delta R.T.: 0.013 min
 Response: 472888
 Conc: 4.52 ug/ml