

Data Path : Z:\pestpcbsrv\HPCHEM1\FID\_C\Data\FC042321AL\  
 Data File : FC053360.D  
 Signal(s) : FID1A.CH  
 Acq On : 23 Apr 2021 19:05  
 Operator : DD\AJ  
 Sample : M2109-05DL 25X  
 Misc :  
 ALS Vial : 7 Sample Multiplier: 1

Instrument :  
 FID\_C  
 ClientSampleId :

Integration File: autoint1.e  
 Quant Time: Apr 24 00:08:47 2021  
 Quant Method : Z:\pestpcbsrv\HPCHEM1\FID\_C\Method\Alaphatic EPH 042021.M  
 Quant Title : GC Extractables  
 QLast Update : Wed Apr 21 11:02:12 2021  
 Response via : Initial Calibration  
 Integrator: ChemStation 6890 Scale Mode: Large solvent peaks clipped

Volume Inj. : 1 ul  
 Signal Phase : Rxi-1ms  
 Signal Info : 20M x 0.18mm x 0.18um

Compound	R.T.	Response	Conc Units
-----			
System Monitoring Compounds			
9) S ortho-Terphenyl (SURR)	11.547	551351	3.984 ug/ml
Spiked Amount	50.000	Recovery =	7.97%
12) S 1-chlorooctadecane (S...	12.989	251891	2.327 ug/ml
Spiked Amount	50.000	Recovery =	4.65%
Target Compounds			
1) T n-Nonane (C9)	3.302	218156	1.880 ug/ml
2) T n-Decane (C10)	4.368	435758	3.723 ug/ml
3) T A~Naphthalene (C11.7)	5.957	373610	2.872 ug/ml
4) T n-Dodecane (C12)	6.388	668269	5.600 ug/ml
5) T A~2-methylnaphthalene...	7.013	1021114	7.725 ug/ml
6) T n-Tetradecane (C14)	8.187	1013208	8.325 ug/ml
7) T n-Hexadecane (C16)	9.790	1051457	8.738 ug/ml
8) T n-Octadecane (C18)	11.232	749951	5.919 ug/ml
10) T n-Eicosane (C20)	12.544	389027	3.034 ug/ml
11) T n-Heneicosane (C21)	13.157	207358	1.615 ug/ml
13) T n-Docosane (C22)	13.743	132454	1.028 ug/ml
-----			

(f)=RT Delta > 1/2 Window

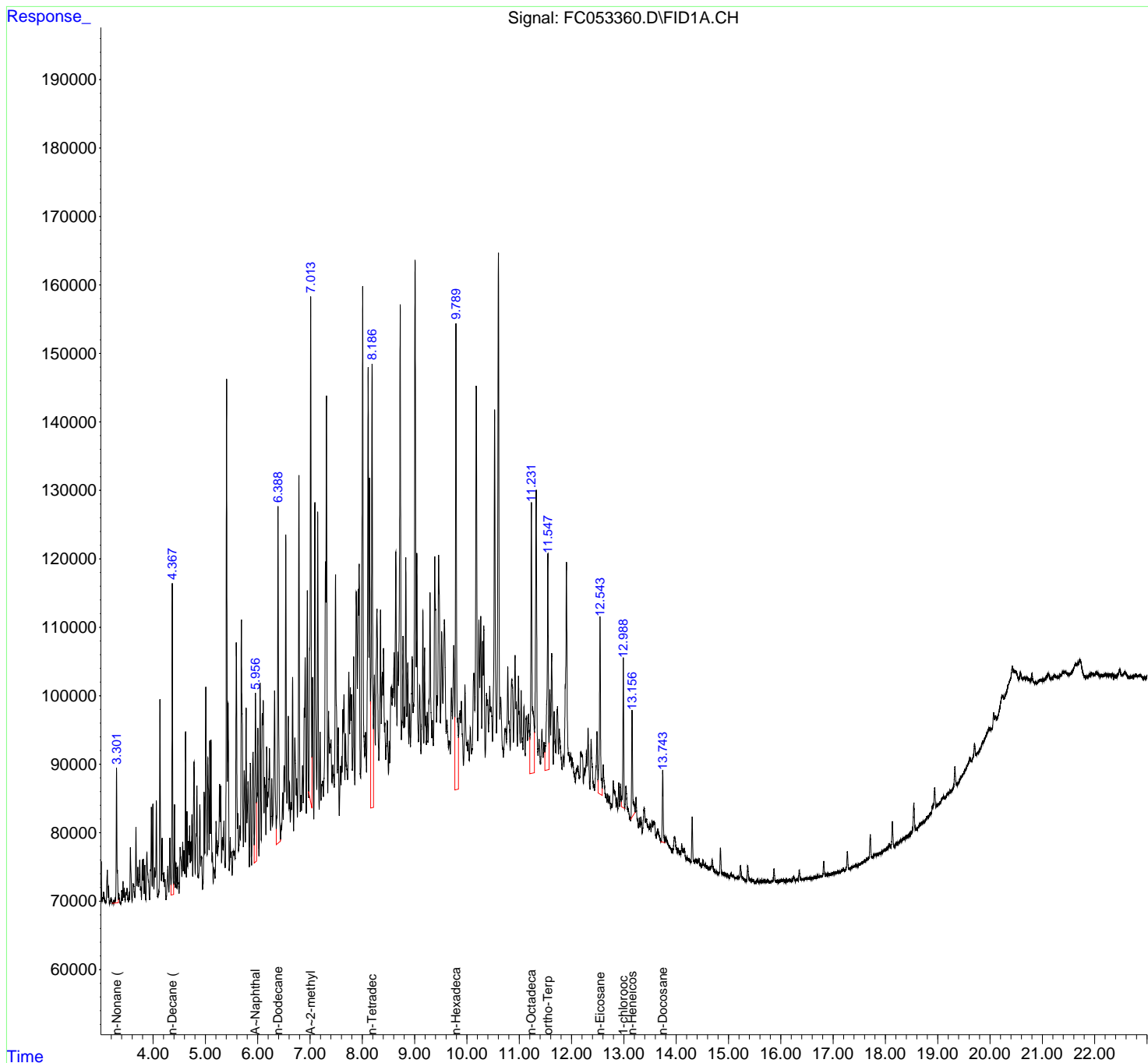
(m)=manual int.

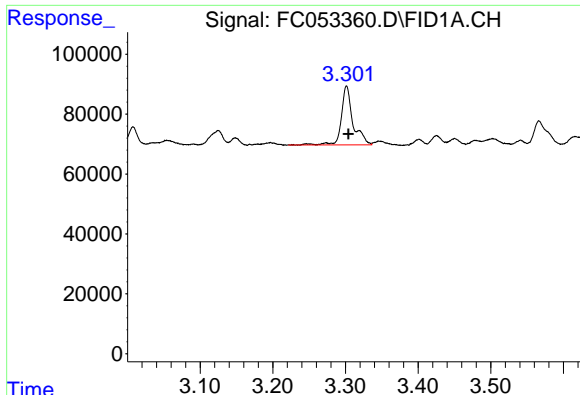
Data Path : Z:\pestpcbsrv\HPCHEM1\FID\_C\Data\FC042321AL\  
 Data File : FC053360.D  
 Signal(s) : FID1A.CH  
 Acq On : 23 Apr 2021 19:05  
 Operator : DD\AJ  
 Sample : M2109-05DL 25X  
 Misc :  
 ALS Vial : 7 Sample Multiplier: 1

Instrument :  
 FID\_C  
 ClientSampleId :

Integration File: autoint1.e  
 Quant Time: Apr 24 00:08:47 2021  
 Quant Method : Z:\pestpcbsrv\HPCHEM1\FID\_C\Method\Aliphatic EPH 042021.M  
 Quant Title : GC Extractables  
 QLast Update : Wed Apr 21 11:02:12 2021  
 Response via : Initial Calibration  
 Integrator: ChemStation 6890 Scale Mode: Large solvent peaks clipped

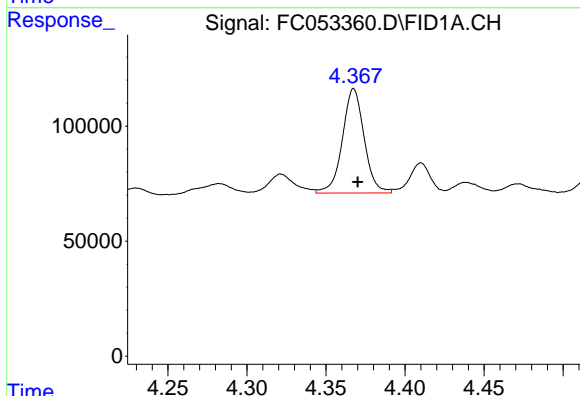
Volume Inj. : 1 ul  
 Signal Phase : Rxi-1ms  
 Signal Info : 20M x 0.18mm x 0.18um



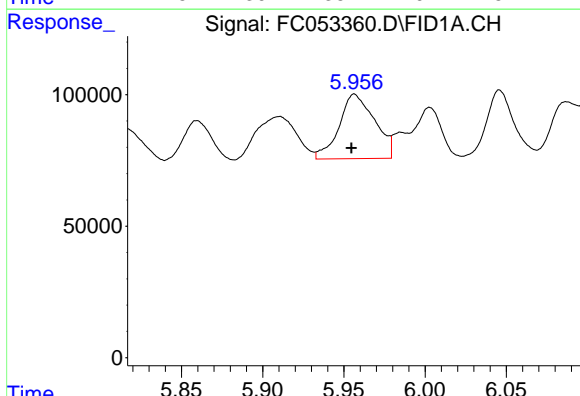


#1 n-Nonane (C9)  
 R.T.: 3.302 min  
 Delta R.T.: -0.002 min  
 Response: 218156  
 Conc: 1.88 ug/ml

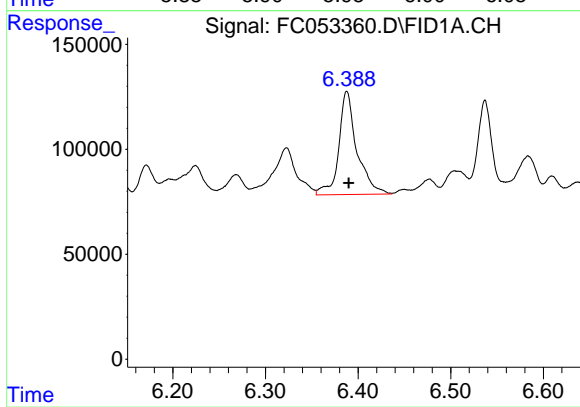
Instrument :  
 FID\_C  
 ClientSampled :



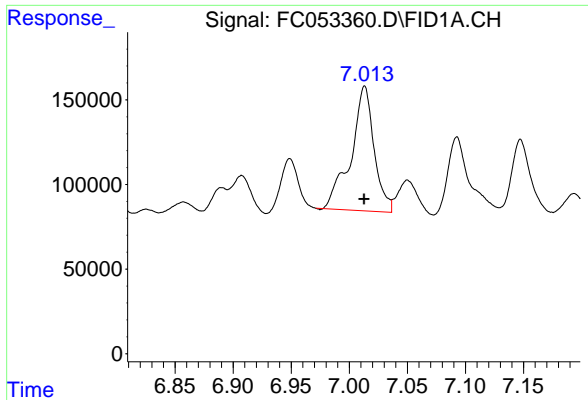
#2 n-Decane (C10)  
 R.T.: 4.368 min  
 Delta R.T.: -0.002 min  
 Response: 435758  
 Conc: 3.72 ug/ml



#3 A~Naphthalene (C11.7)  
 R.T.: 5.957 min  
 Delta R.T.: 0.002 min  
 Response: 373610  
 Conc: 2.87 ug/ml



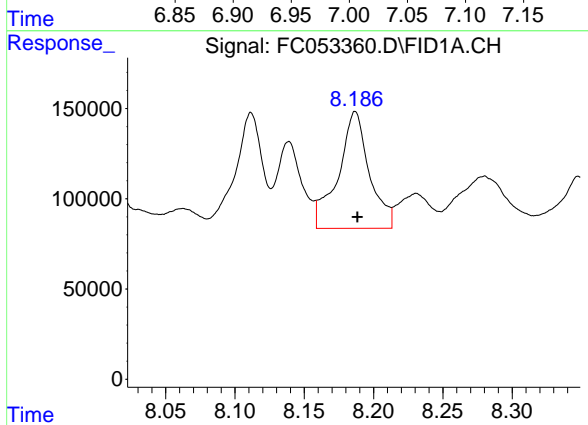
#4 n-Dodecane (C12)  
 R.T.: 6.388 min  
 Delta R.T.: -0.002 min  
 Response: 668269  
 Conc: 5.60 ug/ml



#5 A~2-methylnaphthalene (C12.89)

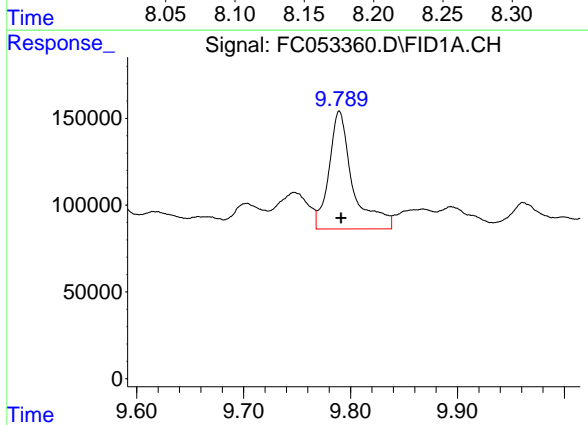
R.T.: 7.013 min  
 Delta R.T.: 0.000 min  
 Response: 1021114  
 Conc: 7.73 ug/ml

Instrument :  
 FID\_C  
 ClientSampled :



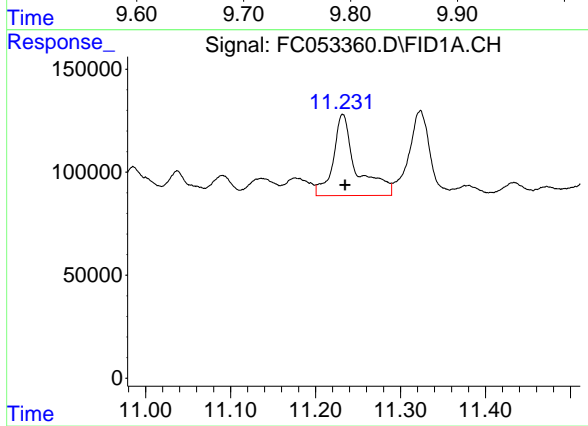
#6 n-Tetradecane (C14)

R.T.: 8.187 min  
 Delta R.T.: -0.002 min  
 Response: 1013208  
 Conc: 8.33 ug/ml



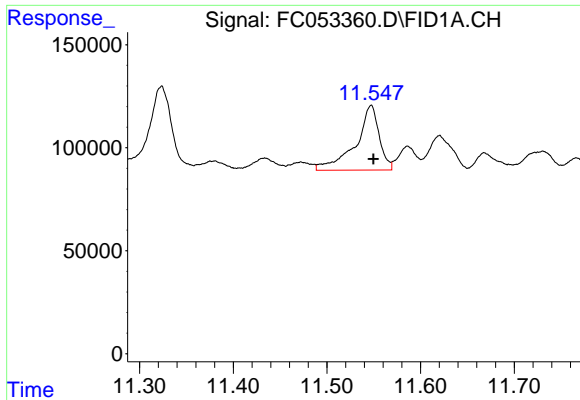
#7 n-Hexadecane (C16)

R.T.: 9.790 min  
 Delta R.T.: -0.001 min  
 Response: 1051457  
 Conc: 8.74 ug/ml



#8 n-Octadecane (C18)

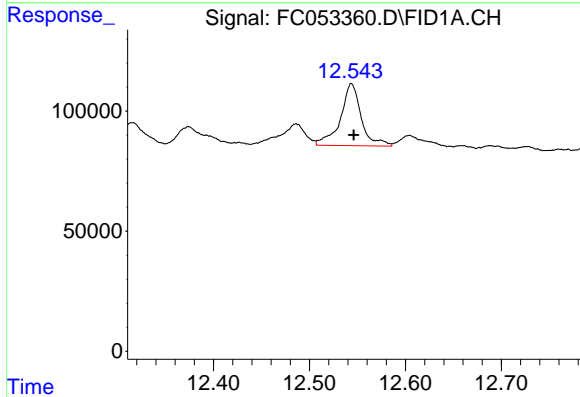
R.T.: 11.232 min  
 Delta R.T.: -0.003 min  
 Response: 749951  
 Conc: 5.92 ug/ml



#9 ortho-Terphenyl (SURR)

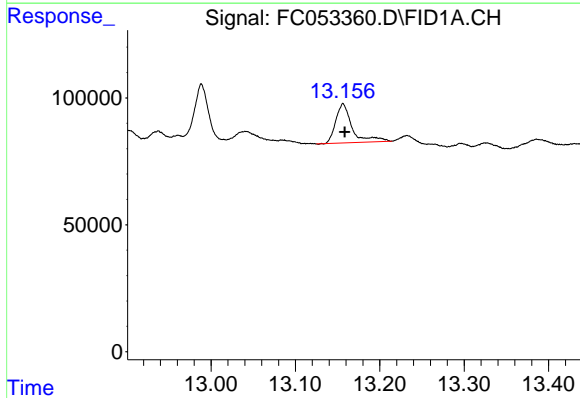
R.T.: 11.547 min  
 Delta R.T.: -0.003 min  
 Response: 551351  
 Conc: 3.98 ug/ml

Instrument :  
 FID\_C  
 ClientSampleId :



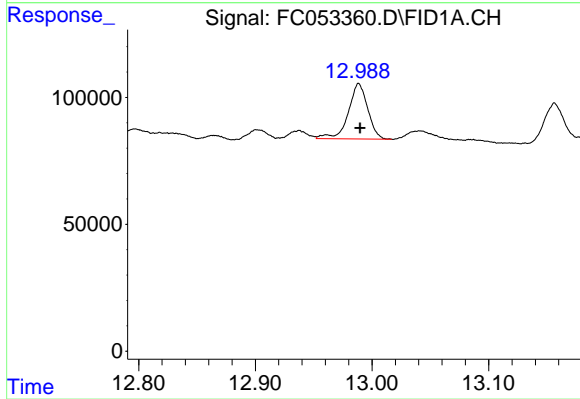
#10 n-Eicosane (C20)

R.T.: 12.544 min  
 Delta R.T.: -0.002 min  
 Response: 389027  
 Conc: 3.03 ug/ml



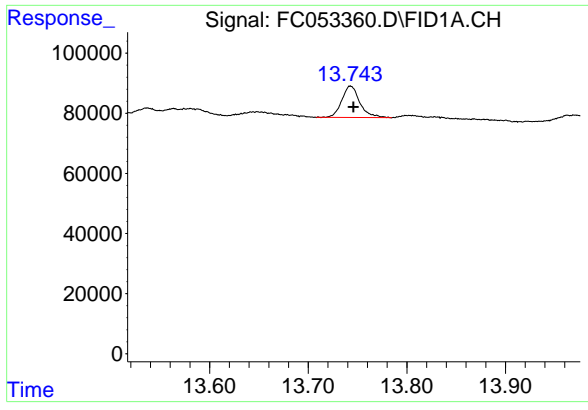
#11 n-Heneicosane (C21)

R.T.: 13.157 min  
 Delta R.T.: -0.002 min  
 Response: 207358  
 Conc: 1.61 ug/ml



#12 1-chlorooctadecane (SURR)

R.T.: 12.989 min  
 Delta R.T.: 0.000 min  
 Response: 251891  
 Conc: 2.33 ug/ml



#13 n-Docosane (C22)

R.T.: 13.743 min  
Delta R.T.: -0.003 min  
Response: 132454  
Conc: 1.03 ug/ml

Instrument :  
FID\_C  
ClientSampleId :