

Data Path : Z:\pestpcbsrv\HPCHEM1\FID\_C\Data\FC042321AL\  
 Data File : FC053379.D  
 Signal(s) : FID1A.CH  
 Acq On : 24 Apr 2021 15:53  
 Operator : DD\AJ  
 Sample : M2118-04  
 Misc :  
 ALS Vial : 24 Sample Multiplier: 1

**Instrument :**  
 FID\_C  
**ClientSampleId :**  
 20071-EPH-2

**Manual Integrations**  
**APPROVED**  
 Ankita  
 4/27/2021 10:40:34 AM

Integration File: sample.E  
 Quant Time: Apr 25 23:05:45 2021  
 Quant Method : Z:\pestpcbsrv\HPCHEM1\FID\_C\Method\Alaphatic EPH 042021.M  
 Quant Title : GC Extractables  
 QLast Update : Wed Apr 21 11:02:12 2021  
 Response via : Initial Calibration  
 Integrator: ChemStation 6890 Scale Mode: Large solvent peaks clipped

Volume Inj. : 1 ul  
 Signal Phase : Rxi-1ms  
 Signal Info : 20M x 0.18mm x 0.18um

Compound	R.T.	Response	Conc Units
-----			
System Monitoring Compounds			
9) S ortho-Terphenyl (SURR)	11.574	1704141	12.314 ug/mlm
Spiked Amount	50.000	Recovery	= 24.63%
12) S 1-chlorooctadecane (S...	12.981	766265	7.080 ug/mlm
Spiked Amount	50.000	Recovery	= 14.16%

Target Compounds

-----

(f)=RT Delta > 1/2 Window

(m)=manual int.

Data Path : Z:\pestpcbsrv\HPCHEM1\FID\_C\Data\FC042321AL\  
 Data File : FC053379.D  
 Signal(s) : FID1A.CH  
 Acq On : 24 Apr 2021 15:53  
 Operator : DD\AJ  
 Sample : M2118-04  
 Misc :  
 ALS Vial : 24 Sample Multiplier: 1

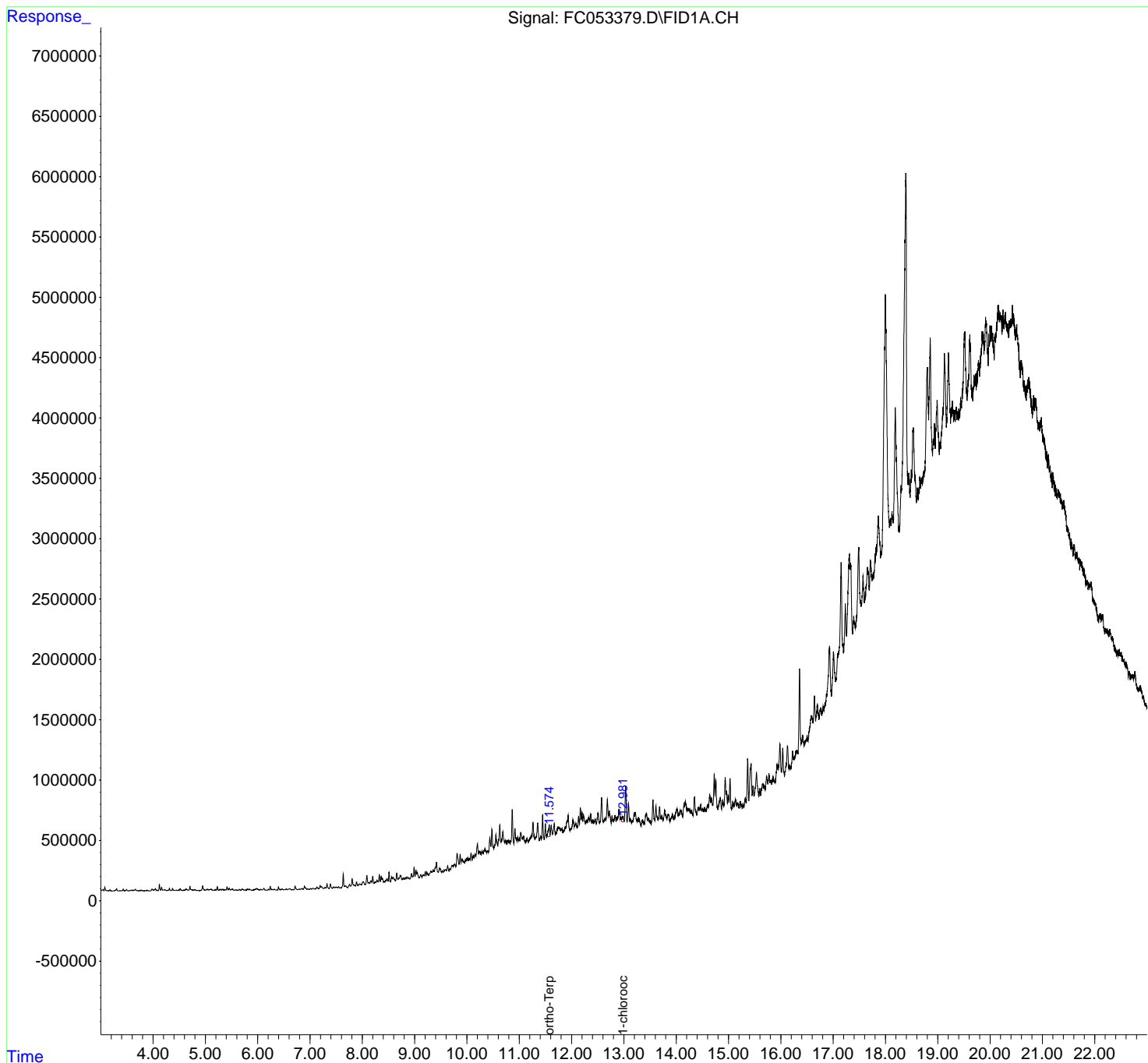
Instrument :  
 FID\_C  
 ClientSampled :  
 20071-EPH-2

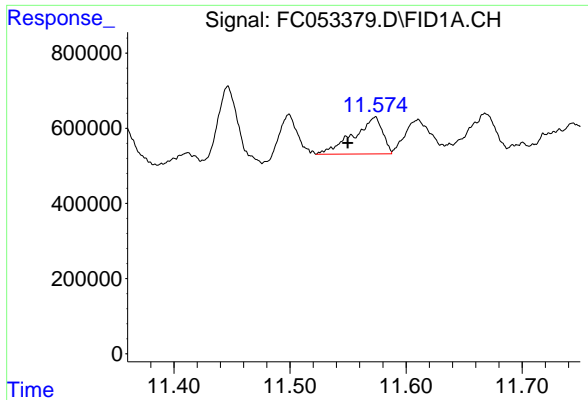
Manual Integrations  
 APPROVED

Ankita  
 4/27/2021 10:40:34 AM

Integration File: sample.E  
 Quant Time: Apr 25 23:05:45 2021  
 Quant Method : Z:\pestpcbsrv\HPCHEM1\FID\_C\Method\Alaphatic EPH 042021.M  
 Quant Title : GC Extractables  
 QLast Update : Wed Apr 21 11:02:12 2021  
 Response via : Initial Calibration  
 Integrator: ChemStation 6890 Scale Mode: Large solvent peaks clipped

Volume Inj. : 1 ul  
 Signal Phase : Rxi-1ms  
 Signal Info : 20M x 0.18mm x 0.18um





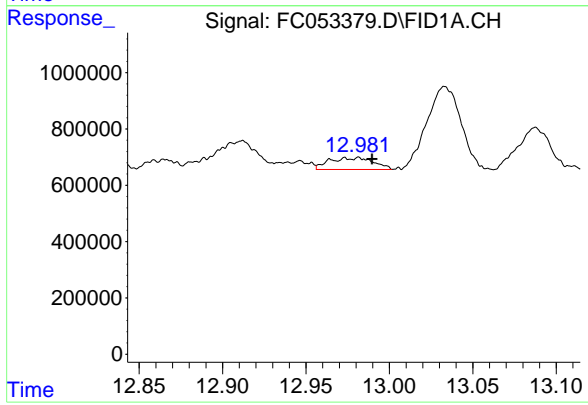
#9 ortho-Terphenyl (SURR)

R.T.: 11.574 min  
Delta R.T.: 0.024 min  
Response: 1704141  
Conc: 12.31 ug/ml m

Instrument :  
FID\_C  
ClientSampled :  
20071-EPH-2

Manual Integrations  
APPROVED

Ankita  
4/27/2021 10:40:34 AM



#12 1-chlorooctadecane (SURR)

R.T.: 12.981 min  
Delta R.T.: -0.008 min  
Response: 766265  
Conc: 7.08 ug/ml m