

Data Path : Z:\pestpcbsrv\HPCHEM1\FID\_C\Data\FC042420AL\  
 Data File : FC047102.D  
 Signal(s) : FID1A.CH  
 Acq On : 25 Apr 2020 15:16  
 Operator : DD\AJ  
 Sample : L2314-18MSD  
 Misc :  
 ALS Vial : 12 Sample Multiplier: 1

Instrument :  
 FID\_C  
 ClientSampleId :  
 WB-4-1MSD

Integration File: sample.E  
 Quant Time: Apr 27 00:35:47 2020  
 Quant Method : Z:\pestpcbsrv\HPCHEM1\FID\_C\Method\Alaphatic EPH 042320.M  
 Quant Title : GC Extractables  
 QLast Update : Thu Apr 23 16:30:34 2020  
 Response via : Initial Calibration  
 Integrator: ChemStation 6890 Scale Mode: Large solvent peaks clipped

Volume Inj. : 1 ul  
 Signal Phase : Rxi-1ms  
 Signal Info : 20M x 0.18mm x 0.18um

Compound	R.T.	Response	Conc Units
-----			
System Monitoring Compounds			
12) S 1-chlorooctadecane (S... Spiked Amount 50.000	13.168	2924914 Recovery =	32.752 ug/ml 65.50%
Target Compounds			
1) T n-Nonane (C9)	3.552	2147066	22.239 ug/ml
2) T n-Decane (C10)	4.618	2626058	27.224 ug/ml
4) T n-Dodecane (C12)	6.621	3147020	32.008 ug/ml
6) T n-Tetradecane (C14)	8.400	3395394	34.381 ug/ml
7) T n-Hexadecane (C16)	9.989	3631686	36.021 ug/ml
8) T n-Octadecane (C18)	11.421	3767878	36.498 ug/ml
10) T n-Eicosane (C20)	12.722	3740227	35.645 ug/ml
11) T n-Heneicosane (C21)	13.330	3716981	34.944 ug/ml
13) T n-Docosane (C22)	13.913	3742001	35.167 ug/ml
14) T n-Tetracosane (C24)	15.010	3773231	35.085 ug/ml
15) T n-Hexacosane (C26)	16.025	3750097	34.758 ug/ml
16) T n-Octacosane (C28)	16.969	3785599	35.417 ug/ml
17) T n-Tricontane (C30)	17.851	3656085	36.536 ug/ml
18) T n-Dotriacontane (C32)	18.679	3358628	44.076 ug/ml
19) T n-Tetratriacontane (C34)	19.456	3114876	55.432 ug/ml
20) T n-Hexatriacontane (C36)	20.193	2769004	55.333 ug/ml
21) T n-Octatriacontane (C38)	20.950	2431119	53.613 ug/ml
22) T n-Tetracontane (C40)	21.902	2562112	54.618 ug/ml
-----			

(f)=RT Delta > 1/2 Window

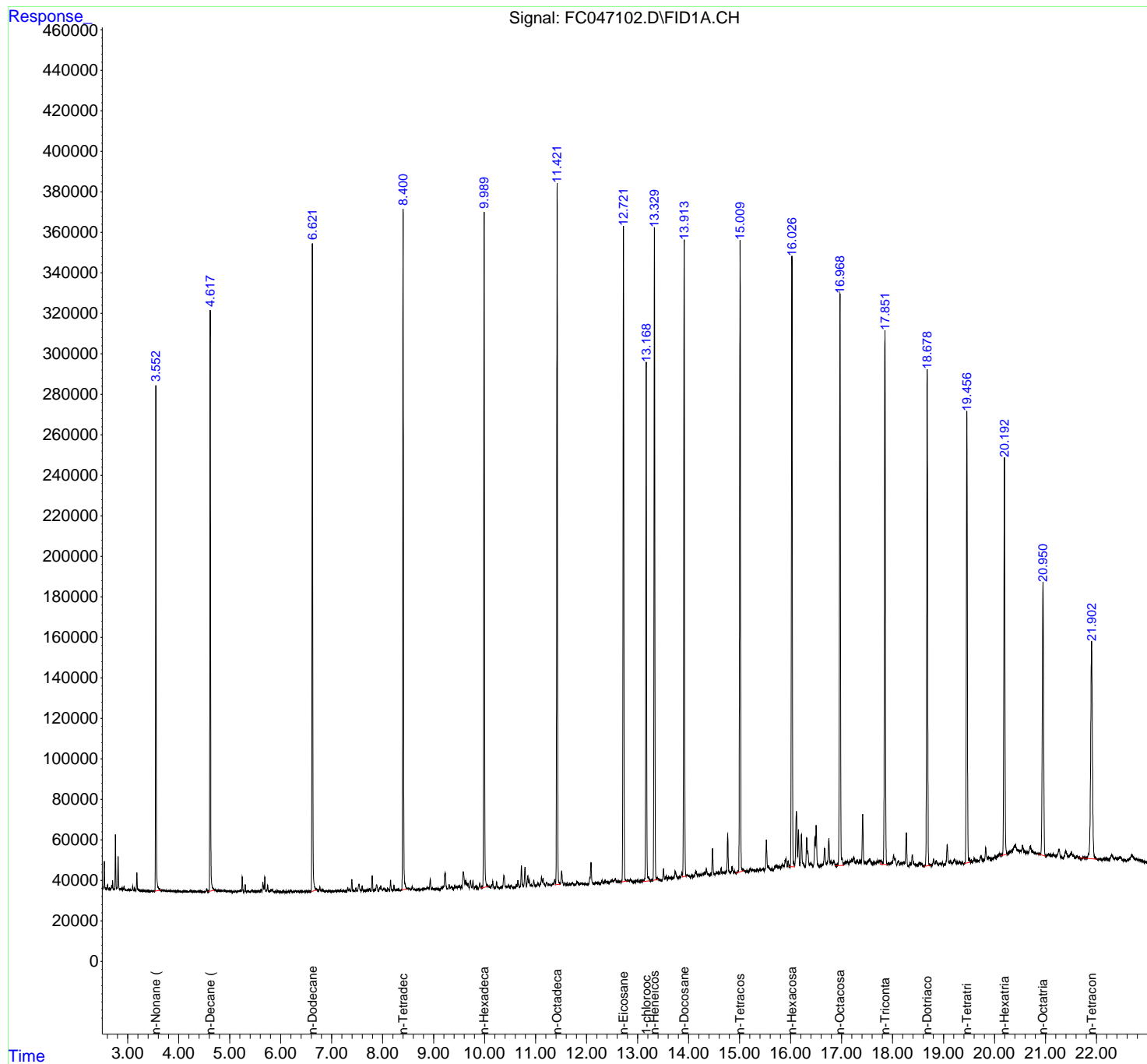
(m)=manual int.

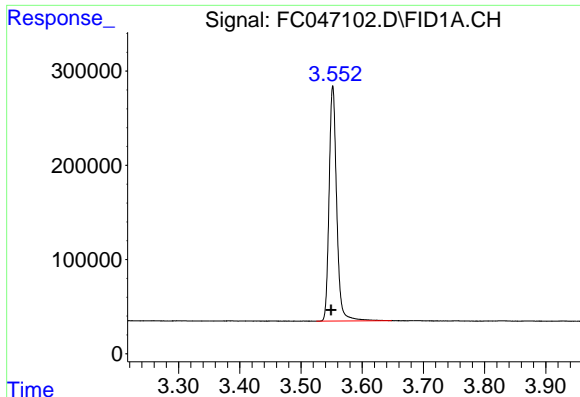
Data Path : Z:\pestpcbsrv\HPCHEM1\FID\_C\Data\FC042420AL\  
Data File : FC047102.D  
Signal(s) : FID1A.CH  
Acq On : 25 Apr 2020 15:16  
Operator : DD\AJ  
Sample : L2314-18MSD  
Misc :  
ALS Vial : 12 Sample Multiplier: 1

Instrument :  
FID\_C  
ClientSampled :  
WB-4-1MSD

Integration File: sample.E  
Quant Time: Apr 27 00:35:47 2020  
Quant Method : Z:\pestpcbsrv\HPCHEM1\FID\_C\Method\Aliphatic EPH 042320.M  
Quant Title : GC Extractables  
QLast Update : Thu Apr 23 16:30:34 2020  
Response via : Initial Calibration  
Integrator: ChemStation 6890 Scale Mode: Large solvent peaks clipped

Volume Inj. : 1 ul  
Signal Phase : Rxi-1ms  
Signal Info : 20M x 0.18mm x 0.18um

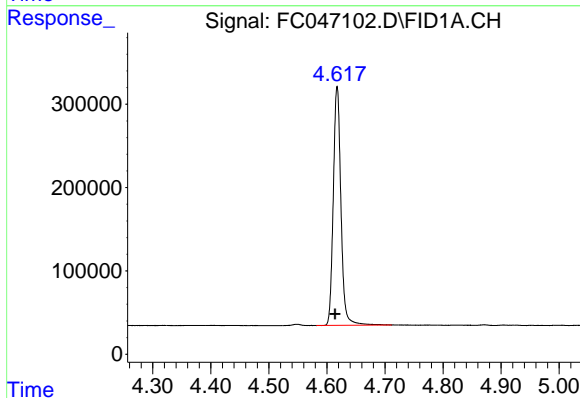




#1 n-Nonane (C9)

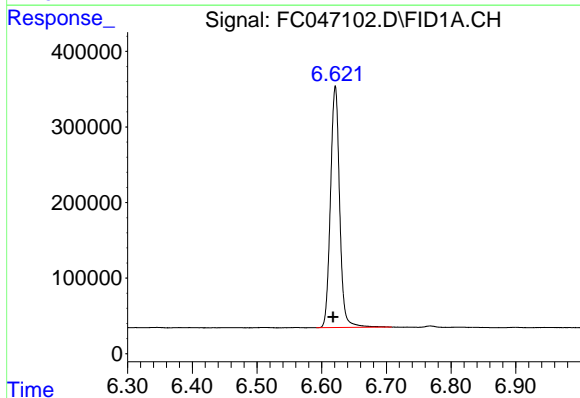
R.T.: 3.552 min  
Delta R.T.: 0.003 min  
Response: 2147066  
Conc: 22.24 ug/ml

Instrument :  
FID\_C  
ClientSampleId :  
WB-4-1MSD



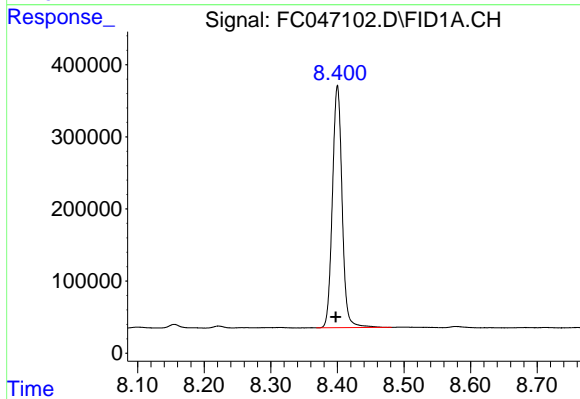
#2 n-Decane (C10)

R.T.: 4.618 min  
Delta R.T.: 0.003 min  
Response: 2626058  
Conc: 27.22 ug/ml



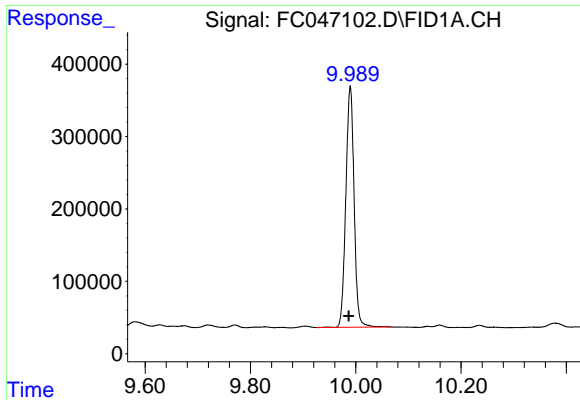
#4 n-Dodecane (C12)

R.T.: 6.621 min  
Delta R.T.: 0.003 min  
Response: 3147020  
Conc: 32.01 ug/ml



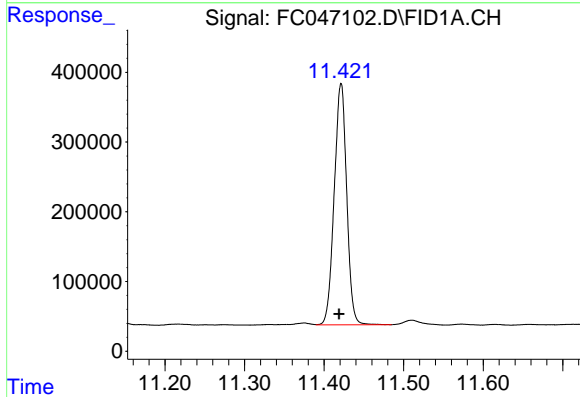
#6 n-Tetradecane (C14)

R.T.: 8.400 min  
Delta R.T.: 0.002 min  
Response: 3395394  
Conc: 34.38 ug/ml

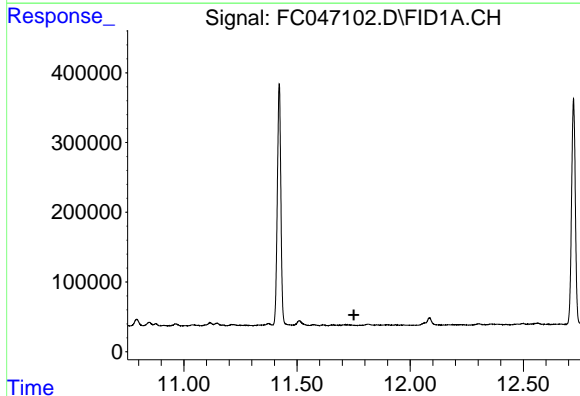


#7 n-Hexadecane (C16)  
 R.T.: 9.989 min  
 Delta R.T.: 0.003 min  
 Response: 3631686  
 Conc: 36.02 ug/ml

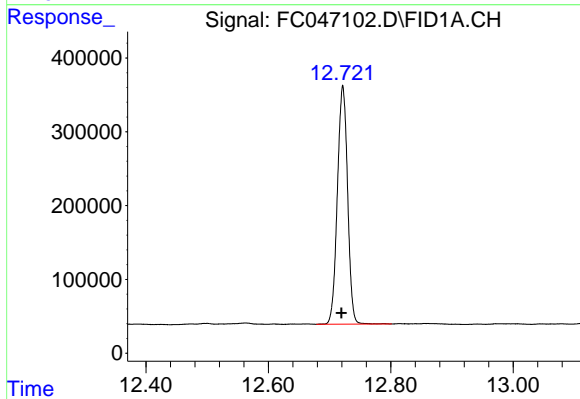
Instrument :  
 FID\_C  
 ClientSampleId :  
 WB-4-1MSD



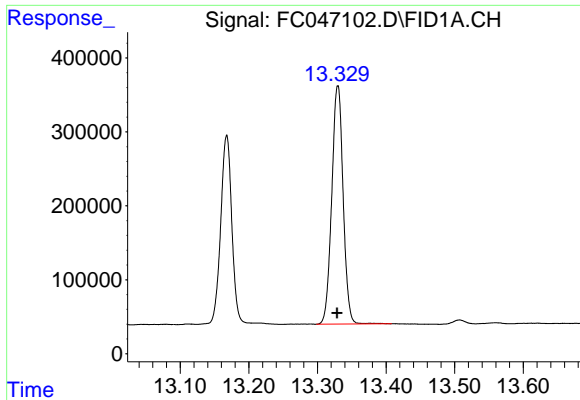
#8 n-Octadecane (C18)  
 R.T.: 11.421 min  
 Delta R.T.: 0.002 min  
 Response: 3767878  
 Conc: 36.50 ug/ml



#9 ortho-Terphenyl (SURR)  
 R.T.: 0.000 min  
 Exp R.T. : 11.751 min  
 Response: 0  
 Conc: N.D.

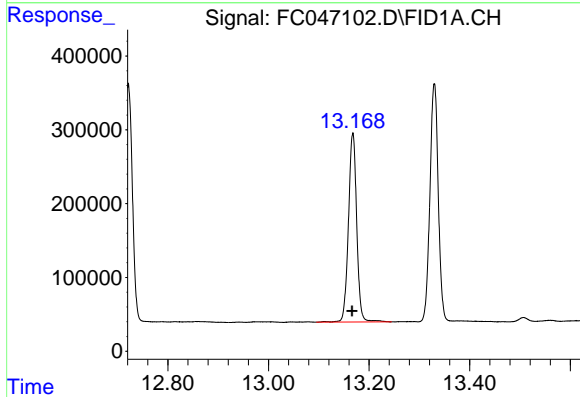


#10 n-Eicosane (C20)  
 R.T.: 12.722 min  
 Delta R.T.: 0.002 min  
 Response: 3740227  
 Conc: 35.65 ug/ml

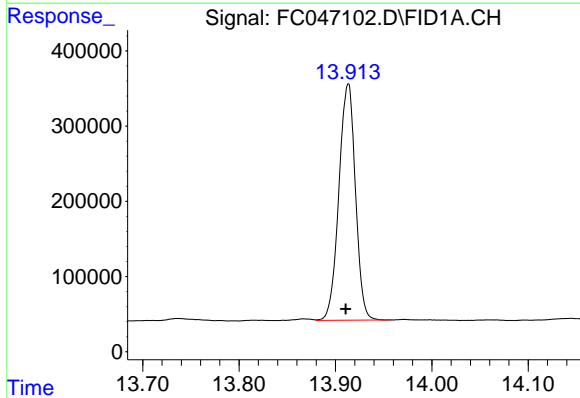


#11 n-Heneicosane (C21)  
R.T.: 13.330 min  
Delta R.T.: 0.001 min  
Response: 3716981  
Conc: 34.94 ug/ml

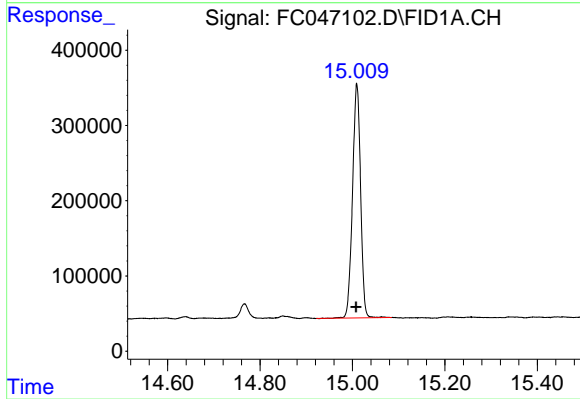
Instrument :  
FID\_C  
ClientSampleId :  
WB-4-1MSD



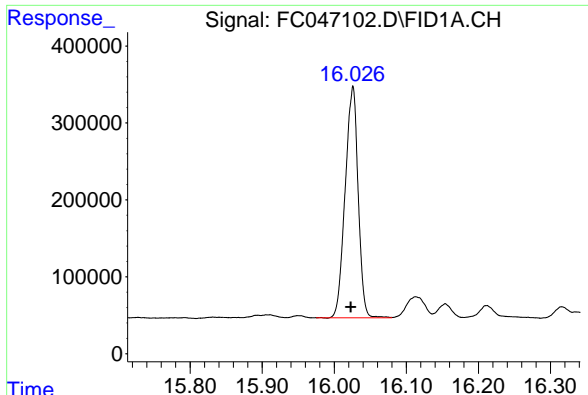
#12 1-chlorooctadecane (SURRE)  
R.T.: 13.168 min  
Delta R.T.: 0.001 min  
Response: 2924914  
Conc: 32.75 ug/ml



#13 n-Docosane (C22)  
R.T.: 13.913 min  
Delta R.T.: 0.002 min  
Response: 3742001  
Conc: 35.17 ug/ml



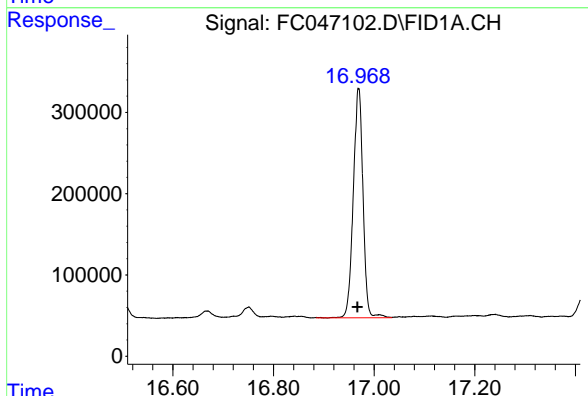
#14 n-Tetracosane (C24)  
R.T.: 15.010 min  
Delta R.T.: 0.002 min  
Response: 3773231  
Conc: 35.09 ug/ml



#15 n-Hexacosane (C26)

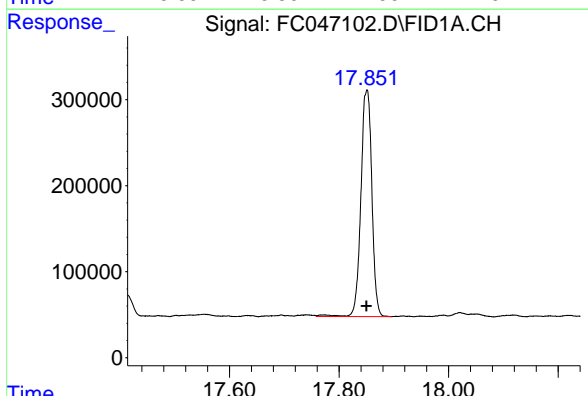
R.T.: 16.025 min  
 Delta R.T.: 0.002 min  
 Response: 3750097  
 Conc: 34.76 ug/ml

Instrument :  
 FID\_C  
 ClientSampled :  
 WB-4-1MSD



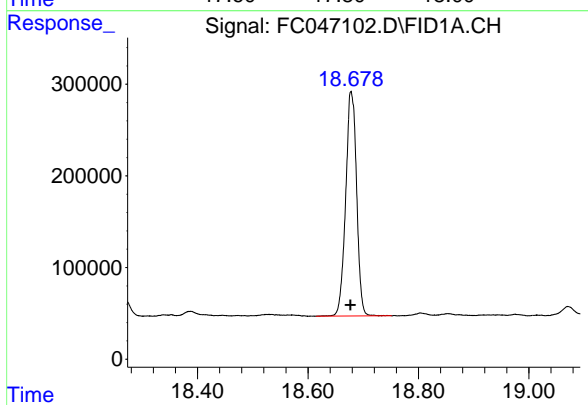
#16 n-Octacosane (C28)

R.T.: 16.969 min  
 Delta R.T.: 0.002 min  
 Response: 3785599  
 Conc: 35.42 ug/ml



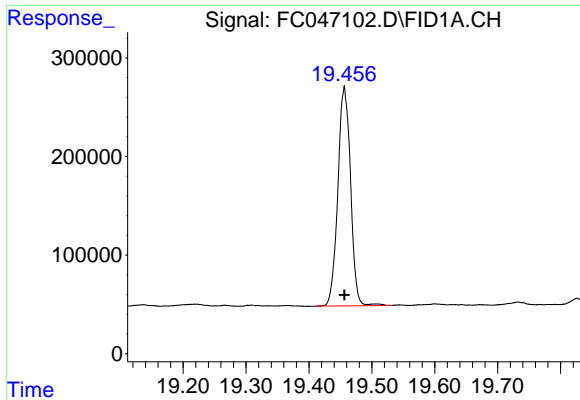
#17 n-Tricontane (C30)

R.T.: 17.851 min  
 Delta R.T.: 0.000 min  
 Response: 3656085  
 Conc: 36.54 ug/ml



#18 n-Dotriacontane (C32)

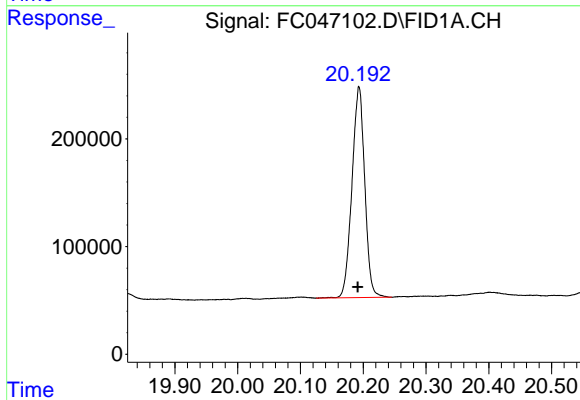
R.T.: 18.679 min  
 Delta R.T.: 0.002 min  
 Response: 3358628  
 Conc: 44.08 ug/ml



#19 n-Tetratriacontane (C34)

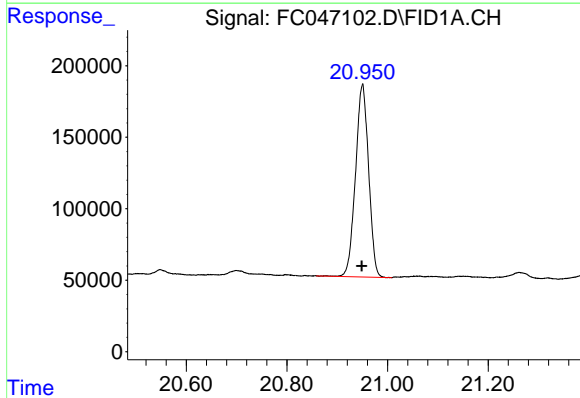
R.T.: 19.456 min  
Delta R.T.: 0.000 min  
Response: 3114876  
Conc: 55.43 ug/ml

Instrument :  
FID\_C  
ClientSampled :  
WB-4-1MSD



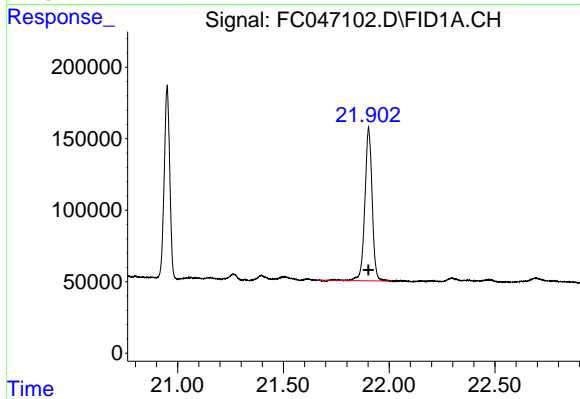
#20 n-Hexatriacontane (C36)

R.T.: 20.193 min  
Delta R.T.: 0.002 min  
Response: 2769004  
Conc: 55.33 ug/ml



#21 n-Octatriacontane (C38)

R.T.: 20.950 min  
Delta R.T.: 0.001 min  
Response: 2431119  
Conc: 53.61 ug/ml



#22 n-Tetracontane (C40)

R.T.: 21.902 min  
Delta R.T.: 0.000 min  
Response: 2562112  
Conc: 54.62 ug/ml