

Data Path : Z:\pestpcbsrv\HPCHEM1\FID_C\Data\FC042621AL\
 Data File : FC053405.D
 Signal(s) : FID1A.CH
 Acq On : 26 Apr 2021 20:06
 Operator : DD\AJ
 Sample : M2152-09
 Misc :
 ALS Vial : 14 Sample Multiplier: 1

Instrument :
 FID_C
 ClientSampleId :

Integration File: autoint1.e
 Quant Time: Apr 27 01:28:54 2021
 Quant Method : Z:\pestpcbsrv\HPCHEM1\FID_C\Method\Alaphatic EPH 042021.M
 Quant Title : GC Extractables
 QLast Update : Wed Apr 21 11:02:12 2021
 Response via : Initial Calibration
 Integrator: ChemStation 6890 Scale Mode: Large solvent peaks clipped

Volume Inj. : 1 ul
 Signal Phase : Rxi-1ms
 Signal Info : 20M x 0.18mm x 0.18um

Compound	R.T.	Response	Conc Units

System Monitoring Compounds			
9) S ortho-Terphenyl (SURR)	11.557	5098801	36.842 ug/ml
Spiked Amount	50.000	Recovery	= 73.68%
12) S 1-chlorooctadecane (S...	12.999	3870967	35.765 ug/ml
Spiked Amount	50.000	Recovery	= 71.53%
Target Compounds			
15) T n-Hexacosane (C26)	15.840	114034	0.887 ug/ml
16) T n-Octacosane (C28)	16.834	52780	0.408 ug/ml
17) T n-Tricontane (C30)	17.719	214151	1.590 ug/ml
18) T n-Dotriacontane (C32)	18.548	366516	2.673 ug/ml
19) T n-Tetraatriacontane (C34)	19.336	265346	2.033 ug/ml
20) T n-Hexatriacontane (C36)	20.083	1749589	14.450 ug/ml
21) T n-Octatriacontane (C38)	20.813	1058347	10.044 ug/ml

(f)=RT Delta > 1/2 Window

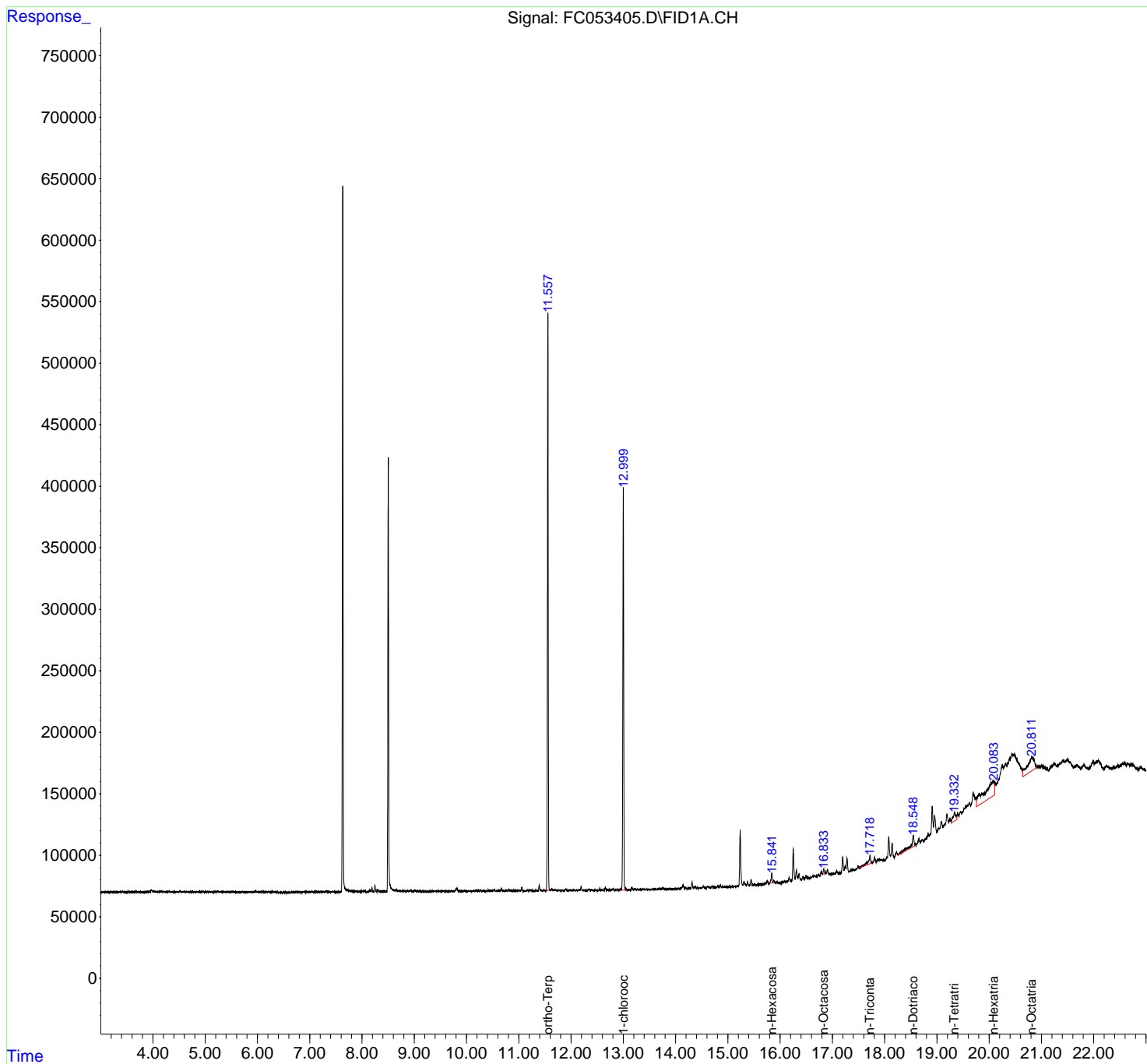
(m)=manual int.

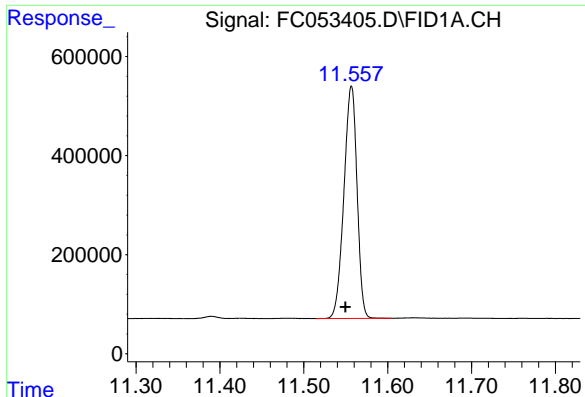
Data Path : Z:\pestpcbsrv\HPCHEM1\FID_C\Data\FC042621AL\
 Data File : FC053405.D
 Signal(s) : FID1A.CH
 Acq On : 26 Apr 2021 20:06
 Operator : DD\AJ
 Sample : M2152-09
 Misc :
 ALS Vial : 14 Sample Multiplier: 1

Instrument :
 FID_C
 ClientSampled :

Integration File: autoint1.e
 Quant Time: Apr 27 01:28:54 2021
 Quant Method : Z:\pestpcbsrv\HPCHEM1\FID_C\Method\Alaphatic EPH 042021.M
 Quant Title : GC Extractables
 QLast Update : Wed Apr 21 11:02:12 2021
 Response via : Initial Calibration
 Integrator: ChemStation 6890 Scale Mode: Large solvent peaks clipped

Volume Inj. : 1 ul
 Signal Phase : Rxi-1ms
 Signal Info : 20M x 0.18mm x 0.18um

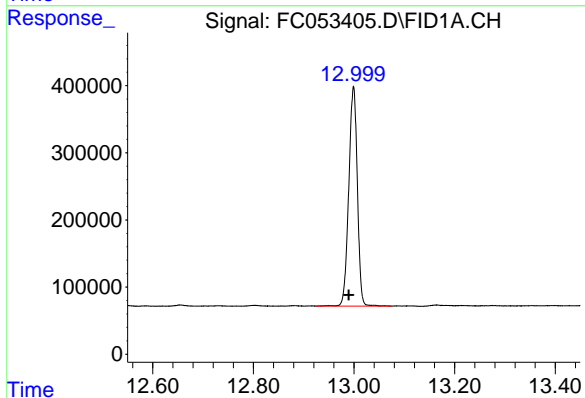




#9 ortho-Terphenyl (SURR)

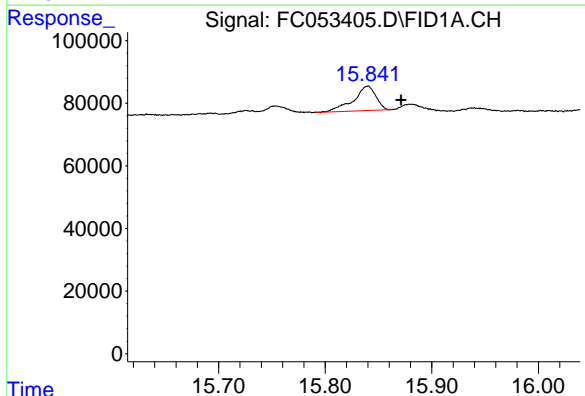
R.T.: 11.557 min
 Delta R.T.: 0.007 min
 Response: 5098801
 Conc: 36.84 ug/ml

Instrument :
 FID_C
 ClientSampled :



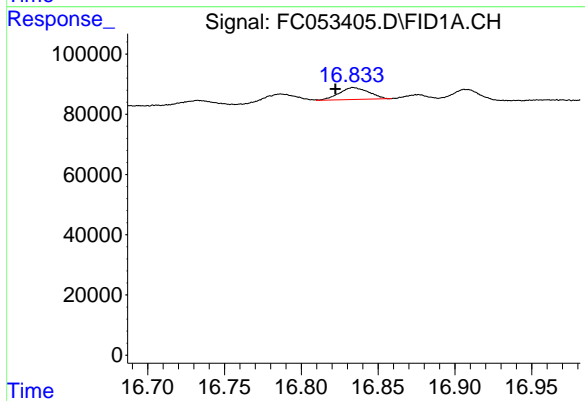
#12 1-chlorooctadecane (SURR)

R.T.: 12.999 min
 Delta R.T.: 0.009 min
 Response: 3870967
 Conc: 35.77 ug/ml



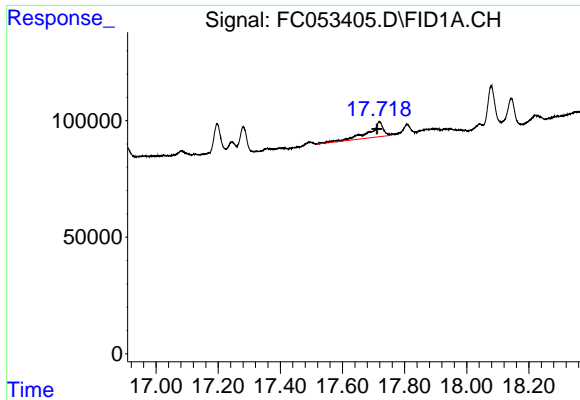
#15 n-Hexacosane (C26)

R.T.: 15.840 min
 Delta R.T.: -0.032 min
 Response: 114034
 Conc: 0.89 ug/ml



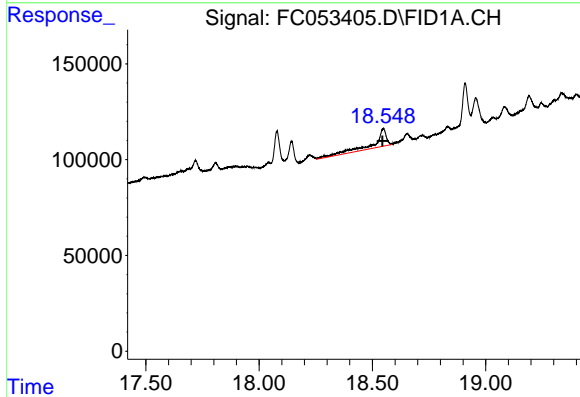
#16 n-Octacosane (C28)

R.T.: 16.834 min
 Delta R.T.: 0.012 min
 Response: 52780
 Conc: 0.41 ug/ml

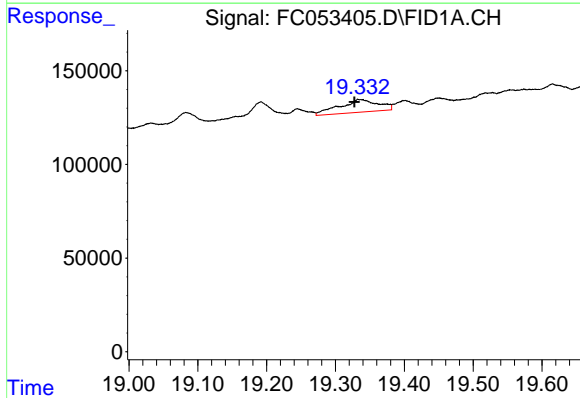


#17 n-Tricontane (C30)
 R.T.: 17.719 min
 Delta R.T.: 0.008 min
 Response: 214151
 Conc: 1.59 ug/ml

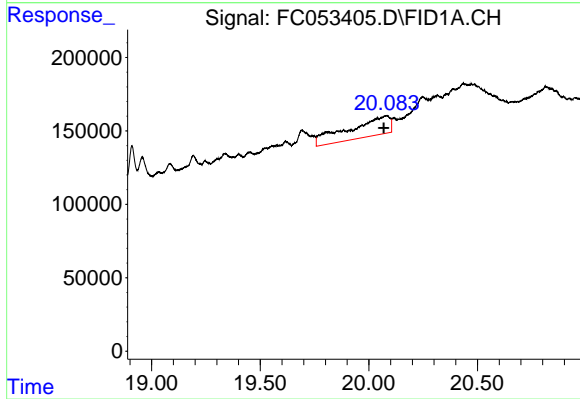
Instrument :
 FID_C
 ClientSampleId :



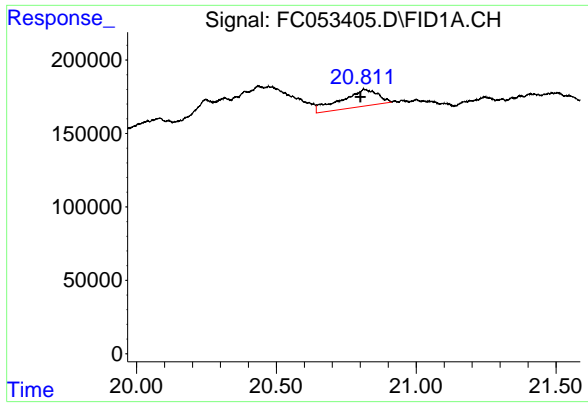
#18 n-Dotriacontane (C32)
 R.T.: 18.548 min
 Delta R.T.: 0.004 min
 Response: 366516
 Conc: 2.67 ug/ml



#19 n-Tetratriacontane (C34)
 R.T.: 19.336 min
 Delta R.T.: 0.009 min
 Response: 265346
 Conc: 2.03 ug/ml



#20 n-Hexatriacontane (C36)
 R.T.: 20.083 min
 Delta R.T.: 0.016 min
 Response: 1749589
 Conc: 14.45 ug/ml



#21 n-Octatriacontane (C38)

R.T.: 20.813 min
Delta R.T.: 0.013 min
Response: 1058347
Conc: 10.04 ug/ml

Instrument :
FID_C
ClientSampleId :