

Data Path : Z:\pestpcbsrv\HPCHEM1\FID_C\Data\FC043024AL\
 Data File : FC066265.D
 Signal(s) : FID1A.ch
 Acq On : 30 Apr 2024 17:59
 Operator : YP/AJ
 Sample : P2311-03
 Misc :
 ALS Vial : 9 Sample Multiplier: 1

Instrument :
 FID_C
 ClientSampleId :
 1

Integration File: autoint1.e
 Quant Time: May 01 03:06:48 2024
 Quant Method : Z:\pestpcbsrv\HPCHEM1\FID_C\Method\Aliphatic EPH 041524.M
 Quant Title : GC Extractables
 QLast Update : Tue Apr 16 08:19:15 2024
 Response via : Initial Calibration
 Integrator: ChemStation

Volume Inj. : 1 ul
 Signal Phase : Rxi-1ms
 Signal Info : 20M x 0.18mm x 0.18um

Compound	R.T.	Response	Conc Units

System Monitoring Compounds			
9) S ortho-Terphenyl (SURR)	11.563	3286706	23.801 ug/ml
Spiked Amount	50.000	Recovery	= 47.60%
12) S 1-chlorooctadecane (S...	13.003	2477546	25.249 ug/ml
Spiked Amount	50.000	Recovery	= 50.50%

Target Compounds

(f)=RT Delta > 1/2 Window

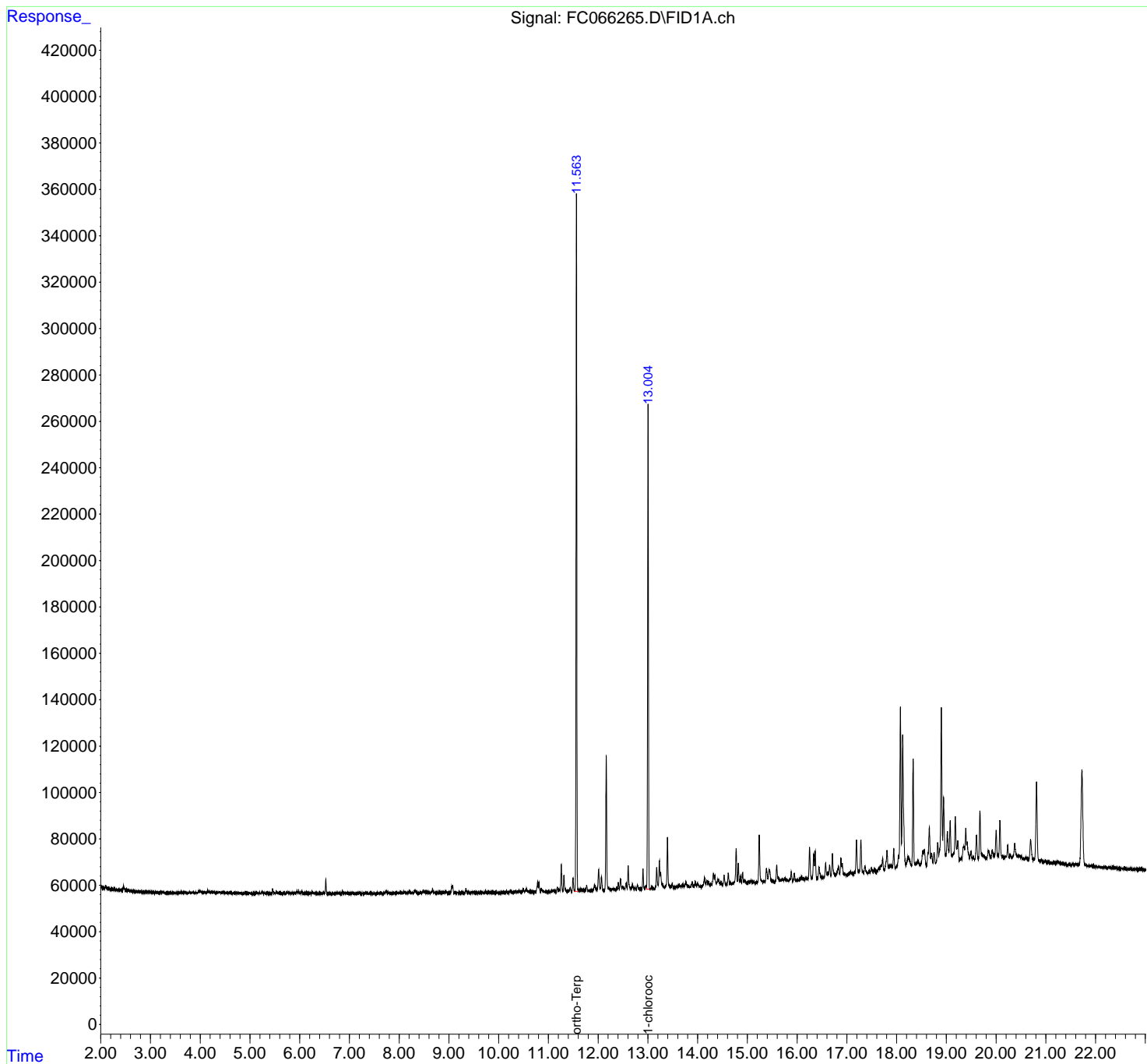
(m)=manual int.

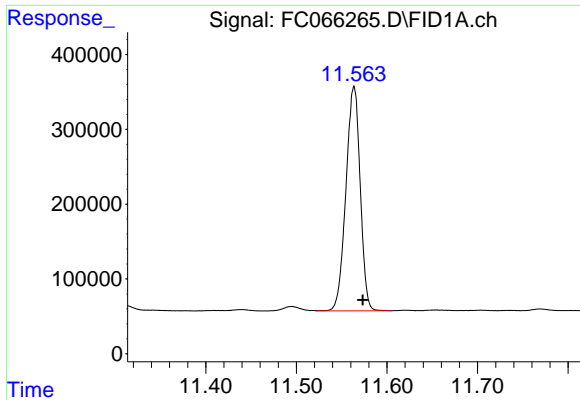
Data Path : Z:\pestpcbsrv\HPCHEM1\FID_C\Data\FC043024AL\
 Data File : FC066265.D
 Signal(s) : FID1A.ch
 Acq On : 30 Apr 2024 17:59
 Operator : YP/AJ
 Sample : P2311-03
 Misc :
 ALS Vial : 9 Sample Multiplier: 1

Instrument :
 FID_C
 ClientSampleId :
 1

Integration File: autoint1.e
 Quant Time: May 01 03:06:48 2024
 Quant Method : Z:\pestpcbsrv\HPCHEM1\FID_C\Method\Aliphatic EPH 041524.M
 Quant Title : GC Extractables
 QLast Update : Tue Apr 16 08:19:15 2024
 Response via : Initial Calibration
 Integrator: ChemStation

Volume Inj. : 1 ul
 Signal Phase : Rxi-1ms
 Signal Info : 20M x 0.18mm x 0.18um

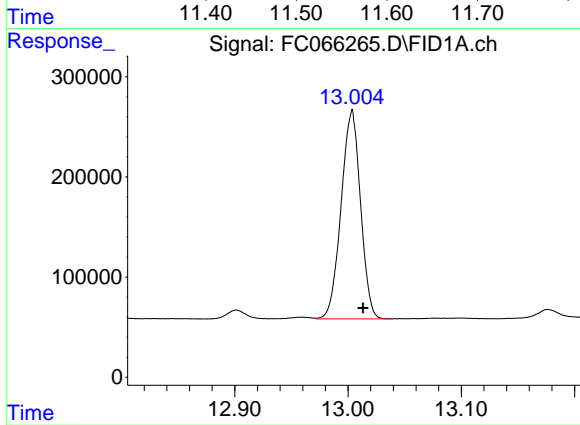




#9 ortho-Terphenyl (SURR)

R.T.: 11.563 min
Delta R.T.: -0.010 min
Response: 3286706
Conc: 23.80 ug/ml

Instrument :
FID_C
ClientSampleId :
1



#12 1-chlorooctadecane (SURR)

R.T.: 13.003 min
Delta R.T.: -0.010 min
Response: 2477546
Conc: 25.25 ug/ml