

Data Path : Z:\pestpcbsrv\HPCHEM1\FID_D\Data\FD050119AL\
 Data File : FD029098.D
 Signal(s) : FID2B.CH
 Acq On : 01 May 2019 22:47
 Operator : AJ\SJ
 Sample : 20 PPM ALIPHATIC HC STD
 Misc :
 ALS Vial : 52 Sample Multiplier: 1

Integration File: autoint1.e
 Quant Time: May 02 03:50:37 2019
 Quant Method : Z:\pestpcbsrv\HPCHEM1\FID_D\methods\Alaphatic EPH 041919.M
 Quant Title : GC Extractables
 QLast Update : Fri Apr 19 04:21:42 2019
 Response via : Initial Calibration
 Integrator: ChemStation 6890 Scale Mode: Large solvent peaks clipped

Volume Inj. : 1 ul
 Signal Phase : Rxi-1ms
 Signal Info : 20M x 0.18mm x 0.18um

| Compound | R.T. | Response | Conc Units |
|--------------------------------|--------|----------|--------------|
| ----- | | | |
| System Monitoring Compounds | | | |
| 9) S ortho-Terphenyl (SURR) | 10.994 | 1867181 | 17.968 ug/ml |
| Spiked Amount | 50.000 | Recovery | = 35.94% |
| 12) S 1-chlorooctadecane (S... | 12.416 | 1511989 | 17.561 ug/ml |
| Spiked Amount | 50.000 | Recovery | = 35.12% |
| Target Compounds | | | |
| 1) T n-Nonane (C9) | 2.842 | 1551577 | 18.780 ug/ml |
| 2) T n-Decane (C10) | 3.862 | 1623155 | 19.043 ug/ml |
| 3) T A~Naphthalene (C11.7) | 5.435 | 1881659 | 19.499 ug/ml |
| 4) T n-Dodecane (C12) | 5.853 | 1703959 | 19.364 ug/ml |
| 5) T A~2-methylnaphthalene... | 6.483 | 1918778 | 19.466 ug/ml |
| 6) T n-Tetradecane (C14) | 7.641 | 1758496 | 18.901 ug/ml |
| 7) T n-Hexadecane (C16) | 9.234 | 1751833 | 18.069 ug/ml |
| 8) T n-Octadecane (C18) | 10.670 | 1732371 | 17.342 ug/ml |
| 10) T n-Eicosane (C20) | 11.972 | 1728850 | 17.273 ug/ml |
| 11) T n-Heneicosane (C21) | 12.580 | 1715409 | 17.546 ug/ml |
| 13) T n-Docosane (C22) | 13.163 | 1717815 | 17.606 ug/ml |
| 14) T n-Tetracosane (C24) | 14.259 | 1725641 | 17.662 ug/ml |
| 15) T n-Hexacosane (C26) | 15.273 | 1729161 | 17.853 ug/ml |
| 16) T n-Octacosane (C28) | 16.216 | 1739267 | 18.264 ug/ml |
| 17) T n-Tricontane (C30) | 17.097 | 1698983 | 18.037 ug/ml |
| 18) T n-Dotriacontane (C32) | 17.923 | 1625589 | 17.582 ug/ml |
| 19) T n-Tetratriacontane (C34) | 18.724 | 1475493 | 18.685 ug/ml |
| 20) T n-Hexatriacontane (C36) | 19.715 | 1224554 | 17.450 ug/ml |
| 21) T n-Octatriacontane (C38) | 21.053 | 1167768 | 17.583 ug/ml |
| 22) T n-Tetracontane (C40) | 22.911 | 1221594 | 18.468 ug/ml |
| ----- | | | |

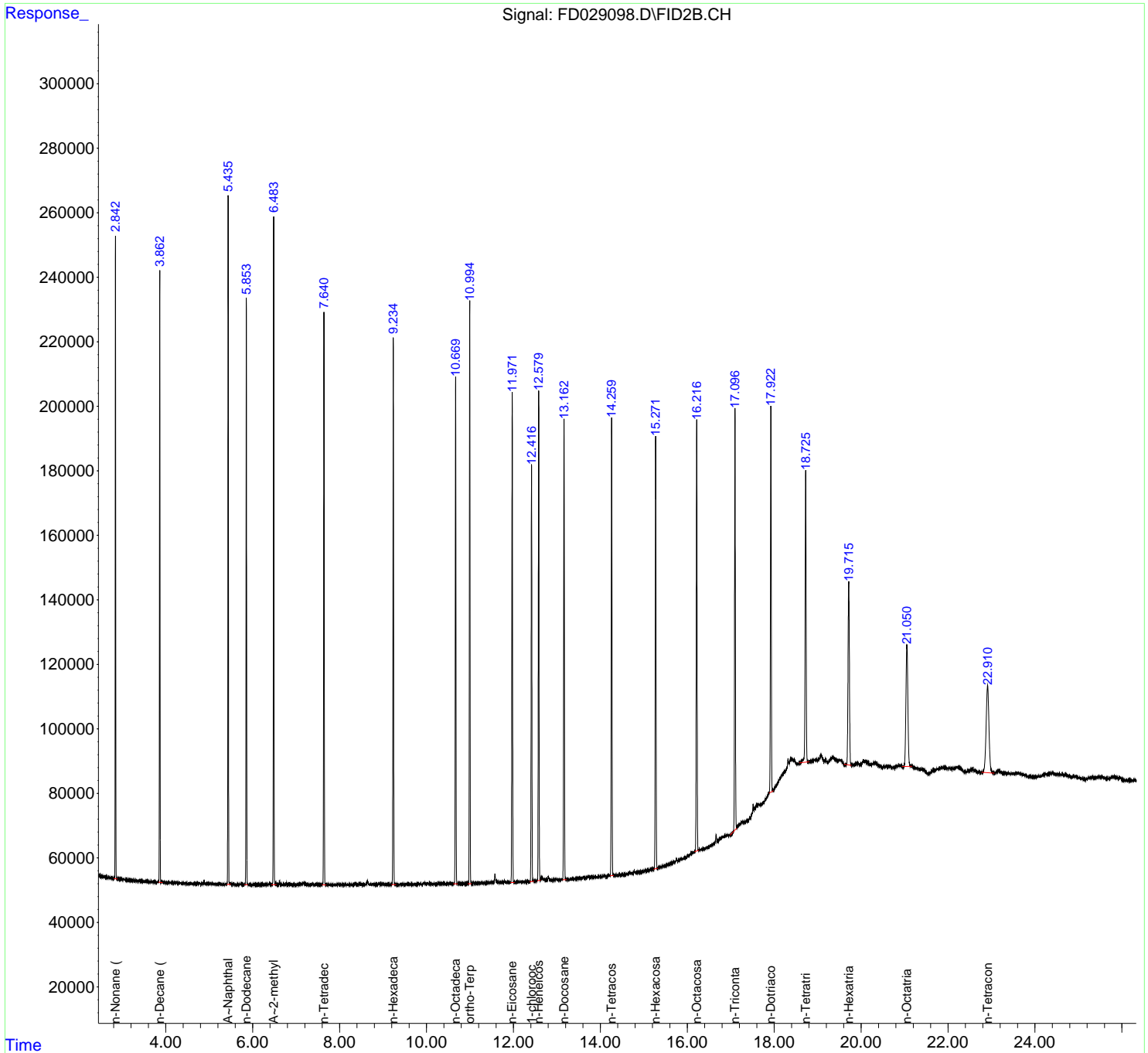
(f)=RT Delta > 1/2 Window

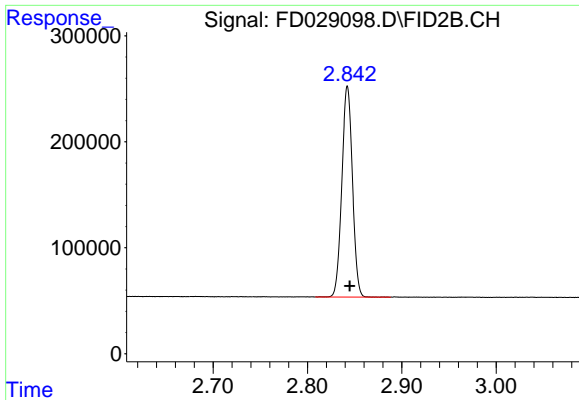
(m)=manual int.

Data Path : Z:\pestpcbsrv\HPCHEM1\FID_D\Data\FD050119AL\
 Data File : FD029098.D
 Signal(s) : FID2B.CH
 Acq On : 01 May 2019 22:47
 Operator : AJ\SJ
 Sample : 20 PPM ALIPHATIC HC STD
 Misc :
 ALS Vial : 52 Sample Multiplier: 1

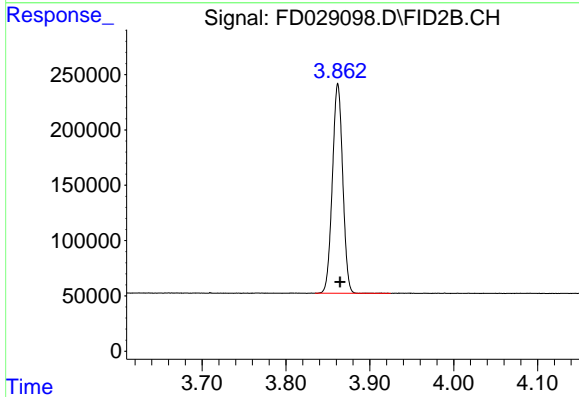
Integration File: autoint1.e
 Quant Time: May 02 03:50:37 2019
 Quant Method : Z:\pestpcbsrv\HPCHEM1\FID_D\methods\Aliphatic EPH 041919.M
 Quant Title : GC Extractables
 QLast Update : Fri Apr 19 04:21:42 2019
 Response via : Initial Calibration
 Integrator: ChemStation 6890 Scale Mode: Large solvent peaks clipped

Volume Inj. : 1 ul
 Signal Phase : Rxi-1ms
 Signal Info : 20M x 0.18mm x 0.18um

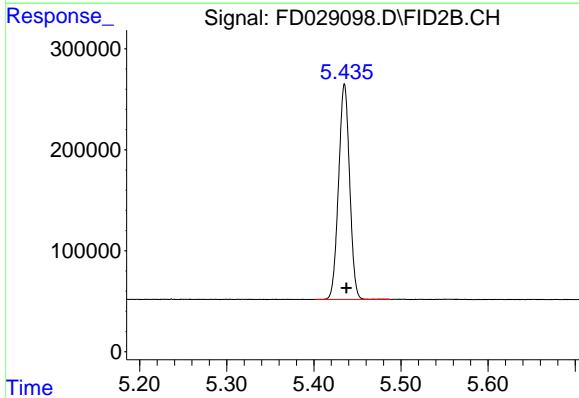




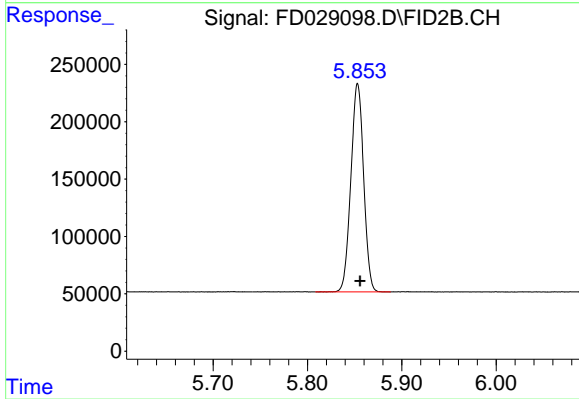
#1 n-Nonane (C9)
R.T.: 2.842 min
Delta R.T.: -0.003 min
Response: 1551577
Conc: 18.78 ug/ml



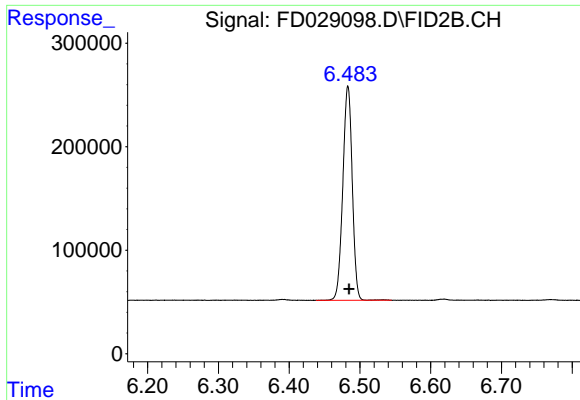
#2 n-Decane (C10)
R.T.: 3.862 min
Delta R.T.: -0.003 min
Response: 1623155
Conc: 19.04 ug/ml



#3 A~Naphthalene (C11.7)
R.T.: 5.435 min
Delta R.T.: -0.002 min
Response: 1881659
Conc: 19.50 ug/ml

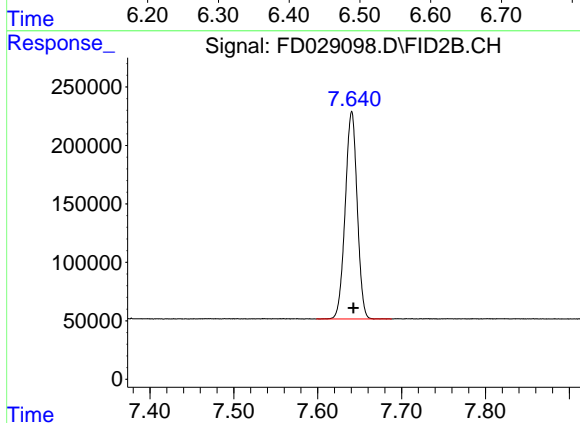


#4 n-Dodecane (C12)
R.T.: 5.853 min
Delta R.T.: -0.002 min
Response: 1703959
Conc: 19.36 ug/ml



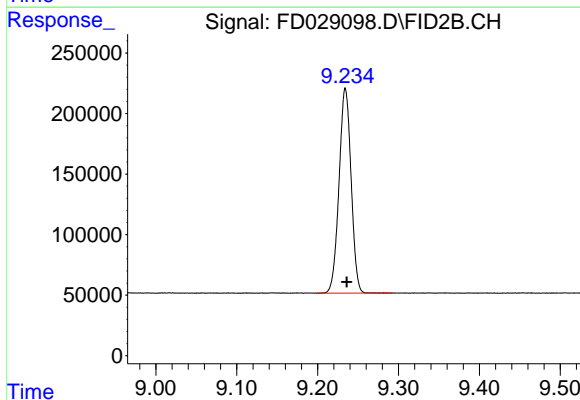
#5 A~2-methylnaphthalene (C12.89)

R.T.: 6.483 min
Delta R.T.: -0.002 min
Response: 1918778
Conc: 19.47 ug/ml



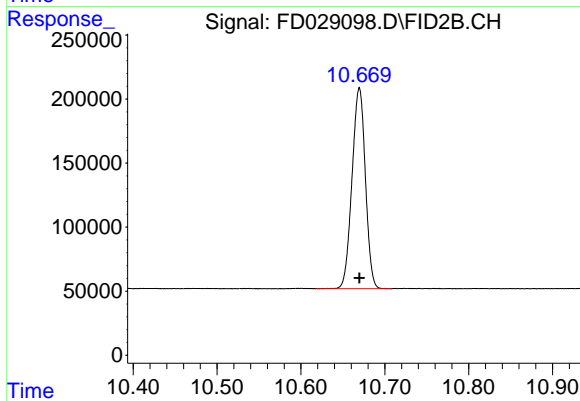
#6 n-Tetradecane (C14)

R.T.: 7.641 min
Delta R.T.: -0.002 min
Response: 1758496
Conc: 18.90 ug/ml



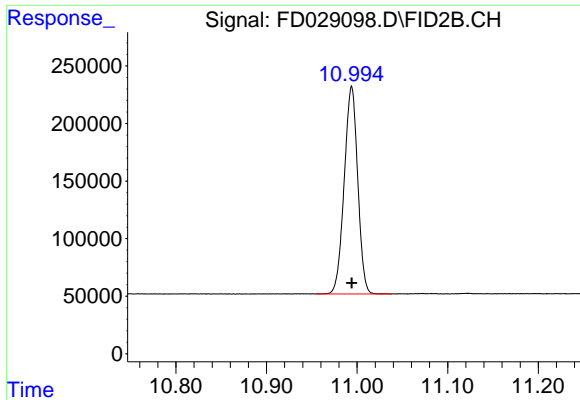
#7 n-Hexadecane (C16)

R.T.: 9.234 min
Delta R.T.: -0.002 min
Response: 1751833
Conc: 18.07 ug/ml



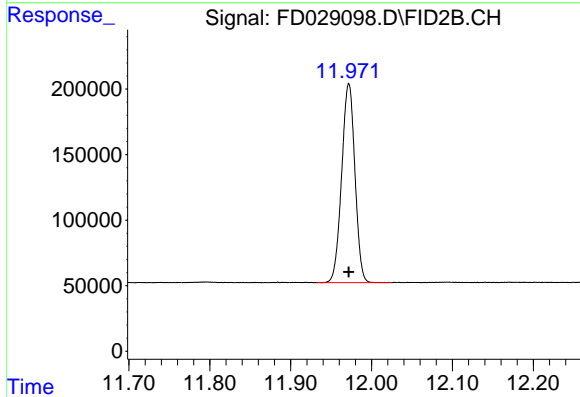
#8 n-Octadecane (C18)

R.T.: 10.670 min
Delta R.T.: 0.000 min
Response: 1732371
Conc: 17.34 ug/ml



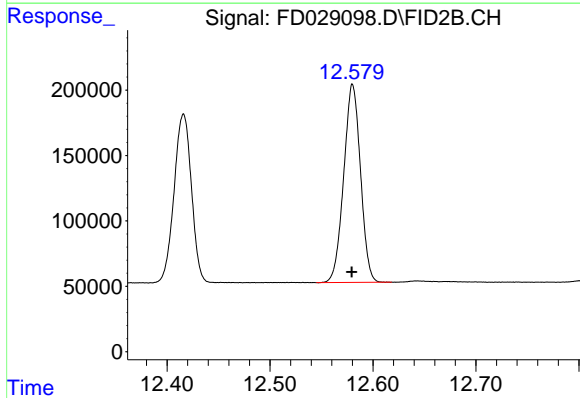
#9 ortho-Terphenyl (SURR)

R.T.: 10.994 min
Delta R.T.: 0.000 min
Response: 1867181
Conc: 17.97 ug/ml



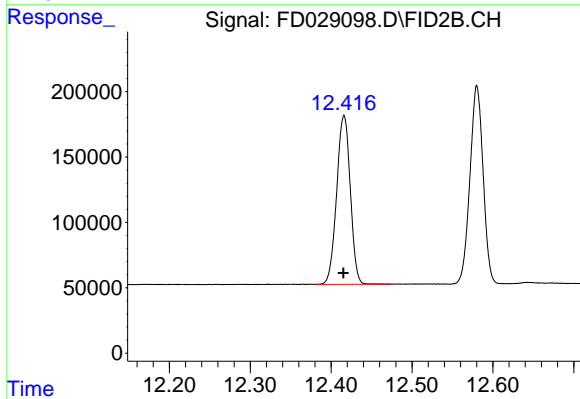
#10 n-Eicosane (C20)

R.T.: 11.972 min
Delta R.T.: 0.000 min
Response: 1728850
Conc: 17.27 ug/ml



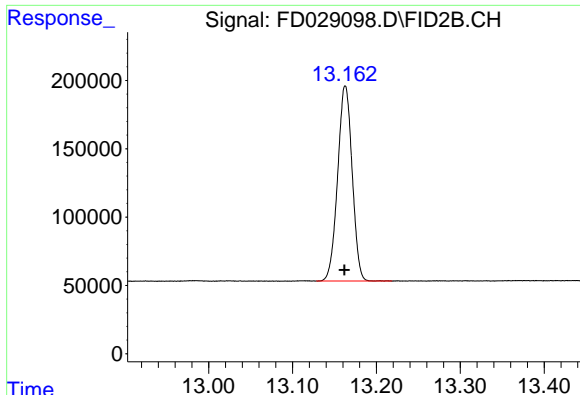
#11 n-Heneicosane (C21)

R.T.: 12.580 min
Delta R.T.: 0.000 min
Response: 1715409
Conc: 17.55 ug/ml



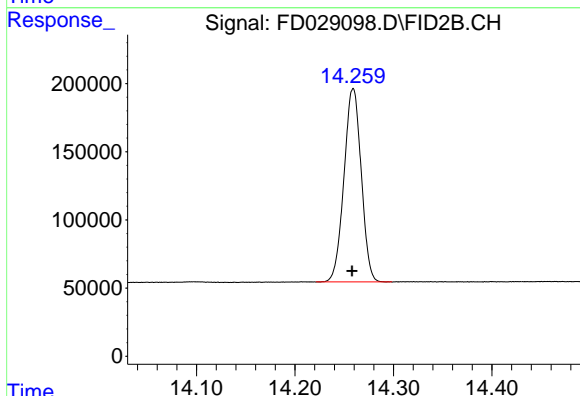
#12 1-chlorooctadecane (SURR)

R.T.: 12.416 min
Delta R.T.: 0.000 min
Response: 1511989
Conc: 17.56 ug/ml



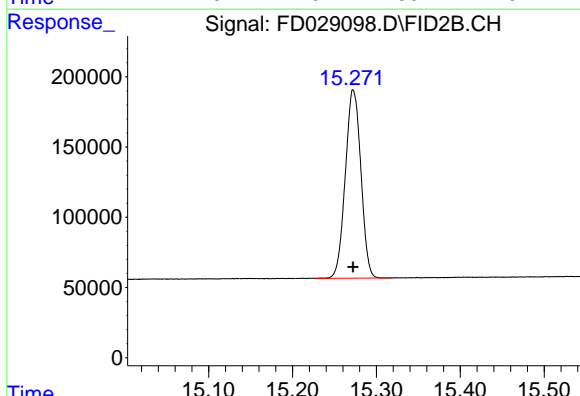
#13 n-Docosane (C22)

R.T.: 13.163 min
Delta R.T.: 0.001 min
Response: 1717815
Conc: 17.61 ug/ml



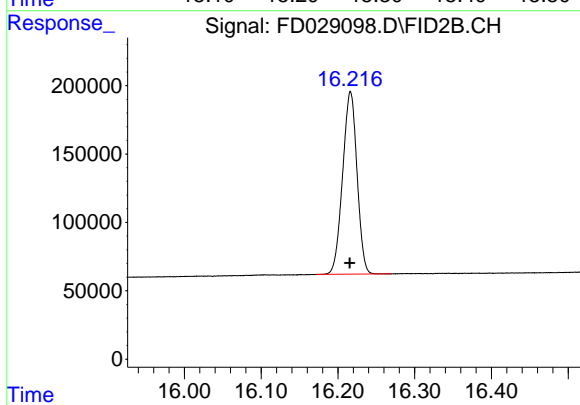
#14 n-Tetracosane (C24)

R.T.: 14.259 min
Delta R.T.: 0.000 min
Response: 1725641
Conc: 17.66 ug/ml



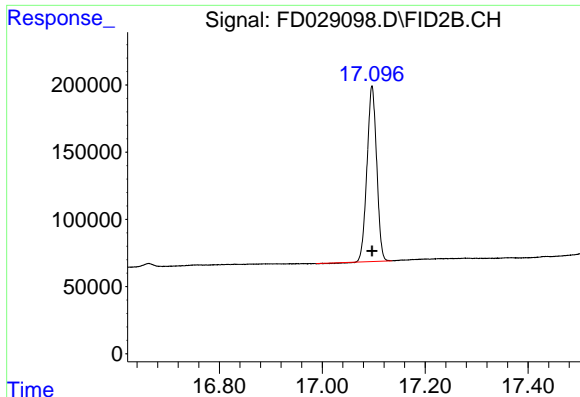
#15 n-Hexacosane (C26)

R.T.: 15.273 min
Delta R.T.: 0.000 min
Response: 1729161
Conc: 17.85 ug/ml



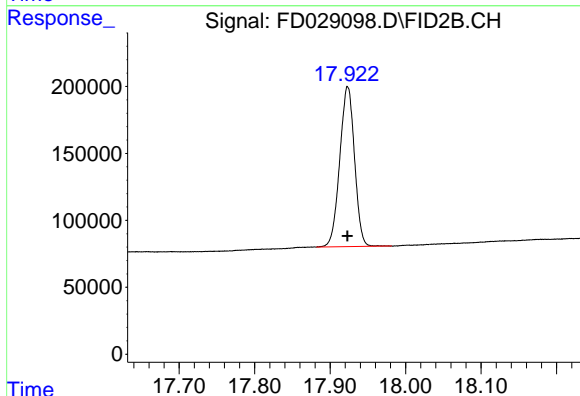
#16 n-Octacosane (C28)

R.T.: 16.216 min
Delta R.T.: 0.000 min
Response: 1739267
Conc: 18.26 ug/ml



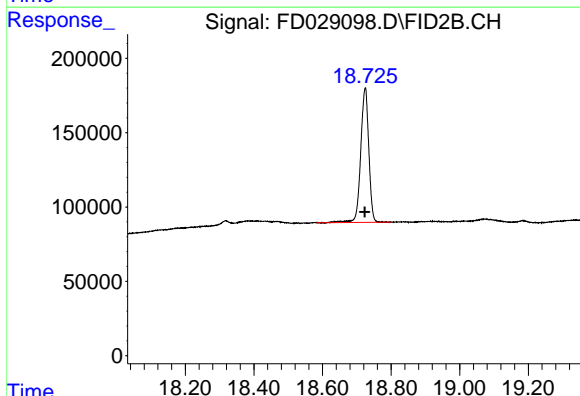
#17 n-Tricontane (C30)

R.T.: 17.097 min
Delta R.T.: 0.000 min
Response: 1698983
Conc: 18.04 ug/ml



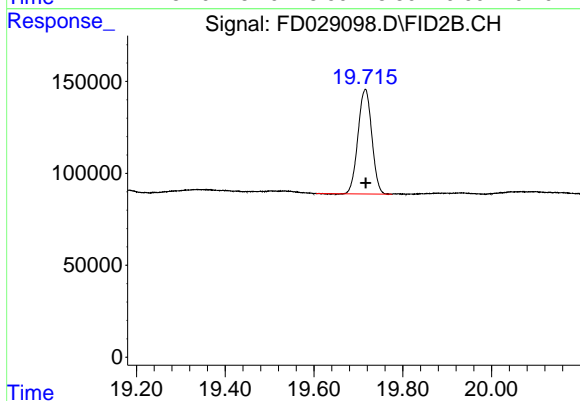
#18 n-Dotriacontane (C32)

R.T.: 17.923 min
Delta R.T.: 0.000 min
Response: 1625589
Conc: 17.58 ug/ml



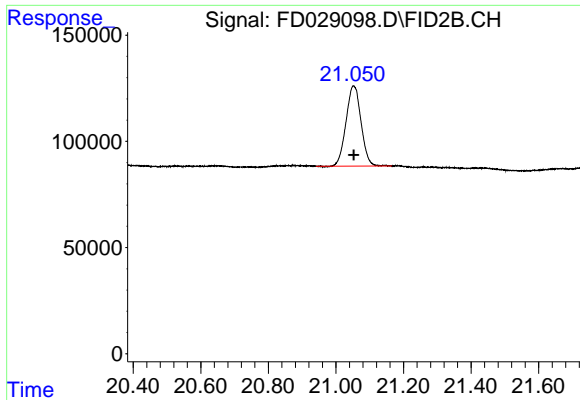
#19 n-Tetratriacontane (C34)

R.T.: 18.724 min
Delta R.T.: 0.001 min
Response: 1475493
Conc: 18.69 ug/ml



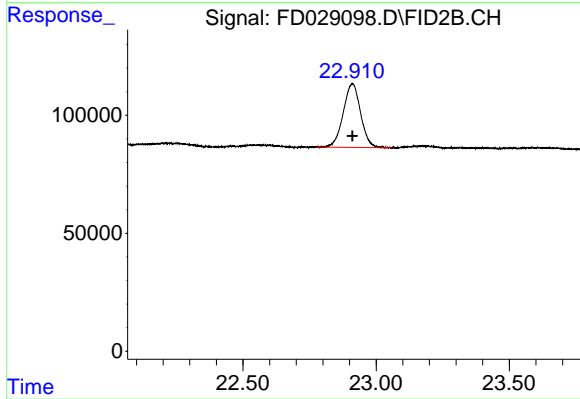
#20 n-Hexatriacontane (C36)

R.T.: 19.715 min
Delta R.T.: -0.001 min
Response: 1224554
Conc: 17.45 ug/ml



#21 n-Octatriacontane (C38)

R.T.: 21.053 min
Delta R.T.: 0.000 min
Response: 1167768
Conc: 17.58 ug/ml



#22 n-Tetracontane (C40)

R.T.: 22.911 min
Delta R.T.: 0.000 min
Response: 1221594
Conc: 18.47 ug/ml