

Data Path : Z:\pestpcbsrv\HPCHEM1\FID_C\Data\FC050323AL\
 Data File : FC063537.D
 Signal(s) : FID1A.ch
 Acq On : 03 May 2023 20:48
 Operator : YP/AJ
 Sample : 02567-02D
 Misc :
 ALS Vial : 11 Sample Multiplier: 1

Instrument :
 FID_C
ClientSampleId :
 B-21-SB02

Integration File: autoint1.e
 Quant Time: May 04 03:38:59 2023
 Quant Method : Z:\pestpcbsrv\HPCHEM1\FID_C\Method\Aliphatic EPH 050223.M
 Quant Title : GC Extractables
 QLast Update : Wed May 03 00:33:18 2023
 Response via : Initial Calibration
 Integrator: ChemStation

Volume Inj. : 1 ul
 Signal Phase : Rxi-1ms
 Signal Info : 20M x 0.18mm x 0.18um

Compound	R.T.	Response	Conc Units

System Monitoring Compounds			
12) S 1-chlorooctadecane (S...	12.970	6985264	64.679 ug/ml
Spiked Amount	50.000	Recovery	= 129.36%

Target Compounds

(f)=RT Delta > 1/2 Window

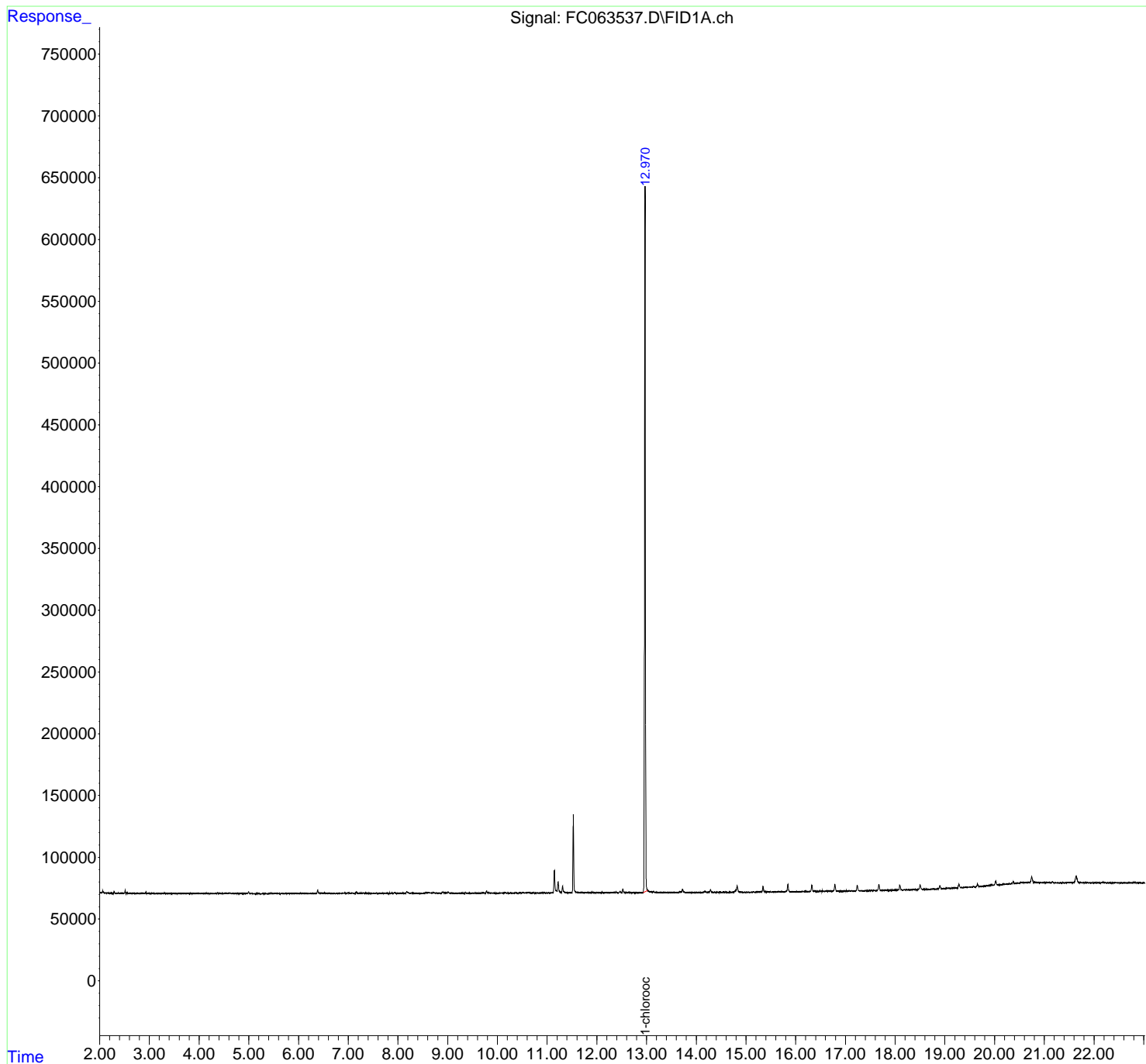
(m)=manual int.

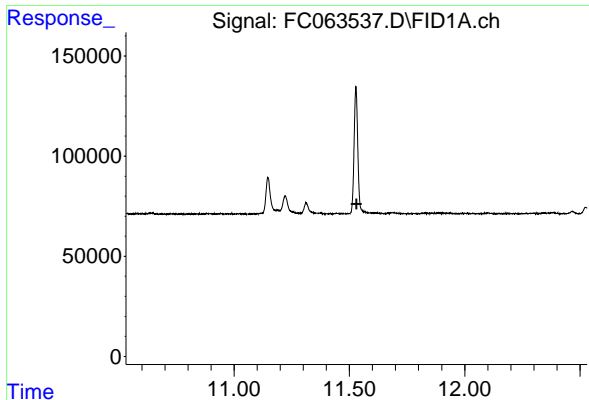
Data Path : Z:\pestpcbsrv\HPCHEM1\FID_C\Data\FC050323AL\
 Data File : FC063537.D
 Signal(s) : FID1A.ch
 Acq On : 03 May 2023 20:48
 Operator : YP/AJ
 Sample : 02567-02D
 Misc :
 ALS Vial : 11 Sample Multiplier: 1

Instrument :
 FID_C
 ClientSampleId :
 B-21-SB02

Integration File: autoint1.e
 Quant Time: May 04 03:38:59 2023
 Quant Method : Z:\pestpcbsrv\HPCHEM1\FID_C\Method\Aliphatic EPH 050223.M
 Quant Title : GC Extractables
 QLast Update : Wed May 03 00:33:18 2023
 Response via : Initial Calibration
 Integrator: ChemStation

Volume Inj. : 1 ul
 Signal Phase : Rxi-1ms
 Signal Info : 20M x 0.18mm x 0.18um

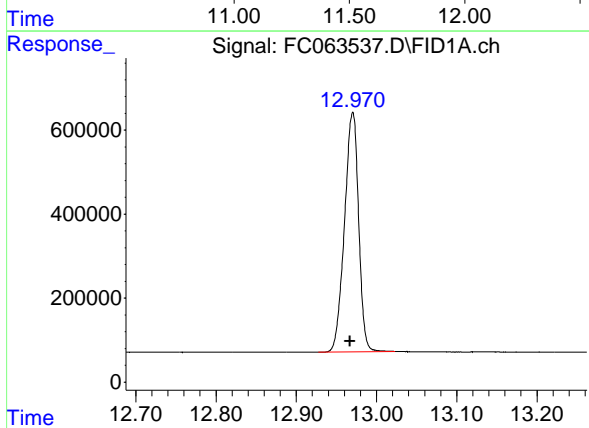




#9 ortho-Terphenyl (SURRE)

R.T.: 0.000 min
 Exp R.T.: 11.531 min
 Response: 0
 Conc: N.D.

Instrument :
 FID_C
 ClientSampleId :
 B-21-SB02



#12 1-chlorooctadecane (SURRE)

R.T.: 12.970 min
 Delta R.T.: 0.004 min
 Response: 6985264
 Conc: 64.68 ug/ml