

Data Path : Z:\pestpcbsrv\HPCHEM1\FID_C\Data\FC050420AL\
 Data File : FC047234.D
 Signal(s) : FID1A.CH
 Acq On : 04 May 2020 15:58
 Operator : DD\AJ
 Sample : PB128597BL
 Misc :
 ALS Vial : 12 Sample Multiplier: 1

Instrument :
 FID_C
 ClientSampleId :
 PB128597BL

Integration File: autoint1.e
 Quant Time: May 05 02:30:02 2020
 Quant Method : Z:\pestpcbsrv\HPCHEM1\FID_C\Method\Alaphatic EPH 042320.M
 Quant Title : GC Extractables
 QLast Update : Thu Apr 23 16:30:34 2020
 Response via : Initial Calibration
 Integrator: ChemStation 6890 Scale Mode: Large solvent peaks clipped

Volume Inj. : 1 ul
 Signal Phase : Rxi-1ms
 Signal Info : 20M x 0.18mm x 0.18um

Compound	R.T.	Response	Conc Units
System Monitoring Compounds			
9) S ortho-Terphenyl (SURR)	11.754	2625641	23.596 ug/ml
Spiked Amount	50.000	Recovery =	47.19%
12) S 1-chlorooctadecane (S...	13.169	1942758	21.754 ug/ml
Spiked Amount	50.000	Recovery =	43.51%

Target Compounds

(f)=RT Delta > 1/2 Window

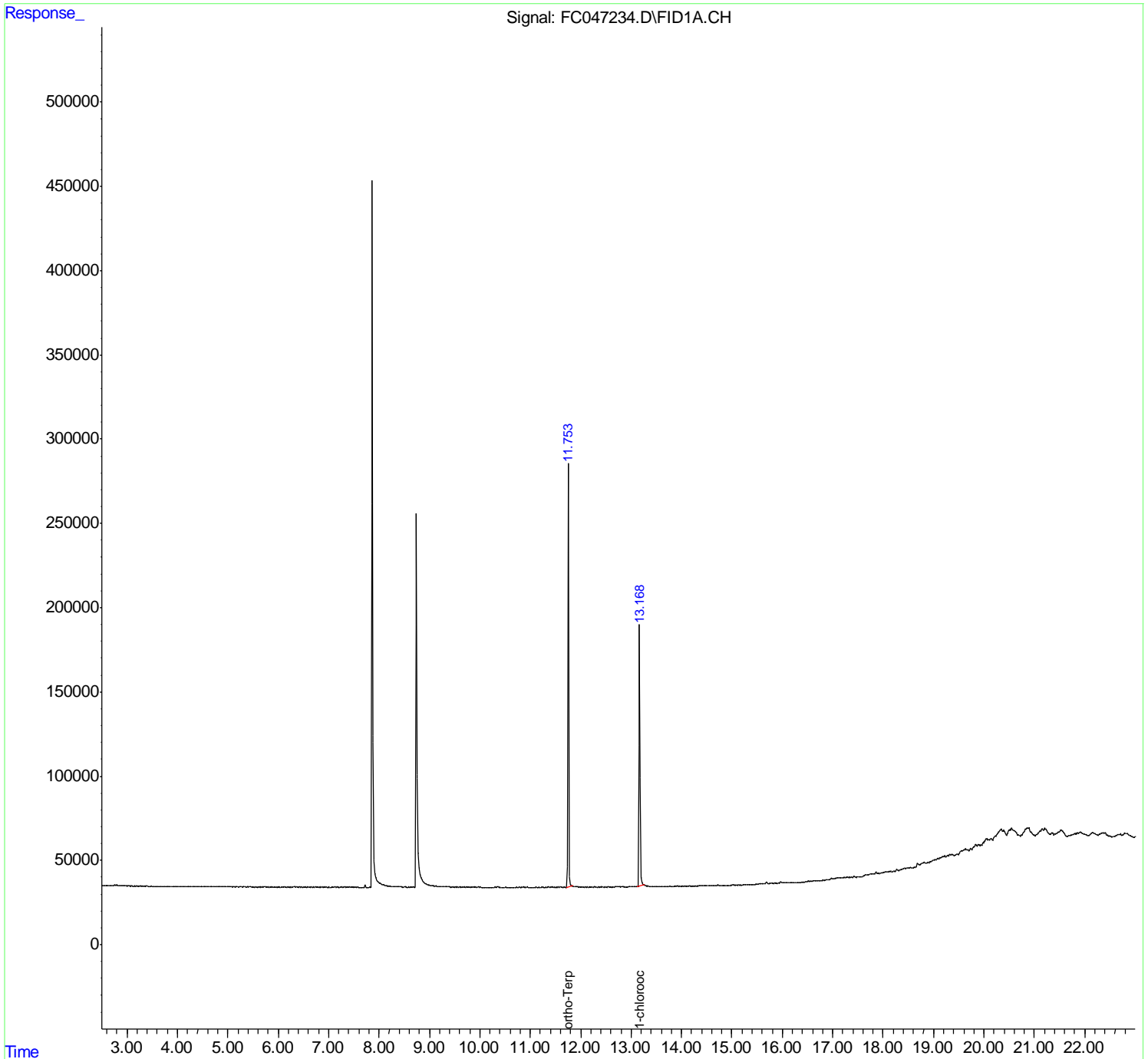
(m)=manual int.

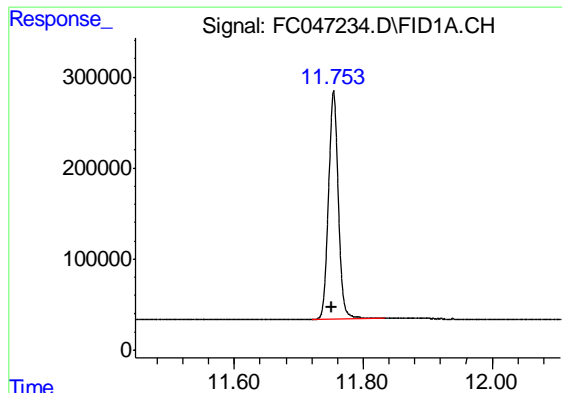
Data Path : Z:\pestpcbsrv\HPCHEM1\FID_C\Data\FC050420AL\
Data File : FC047234.D
Signal(s) : FID1A.CH
Acq On : 04 May 2020 15:58
Operator : DD\AJ
Sample : PB128597BL
Misc :
ALS Vial : 12 Sample Multiplier: 1

Instrument :
FID_C
ClientSampled :
PB128597BL

Integration File: autoint1.e
Quant Time: May 05 02:30:02 2020
Quant Method : Z:\pestpcbsrv\HPCHEM1\FID_C\Method\Alaphatic EPH 042320.M
Quant Title : GC Extractables
QLast Update : Thu Apr 23 16:30:34 2020
Response via : Initial Calibration
Integrator: ChemStation 6890 Scale Mode: Large solvent peaks clipped

Volume Inj. : 1 ul
Signal Phase : Rxi-1ms
Signal Info : 20M x 0.18mm x 0.18um

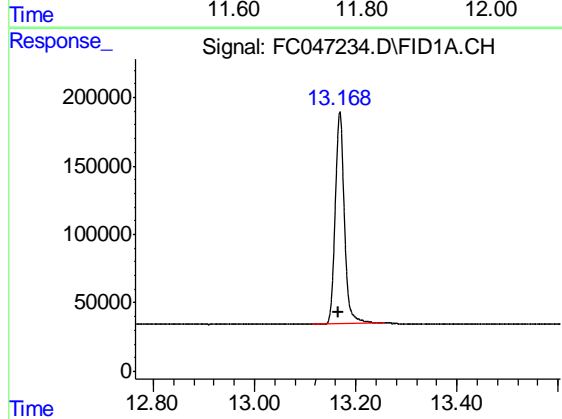




#9 ortho-Terphenyl (SURR)

R.T.: 11.754 min
Delta R.T.: 0.003 min
Response: 2625641
Conc: 23.60 ug/ml

Instrument :
FID_C
ClientSampleId :
PB128597BL



#12 1-chlorooctadecane (SURR)

R.T.: 13.169 min
Delta R.T.: 0.002 min
Response: 1942758
Conc: 21.75 ug/ml