

Data Path : Z:\pestpcbsrv\HPCHEM1\FID_C\Data\FC050423AL\
 Data File : FC063548.D
 Signal(s) : FID1A.ch
 Acq On : 04 May 2023 11:19
 Operator : YP/AJ
 Sample : 02500-17DL 10X
 Misc :
 ALS Vial : 8 Sample Multiplier: 1

Instrument :
 FID_C
 ClientSampleId :

Integration File: autoint1.e
 Quant Time: May 05 02:09:52 2023
 Quant Method : Z:\pestpcbsrv\HPCHEM1\FID_C\Method\Aliphatic EPH 050223.M
 Quant Title : GC Extractables
 QLast Update : Wed May 03 00:33:18 2023
 Response via : Initial Calibration
 Integrator: ChemStation

Volume Inj. : 1 ul
 Signal Phase : Rxi-1ms
 Signal Info : 20M x 0.18mm x 0.18um

Compound	R.T.	Response	Conc Units

System Monitoring Compounds			
12) S 1-chlorooctadecane (S...	12.965	344583	3.191 ug/ml
Spiked Amount 50.000		Recovery =	6.38%
Target Compounds			
1) T n-Nonane (C9)	3.298	520237	3.948 ug/ml
2) T n-Decane (C10)	4.364	1659752	12.509 ug/ml
3) T A~Naphthalene (C11.7)	5.953	418242	3.068 ug/ml
4) T n-Dodecane (C12)	6.383	2228608	16.818 ug/ml
5) T A~2-methylnaphthalene...	6.985	328790	2.566 ug/ml
6) T n-Tetradecane (C14)	8.177	3238689	25.229 ug/ml
7) T n-Hexadecane (C16)	9.777	3057980	23.030 ug/ml
8) T n-Octadecane (C18)	11.215	2231920	16.391 ug/ml
10) T n-Eicosane (C20)	12.522	1223394	9.306 ug/ml
11) T n-Heneicosane (C21)	13.131	745325	5.754 ug/ml
13) T n-Docosane (C22)	13.718	448291	3.474 ug/ml

(f)=RT Delta > 1/2 Window

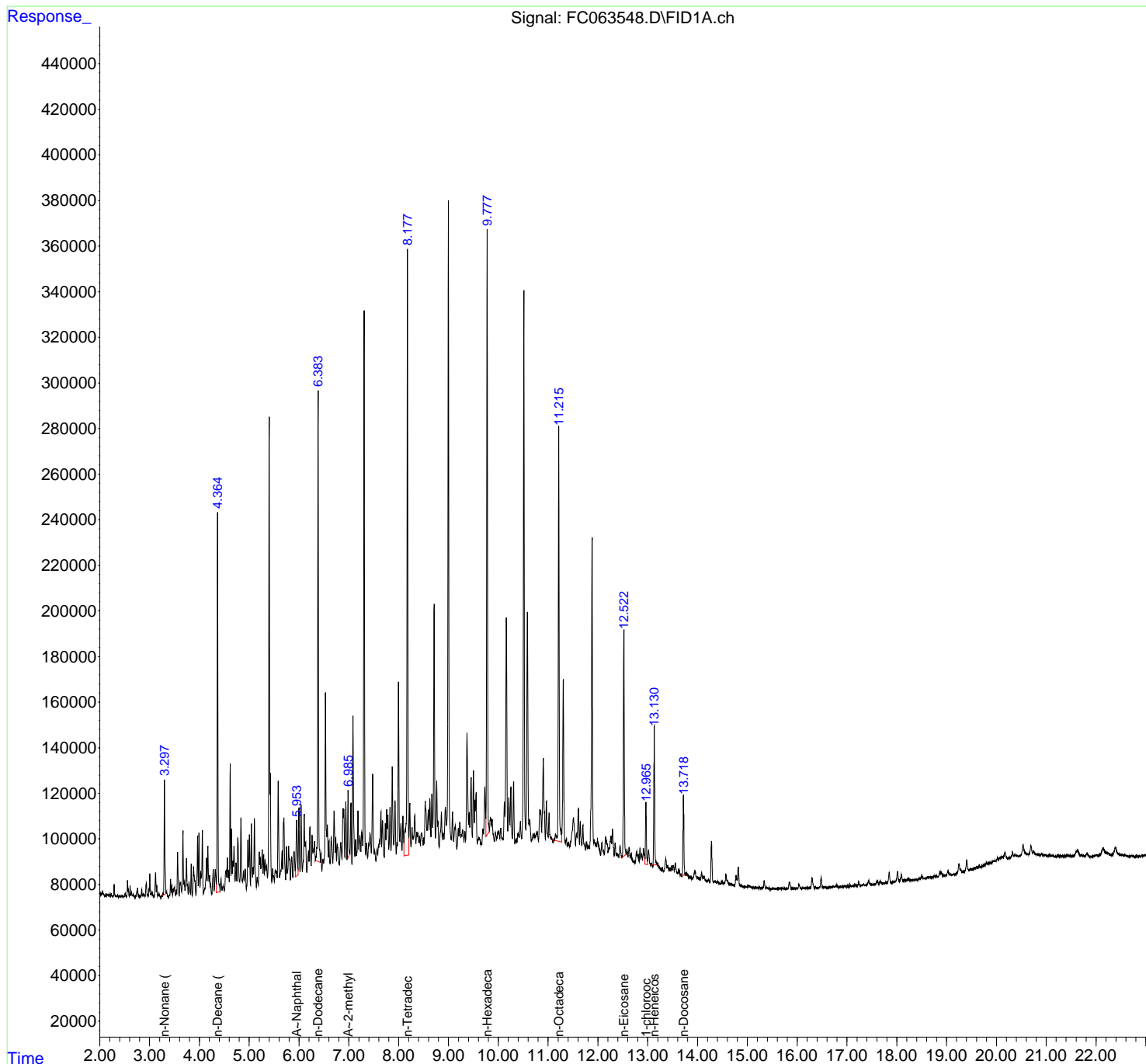
(m)=manual int.

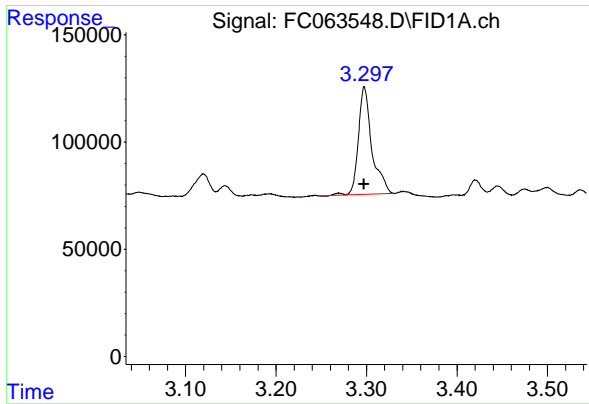
Data Path : Z:\pestpcbsrv\HPCHEM1\FID_C\Data\FC050423AL\
 Data File : FC063548.D
 Signal(s) : FID1A.ch
 Acq On : 04 May 2023 11:19
 Operator : YP/AJ
 Sample : 02500-17DL 10X
 Misc :
 ALS Vial : 8 Sample Multiplier: 1

Instrument :
 FID_C
 ClientSampleId :

Integration File: autoint1.e
 Quant Time: May 05 02:09:52 2023
 Quant Method : Z:\pestpcbsrv\HPCHEM1\FID_C\Method\Aliphatic EPH 050223.M
 Quant Title : GC Extractables
 QLast Update : Wed May 03 00:33:18 2023
 Response via : Initial Calibration
 Integrator: ChemStation

Volume Inj. : 1 ul
 Signal Phase : Rxi-1ms
 Signal Info : 20M x 0.18mm x 0.18um

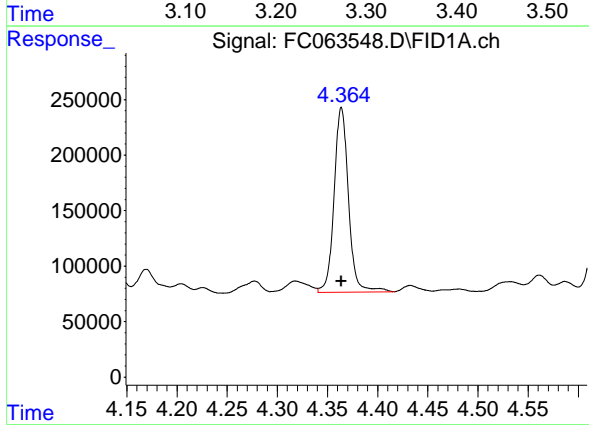




#1 n-Nonane (C9)

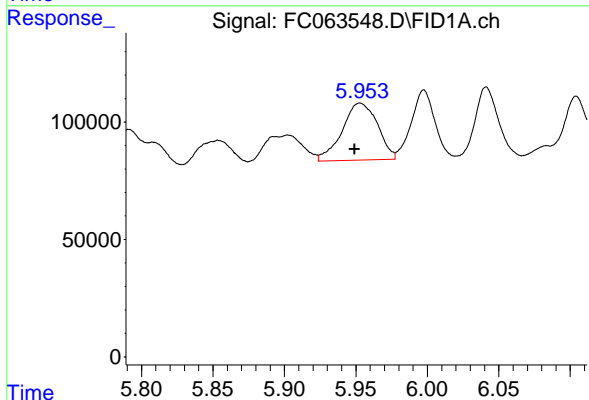
R.T.: 3.298 min
 Delta R.T.: 0.000 min
 Response: 520237
 Conc: 3.95 ug/ml

Instrument :
 FID_C
 ClientSampleId :



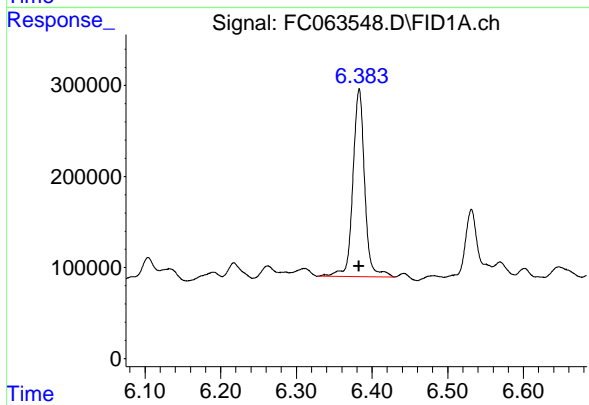
#2 n-Decane (C10)

R.T.: 4.364 min
 Delta R.T.: 0.000 min
 Response: 1659752
 Conc: 12.51 ug/ml



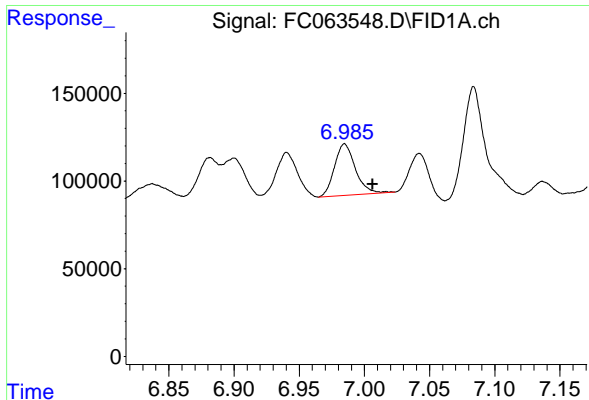
#3 A~Naphthalene (C11.7)

R.T.: 5.953 min
 Delta R.T.: 0.004 min
 Response: 418242
 Conc: 3.07 ug/ml



#4 n-Dodecane (C12)

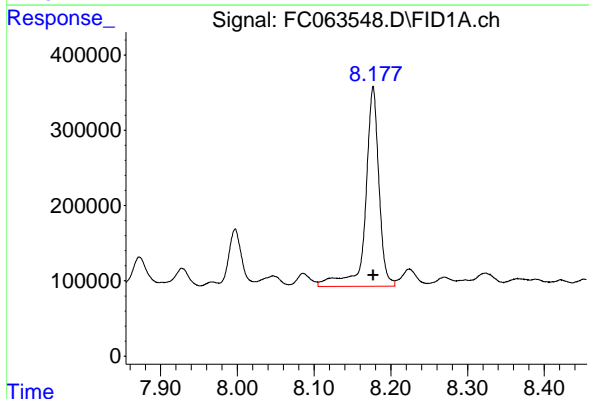
R.T.: 6.383 min
 Delta R.T.: 0.000 min
 Response: 2228608
 Conc: 16.82 ug/ml



#5 A~2-methylnaphthalene (C12.89)

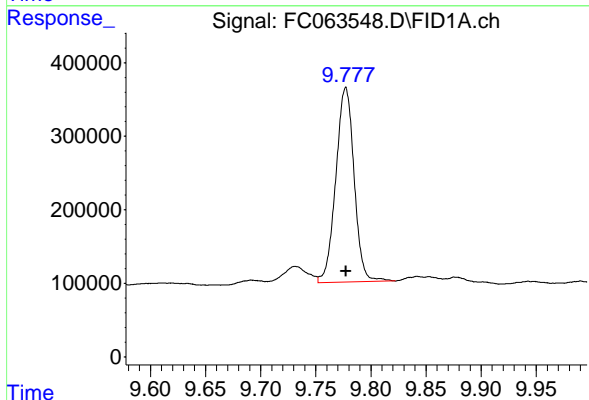
R.T.: 6.985 min
 Delta R.T.: -0.021 min
 Response: 328790
 Conc: 2.57 ug/ml

Instrument :
 FID_C
 ClientSampleId :



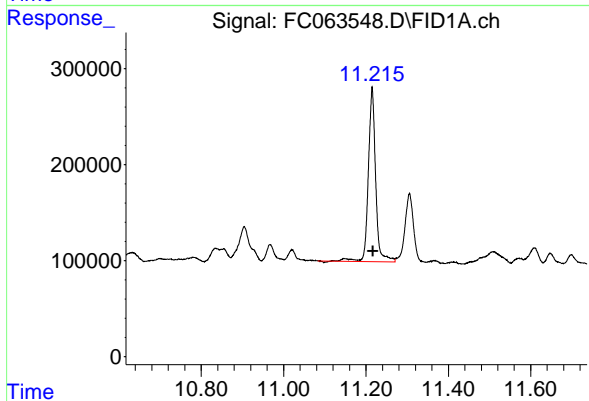
#6 n-Tetradecane (C14)

R.T.: 8.177 min
 Delta R.T.: 0.000 min
 Response: 3238689
 Conc: 25.23 ug/ml



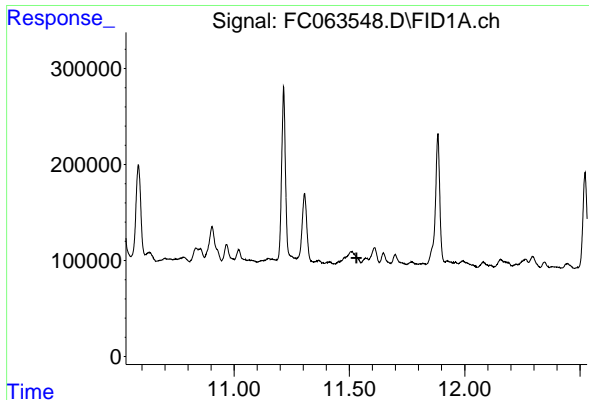
#7 n-Hexadecane (C16)

R.T.: 9.777 min
 Delta R.T.: 0.000 min
 Response: 3057980
 Conc: 23.03 ug/ml



#8 n-Octadecane (C18)

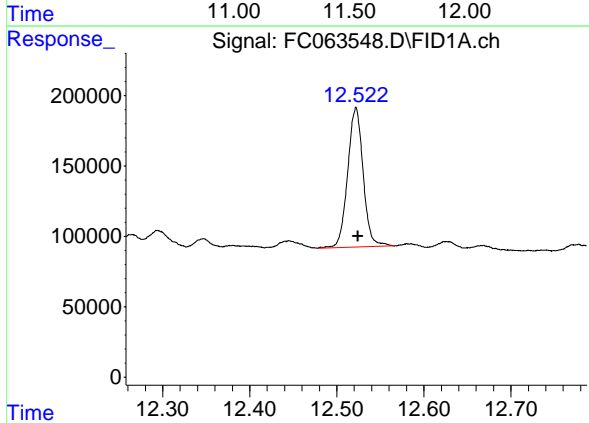
R.T.: 11.215 min
 Delta R.T.: -0.002 min
 Response: 2231920
 Conc: 16.39 ug/ml



#9 ortho-Terphenyl (SURR)

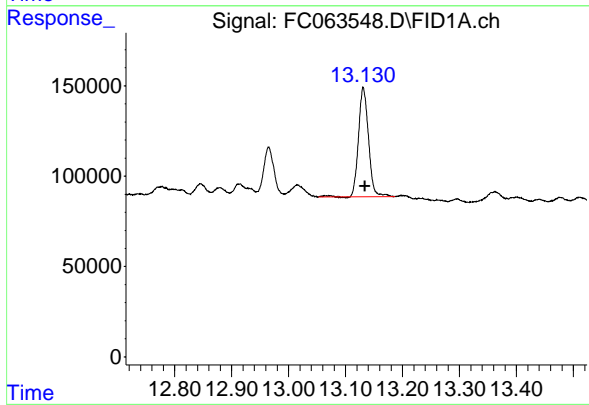
R.T.: 0.000 min
 Exp R.T.: 11.531 min
 Response: 0
 Conc: N.D.

Instrument :
 FID_C
 ClientSampleId :



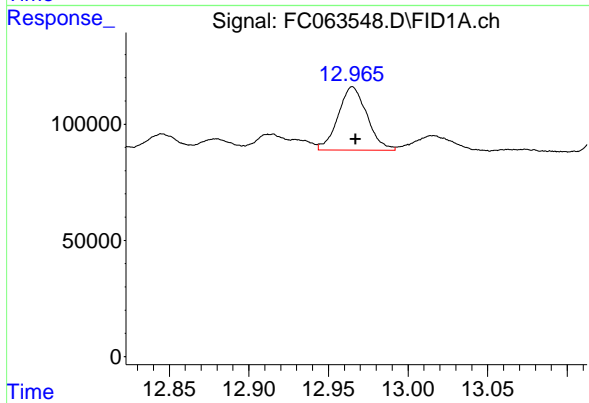
#10 n-Eicosane (C20)

R.T.: 12.522 min
 Delta R.T.: -0.002 min
 Response: 1223394
 Conc: 9.31 ug/ml



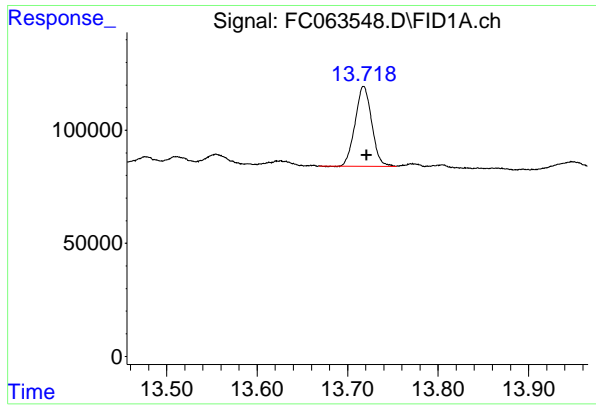
#11 n-Heneicosane (C21)

R.T.: 13.131 min
 Delta R.T.: -0.003 min
 Response: 745325
 Conc: 5.75 ug/ml



#12 1-chlorooctadecane (SURR)

R.T.: 12.965 min
 Delta R.T.: -0.002 min
 Response: 344583
 Conc: 3.19 ug/ml



#13 n-Docosane (C22)

R.T.: 13.718 min

Delta R.T.: -0.004 min

Response: 448291

Conc: 3.47 ug/ml

Instrument :

FID_C

ClientSampleId :