

Data Path : Z:\pestpcbsrv\HPCHEM1\FID\_C\Data\FC050423AL\  
 Data File : FC063545.D  
 Signal(s) : FID1A.ch  
 Acq On : 04 May 2023 09:15  
 Operator : YP/AJ  
 Sample : 20 PPM ALIPHATIC HC STD  
 Misc :  
 ALS Vial : 2 Sample Multiplier: 1

Instrument :  
 FID\_C  
 ClientSampleId :  
 20 PPM ALIPHATIC HC STD

Manual Integrations  
 APPROVED

Reviewed By :Yogesh Patel 05/05/2023  
 Supervised By :Ankita Jodhani 05/05/2023

Integration File: autoint1.e  
 Quant Time: May 05 02:09:29 2023  
 Quant Method : Z:\pestpcbsrv\HPCHEM1\FID\_C\Method\Aliphatic EPH 050223.M  
 Quant Title : GC Extractables  
 QLast Update : Wed May 03 00:33:18 2023  
 Response via : Initial Calibration  
 Integrator: ChemStation

Volume Inj. : 1 ul  
 Signal Phase : Rxi-1ms  
 Signal Info : 20M x 0.18mm x 0.18um

Compound	R.T.	Response	Conc Units
-----			
System Monitoring Compounds			
9) S ortho-Terphenyl (SURR)	11.528	3460776	21.868 ug/ml
Spiked Amount	50.000	Recovery =	43.74%
12) S 1-chlorooctadecane (S...	12.964	2416350	22.374 ug/ml
Spiked Amount	50.000	Recovery =	44.75%
Target Compounds			
1) T n-Nonane (C9)	3.297	2914145	22.118 ug/ml
2) T n-Decane (C10)	4.363	2948210	22.220 ug/ml
3) T A~Naphthalene (C11.7)	5.948	3074630	22.552 ug/ml
4) T n-Dodecane (C12)	6.382	2951226	22.271 ug/ml
5) T A~2-methylnaphthalene...	7.005	2928734	22.860 ug/ml
6) T n-Tetradecane (C14)	8.176	2890631	22.517 ug/ml
7) T n-Hexadecane (C16)	9.775	2977935	22.427 ug/ml
8) T n-Octadecane (C18)	11.214	3038760	22.317 ug/ml
10) T n-Eicosane (C20)	12.521	2918020	22.197 ug/ml
11) T n-Heneicosane (C21)	13.131	2860232	22.080 ug/ml
13) T n-Docosane (C22)	13.717	2841706	22.024 ug/ml
14) T n-Tetracosane (C24)	14.818	2926641	22.377 ug/ml
15) T n-Hexacosane (C26)	15.836	2846491	22.092 ug/ml
16) T n-Octacosane (C28)	16.783	2787846	21.901 ug/ml
17) T n-Tricontane (C30)	17.668	2834263	21.781 ug/ml
18) T n-Dotriacontane (C32)	18.498	2798484	21.718 ug/ml
19) T n-Tetratriacontane (C34)	19.280	2742368	21.884 ug/ml
20) T n-Hexatriacontane (C36)	20.018	2567112	21.680 ug/ml
21) T n-Octatriacontane (C38)	20.742	2123754	18.174 ug/mlm
22) T n-Tetracontane (C40)	21.632	1845051	16.271 ug/ml

(f)=RT Delta > 1/2 Window

(m)=manual int.

Data Path : Z:\pestpcbsrv\HPCHEM1\FID\_C\Data\FC050423AL\  
 Data File : FC063545.D  
 Signal(s) : FID1A.ch  
 Acq On : 04 May 2023 09:15  
 Operator : YP/AJ  
 Sample : 20 PPM ALIPHATIC HC STD  
 Misc :  
 ALS Vial : 2 Sample Multiplier: 1

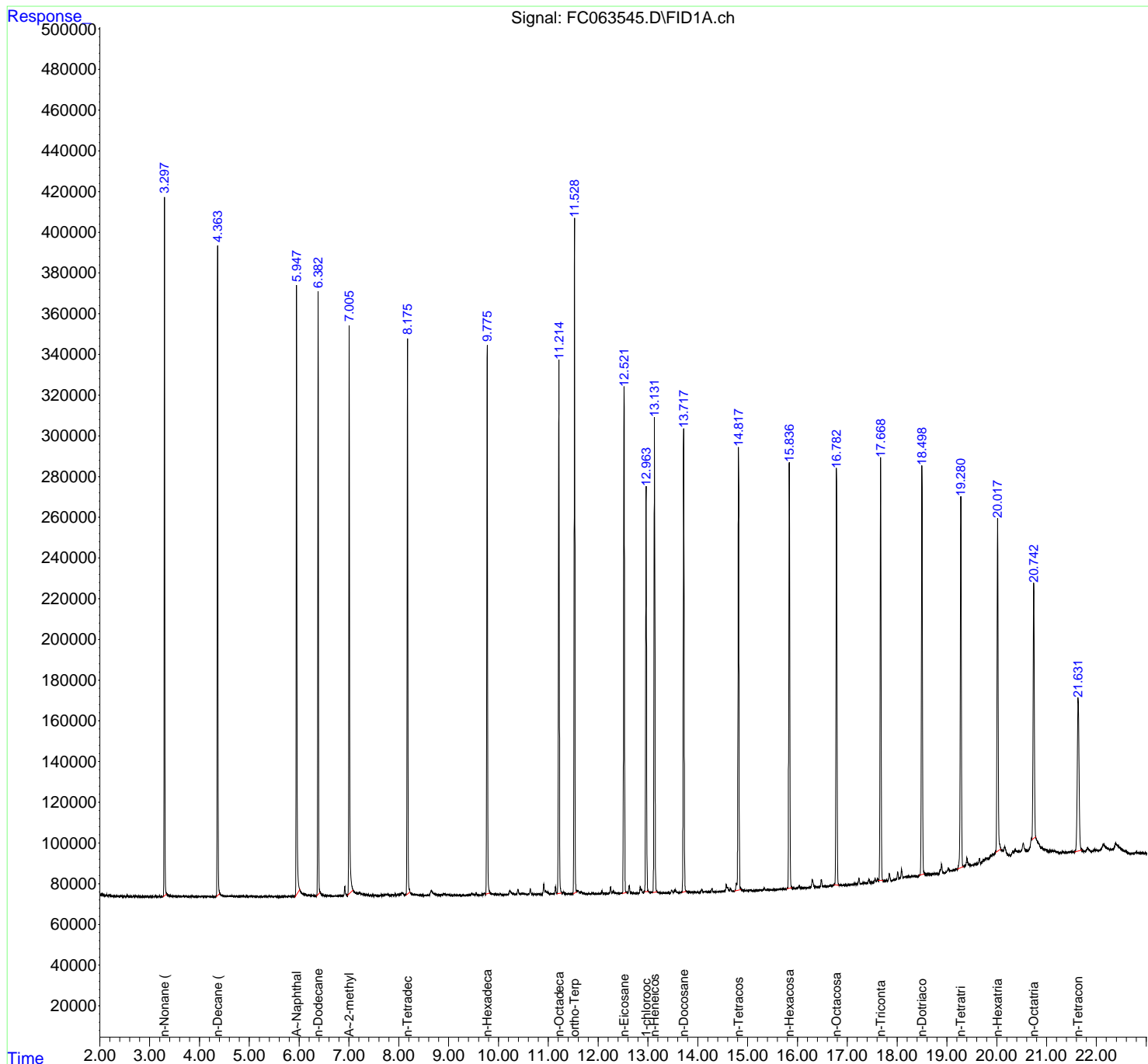
Instrument :  
 FID\_C  
 ClientSampleId :  
 20 PPM ALIPHATIC HC STD

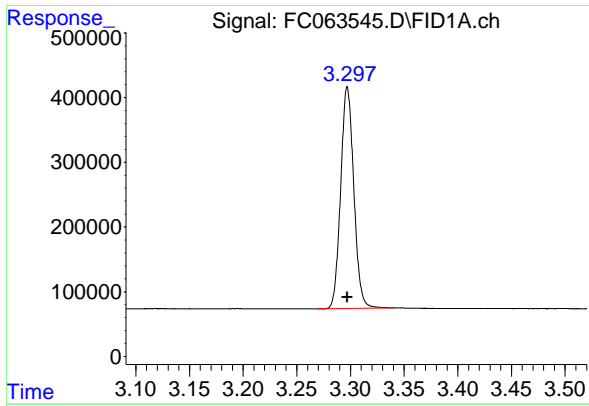
Manual Integrations  
 APPROVED

Reviewed By :Yogesh Patel 05/05/2023  
 Supervised By :Ankita Jodhani 05/05/2023

Integration File: autoint1.e  
 Quant Time: May 05 02:09:29 2023  
 Quant Method : Z:\pestpcbsrv\HPCHEM1\FID\_C\Method\Aliphatic EPH 050223.M  
 Quant Title : GC Extractables  
 QLast Update : Wed May 03 00:33:18 2023  
 Response via : Initial Calibration  
 Integrator: ChemStation

Volume Inj. : 1 ul  
 Signal Phase : Rxi-1ms  
 Signal Info : 20M x 0.18mm x 0.18um





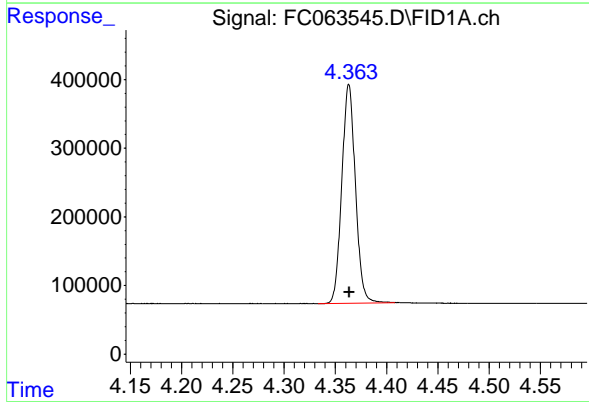
#1 n-Nonane (C9)

R.T.: 3.297 min  
 Delta R.T.: 0.000 min  
 Response: 2914145  
 Conc: 22.12 ug/ml

Instrument : FID\_C  
 Client Sample Id : 20 PPM ALIPHATIC HC STD

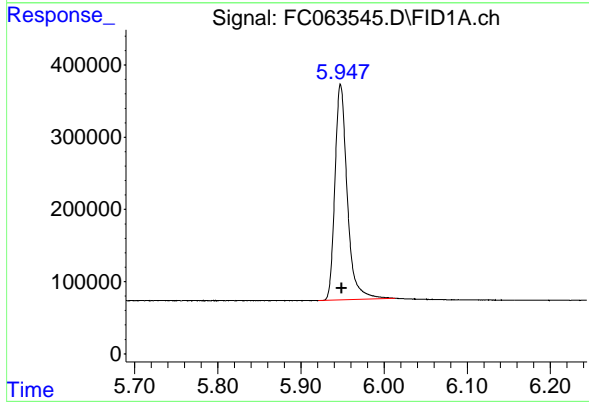
Manual Integrations  
 APPROVED

Reviewed By :Yogesh Patel 05/05/2023  
 Supervised By :Ankita Jodhani 05/05/2023



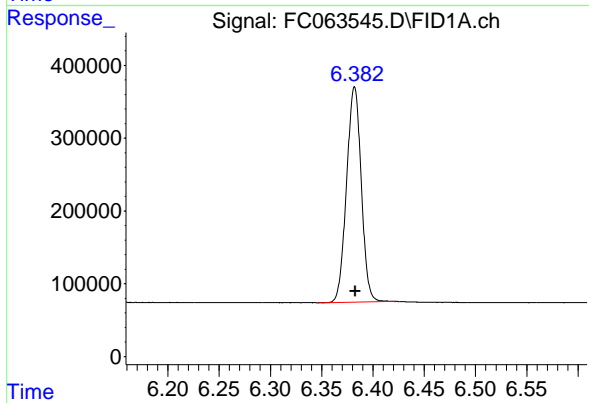
#2 n-Decane (C10)

R.T.: 4.363 min  
 Delta R.T.: 0.000 min  
 Response: 2948210  
 Conc: 22.22 ug/ml



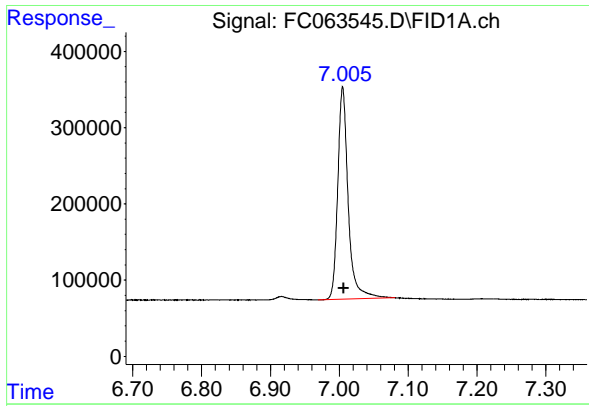
#3 A~Naphthalene (C11.7)

R.T.: 5.948 min  
 Delta R.T.: -0.001 min  
 Response: 3074630  
 Conc: 22.55 ug/ml



#4 n-Dodecane (C12)

R.T.: 6.382 min  
 Delta R.T.: 0.000 min  
 Response: 2951226  
 Conc: 22.27 ug/ml



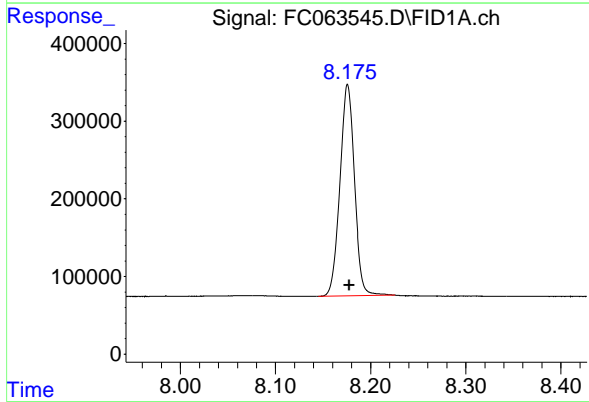
#5 A~2-methylnaphthalene (C12.89)

R.T.: 7.005 min  
 Delta R.T.: -0.001 min  
 Response: 2928734  
 Conc: 22.86 ug/ml

Instrument : FID\_C  
 ClientSampleId : 20 PPM ALIPHATIC HC STD

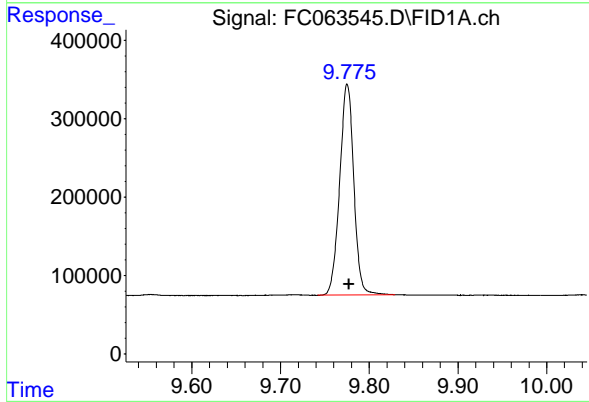
Manual Integrations  
 APPROVED

Reviewed By :Yogesh Patel 05/05/2023  
 Supervised By :Ankita Jodhani 05/05/2023



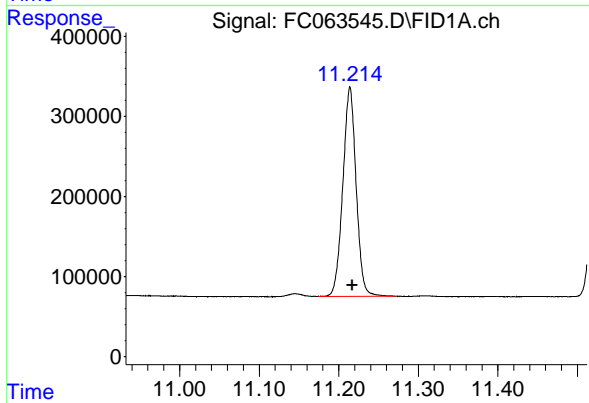
#6 n-Tetradecane (C14)

R.T.: 8.176 min  
 Delta R.T.: -0.002 min  
 Response: 2890631  
 Conc: 22.52 ug/ml



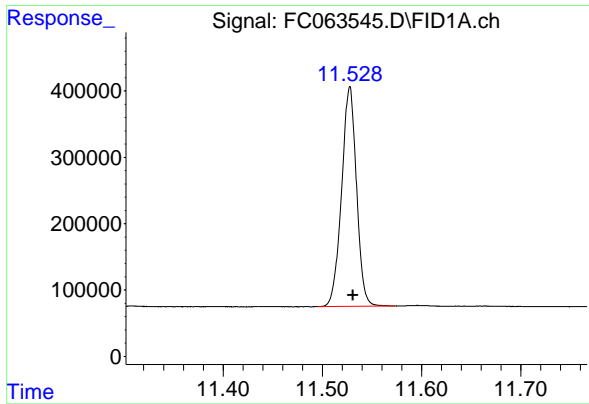
#7 n-Hexadecane (C16)

R.T.: 9.775 min  
 Delta R.T.: -0.002 min  
 Response: 2977935  
 Conc: 22.43 ug/ml



#8 n-Octadecane (C18)

R.T.: 11.214 min  
 Delta R.T.: -0.003 min  
 Response: 3038760  
 Conc: 22.32 ug/ml



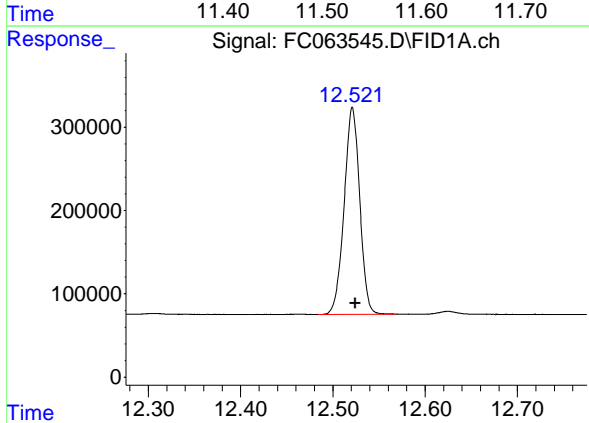
#9 ortho-Terphenyl (SURR)

R.T.: 11.528 min  
 Delta R.T.: -0.003 min  
 Response: 3460776  
 Conc: 21.87 ug/ml

Instrument : FID\_C  
 Client Sample Id : 20 PPM ALIPHATIC HC STD

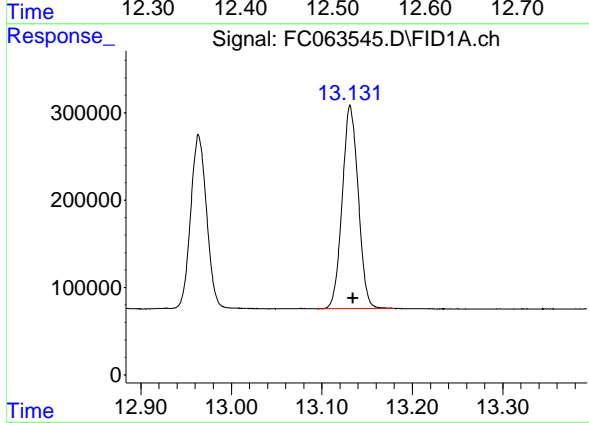
Manual Integrations  
 APPROVED

Reviewed By :Yogesh Patel 05/05/2023  
 Supervised By :Ankita Jodhani 05/05/2023



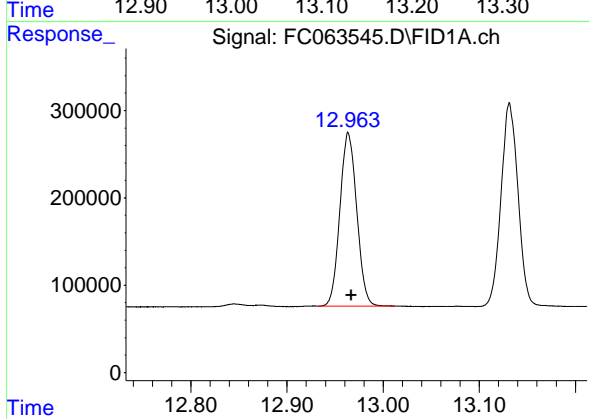
#10 n-Eicosane (C20)

R.T.: 12.521 min  
 Delta R.T.: -0.003 min  
 Response: 2918020  
 Conc: 22.20 ug/ml



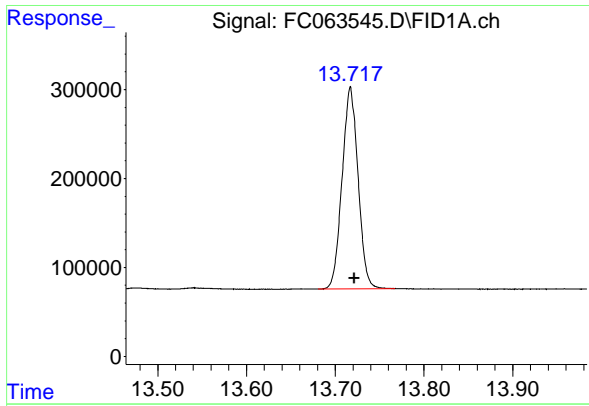
#11 n-Heneicosane (C21)

R.T.: 13.131 min  
 Delta R.T.: -0.003 min  
 Response: 2860232  
 Conc: 22.08 ug/ml



#12 1-chlorooctadecane (SURR)

R.T.: 12.964 min  
 Delta R.T.: -0.003 min  
 Response: 2416350  
 Conc: 22.37 ug/ml



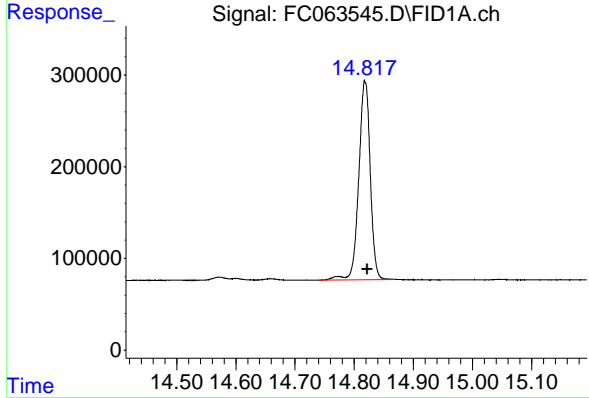
#13 n-Docosane (C22)

R.T.: 13.717 min  
 Delta R.T.: -0.004 min  
 Response: 2841706  
 Conc: 22.02 ug/ml

Instrument : FID\_C  
 ClientSampleId : 20 PPM ALIPHATIC HC STD

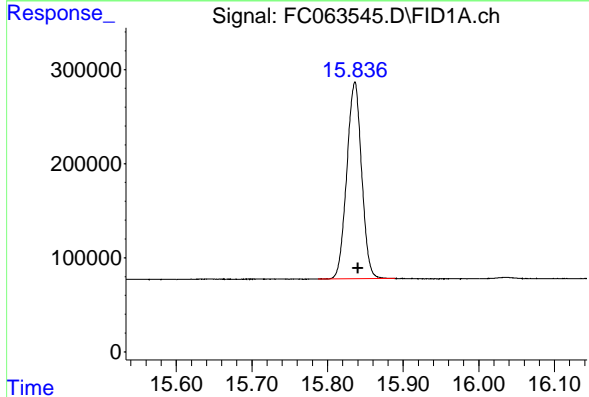
Manual Integrations  
 APPROVED

Reviewed By :Yogesh Patel 05/05/2023  
 Supervised By :Ankita Jodhani 05/05/2023



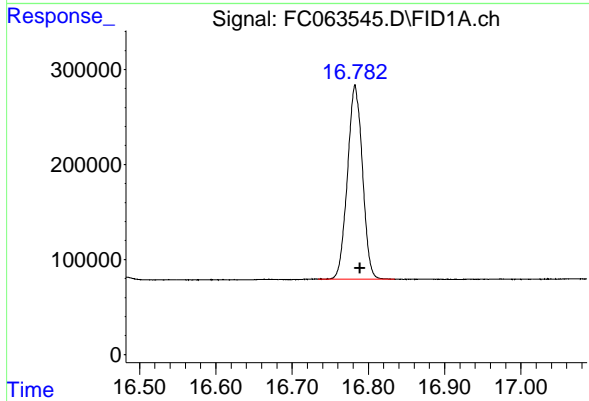
#14 n-Tetracosane (C24)

R.T.: 14.818 min  
 Delta R.T.: -0.004 min  
 Response: 2926641  
 Conc: 22.38 ug/ml



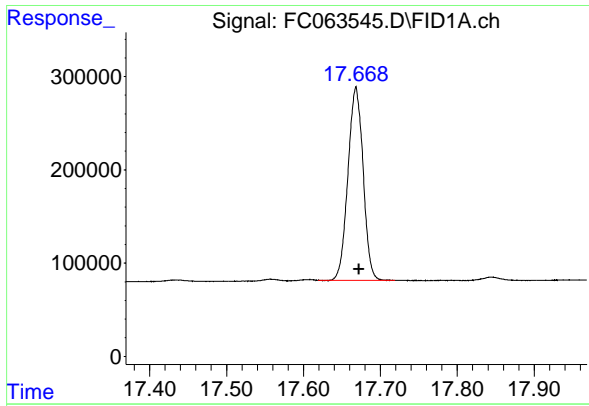
#15 n-Hexacosane (C26)

R.T.: 15.836 min  
 Delta R.T.: -0.004 min  
 Response: 2846491  
 Conc: 22.09 ug/ml



#16 n-Octacosane (C28)

R.T.: 16.783 min  
 Delta R.T.: -0.006 min  
 Response: 2787846  
 Conc: 21.90 ug/ml



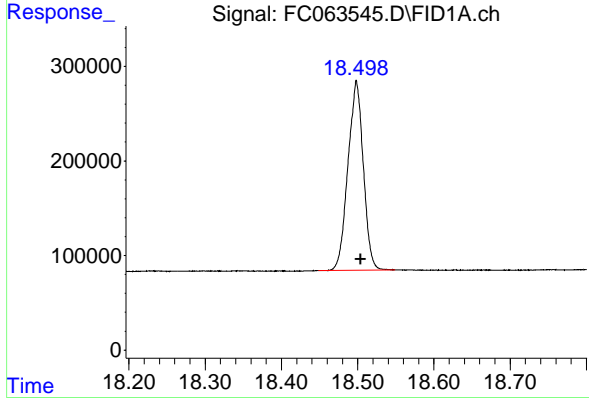
#17 n-Tricontane (C30)

R.T.: 17.668 min  
 Delta R.T.: -0.004 min  
 Response: 2834263  
 Conc: 21.78 ug/ml

Instrument : FID\_C  
 Client Sample Id : 20 PPM ALIPHATIC HC STD

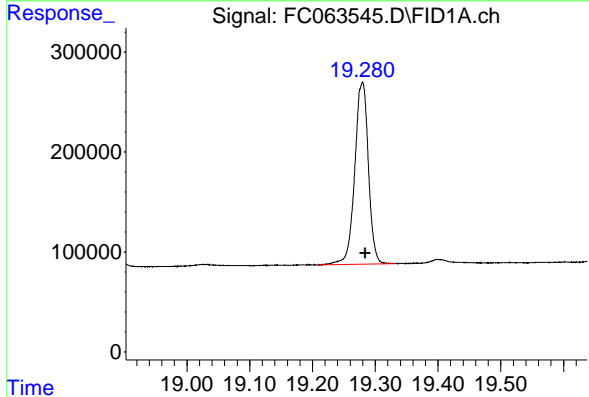
Manual Integrations  
 APPROVED

Reviewed By :Yogesh Patel 05/05/2023  
 Supervised By :Ankita Jodhani 05/05/2023



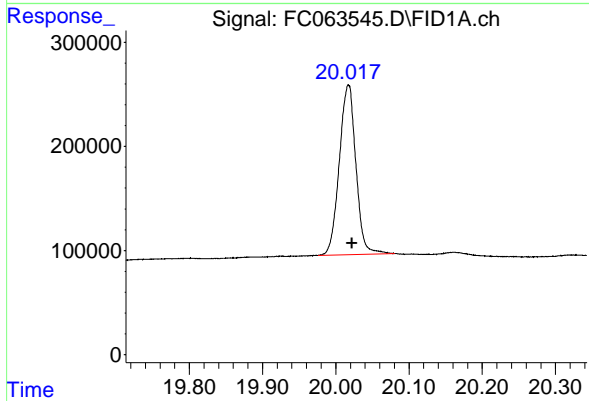
#18 n-Dotriacontane (C32)

R.T.: 18.498 min  
 Delta R.T.: -0.005 min  
 Response: 2798484  
 Conc: 21.72 ug/ml



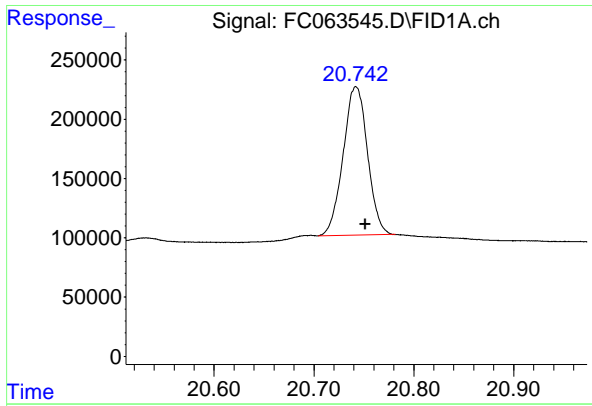
#19 n-Tetraatriacontane (C34)

R.T.: 19.280 min  
 Delta R.T.: -0.005 min  
 Response: 2742368  
 Conc: 21.88 ug/ml



#20 n-Hexatriacontane (C36)

R.T.: 20.018 min  
 Delta R.T.: -0.005 min  
 Response: 2567112  
 Conc: 21.68 ug/ml



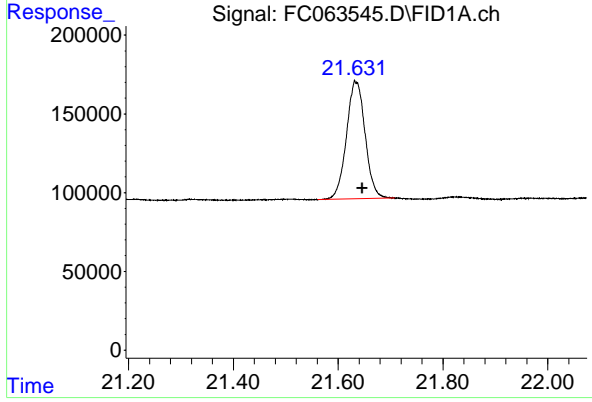
#21 n-Octatriacontane (C38)

R.T.: 20.742 min  
 Delta R.T.: -0.010 min  
 Response: 2123754  
 Conc: 18.17 ug/ml

Instrument : FID\_C  
 ClientSampleId : 20 PPM ALIPHATIC HC STD

Manual Integrations  
 APPROVED

Reviewed By :Yogesh Patel 05/05/2023  
 Supervised By :Ankita Jodhani 05/05/2023



#22 n-Tetracontane (C40)

R.T.: 21.632 min  
 Delta R.T.: -0.014 min  
 Response: 1845051  
 Conc: 16.27 ug/ml