

Data Path : Z:\pestpcbsrv\HPCHEM1\FID_C\Data\FC050721AL\
 Data File : FC053579.D
 Signal(s) : FID1A.CH
 Acq On : 07 May 2021 19:10
 Operator : DD\AJ
 Sample : M2317-03
 Misc :
 ALS Vial : 14 Sample Multiplier: 1

Instrument :
 FID_C
 ClientSampleId :

Integration File: autoint1.e
 Quant Time: May 08 00:09:35 2021
 Quant Method : Z:\pestpcbsrv\HPCHEM1\FID_C\Method\Alaphatic EPH 050321.M
 Quant Title : GC Extractables
 QLast Update : Tue May 04 11:44:19 2021
 Response via : Initial Calibration
 Integrator: ChemStation 6890 Scale Mode: Large solvent peaks clipped

Volume Inj. : 1 ul
 Signal Phase : Rxi-1ms
 Signal Info : 20M x 0.18mm x 0.18um

Compound	R.T.	Response	Conc Units

System Monitoring Compounds			
12) S 1-chlorooctadecane (S...	12.971	2043987	18.326 ug/ml
Spiked Amount 50.000		Recovery =	36.65%
Target Compounds			
4) T n-Dodecane (C12)	6.373	122129	1.009 ug/ml

(f)=RT Delta > 1/2 Window

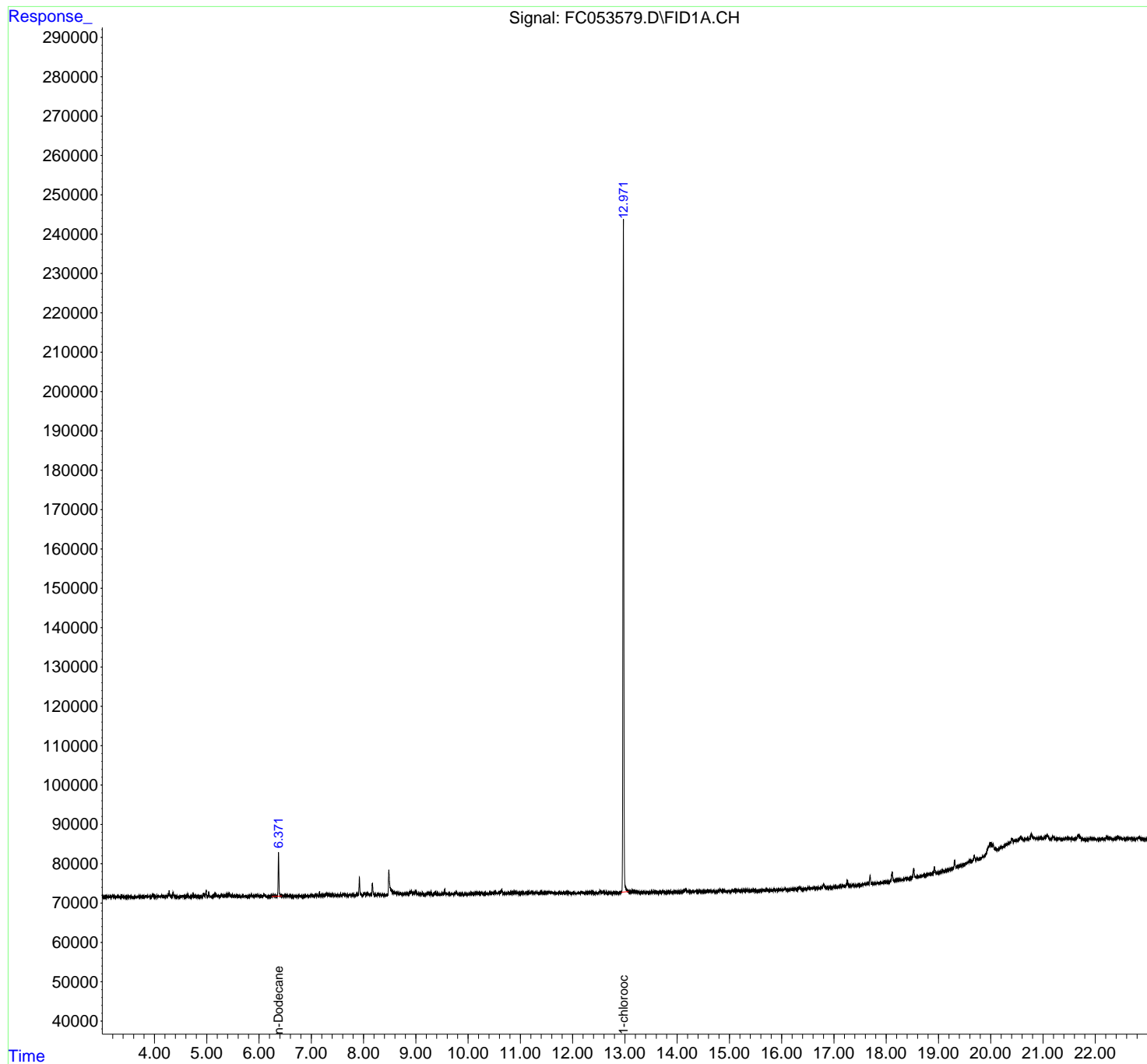
(m)=manual int.

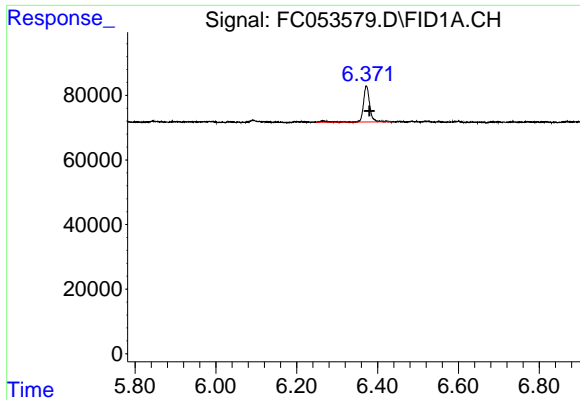
Data Path : Z:\pestpcbsrv\HPCHEM1\FID_C\Data\FC050721AL\
Data File : FC053579.D
Signal(s) : FID1A.CH
Acq On : 07 May 2021 19:10
Operator : DD\AJ
Sample : M2317-03
Misc :
ALS Vial : 14 Sample Multiplier: 1

Instrument :
FID_C
ClientSampleId :

Integration File: autoint1.e
Quant Time: May 08 00:09:35 2021
Quant Method : Z:\pestpcbsrv\HPCHEM1\FID_C\Method\Aliphatic EPH 050321.M
Quant Title : GC Extractables
QLast Update : Tue May 04 11:44:19 2021
Response via : Initial Calibration
Integrator: ChemStation 6890 Scale Mode: Large solvent peaks clipped

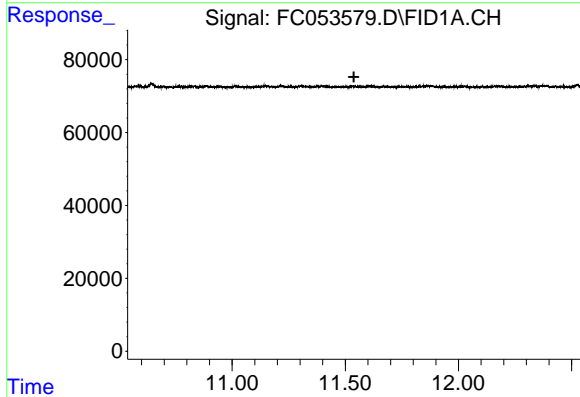
Volume Inj. : 1 ul
Signal Phase : Rxi-1ms
Signal Info : 20M x 0.18mm x 0.18um



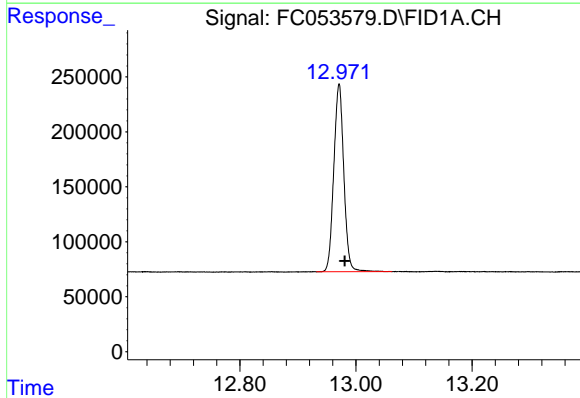


#4 n-Dodecane (C12)
 R.T.: 6.373 min
 Delta R.T.: -0.008 min
 Response: 122129
 Conc: 1.01 ug/ml

Instrument :
 FID_C
 ClientSampleId :



#9 ortho-Terphenyl (SURR)
 R.T.: 0.000 min
 Exp R.T. : 11.538 min
 Response: 0
 Conc: N.D.



#12 1-chlorooctadecane (SURR)
 R.T.: 12.971 min
 Delta R.T.: -0.010 min
 Response: 2043987
 Conc: 18.33 ug/ml