

Data Path : Z:\pestpcbsrv\HPCHEM1\FID\_C\Data\FC050721AL\  
 Data File : FC053597.D  
 Signal(s) : FID1A.CH  
 Acq On : 08 May 2021 6:29  
 Operator : DD\AJ  
 Sample : M2310-04  
 Misc :  
 ALS Vial : 30 Sample Multiplier: 1

Instrument :  
 FID\_C  
 ClientSampleId :

Integration File: autoint1.e  
 Quant Time: May 08 06:52:20 2021  
 Quant Method : Z:\pestpcbsrv\HPCHEM1\FID\_C\Method\Alaphatic EPH 050321.M  
 Quant Title : GC Extractables  
 QLast Update : Tue May 04 11:44:19 2021  
 Response via : Initial Calibration  
 Integrator: ChemStation 6890 Scale Mode: Large solvent peaks clipped

Volume Inj. : 1 ul  
 Signal Phase : Rxi-1ms  
 Signal Info : 20M x 0.18mm x 0.18um

Compound	R.T.	Response	Conc Units
-----			
System Monitoring Compounds			
9) S ortho-Terphenyl (SURR)	11.529	4064622	29.358 ug/ml
Spiked Amount	50.000	Recovery	= 58.72%
12) S 1-chlorooctadecane (S...	12.970	3228776	28.949 ug/ml
Spiked Amount	50.000	Recovery	= 57.90%
Target Compounds			
6) T n-Tetradecane (C14)	8.133	361775	2.970 ug/ml
10) T n-Eicosane (C20)	12.579	502058	3.793 ug/ml
14) T n-Tetracosane (C24)	14.802	245229	1.837 ug/ml
-----			

(f)=RT Delta > 1/2 Window

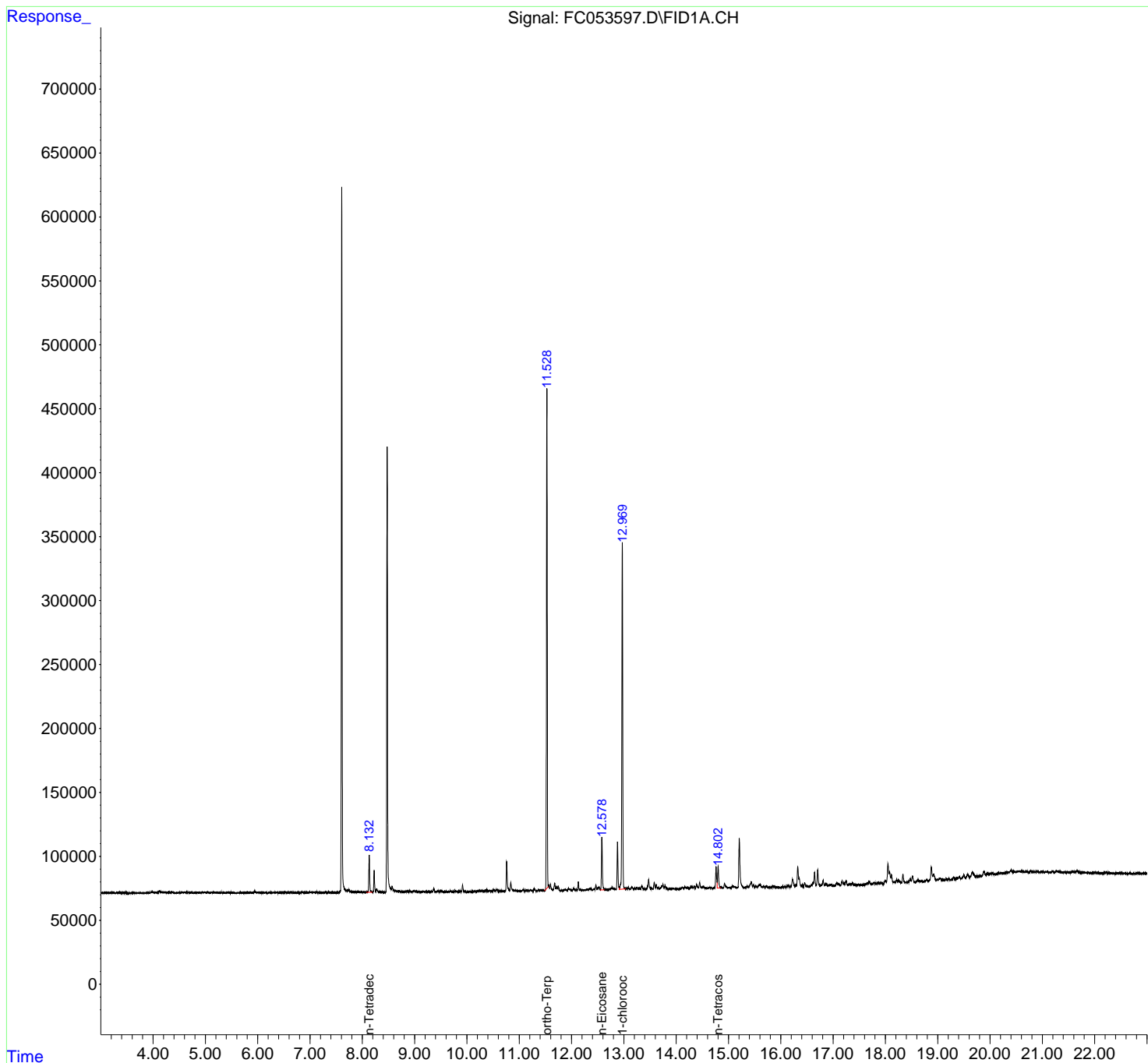
(m)=manual int.

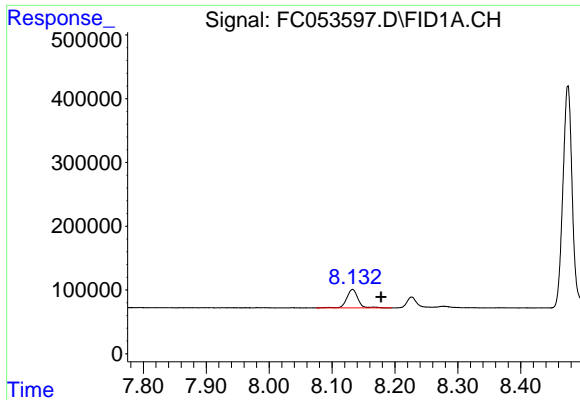
Data Path : Z:\pestpcbsrv\HPCHEM1\FID\_C\Data\FC050721AL\  
 Data File : FC053597.D  
 Signal(s) : FID1A.CH  
 Acq On : 08 May 2021 6:29  
 Operator : DD\AJ  
 Sample : M2310-04  
 Misc :  
 ALS Vial : 30 Sample Multiplier: 1

Instrument :  
 FID\_C  
 ClientSampled :

Integration File: autoint1.e  
 Quant Time: May 08 06:52:20 2021  
 Quant Method : Z:\pestpcbsrv\HPCHEM1\FID\_C\Method\Alaphatic EPH 050321.M  
 Quant Title : GC Extractables  
 QLast Update : Tue May 04 11:44:19 2021  
 Response via : Initial Calibration  
 Integrator: ChemStation 6890 Scale Mode: Large solvent peaks clipped

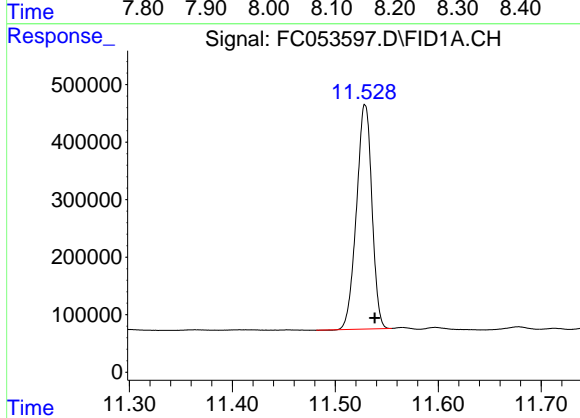
Volume Inj. : 1 ul  
 Signal Phase : Rxi-1ms  
 Signal Info : 20M x 0.18mm x 0.18um



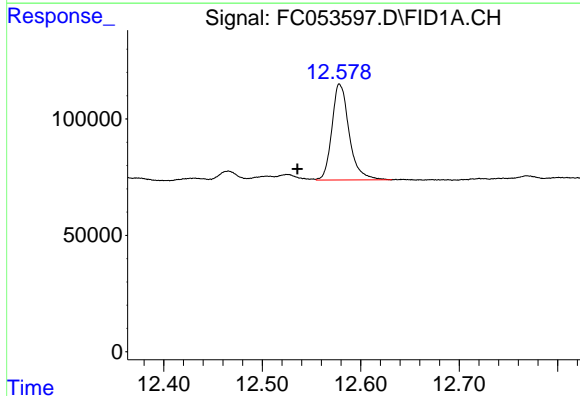


#6 n-Tetradecane (C14)  
 R.T.: 8.133 min  
 Delta R.T.: -0.045 min  
 Response: 361775  
 Conc: 2.97 ug/ml

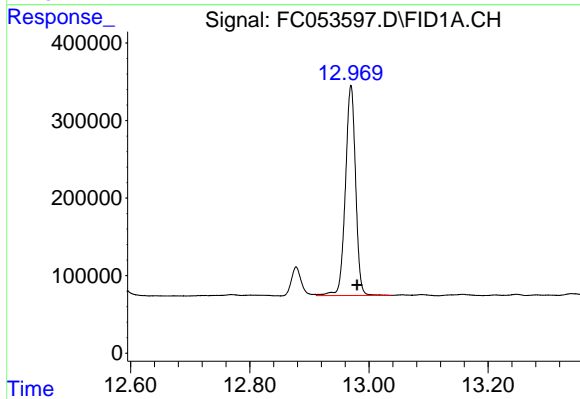
Instrument :  
 FID\_C  
 ClientSampled :



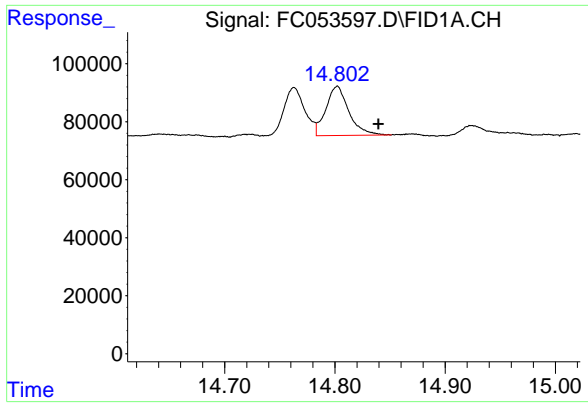
#9 ortho-Terphenyl (SURR)  
 R.T.: 11.529 min  
 Delta R.T.: -0.009 min  
 Response: 4064622  
 Conc: 29.36 ug/ml



#10 n-Eicosane (C20)  
 R.T.: 12.579 min  
 Delta R.T.: 0.043 min  
 Response: 502058  
 Conc: 3.79 ug/ml



#12 1-chlorooctadecane (SURR)  
 R.T.: 12.970 min  
 Delta R.T.: -0.011 min  
 Response: 3228776  
 Conc: 28.95 ug/ml



#14 n-Tetracosane (C24)

R.T.: 14.802 min  
Delta R.T.: -0.038 min  
Response: 245229  
Conc: 1.84 ug/ml

Instrument :  
FID\_C  
ClientSampleId :