

Data Path : Z:\pestpcbsrv\HPCHEM1\FID\_C\Data\FC050721AL\  
 Data File : FC053601.D  
 Signal(s) : FID1A.CH  
 Acq On : 08 May 2021 8:56  
 Operator : DD\AJ  
 Sample : M2330-02DL 2X  
 Misc :  
 ALS Vial : 34 Sample Multiplier: 1

**Instrument :**  
 FID\_C  
**ClientSampleId :**  
 CFOS-SOIL-EPH-2DL

**Manual Integrations**  
**APPROVED**  
 Ankita  
 5/10/2021 2:06:43 PM

Integration File: autoint1.e  
 Quant Time: May 10 01:08:25 2021  
 Quant Method : Z:\pestpcbsrv\HPCHEM1\FID\_C\Method\Alaphatic EPH 050321.M  
 Quant Title : GC Extractables  
 QLast Update : Tue May 04 11:44:19 2021  
 Response via : Initial Calibration  
 Integrator: ChemStation 6890 Scale Mode: Large solvent peaks clipped

Volume Inj. : 1 ul  
 Signal Phase : Rxi-1ms  
 Signal Info : 20M x 0.18mm x 0.18um

Compound	R.T.	Response	Conc Units
-----			
System Monitoring Compounds			
9) S ortho-Terphenyl (SURR)	11.554	3148325	22.740 ug/mlm
Spiked Amount	50.000	Recovery	= 45.48%
12) S 1-chlorooctadecane (S...	12.974	737397	6.611 ug/mlm
Spiked Amount	50.000	Recovery	= 13.22%

Target Compounds

-----

(f)=RT Delta > 1/2 Window

(m)=manual int.

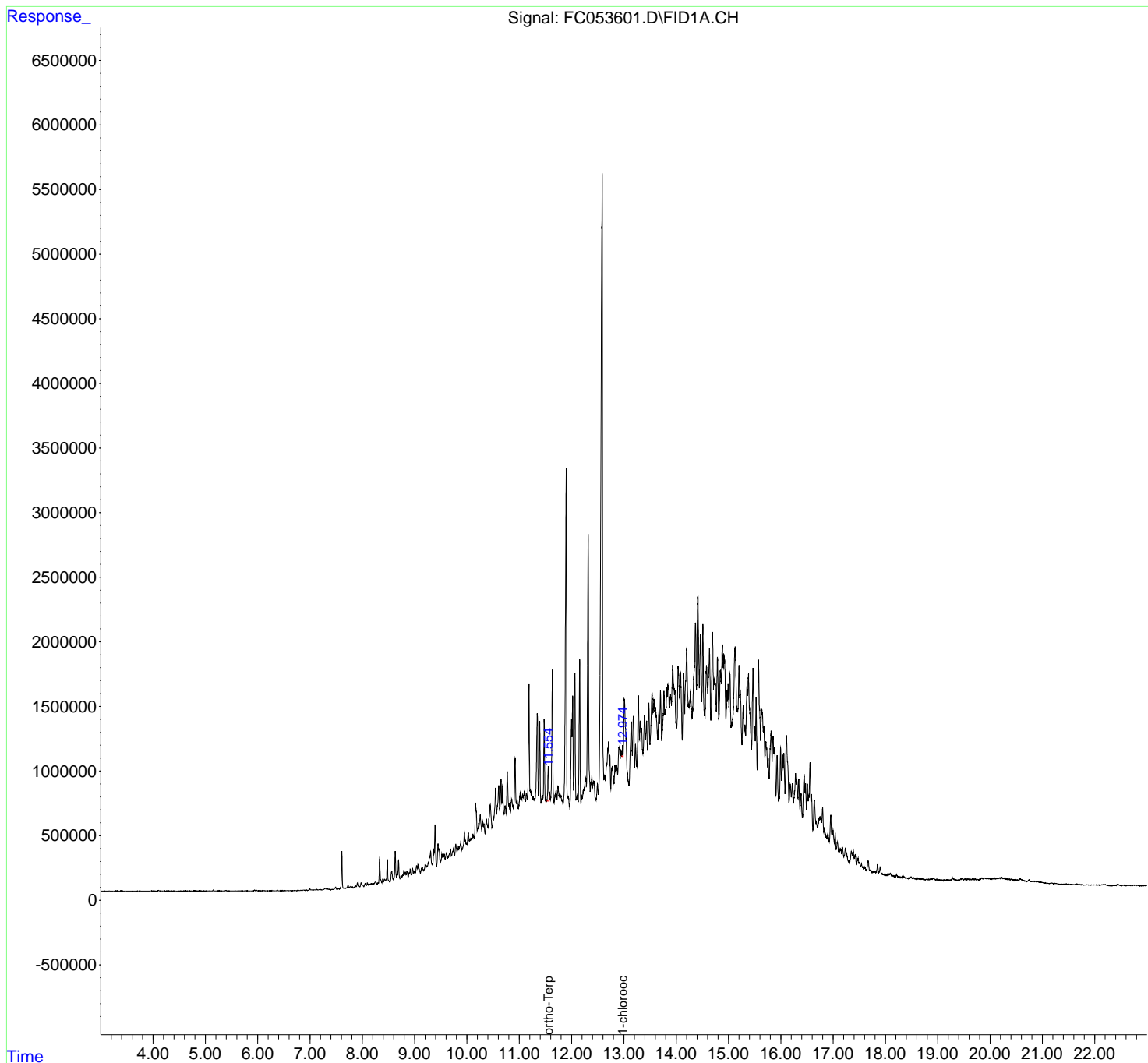
Data Path : Z:\pestpcbsrv\HPCHEM1\FID\_C\Data\FC050721AL\  
 Data File : FC053601.D  
 Signal(s) : FID1A.CH  
 Acq On : 08 May 2021 8:56  
 Operator : DD\AJ  
 Sample : M2330-02DL 2X  
 Misc :  
 ALS Vial : 34 Sample Multiplier: 1

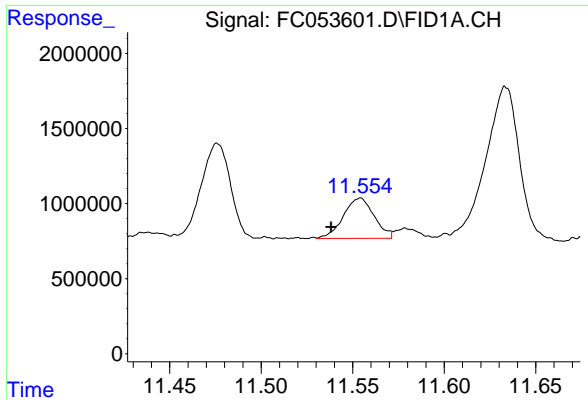
**Instrument :**  
 FID\_C  
**ClientSampled :**  
 CFOS-SOIL-EPH-2DL

**Manual Integrations**  
**APPROVED**  
 Ankita  
 5/10/2021 2:06:43 PM

Integration File: autoint1.e  
 Quant Time: May 10 01:08:25 2021  
 Quant Method : Z:\pestpcbsrv\HPCHEM1\FID\_C\Method\Alaphatic EPH 050321.M  
 Quant Title : GC Extractables  
 QLast Update : Tue May 04 11:44:19 2021  
 Response via : Initial Calibration  
 Integrator: ChemStation 6890 Scale Mode: Large solvent peaks clipped

Volume Inj. : 1 ul  
 Signal Phase : Rxi-1ms  
 Signal Info : 20M x 0.18mm x 0.18um



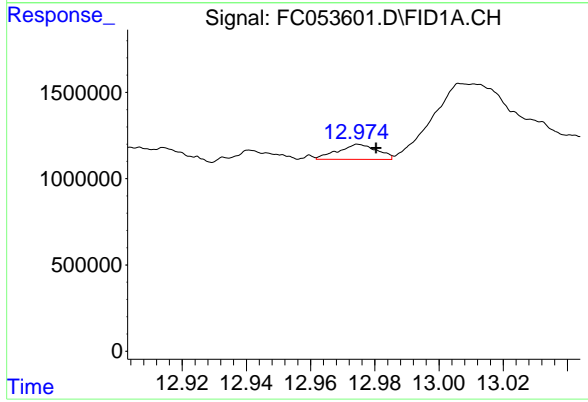


#9 ortho-Terphenyl (SURR)

R.T.: 11.554 min  
Delta R.T.: 0.016 min  
Response: 3148325  
Conc: 22.74 ug/ml m

Instrument :  
FID\_C  
ClientSampled :  
CFOS-SOIL-EPH-2DL

Manual Integrations  
APPROVED  
Ankita  
5/10/2021 2:06:43 PM



#12 1-chlorooctadecane (SURR)

R.T.: 12.974 min  
Delta R.T.: -0.006 min  
Response: 737397  
Conc: 6.61 ug/ml m