

Data Path : Z:\pestpcbsrv\HPCHEM1\FID_C\Data\FC050724AL\
 Data File : FC066349.D
 Signal(s) : FID1A.ch
 Acq On : 08 May 2024 13:03
 Operator : YP/AJ
 Sample : P2391-05DL2 1000X
 Misc :
 ALS Vial : 12 Sample Multiplier: 1

Instrument :
 FID_C
ClientSampleId :
 PE-2DL2

Integration File: autoint1.e
 Quant Time: May 08 13:41:20 2024
 Quant Method : Z:\pestpcbsrv\HPCHEM1\FID_C\Method\Aliphatic EPH 050124.M
 Quant Title : GC Extractables
 QLast Update : Thu May 02 09:03:15 2024
 Response via : Initial Calibration
 Integrator: ChemStation

Volume Inj. : 1 ul
 Signal Phase : Rxi-1ms
 Signal Info : 20M x 0.18mm x 0.18um

Compound	R.T.	Response	Conc Units

System Monitoring Compounds			
Target Compounds			

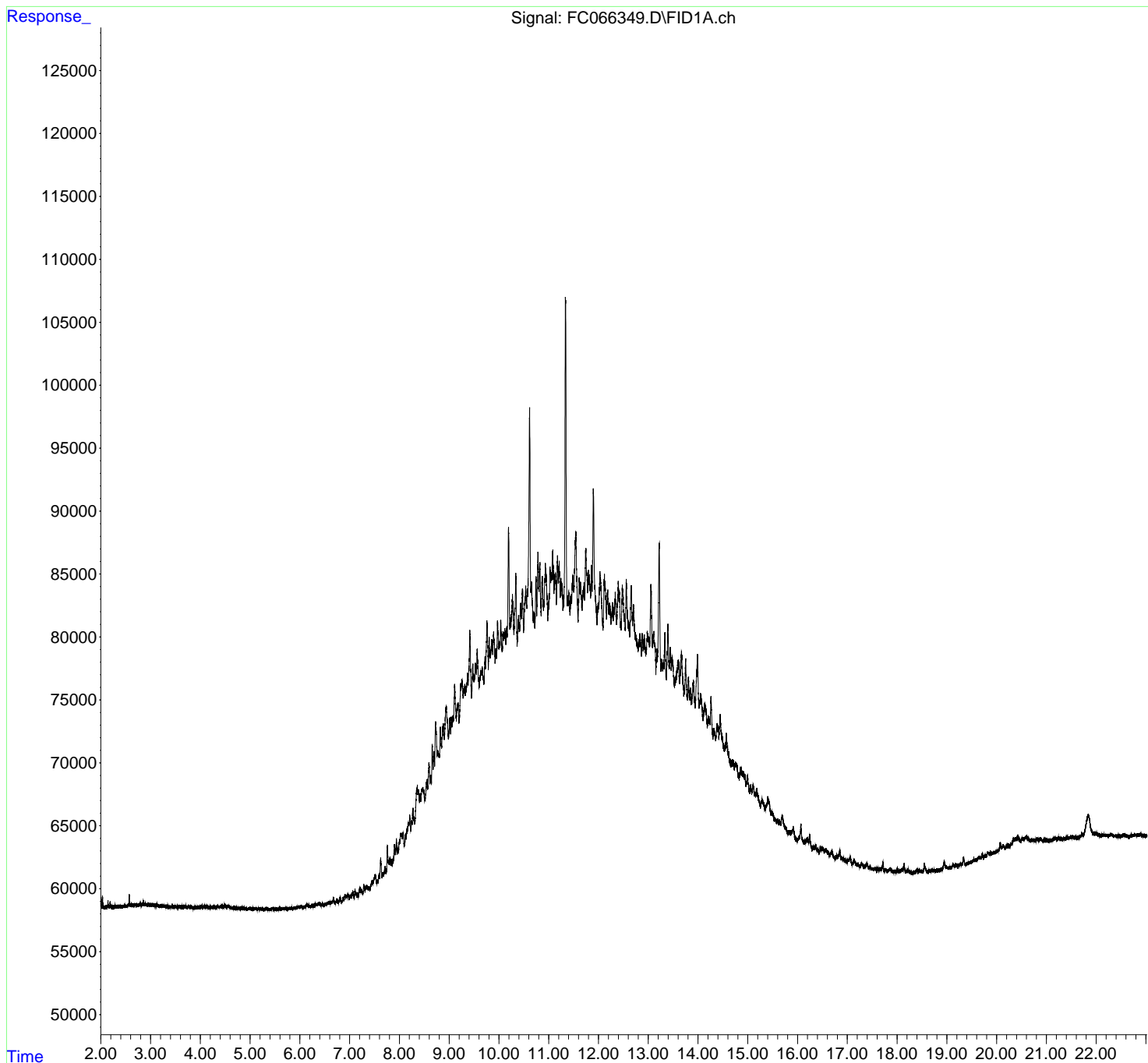
(f)=RT Delta > 1/2 Window (m)=manual int.

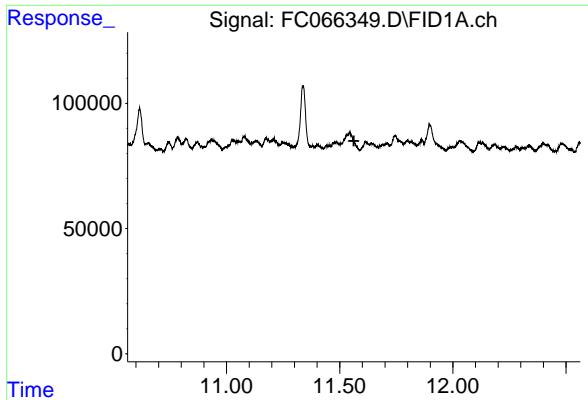
Data Path : Z:\pestpcbsrv\HPCHEM1\FID_C\Data\FC050724AL\
 Data File : FC066349.D
 Signal(s) : FID1A.ch
 Acq On : 08 May 2024 13:03
 Operator : YP/AJ
 Sample : P2391-05DL2 1000X
 Misc :
 ALS Vial : 12 Sample Multiplier: 1

Instrument :
 FID_C
 ClientSampleId :
 PE-2DL2

Integration File: autoint1.e
 Quant Time: May 08 13:41:20 2024
 Quant Method : Z:\pestpcbsrv\HPCHEM1\FID_C\Method\Aliphatic EPH 050124.M
 Quant Title : GC Extractables
 QLast Update : Thu May 02 09:03:15 2024
 Response via : Initial Calibration
 Integrator: ChemStation

Volume Inj. : 1 uL
 Signal Phase : Rxi-1ms
 Signal Info : 20M x 0.18mm x 0.18um

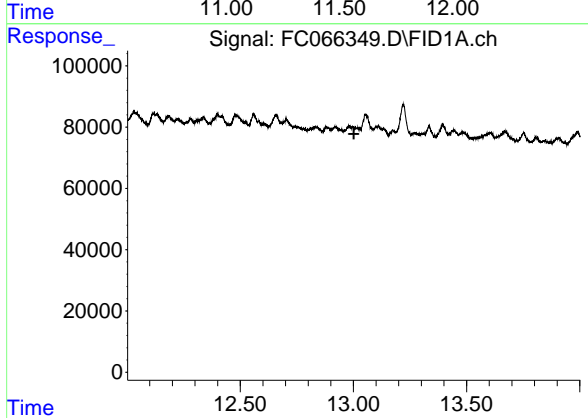




#9 ortho-Terphenyl (SURR)

R.T.: 0.000 min
Exp R.T. : 11.563 min
Response: 0
Conc: N.D.

Instrument :
FID_C
ClientSampleId :
PE-2DL2



#12 1-chlorooctadecane (SURR)

R.T.: 0.000 min
Exp R.T. : 13.002 min
Response: 0
Conc: N.D.