

Data Path : Z:\pestpcbsrv\HPCHEM1\FID_C\Data\FC051021AL\
 Data File : FC053630.D
 Signal(s) : FID1A.CH
 Acq On : 10 May 2021 17:38
 Operator : DD\AJ
 Sample : M2335-01
 Misc :
 ALS Vial : 14 Sample Multiplier: 1

Instrument :
 FID_C
 ClientSampleId :
 OK-02-050721

Integration File: autoint1.e
 Quant Time: May 11 03:20:40 2021
 Quant Method : Z:\pestpcbsrv\HPCHEM1\FID_C\Method\Alaphatic EPH 050321.M
 Quant Title : GC Extractables
 QLast Update : Tue May 04 11:44:19 2021
 Response via : Initial Calibration
 Integrator: ChemStation 6890 Scale Mode: Large solvent peaks clipped

Volume Inj. : 1 ul
 Signal Phase : Rxi-1ms
 Signal Info : 20M x 0.18mm x 0.18um

Compound	R.T.	Response	Conc Units

System Monitoring Compounds			
9) S ortho-Terphenyl (SURR)	11.530	4851573	35.042 ug/ml
Spiked Amount	50.000	Recovery	= 70.08%
12) S 1-chlorooctadecane (S...	12.972	4178011	37.460 ug/ml
Spiked Amount	50.000	Recovery	= 74.92%

Target Compounds

(f)=RT Delta > 1/2 Window

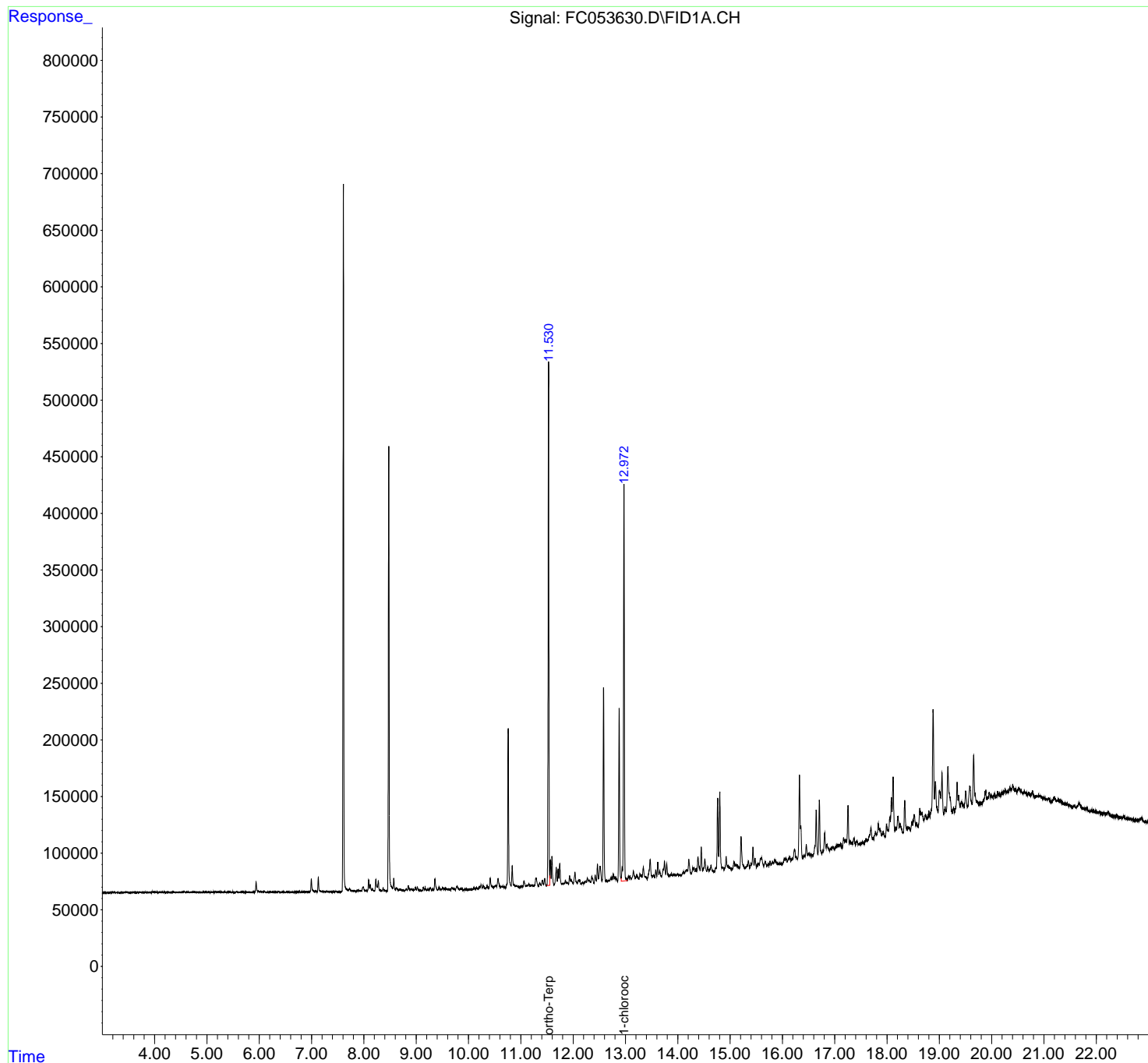
(m)=manual int.

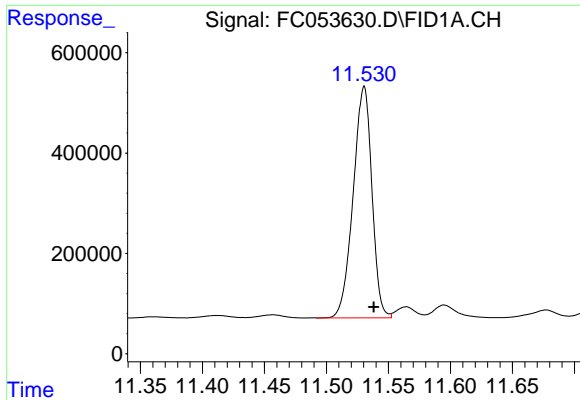
Data Path : Z:\pestpcbsrv\HPCHEM1\FID_C\Data\FC051021AL\
Data File : FC053630.D
Signal(s) : FID1A.CH
Acq On : 10 May 2021 17:38
Operator : DD\AJ
Sample : M2335-01
Misc :
ALS Vial : 14 Sample Multiplier: 1

Instrument :
FID_C
ClientSampleId :
OK-02-050721

Integration File: autoint1.e
Quant Time: May 11 03:20:40 2021
Quant Method : Z:\pestpcbsrv\HPCHEM1\FID_C\Method\Alaphatic EPH 050321.M
Quant Title : GC Extractables
QLast Update : Tue May 04 11:44:19 2021
Response via : Initial Calibration
Integrator: ChemStation 6890 Scale Mode: Large solvent peaks clipped

Volume Inj. : 1 ul
Signal Phase : Rxi-1ms
Signal Info : 20M x 0.18mm x 0.18um

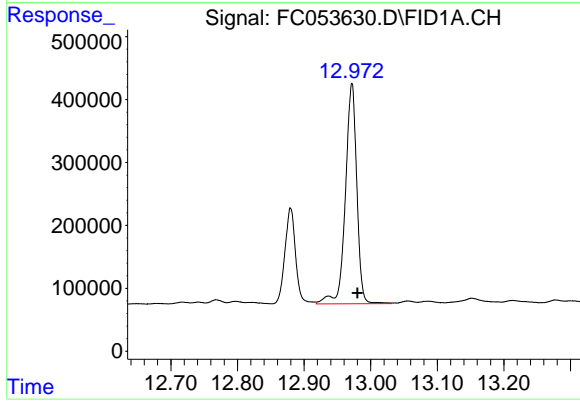




#9 ortho-Terphenyl (SURR)

R.T.: 11.530 min
Delta R.T.: -0.008 min
Response: 4851573
Conc: 35.04 ug/ml

Instrument :
FID_C
ClientSampleId :
OK-02-050721



#12 1-chlorooctadecane (SURR)

R.T.: 12.972 min
Delta R.T.: -0.009 min
Response: 4178011
Conc: 37.46 ug/ml