

Data Path : P:\HPCHEM1\FID C\Data\FC051118AL\
 Data File : FC033921.D
 Signal(s) : FID1A.CH
 Acq On : 11 May 2018 23:48
 Operator : UA/AJ
 Sample : 20 PPM ALIPHATIC HC STD
 Misc :
 ALS Vial : 2 Sample Multiplier: 1

Instrument :
 FID_C
 ClientSampleId :

Integration File: autoint1.e
 Quant Time: May 12 00:56:21 2018
 Quant Method : P:\HPCHEM1\FID_C\Method\Aliphatic EPH 042418.M
 Quant Title : GC Extractables
 QLast Update : Tue Apr 24 20:41:39 2018
 Response via : Initial Calibration
 Integrator: ChemStation 6890 Scale Mode: Large solvent peaks clipped

Volume Inj. : 1 ul
 Signal Phase : Rxi-lms
 Signal Info : 20M x 0.18mm x 0.18um

Compound	R.T.	Response	Conc Units
System Monitoring Compounds			
9) S ortho-Terphenyl (SURR)	11.449	2571188	16.557 ug/ml
Spiked Amount	50.000	Recovery =	33.11%
12) S 1-chlorooctadecane (S...)	12.884	1980706	16.865 ug/ml
Spiked Amount	50.000	Recovery =	33.73%
Target Compounds			
1) T n-Nonane (C9)	3.257	2371092	17.369 ug/ml
2) T n-Decane (C10)	4.322	2447990	17.617 ug/ml
3) T A-Naphthalene (C11.7)	5.895	2755281	17.758 ug/ml
4) T n-Dodecane (C12)	6.333	2493802	17.360 ug/ml
5) T A-2-methylnaphthalene...	6.946	2760089	17.607 ug/ml
6) T n-Tetradecane (C14)	8.116	2527994	16.906 ug/ml
7) T n-Hexadecane (C16)	9.707	2498209	16.576 ug/ml
8) T n-Octadecane (C18)	11.140	2421362	16.384 ug/ml
10) T n-Eicosane (C20)	12.443	2393726	16.293 ug/ml
11) T n-Heneicosane (C21)	13.052	2355857	16.339 ug/ml
13) T n-Docosane (C22)	13.635	2360037	16.558 ug/ml
14) T n-Tetracosane (C24)	14.732	2323926	16.935 ug/ml
15) T n-Hexacosane (C26)	15.749	2281230	17.442 ug/ml
16) T n-Octacosane (C28)	16.694	2307331	18.074 ug/ml
17) T n-Tricontane (C30)	17.578	2264334	18.794 ug/ml
18) T n-Dotriacontane (C32)	18.408	2236732	19.216 ug/ml
19) T n-Tetratriacontane (C34)	19.188	2117392	19.592 ug/ml
20) T n-Hexatriacontane (C36)	19.927	1983170	19.810 ug/ml
21) T n-Octatriacontane (C38)	20.640	2269199	23.705 ug/ml
22) T n-Tetracontane (C40)	21.498	1827617	20.364 ug/ml

(f)=RT Delta > 1/2 Window

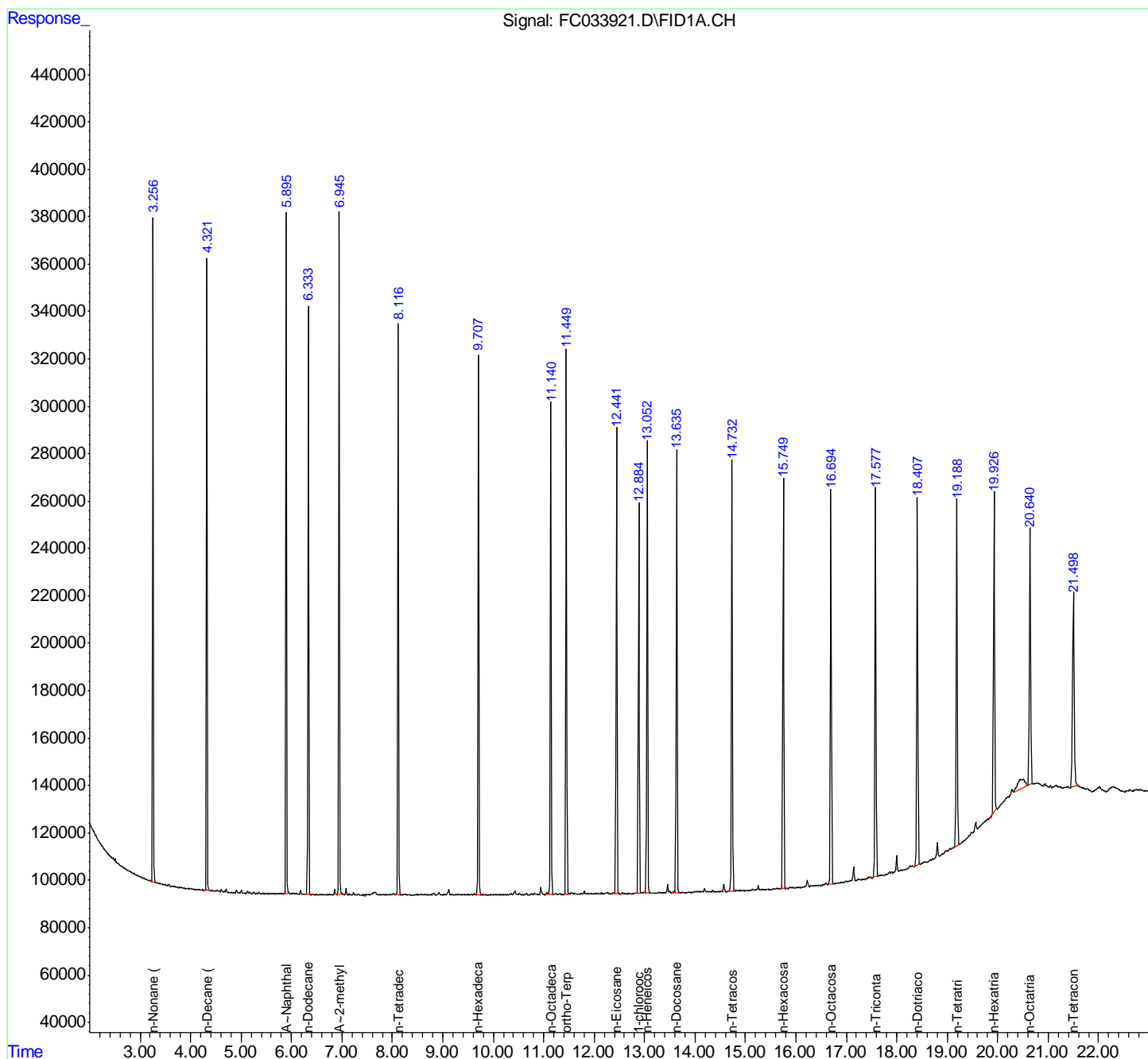
(m)=manual int.

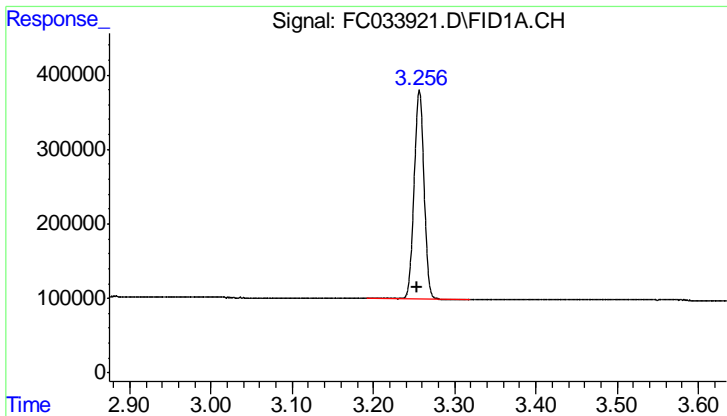
Data Path : P:\HPCHEM1\FID C\Data\FC051118AL\
 Data File : FC033921.D
 Signal(s) : FID1A.CH
 Acq On : 11 May 2018 23:48
 Operator : UA/AJ
 Sample : 20 PPM ALIPHATIC HC STD
 Misc :
 ALS Vial : 2 Sample Multiplier: 1

Instrument :
 FID_C
 ClientSampled :

Integration File: autoint1.e
 Quant Time: May 12 00:56:21 2018
 Quant Method : P:\HPCHEM1\FID_C\Method\Aliphatic EPH 042418.M
 Quant Title : GC Extractables
 QLast Update : Tue Apr 24 20:41:39 2018
 Response via : Initial Calibration
 Integrator: ChemStation 6890 Scale Mode: Large solvent peaks clipped

Volume Inj. : 1 ul
 Signal Phase : Rxi-lms
 Signal Info : 20M x 0.18mm x 0.18um

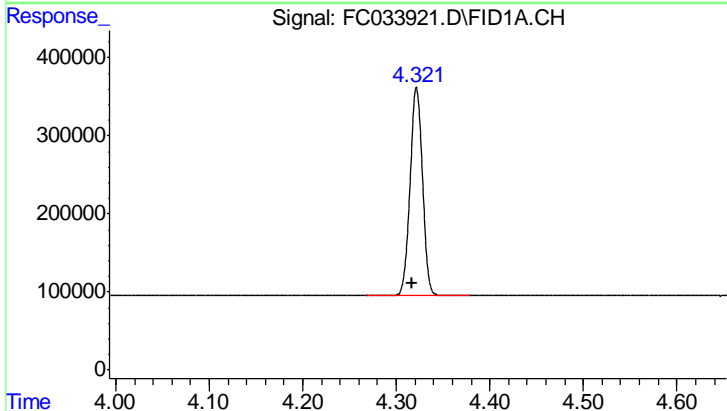




#1 n-Nonane (C9)

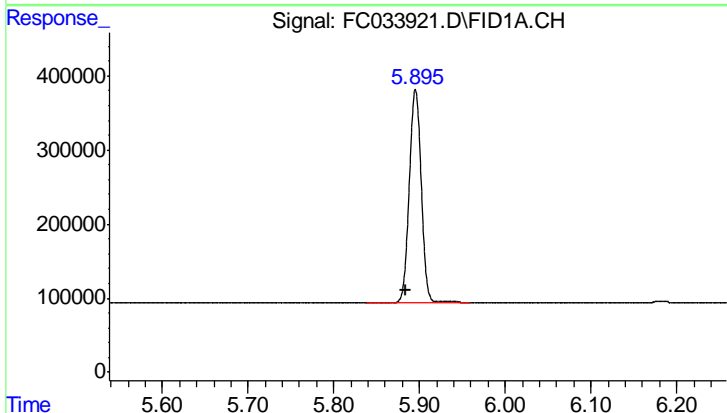
R.T.: 3.257 min
Delta R.T.: 0.003 min
Response: 2371092
Conc: 17.37 ug/ml

Instrument :
FID_C
ClientSampleId :



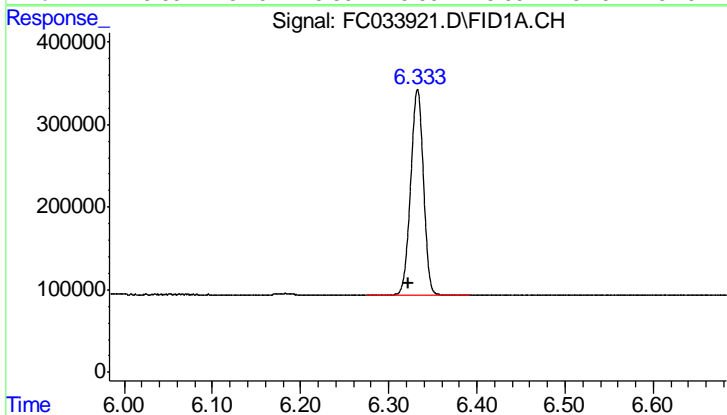
#2 n-Decane (C10)

R.T.: 4.322 min
Delta R.T.: 0.005 min
Response: 2447990
Conc: 17.62 ug/ml



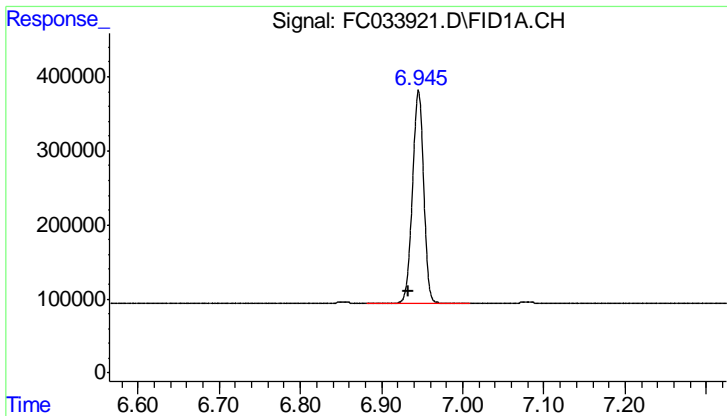
#3 A~Naphthalene (C11.7)

R.T.: 5.895 min
Delta R.T.: 0.011 min
Response: 2755281
Conc: 17.76 ug/ml



#4 n-Dodecane (C12)

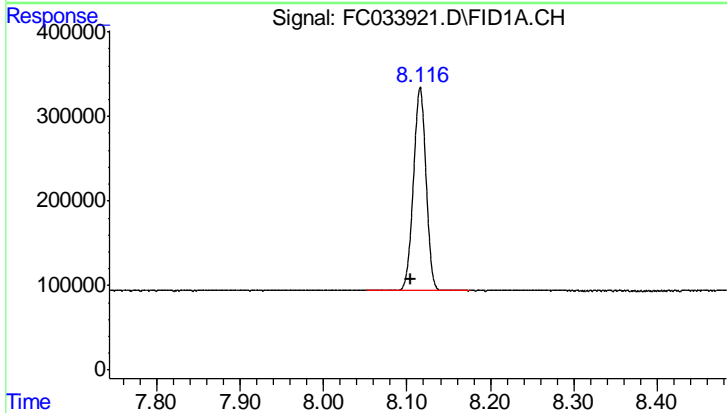
R.T.: 6.333 min
Delta R.T.: 0.010 min
Response: 2493802
Conc: 17.36 ug/ml



#5 A~2-methylnaphthalene (C12.89)

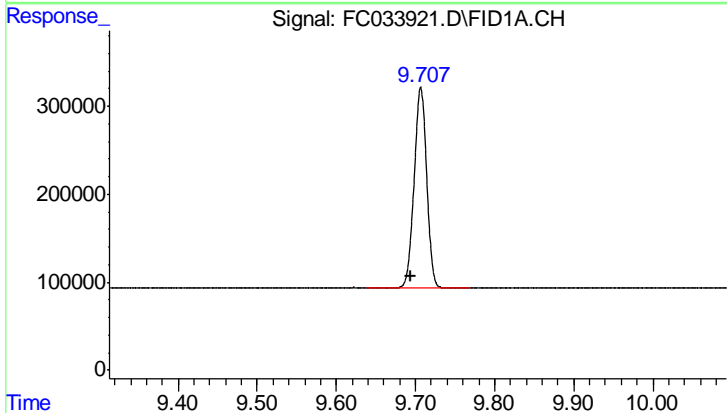
R.T.: 6.946 min
 Delta R.T.: 0.013 min
 Response: 2760089
 Conc: 17.61 ug/ml

Instrument :
 FID_C
 ClientSampleId :



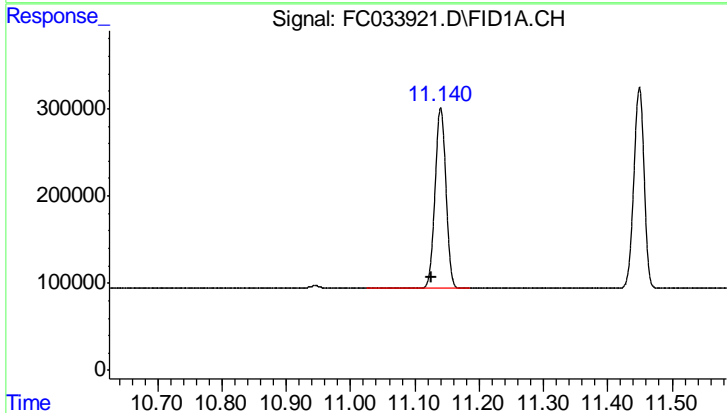
#6 n-Tetradecane (C14)

R.T.: 8.116 min
 Delta R.T.: 0.011 min
 Response: 2527994
 Conc: 16.91 ug/ml



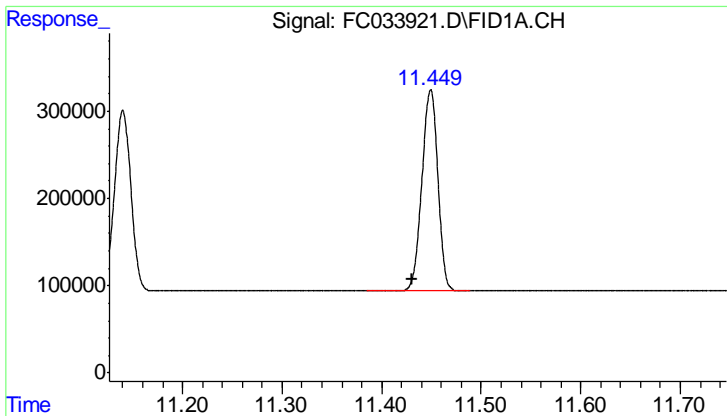
#7 n-Hexadecane (C16)

R.T.: 9.707 min
 Delta R.T.: 0.013 min
 Response: 2498209
 Conc: 16.58 ug/ml



#8 n-Octadecane (C18)

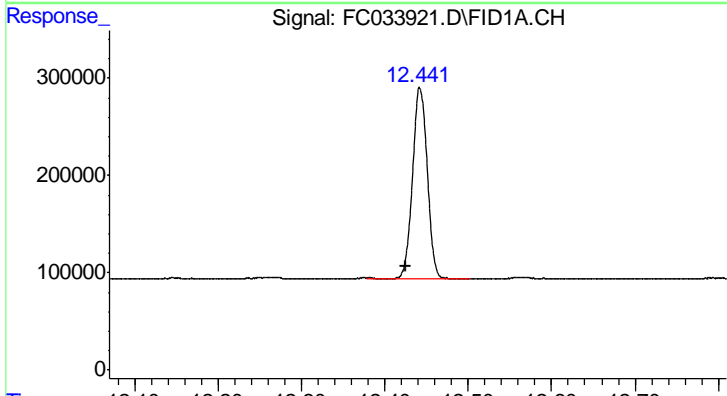
R.T.: 11.140 min
 Delta R.T.: 0.015 min
 Response: 2421362
 Conc: 16.38 ug/ml



#9 ortho-Terphenyl (SURR)

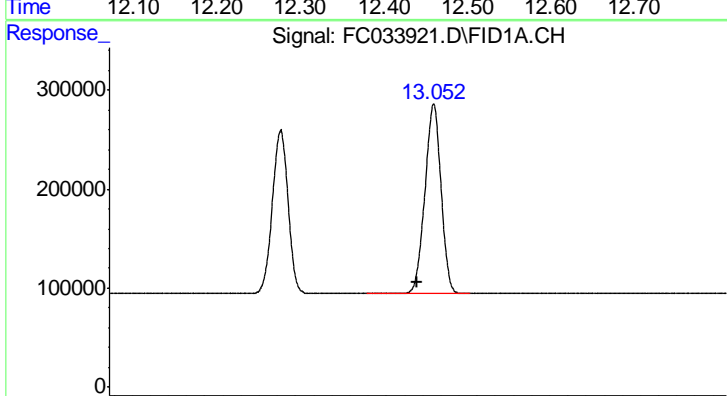
R.T.: 11.449 min
 Delta R.T.: 0.018 min
 Response: 2571188
 Conc: 16.56 ug/ml

Instrument :
 FID_C
 ClientSampleId :



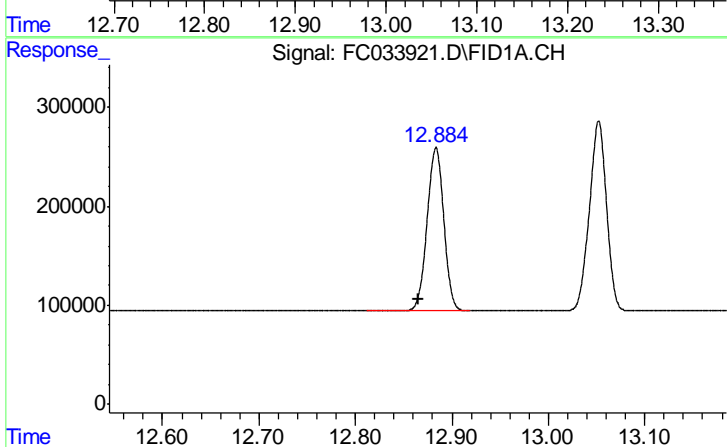
#10 n-Eicosane (C20)

R.T.: 12.443 min
 Delta R.T.: 0.017 min
 Response: 2393726
 Conc: 16.29 ug/ml



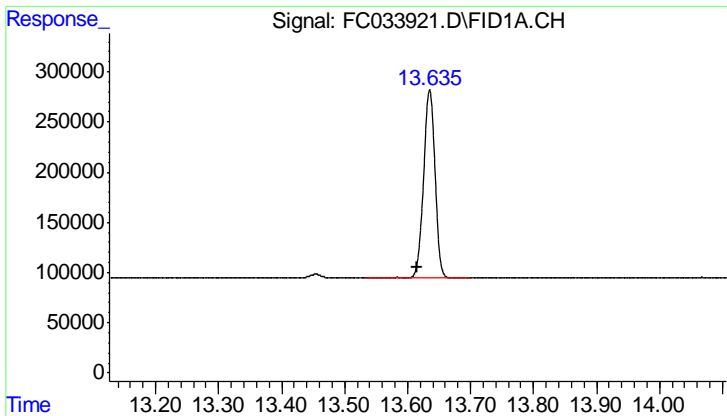
#11 n-Heneicosane (C21)

R.T.: 13.052 min
 Delta R.T.: 0.018 min
 Response: 2355857
 Conc: 16.34 ug/ml



#12 1-chlorooctadecane (SURR)

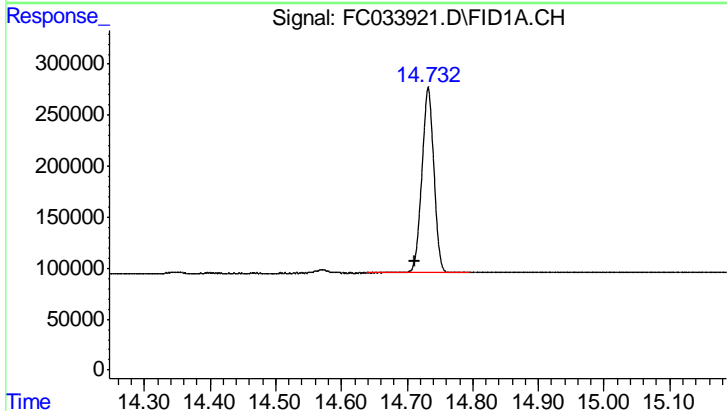
R.T.: 12.884 min
 Delta R.T.: 0.019 min
 Response: 1980706
 Conc: 16.87 ug/ml



#13 n-Docosane (C22)

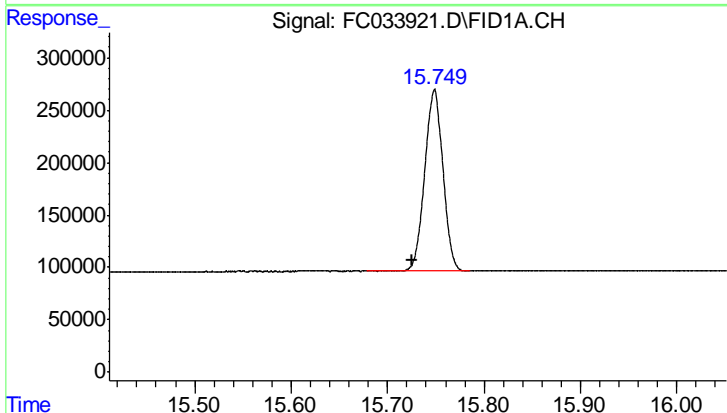
R.T.: 13.635 min
Delta R.T.: 0.019 min
Response: 2360037
Conc: 16.56 ug/ml

Instrument :
FID_C
ClientSampleId :



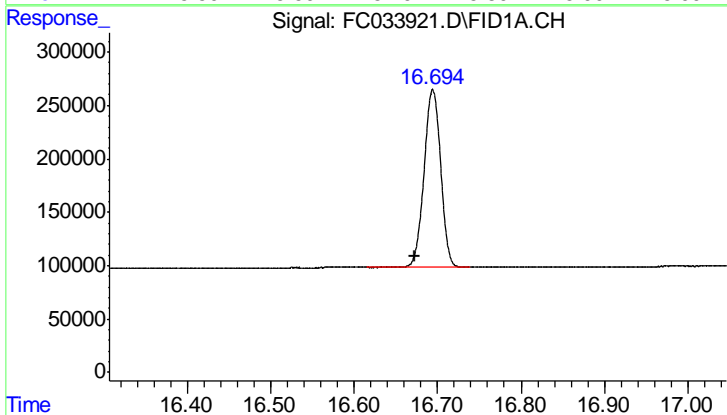
#14 n-Tetracosane (C24)

R.T.: 14.732 min
Delta R.T.: 0.020 min
Response: 2323926
Conc: 16.94 ug/ml



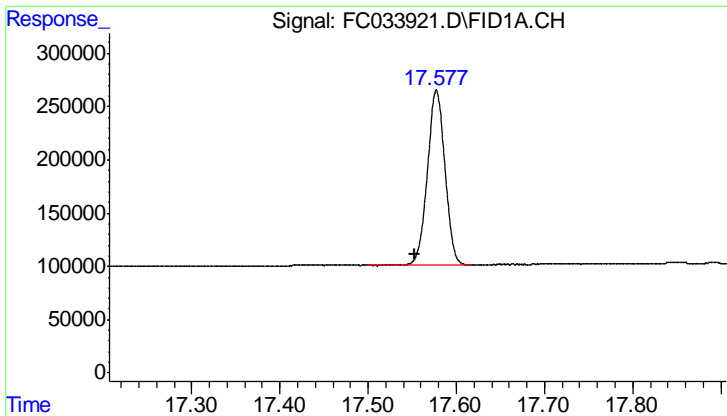
#15 n-Hexacosane (C26)

R.T.: 15.749 min
Delta R.T.: 0.023 min
Response: 2281230
Conc: 17.44 ug/ml



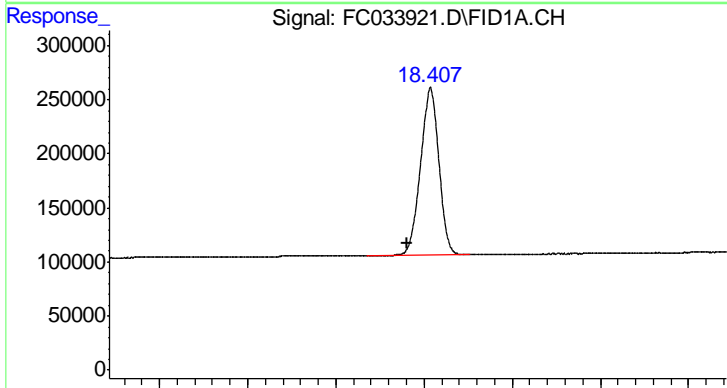
#16 n-Octacosane (C28)

R.T.: 16.694 min
Delta R.T.: 0.022 min
Response: 2307331
Conc: 18.07 ug/ml

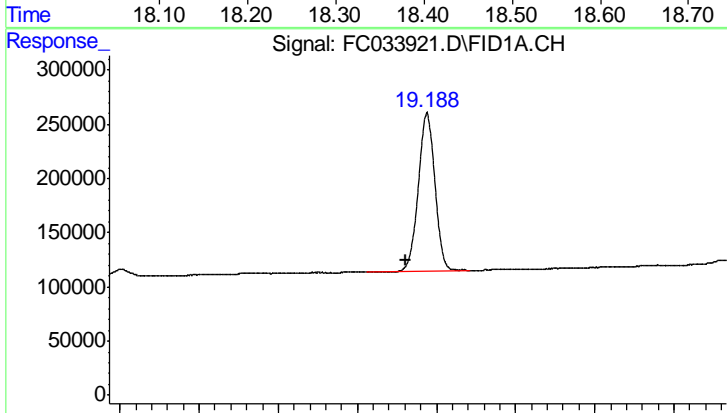


#17 n-Tricontane (C30)
 R.T.: 17.578 min
 Delta R.T.: 0.024 min
 Response: 2264334
 Conc: 18.79 ug/ml

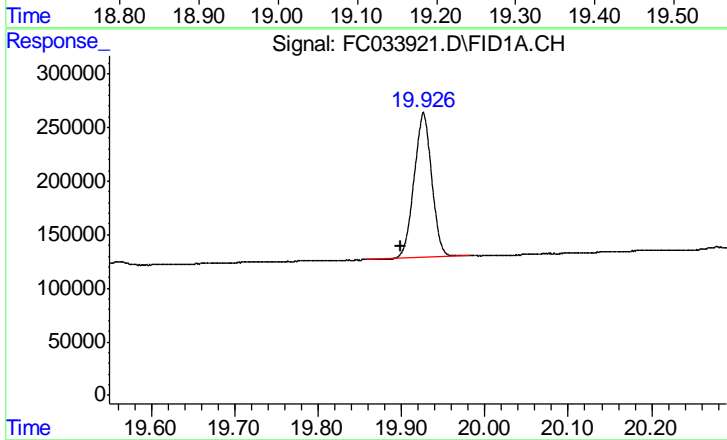
Instrument :
 FID_C
 ClientSampleId :



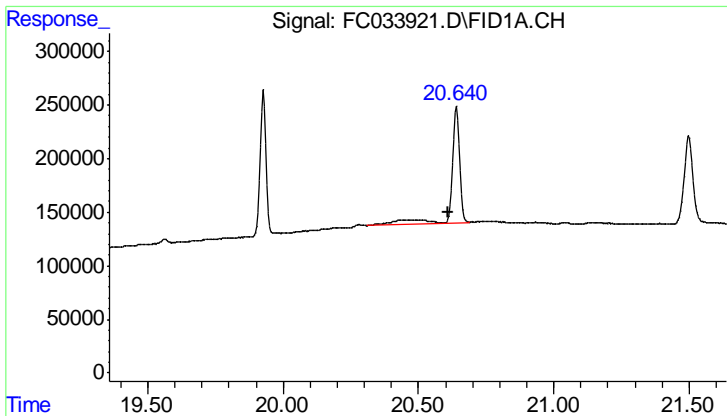
#18 n-Dotriacontane (C32)
 R.T.: 18.408 min
 Delta R.T.: 0.026 min
 Response: 2236732
 Conc: 19.22 ug/ml



#19 n-Tetratriacontane (C34)
 R.T.: 19.188 min
 Delta R.T.: 0.027 min
 Response: 2117392
 Conc: 19.59 ug/ml



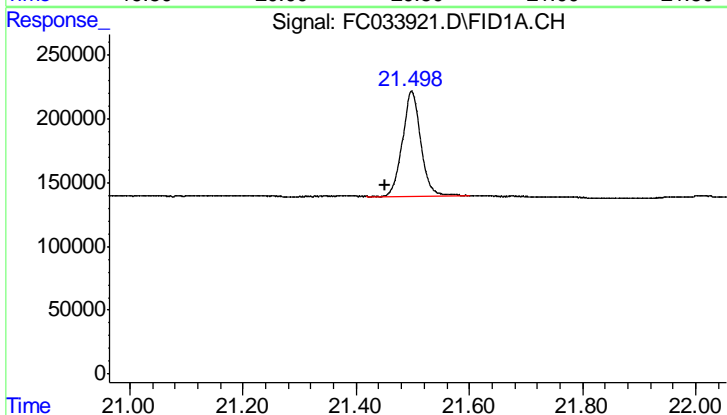
#20 n-Hexatriacontane (C36)
 R.T.: 19.927 min
 Delta R.T.: 0.028 min
 Response: 1983170
 Conc: 19.81 ug/ml



#21 n-Octatriacontane (C38)

R.T.: 20.640 min
Delta R.T.: 0.032 min
Response: 2269199
Conc: 23.71 ug/ml

Instrument :
FID_C
ClientSampleId :



#22 n-Tetracontane (C40)

R.T.: 21.498 min
Delta R.T.: 0.047 min
Response: 1827617
Conc: 20.36 ug/ml