

Data Path : P:\HPCHEM1\FID C\Data\FC051118AL\
 Data File : FC033926.D
 Signal(s) : FID1A.CH
 Acq On : 12 May 2018 3:08
 Operator : UA/AJ
 Sample : PB108964BL
 Misc :
 ALS Vial : 7 Sample Multiplier: 1

Instrument :
 FID_C
 ClientSampleId :

Integration File: autoint1.e
 Quant Time: May 12 04:09:03 2018
 Quant Method : P:\HPCHEM1\FID_C\Method\Alaphatic EPH 042418.M
 Quant Title : GC Extractables
 QLast Update : Tue Apr 24 20:41:39 2018
 Response via : Initial Calibration
 Integrator: ChemStation 6890 Scale Mode: Large solvent peaks clipped

Volume Inj. : 1 ul
 Signal Phase : Rxi-lms
 Signal Info : 20M x 0.18mm x 0.18um

Compound	R.T.	Response	Conc Units

System Monitoring Compounds			
9) S ortho-Terphenyl (SURR)	11.451	5548977	35.732 ug/ml
Spiked Amount	50.000	Recovery	= 71.46%
12) S 1-chlorooctadecane (S...	12.885	4710434	40.108 ug/ml
Spiked Amount	50.000	Recovery	= 80.22%

Target Compounds

(f)=RT Delta > 1/2 Window

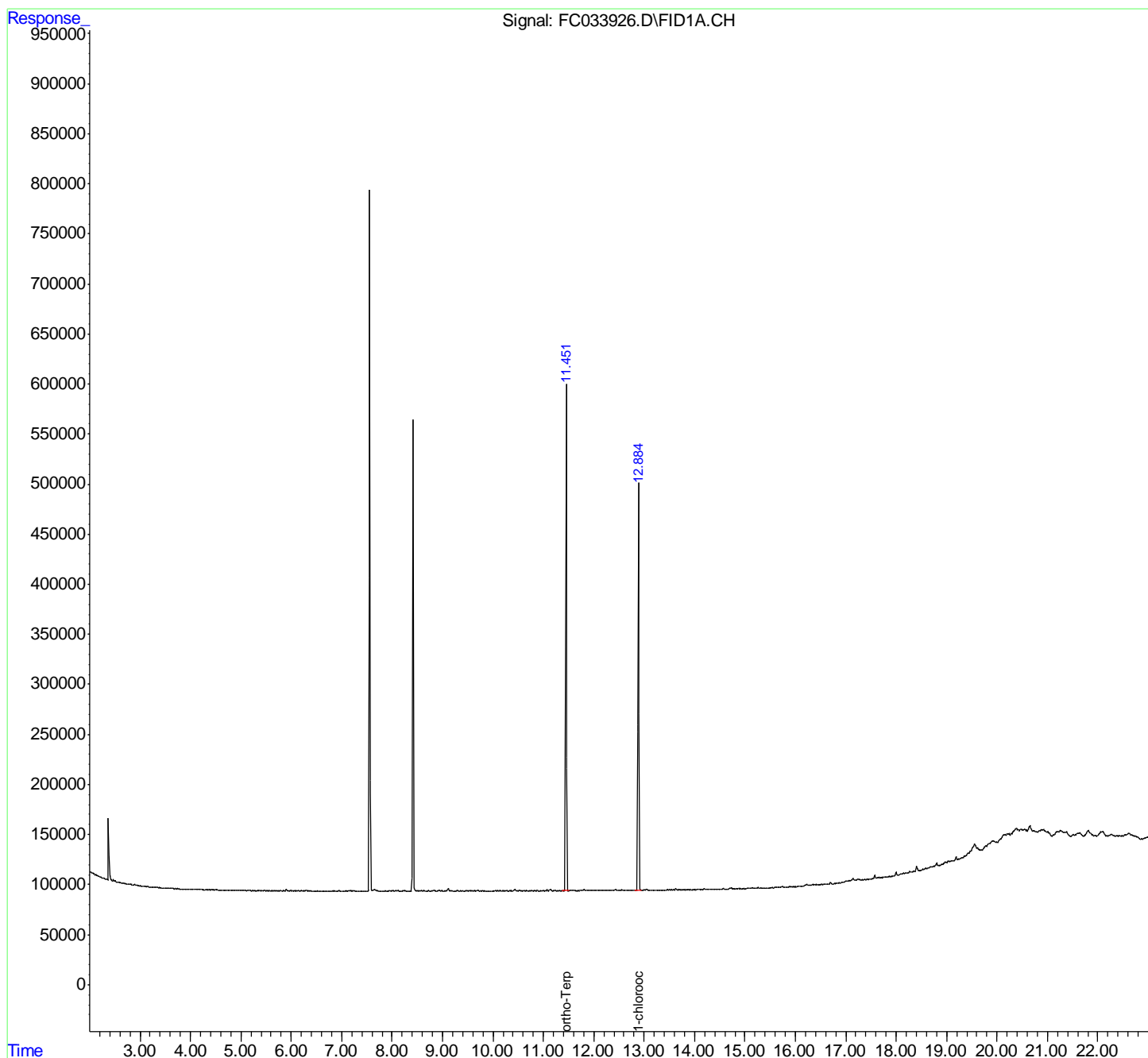
(m)=manual int.

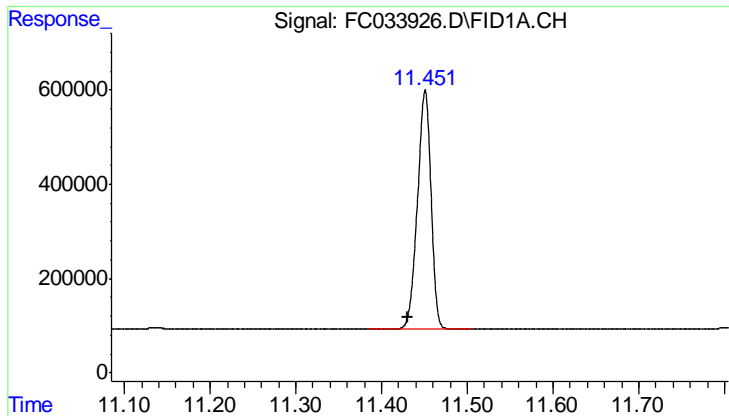
Data Path : P:\HPCHEM1\FID C\Data\FC051118AL\
 Data File : FC033926.D
 Signal(s) : FID1A.CH
 Acq On : 12 May 2018 3:08
 Operator : UA/AJ
 Sample : PB108964BL
 Misc :
 ALS Vial : 7 Sample Multiplier: 1

Instrument :
 FID_C
 ClientSampleId :

Integration File: autoint1.e
 Quant Time: May 12 04:09:03 2018
 Quant Method : P:\HPCHEM1\FID_C\Method\Aliphatic EPH 042418.M
 Quant Title : GC Extractables
 QLast Update : Tue Apr 24 20:41:39 2018
 Response via : Initial Calibration
 Integrator: ChemStation 6890 Scale Mode: Large solvent peaks clipped

Volume Inj. : 1 ul
 Signal Phase : Rxi-lms
 Signal Info : 20M x 0.18mm x 0.18um

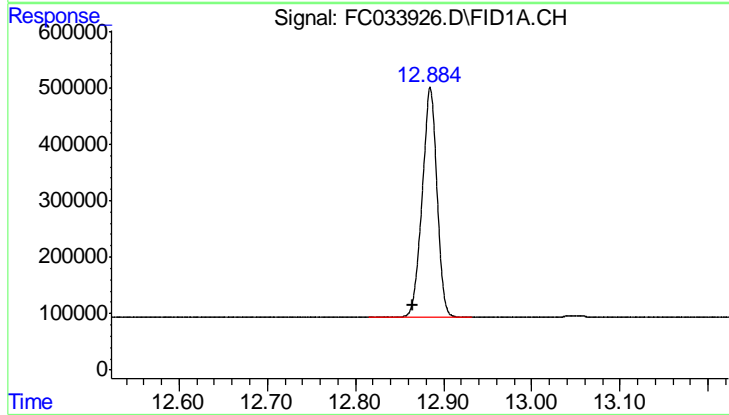




#9 ortho-Terphenyl (SURR)

R.T.: 11.451 min
Delta R.T.: 0.020 min
Response: 5548977
Conc: 35.73 ug/ml

Instrument :
FID_C
ClientSampleId :



#12 1-chlorooctadecane (SURR)

R.T.: 12.885 min
Delta R.T.: 0.020 min
Response: 4710434
Conc: 40.11 ug/ml