

Data Path : P:\HPCHEM1\FID C\Data\FC051218AL\
 Data File : FC033963.D
 Signal(s) : FID1A.CH
 Acq On : 13 May 2018 3:32
 Operator : UA/AJ
 Sample : J2873-01MS
 Misc :
 ALS Vial : 17 Sample Multiplier: 1

Instrument :
 FID_C
 Client Sampled :
 RVTP-01MS

Manual Integrations
 APPROVED

ugo
 5/14/2018 3:31:54 PM

Integration File: autoint1.e
 Quant Time: May 14 03:58:14 2018
 Quant Method : P:\HPCHEM1\FID_C\Method\Alaphatic EPH 042418.M
 Quant Title : GC Extractables
 QLast Update : Tue Apr 24 20:41:39 2018
 Response via : Initial Calibration
 Integrator: ChemStation 6890 Scale Mode: Large solvent peaks clipped

Volume Inj. : 1 ul
 Signal Phase : Rxi-lms
 Signal Info : 20M x 0.18mm x 0.18um

Compound	R.T.	Response	Conc Units
System Monitoring Compounds			
9) S ortho-Terphenyl (SURR)	11.450	6262542	40.327 ug/ml
Spiked Amount	50.000	Recovery =	80.65%
12) S 1-chlorooctadecane (S...	12.884	4681562	39.863 ug/ml
Spiked Amount	50.000	Recovery =	79.73%
Target Compounds			
1) T n-Nonane (C9)	3.259	3858440	28.265 ug/ml
2) T n-Decane (C10)	4.325	4862643	34.995 ug/ml
3) T A-Naphthalene (C11.7)	5.896	5955303	38.383 ug/ml
4) T n-Dodecane (C12)	6.333	5412038	37.674 ug/ml
5) T A-2-methylnaphthalene...	6.946	6217883	39.665 ug/ml
6) T n-Tetradecane (C14)	8.118	5769537	38.584 ug/ml
7) T n-Hexadecane (C16)	9.708	6014540	39.908 ug/ml
8) T n-Octadecane (C18)	11.142	6141181	41.555 ug/ml
10) T n-Eicosane (C20)	12.444	6095907	41.493 ug/ml
11) T n-Heneicosane (C21)	13.053	6122088	42.460 ug/ml
13) T n-Docosane (C22)	13.636	5975487	41.924 ug/ml
14) T n-Tetracosane (C24)	14.702	5711144	41.619 ug/mlm
15) T n-Hexacosane (C26)	15.751	5872324	44.899 ug/ml
16) T n-Octacosane (C28)	16.694	5843971	45.777 ug/ml
17) T n-Tricontane (C30)	17.579	5971047	49.559 ug/mlm
18) T n-Dotriacontane (C32)	18.407	5979149	51.367 ug/ml
19) T n-Tetratriacontane (C34)	19.187	5742514	53.135 ug/ml
20) T n-Hexatriacontane (C36)	19.925	5720924	57.148 ug/ml
21) T n-Octatriacontane (C38)	20.637	5401200	56.424 ug/ml
22) T n-Tetracontane (C40)	21.496	5271063	58.732 ug/ml

(f)=RT Delta > 1/2 Window

(m)=manual int.

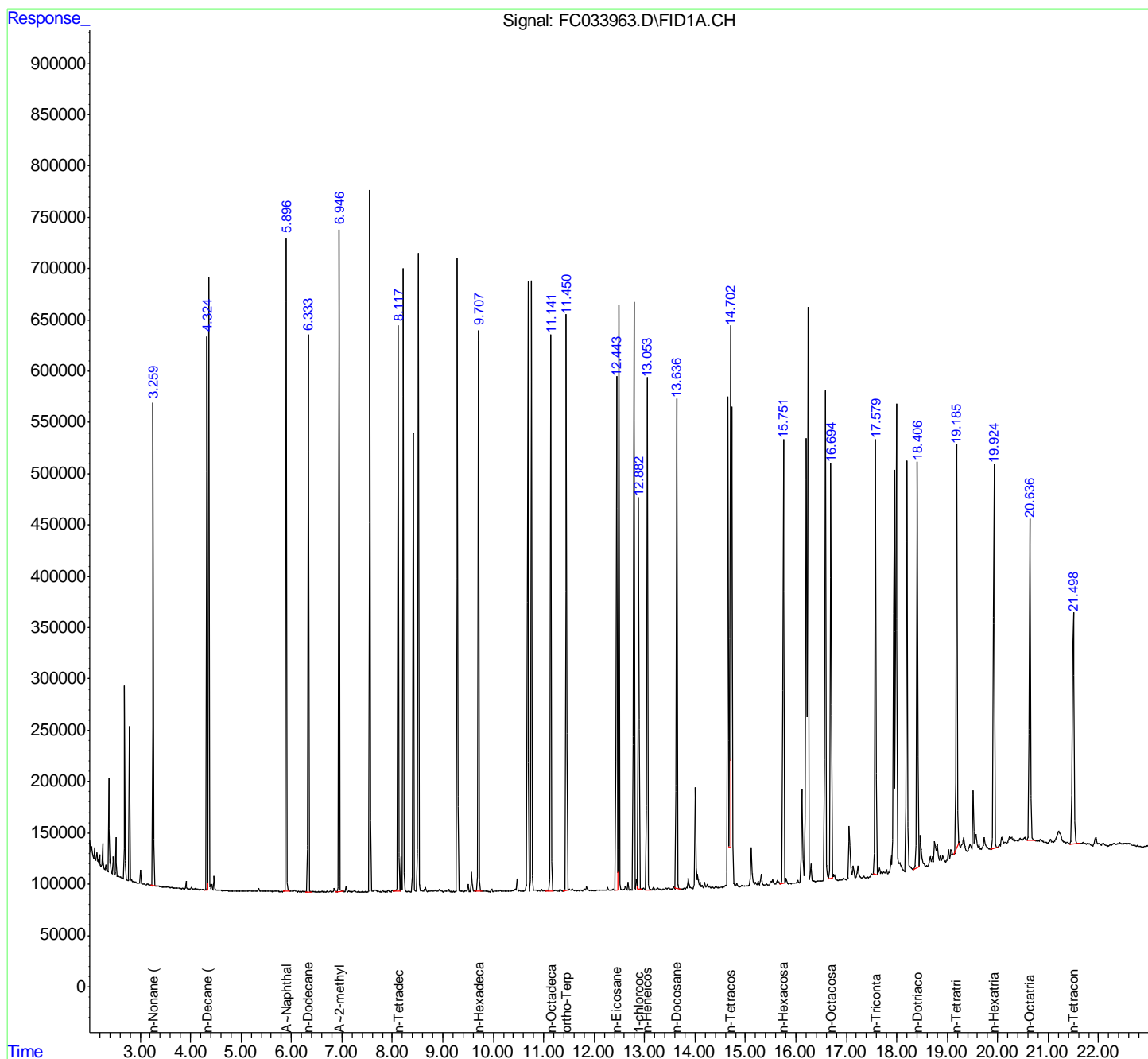
Data Path : P:\HPCHEM1\FID C\Data\FC051218AL\
 Data File : FC033963.D
 Signal(s) : FID1A.CH
 Acq On : 13 May 2018 3:32
 Operator : UA/AJ
 Sample : J2873-01MS
 Misc :
 ALS Vial : 17 Sample Multiplier: 1

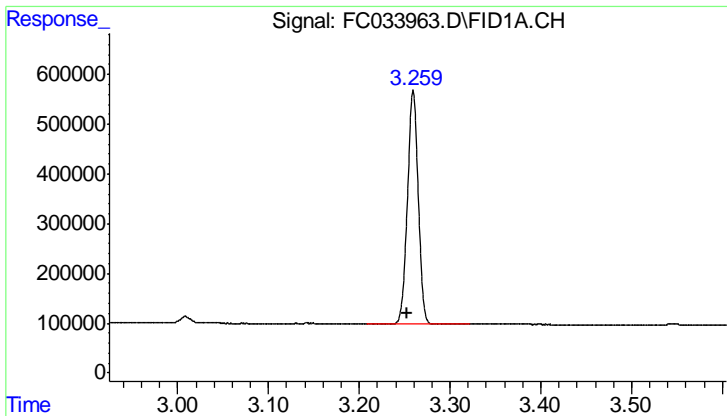
Instrument :
 FID_C
 Client Sampled :
 RVTP-01MS

Manual Integrations
 APPROVED
 ugo
 5/14/2018 3:31:54 PM

Integration File: autoint1.e
 Quant Time: May 14 03:58:14 2018
 Quant Method : P:\HPCHEM1\FID_C\Method\Aliphatic EPH 042418.M
 Quant Title : GC Extractables
 QLast Update : Tue Apr 24 20:41:39 2018
 Response via : Initial Calibration
 Integrator: ChemStation 6890 Scale Mode: Large solvent peaks clipped

Volume Inj. : 1 ul
 Signal Phase : Rxi-lms
 Signal Info : 20M x 0.18mm x 0.18um





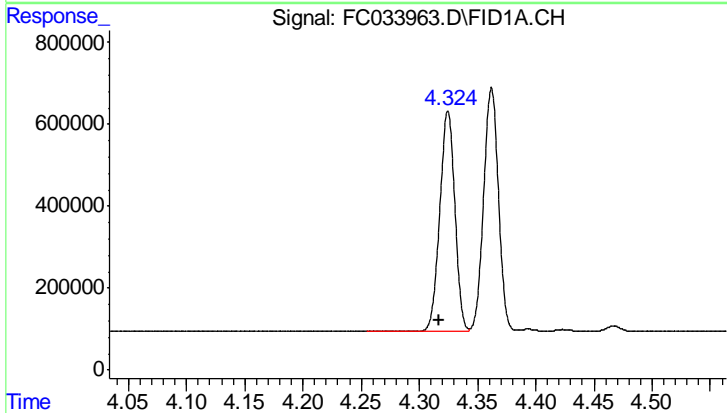
#1 n-Nonane (C9)

R.T.: 3.259 min
 Delta R.T.: 0.006 min
 Response: 3858440
 Conc: 28.26 ug/ml

Instrument :
 FID_C
 ClientSampleId :
 RVTP-01MS

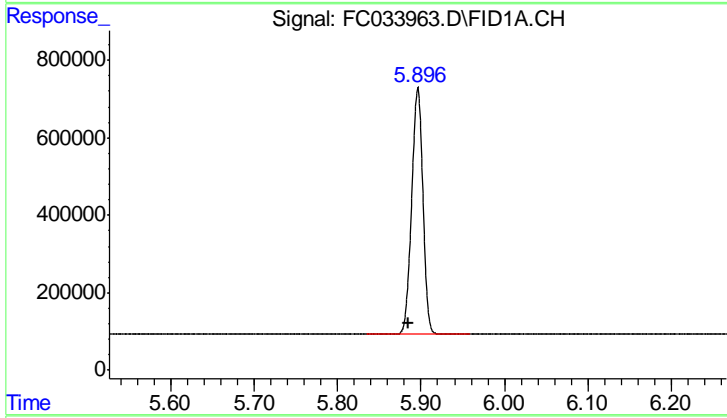
Manual Integrations
 APPROVED

ugo
 5/14/2018 3:31:54 PM



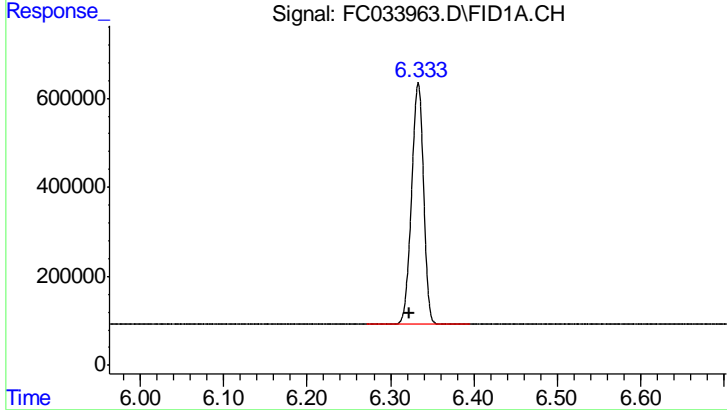
#2 n-Decane (C10)

R.T.: 4.325 min
 Delta R.T.: 0.008 min
 Response: 4862643
 Conc: 34.99 ug/ml



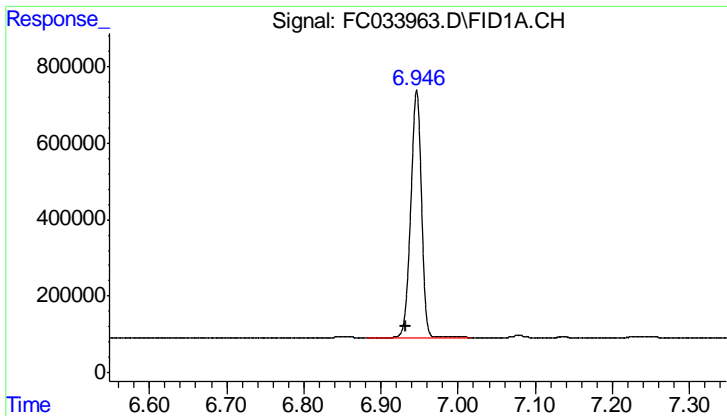
#3 A~Naphthalene (C11.7)

R.T.: 5.896 min
 Delta R.T.: 0.012 min
 Response: 5955303
 Conc: 38.38 ug/ml



#4 n-Dodecane (C12)

R.T.: 6.333 min
 Delta R.T.: 0.011 min
 Response: 5412038
 Conc: 37.67 ug/ml



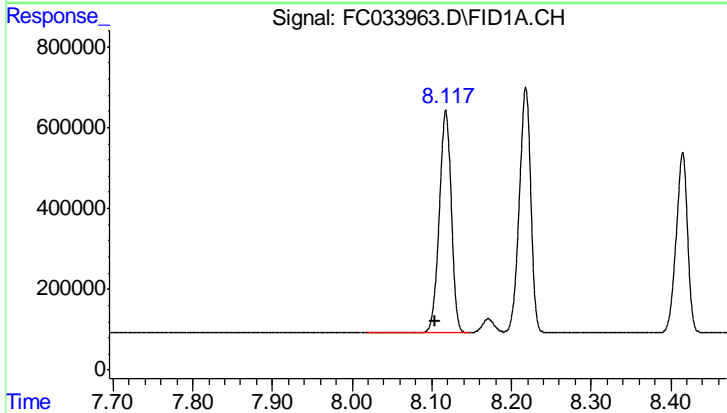
#5 A~2-methylnaphthalene (C12.89)

R.T.: 6.946 min
 Delta R.T.: 0.014 min
 Response: 6217883
 Conc: 39.67 ug/ml

Instrument :
 FID_C
 ClientSampleId :
 RVTP-01MS

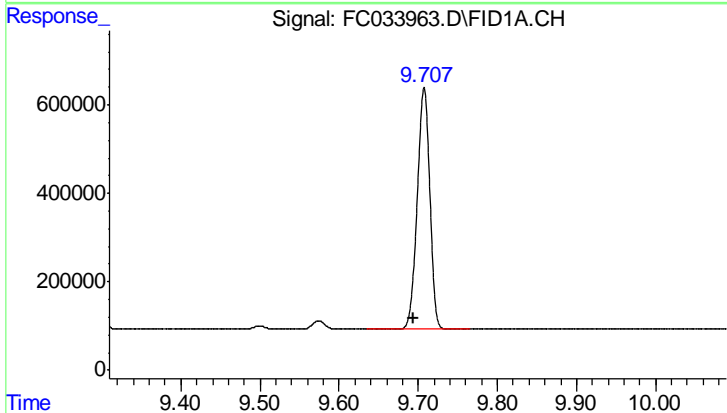
Manual Integrations
 APPROVED

ugo
 5/14/2018 3:31:54 PM



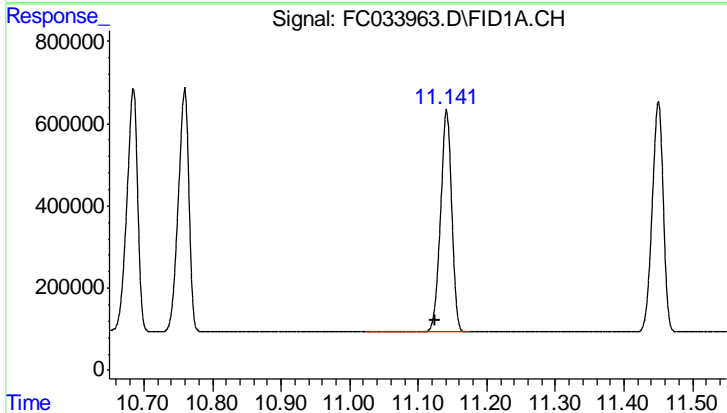
#6 n-Tetradecane (C14)

R.T.: 8.118 min
 Delta R.T.: 0.013 min
 Response: 5769537
 Conc: 38.58 ug/ml



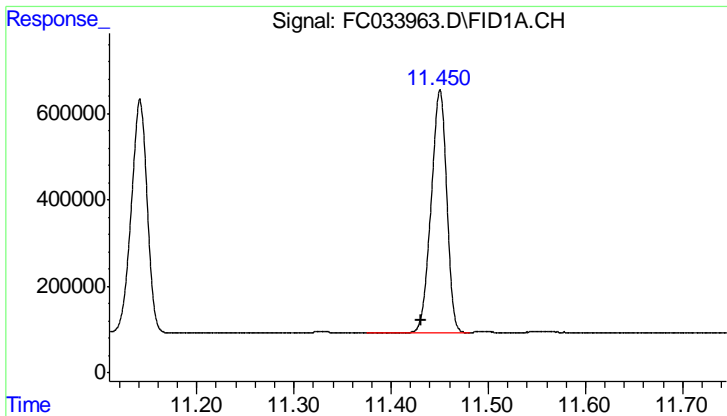
#7 n-Hexadecane (C16)

R.T.: 9.708 min
 Delta R.T.: 0.013 min
 Response: 6014540
 Conc: 39.91 ug/ml



#8 n-Octadecane (C18)

R.T.: 11.142 min
 Delta R.T.: 0.016 min
 Response: 6141181
 Conc: 41.55 ug/ml



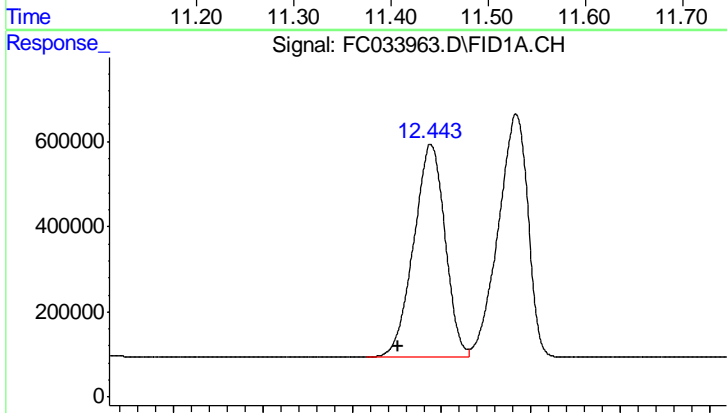
#9 ortho-Terphenyl (SURR)

R.T.: 11.450 min
 Delta R.T.: 0.019 min
 Response: 6262542
 Conc: 40.33 ug/ml

Instrument :
 FID_C
 ClientSampled :
 RVTP-01MS

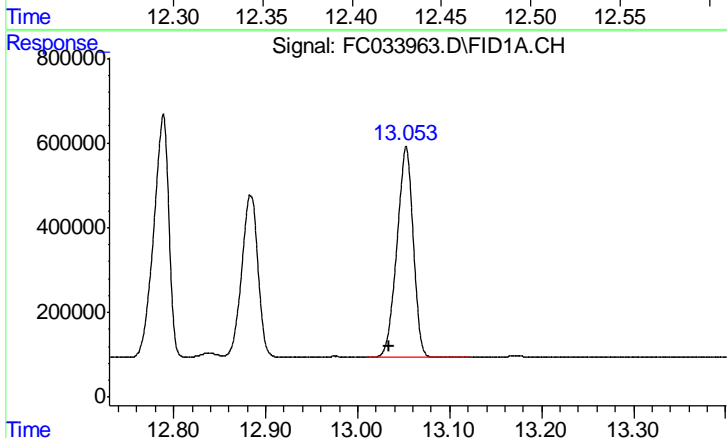
Manual Integrations
 APPROVED

ugo
 5/14/2018 3:31:54 PM



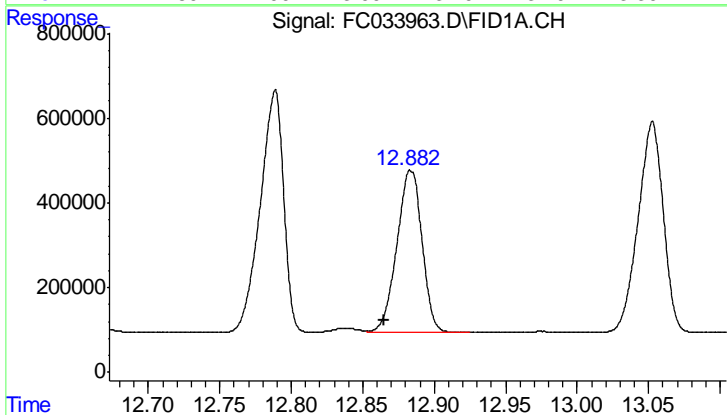
#10 n-Eicosane (C20)

R.T.: 12.444 min
 Delta R.T.: 0.018 min
 Response: 6095907
 Conc: 41.49 ug/ml



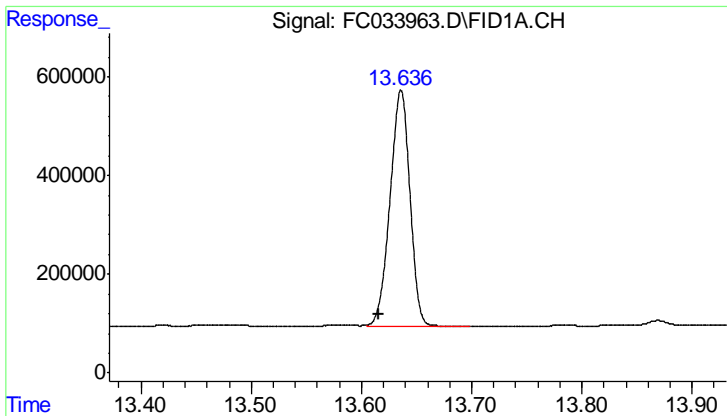
#11 n-Heneicosane (C21)

R.T.: 13.053 min
 Delta R.T.: 0.019 min
 Response: 6122088
 Conc: 42.46 ug/ml



#12 1-chlorooctadecane (SURR)

R.T.: 12.884 min
 Delta R.T.: 0.018 min
 Response: 4681562
 Conc: 39.86 ug/ml



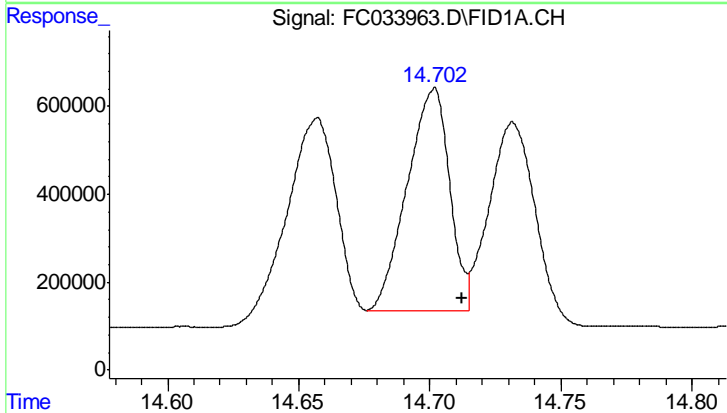
#13 n-Docosane (C22)

R.T.: 13.636 min
 Delta R.T.: 0.020 min
 Response: 5975487
 Conc: 41.92 ug/ml

Instrument :
 FID_C
 ClientSampled :
 RVTP-01MS

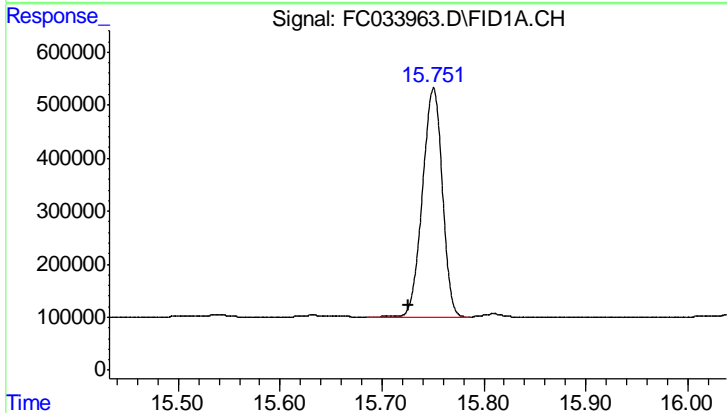
Manual Integrations
 APPROVED

ugo
 5/14/2018 3:31:54 PM



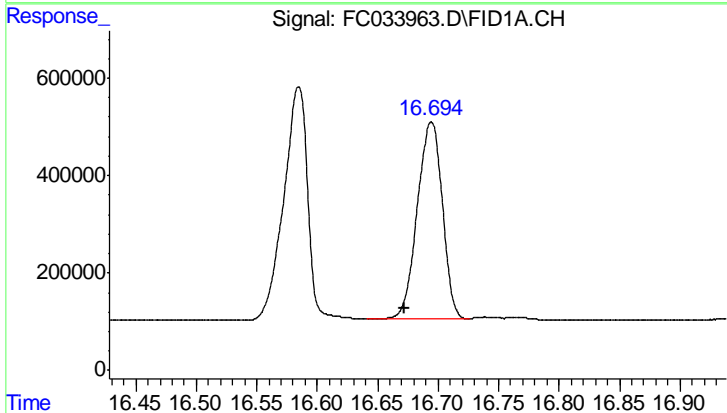
#14 n-Tetracosane (C24)

R.T.: 14.702 min
 Delta R.T.: -0.010 min
 Response: 5711144
 Conc: 41.62 ug/ml m



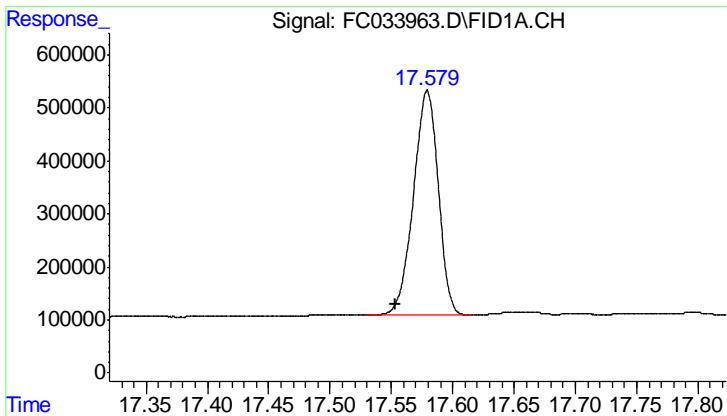
#15 n-Hexacosane (C26)

R.T.: 15.751 min
 Delta R.T.: 0.025 min
 Response: 5872324
 Conc: 44.90 ug/ml



#16 n-Octacosane (C28)

R.T.: 16.694 min
 Delta R.T.: 0.022 min
 Response: 5843971
 Conc: 45.78 ug/ml

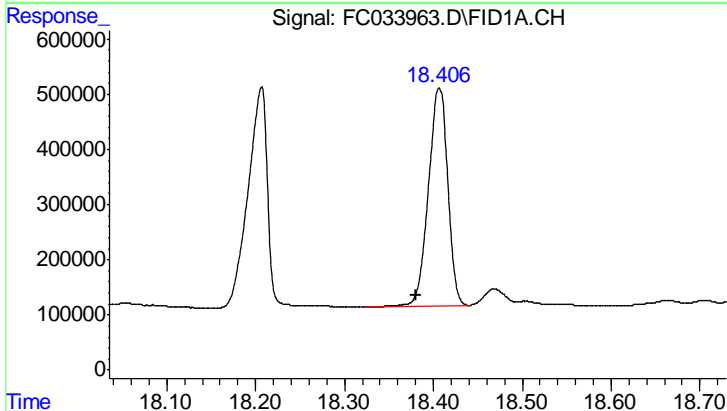


#17 n-Tricontane (C30)
 R.T.: 17.579 min
 Delta R.T.: 0.026 min
 Response: 5971047
 Conc: 49.56 ug/ml

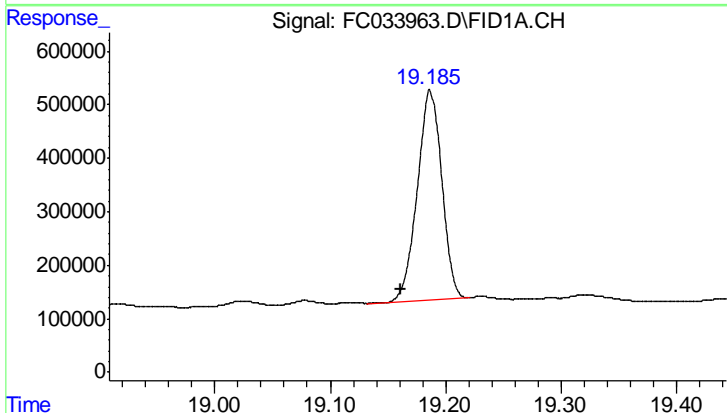
Instrument :
 FID_C
 ClientSampled :
 RVTP-01MS

Manual Integrations
 APPROVED

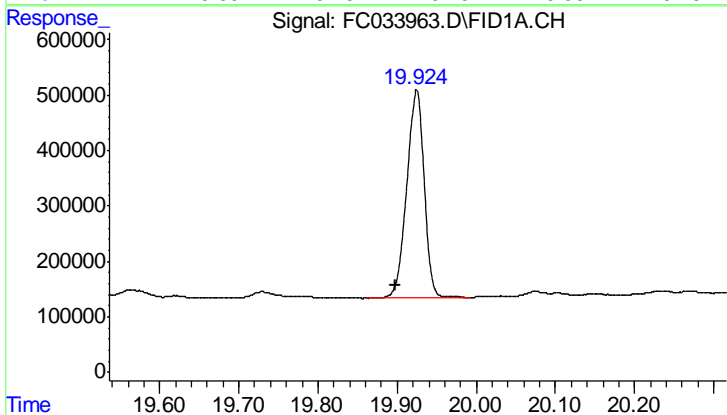
ugo
 5/14/2018 3:31:54 PM



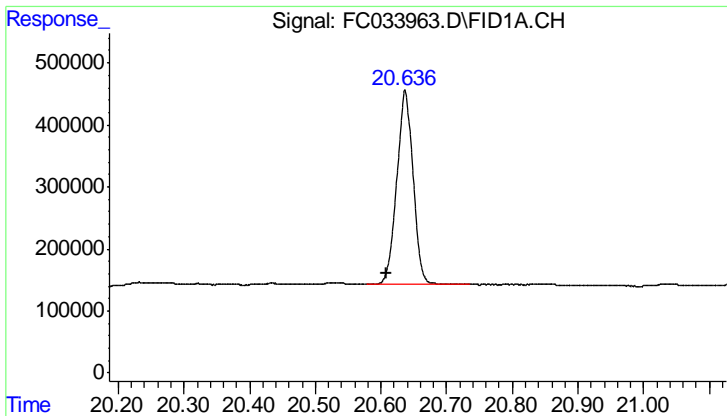
#18 n-Dotriacontane (C32)
 R.T.: 18.407 min
 Delta R.T.: 0.026 min
 Response: 5979149
 Conc: 51.37 ug/ml



#19 n-Tetratriacontane (C34)
 R.T.: 19.187 min
 Delta R.T.: 0.026 min
 Response: 5742514
 Conc: 53.14 ug/ml



#20 n-Hexatriacontane (C36)
 R.T.: 19.925 min
 Delta R.T.: 0.026 min
 Response: 5720924
 Conc: 57.15 ug/ml



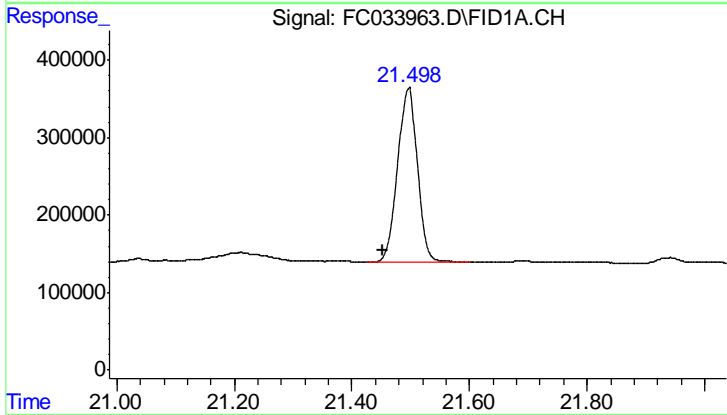
#21 n-Octatriacontane (C38)

R.T.: 20.637 min
Delta R.T.: 0.029 min
Response: 5401200
Conc: 56.42 ug/ml

Instrument :
FID_C
ClientSampled :
RVTP-01MS

Manual Integrations
APPROVED

ugo
5/14/2018 3:31:54 PM



#22 n-Tetracontane (C40)

R.T.: 21.496 min
Delta R.T.: 0.045 min
Response: 5271063
Conc: 58.73 ug/ml